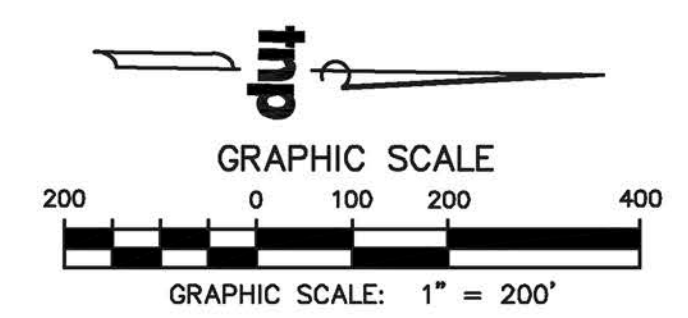


**UTILITY NOTE**

THE UTILITIES SHOWN ON THE PLANS WERE COMPILED FROM VARIOUS SOURCES AND ARE INTENDED TO SHOW THE GENERAL EXISTENCE AND LOCATION OF UTILITIES IN THE AREA OF CONSTRUCTION. THE ENGINEER ASSUMES NO RESPONSIBILITY FOR THE ACCURACY OF THE UTILITY INFORMATION SHOWN ON THE PLANS. THE CONTRACTOR SHALL VERIFY THE EXACT LOCATION OF ALL UTILITIES PRIOR TO CONSTRUCTION. THE CONTRACTOR SHALL CONTACT UTILITY COMPANIES 48 HOURS IN ADVANCE OF ANY CONSTRUCTION ACTIVITIES IN ORDER TO DETERMINE IF THERE IS ANY CONFLICT WITH THE PROPOSED FACILITIES. THE CONTRACTOR SHALL NOTIFY THE ENGINEER IMMEDIATELY WHEN CONFLICTS WITH EXISTING UTILITIES ARE DISCOVERED.

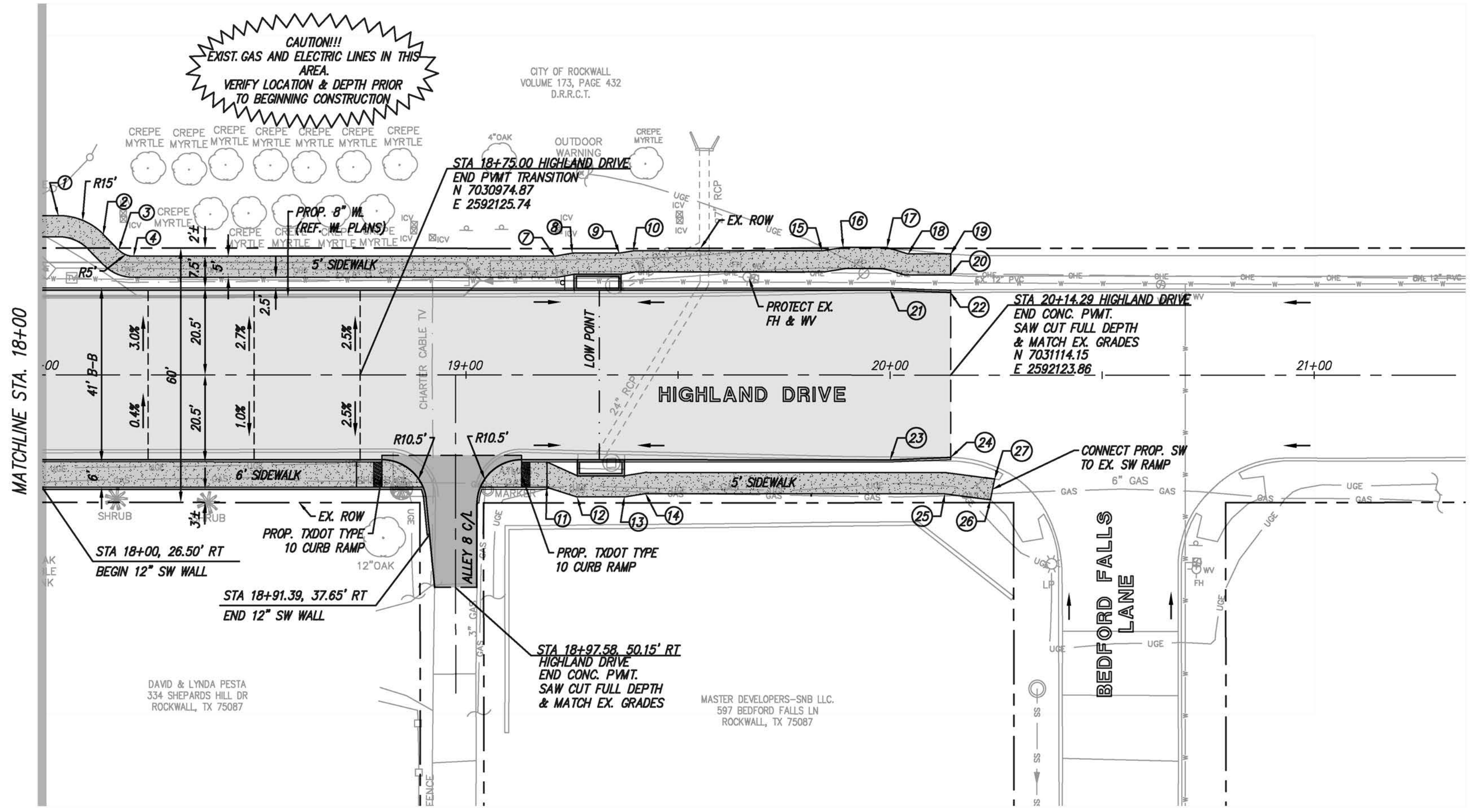
#	STA	OFFSET	DESC	T/P
1	18+03.85	37.50 LT	PC	551.87
2	18+14.45	33.11 LT	PT	551.98
3	18+18.09	29.46 LT	PC	552.03
4	18+21.63	28.00 LT	PT	552.07
7	19+20.89	28.00 LT	PI	551.13
8	19+25.04	28.76 LT	PI	551.14
9	19+36.16	28.74 LT	PI	551.23
10	19+39.40	29.26 LT	PI	551.27
11	19+19.06	26.50 RT	PI	551.11
12	19+26.25	28.75 RT	PI	551.32
13	19+37.33	28.76 RT	PI	551.53
14	19+42.34	28.00 RT	PI	551.50
15	19+83.93	29.26 LT	PI	551.68
16	19+88.93	30.06 LT	PI	551.64
17	19+99.25	30.06 LT	PI	551.78
18	20+04.25	28.56 LT	PI	552.06
19	20+14.28	28.52 LT	PI	552.27
20	20+14.28	23.56 LT	PI	552.17
21	20+00	20.00 LT	PI	551.34
22	20+14.29	19.47 LT	PI	551.74
23	20+00	20.00 RT	PI	551.34
24	20+14.29	19.43 RT	PI	551.74
25	20+12.96	28.00 RT	PI	552.40
26	20+23.70	29.39 RT	PI	552.84
27	20+24.65	24.48 RT	PI	552.58



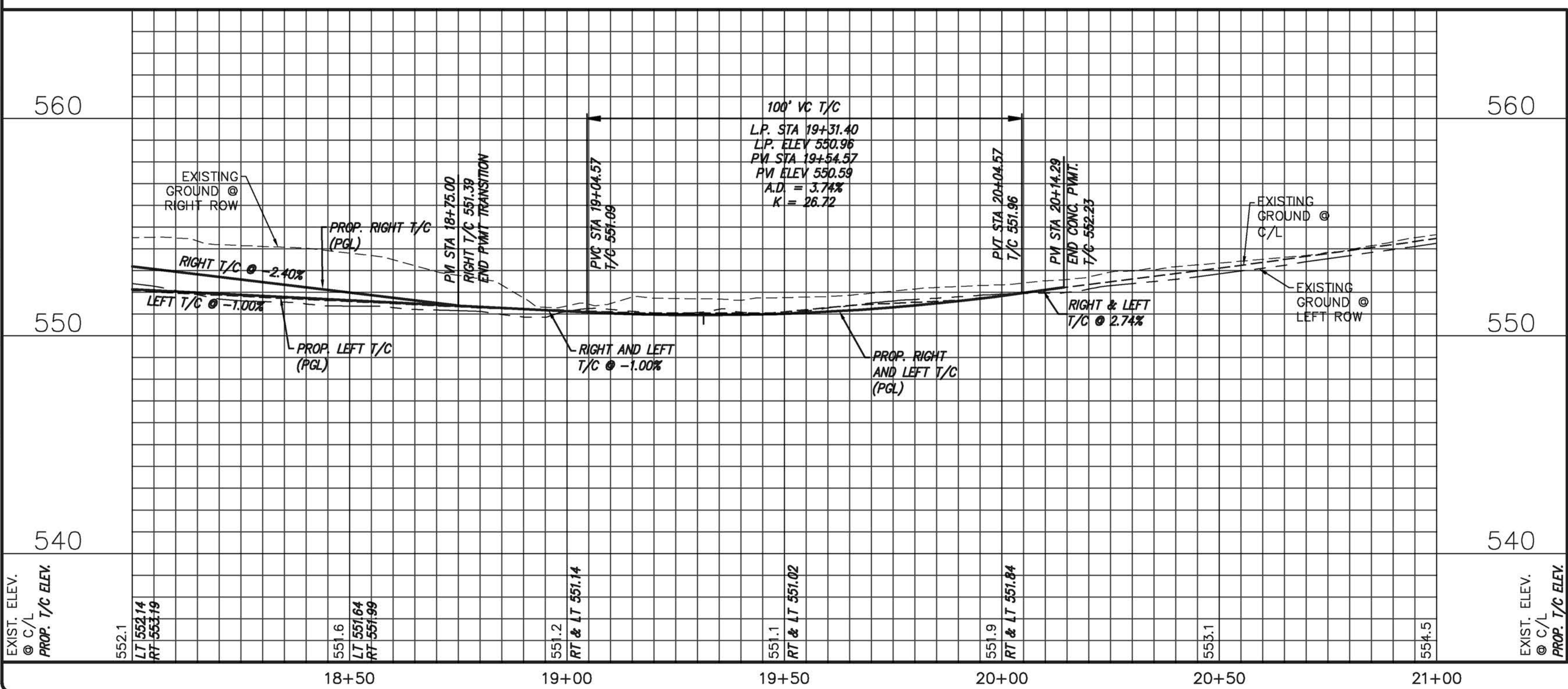
**LEGEND**

- PROP. CONCRETE DRIVEWAY/ALLEY (6" DRIVEWAY, 7"-5"-7" ALLEY)
- PROP. 8" CONCRETE PAVEMENT
- PROP. 4" CONCRETE SIDEWALK
- TREE TO BE REMOVED
- TREE TO REMAIN

- NOTES:**
- ALL CURB RADII ARE SHOWN TO FACE OF CURB.
  - ALL EXISTING ROADWAY SIGNS SHALL BE REMOVED AND RETURNED TO THE CITY. REFERENCE PAVEMENT SIGNAGE & STRIPING PLANS.
  - CONTRACTOR SHALL PROVIDE TEMPORARY MAIL SERVICE FACILITIES FOR ALL HOMES WHERE REGULAR MAIL SERVICE IS DISRUPTED BY THE CONTRACTOR AS SUBSIDIARY TO THE CONTRACT. CONTRACTOR SHALL REINSTALL ALL MAIL BOXES DISTURBED BY CONSTRUCTION AND REPLACE THOSE MAIL BOXES DAMAGED DURING CONSTRUCTION TO A CONDITION BETTER OR EQUAL TO THAT OF THE ORIGINAL MAIL BOX AS SUBSIDIARY TO THE CONTRACT.
  - ALL SIDEWALK LOCATED AGAINST BACK OF CURB TO BE LUGGED. REFERENCE JOINT LUG DETAIL ON CITY STANDARD DETAIL R-2170.
  - ALL CONCRETE STEPS SHOULD HAVE A MAXIMUM RISE OF 6 INCHES AND A MINIMUM RUN OF 11 INCHES.

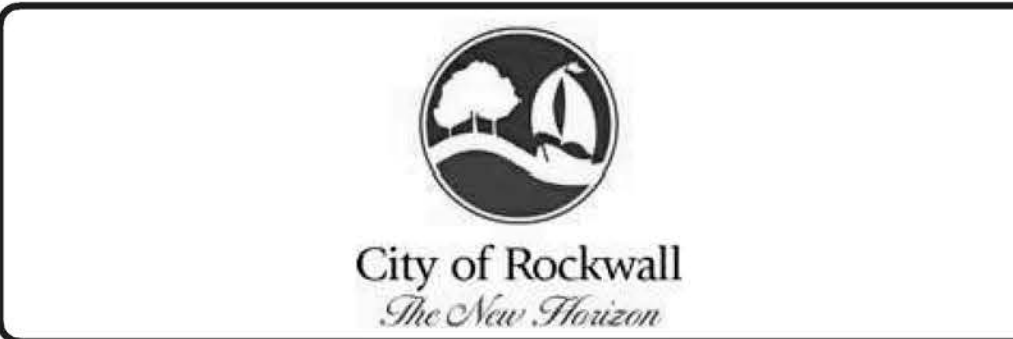


Drawing: P:\PROJECTS\RWL18219\CAD\Sheet\PHASE 1 - NORTH\37 PAVING PLAN & PROFILE - STA 18+00 TO END.dwg at Sep 27, 2019, 10:40am by fskelle  
 Layout: 37 PAVING PLAN & PROFILE - STA 18+00 TO END.dwg at Sep 27, 2019, 10:40am by fskelle  
 Drawing: P:\PROJECTS\RWL18219\CAD\Sheet\PHASE 1 - NORTH\37 PAVING PLAN & PROFILE - STA 18+00 TO END.dwg at Sep 27, 2019, 10:40am by fskelle  
 Layout: 37 PAVING PLAN & PROFILE - STA 18+00 TO END.dwg at Sep 27, 2019, 10:40am by fskelle



no.	revision	by	date

**teague nall and perkins, inc**  
 825 Watters Creek Blvd., Suite M300  
 Allen, Texas 75013  
 214.461.9867 ph 214.461.9864 fx  
 www.tnppinc.com  
 TBPE: F-230; TBPLS: 10011600, 10011601, 10194381



scale when bar is 1 inch long  
 horiz 1" = 20'  
 vert 1" = 4'  
 SEP 2019



**RECORD DOCUMENTS**

THESE PLANS ARE FOR THE OWNER'S USE AS RECORD SET OF THE CONSTRUCTED PROJECT, AND REFLECT REVISIONS AND CONSTRUCTION RELATED CHANGES AS RECORDED BY THE CONTRACTOR. CHANGES MADE FROM THE ORIGINAL CONSTRUCTION DOCUMENTS DO NOT DEPICT ENGINEERING AND ARE NOT THE RESPONSIBILITY OF TEAGUE NALL & PERKINS, INC. OR THE ENGINEER OF RECORD ON THE ORIGINAL DOCUMENTS. ORIGINAL PLANS RELEASED FOR CONSTRUCTION WERE SEALED BY GYANENDRA POKHREL, P.E. NO. 118159 ON 09/28/2018.

**CITY OF ROCKWALL, TEXAS**  
**HIGHLAND DRIVE RECONSTRUCTION, PHASE I**  
 (DRIFTWOOD STREET TO BEDFORD FALLS LANE)  
**PAVING PLAN & PROFILE**  
**STA 18+00 TO END**

tnp project  
 RWL18219  
 sheet  
**35**