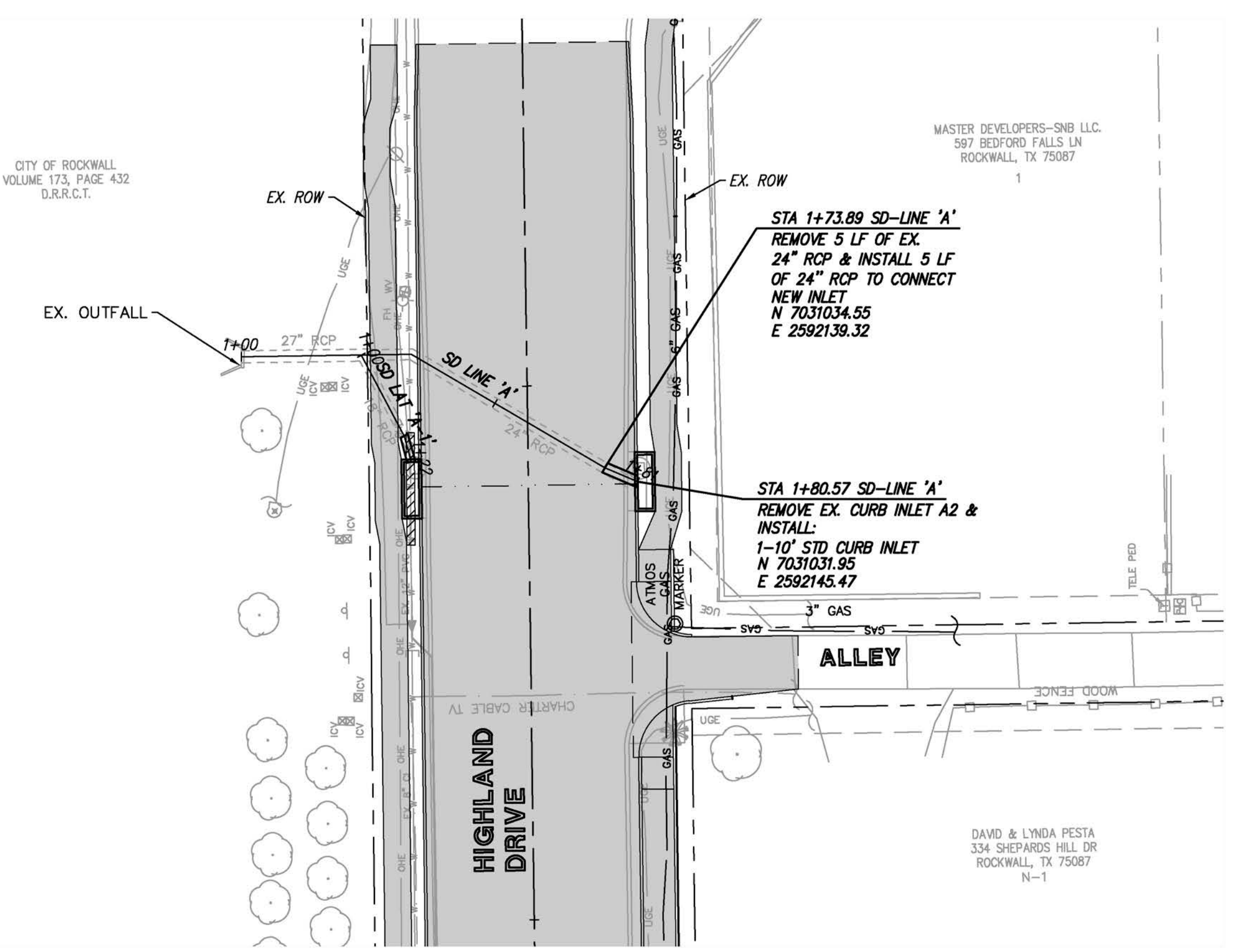


UTILITY NOTE

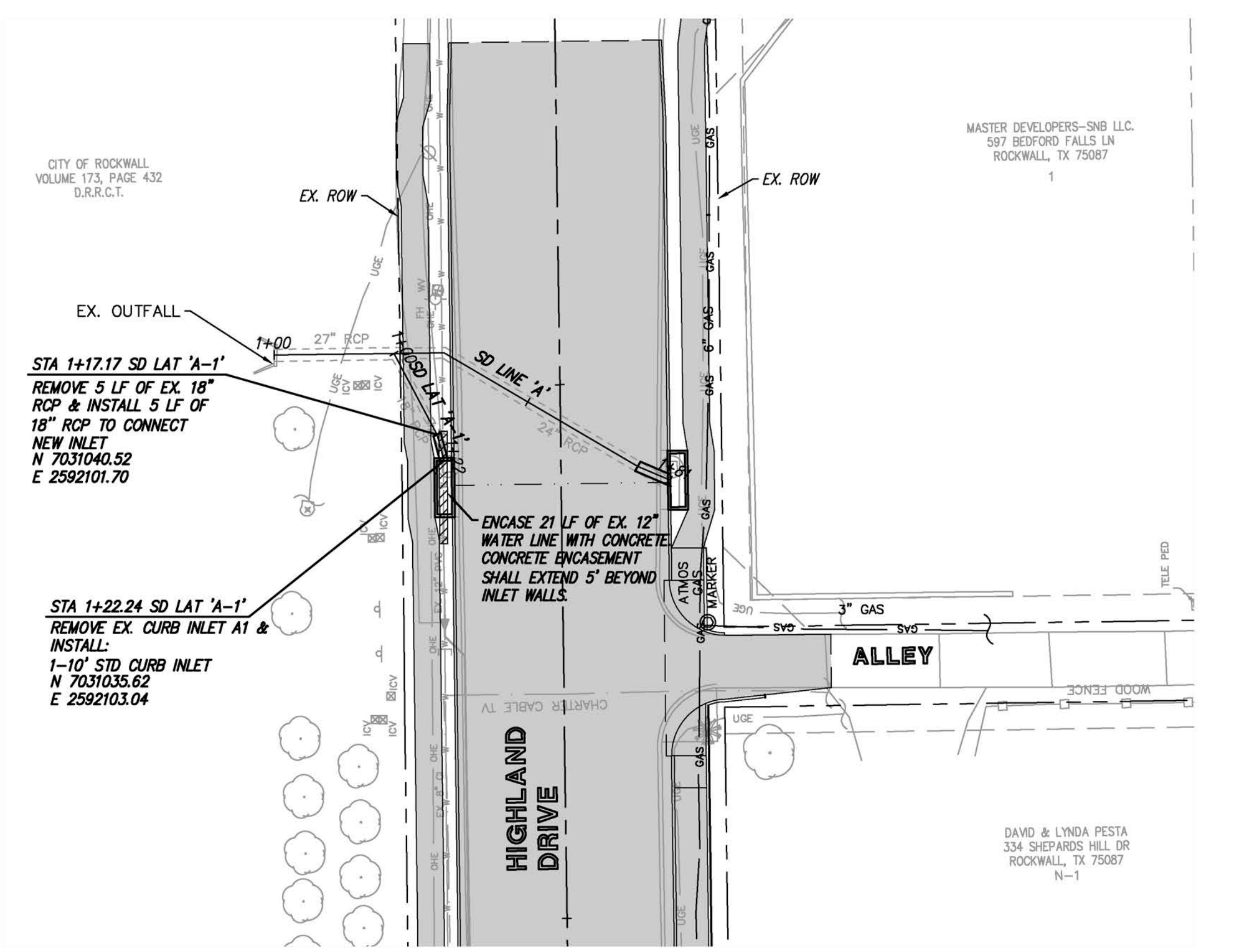
THE UTILITIES SHOWN ON THE PLANS WERE COMPILED FROM VARIOUS SOURCES AND ARE INTENDED TO SHOW THE GENERAL EXISTENCE AND LOCATION OF UTILITIES IN THE AREA OF CONSTRUCTION. THE ENGINEER ASSUMES NO RESPONSIBILITY FOR THE ACCURACY OF THE UTILITY INFORMATION SHOWN ON THE PLANS. THE CONTRACTOR SHALL VERIFY THE EXACT LOCATION OF ALL UTILITIES PRIOR TO CONSTRUCTION. THE CONTRACTOR SHALL CONTACT UTILITY COMPANIES 48 HOURS IN ADVANCE OF ANY CONSTRUCTION ACTIVITIES IN ORDER TO DETERMINE IF THERE IS ANY CONFLICT WITH THE PROPOSED FACILITIES. THE CONTRACTOR SHALL NOTIFY THE ENGINEER IMMEDIATELY WHEN CONFLICTS WITH EXISTING UTILITIES ARE DISCOVERED.

LEGEND

	PROPOSED STORM DRAIN PIPE
	PROPOSED STORM INLET
	EX FIRE HYDRANT
	EX WATER LINE
	EX WASTEWATER LINE
	EX OVERHEAD ELECTRIC
	EX POWER POLE
	EX GAS LINE

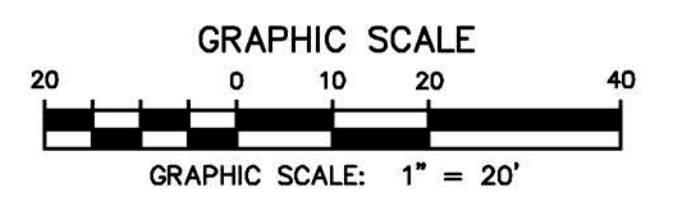
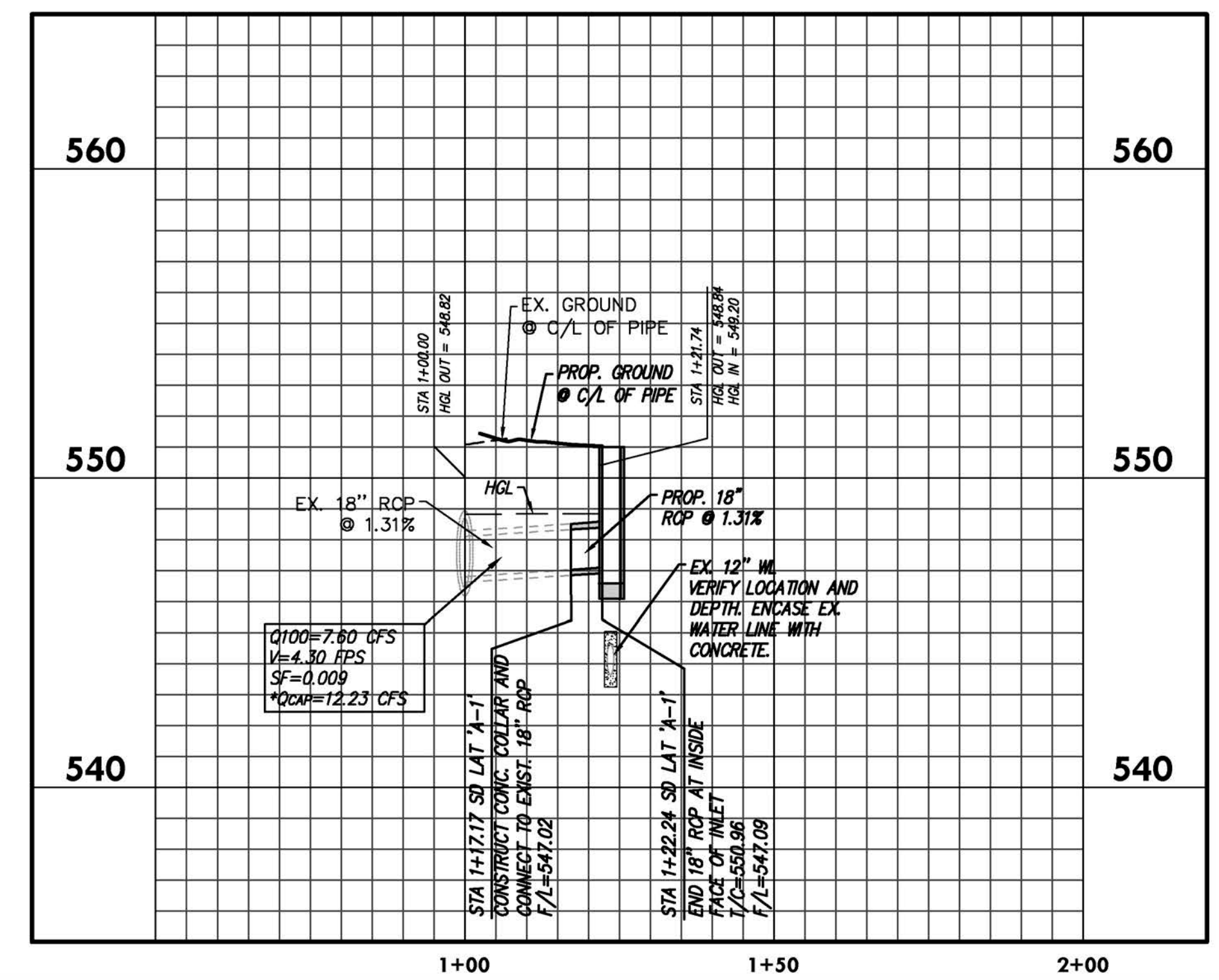
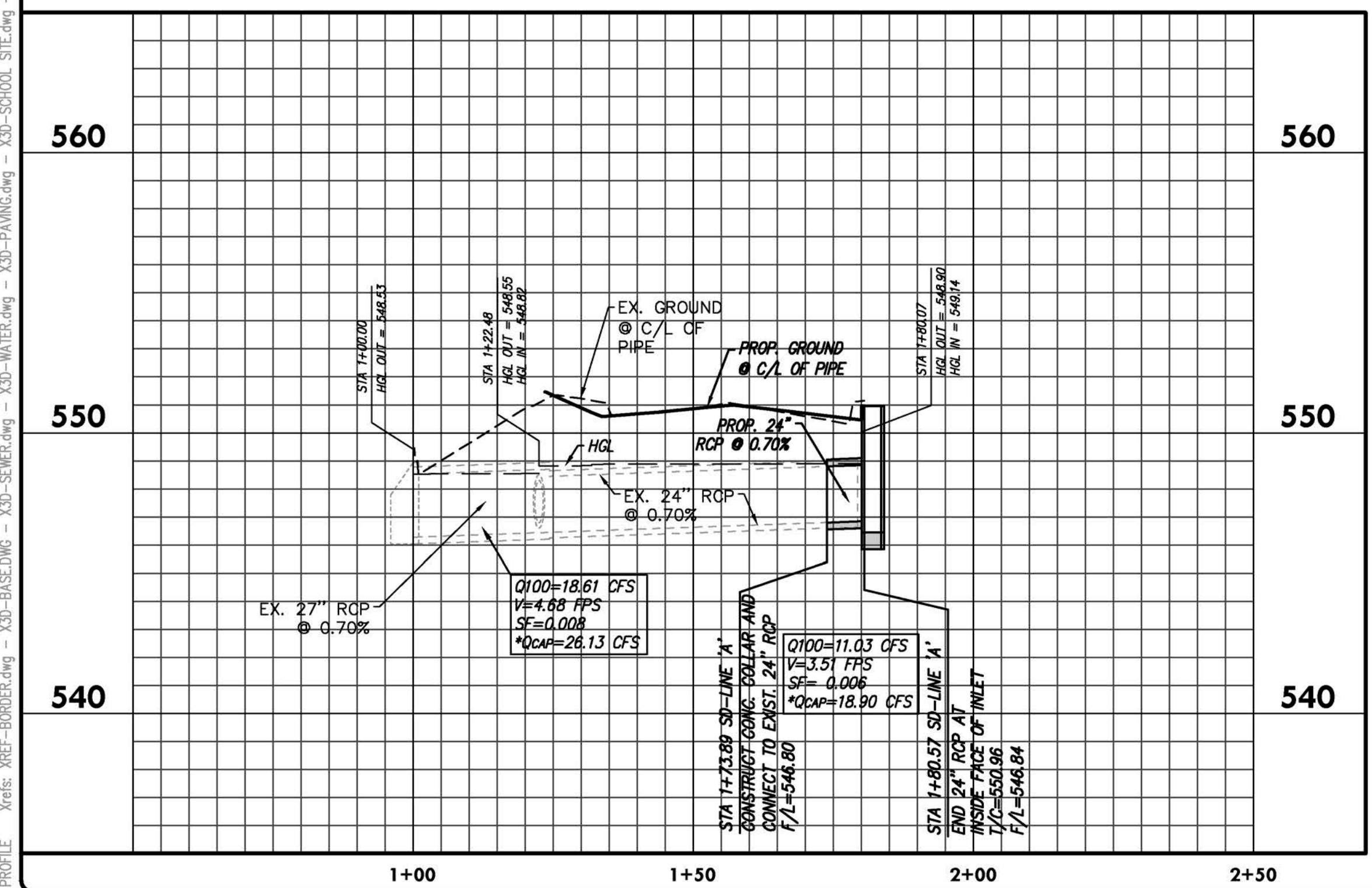


STORM DRAIN LINE 'A'



STORM DRAIN LAT 'A-1'

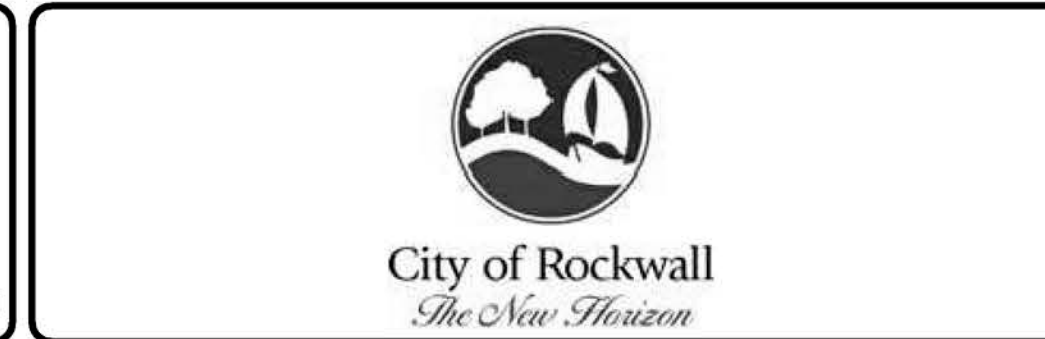
NOTE: * PIPE CAPACITIES (QCAP) ARE CALCULATED BASED ON FREE FLOW CONDITION WITH HYDRAULIC GRADIENT SAME AS SLOPE OF PIPE.



Drawing: PA PROJECTS (RML/BJR/CAD) SHEETS PHASE 1 - NORTH 230 SD LATERAL PLAN & PROFILE, Aug 27, 2018, 2:36pm by: hsk@tdi.com
 Copy: 23 SD LATERAL PLAN & PROFILE - REVISIONS: XSD-BASELINE, XSD-SEWER, XSD-WATER, XSD-PAVING, XSD-SCHOOL SITE, XSD-SD, XSD-UTILITY NOTE

no.	revision	by	date

teague nall and perkins, inc
 825 Watters Creek Blvd., Suite M300
 Allen, Texas 75013
 214.461.9867 ph 214.461.9864 fx
 www.tnppinc.com
 TBPE: F-230; TBPLS: 10011600, 10011601, 10194381



scale
when bar is 1 inch long
horiz 1" = 20'
vert 1" = 4'
SEP 2019



RECORD DOCUMENTS

THESE PLANS ARE FOR THE OWNER'S USE AS RECORD SET OF THE CONSTRUCTED PROJECT, AND REFLECT REVISIONS AND CONSTRUCTION RELATED CHANGES AS RECORDED BY THE CONTRACTOR. CHANGES MADE FROM THE ORIGINAL CONSTRUCTION DOCUMENTS DO NOT DEPICT ENGINEERING AND ARE NOT THE RESPONSIBILITY OF TEAGUE NALL & PERKINS, INC. OR THE ENGINEER OF RECORD ON THE ORIGINAL DOCUMENTS. ORIGINAL PLANS RELEASED FOR CONSTRUCTION WERE SEALED BY GYANENDRA POKHREL, P.E. NO. 118159 ON 09/28/2018.

CITY OF ROCKWALL, TEXAS
HIGHLAND DRIVE RECONSTRUCTION, PHASE I
 (DRIFTWOOD STREET TO BEDFORD FALLS LANE)
SD LATERAL PLAN & PROFILE

tnp project
RWL18219
 sheet
30