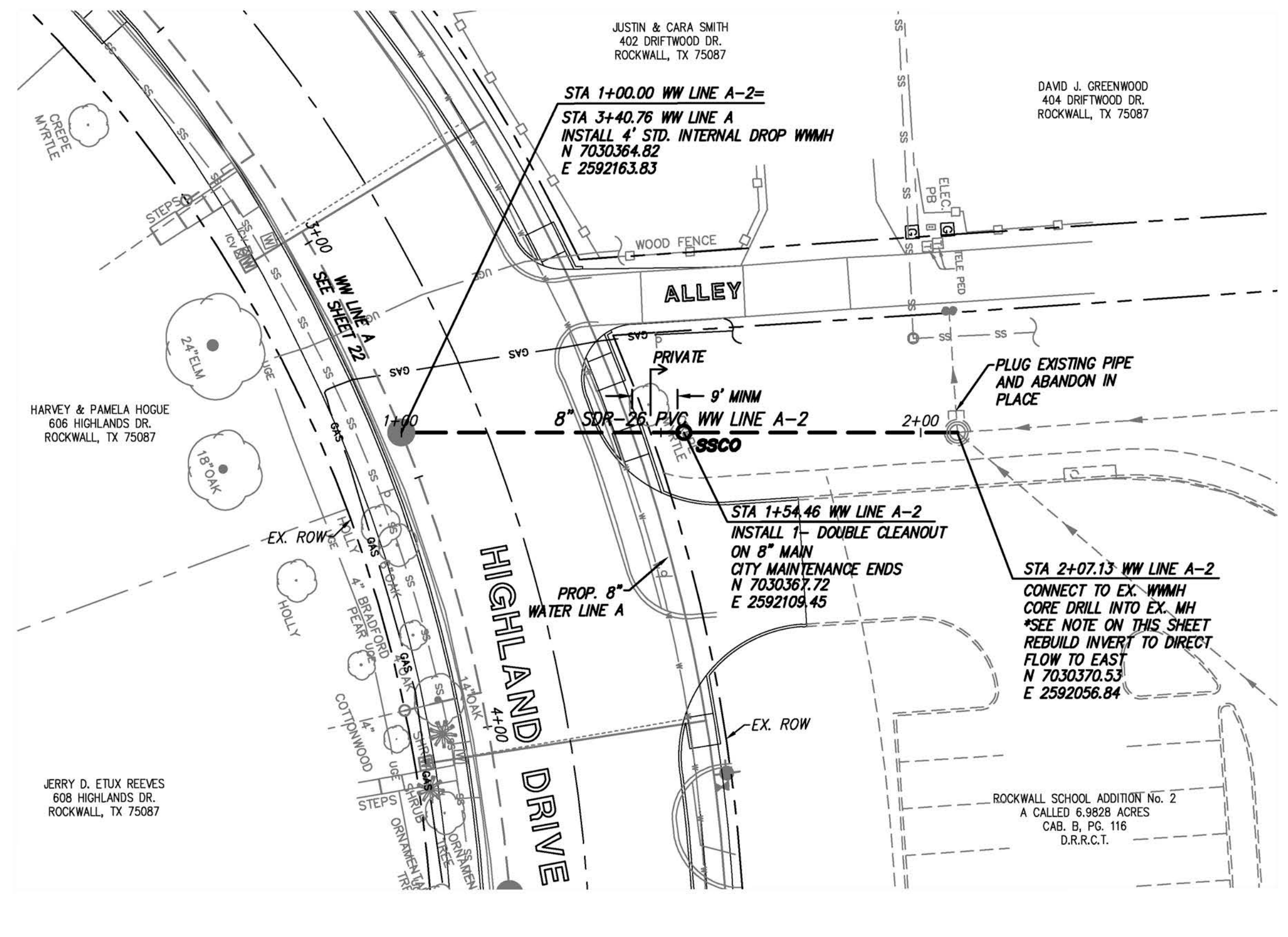
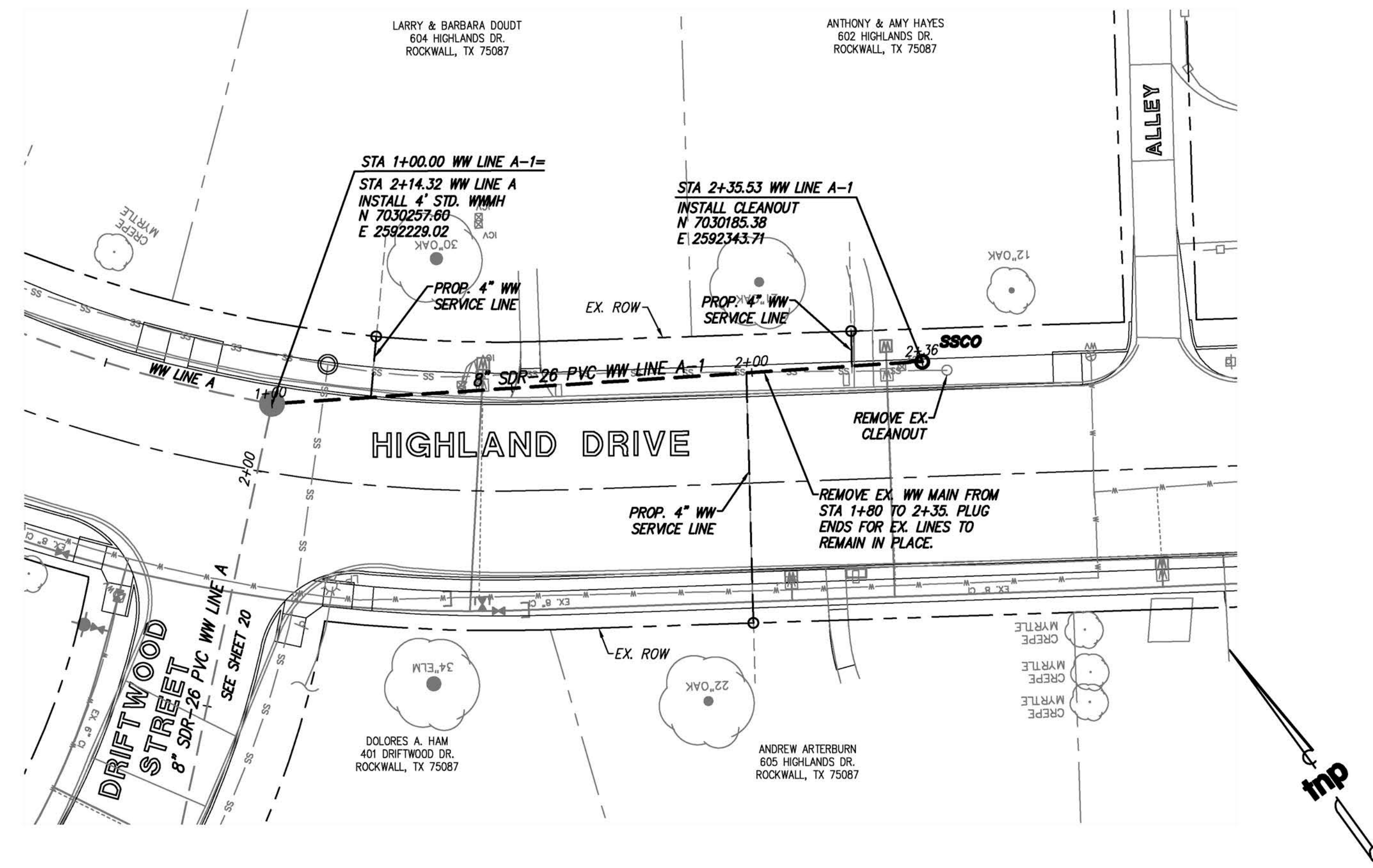


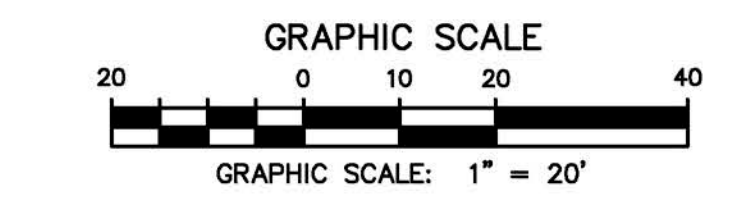
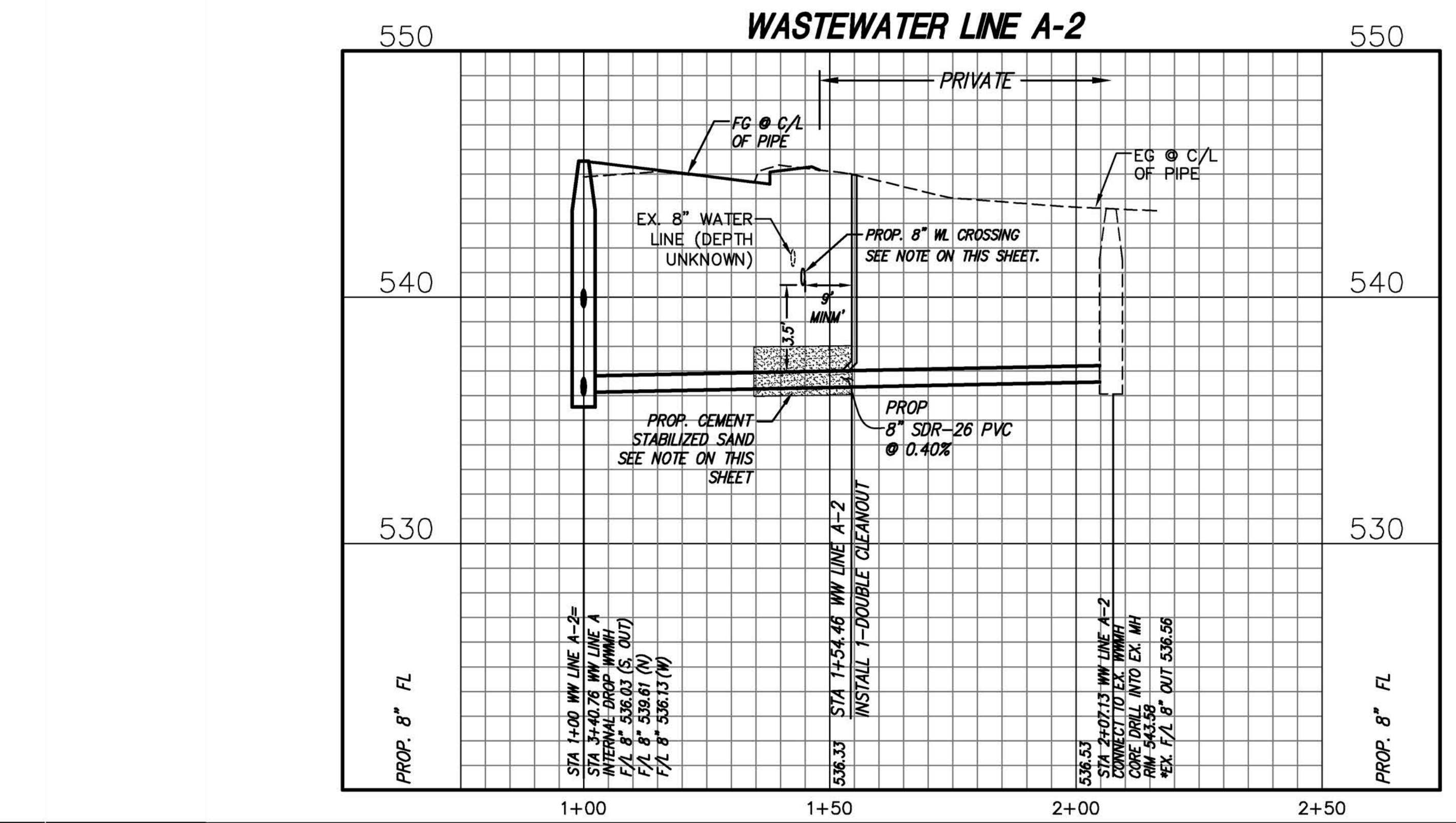
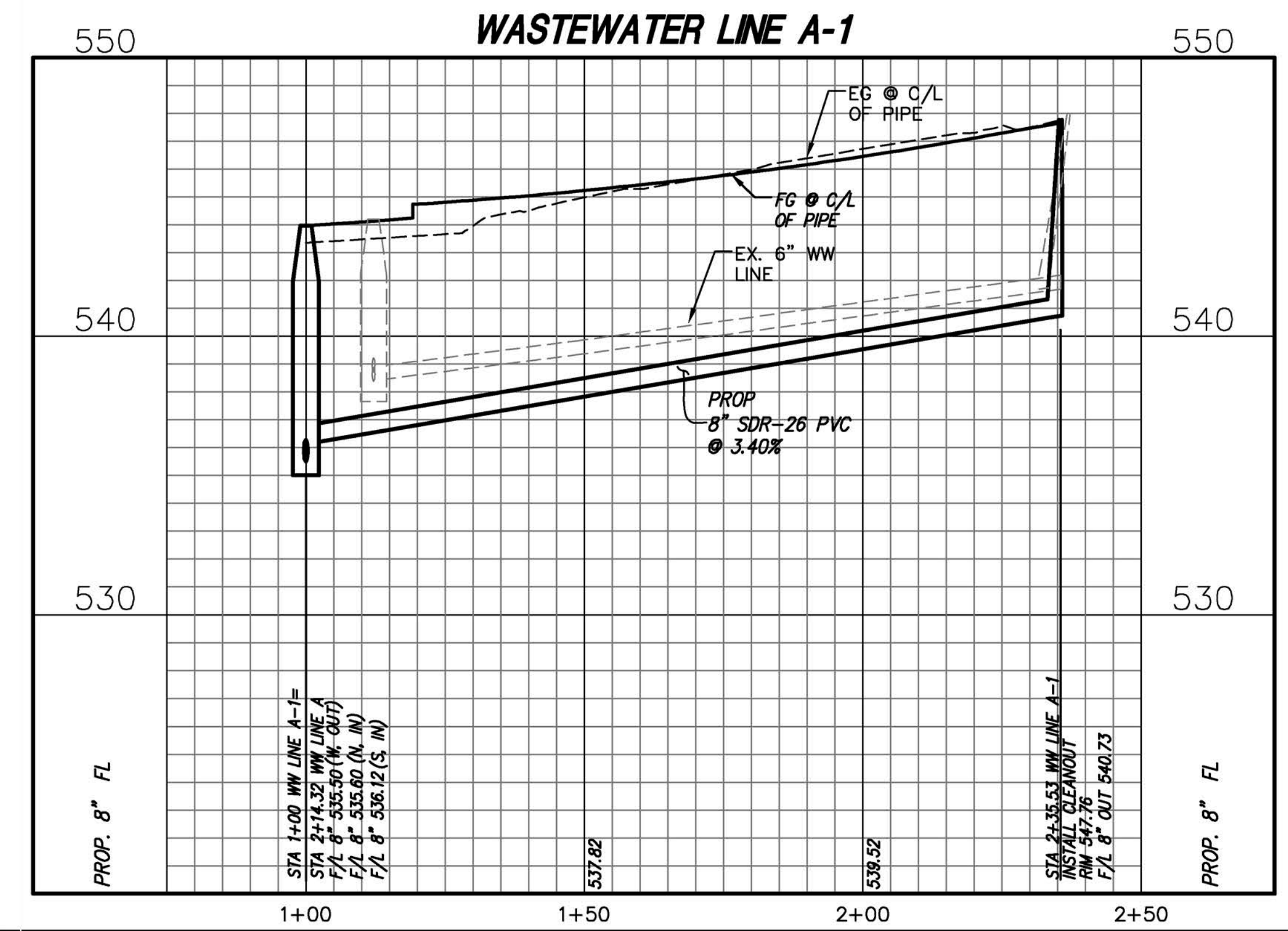
Drawing: P:\PROJECTS\WML18219\CAD\Sheets\PHASE 1 - NORTH\20 WASTEWATER LINE A-1 & A-2.dwg at Oct 03, 2019 - 3:16pm by jeballe  
 Layout: 20 WASTEWATER LINE A-1 & A-2 - xref: wml18219.dwg - xcd: wml18219.dwg - xcd: wml18219.dwg - xcd: wml18219.dwg



**UTILITY NOTE**

THE UTILITIES SHOWN ON THE PLANS WERE COMPILED FROM VARIOUS SOURCES AND ARE INTENDED TO SHOW THE GENERAL EXISTENCE AND LOCATION OF UTILITIES IN THE AREA OF CONSTRUCTION. THE ENGINEER ASSUMES NO RESPONSIBILITY FOR THE ACCURACY OF THE UTILITY INFORMATION SHOWN ON THE PLANS. THE CONTRACTOR SHALL VERIFY THE EXACT LOCATION OF ALL UTILITIES PRIOR TO CONSTRUCTION. THE CONTRACTOR SHALL CONTACT UTILITY COMPANIES 48 HOURS IN ADVANCE OF ANY CONSTRUCTION ACTIVITIES IN ORDER TO DETERMINE IF THERE IS ANY CONFLICT WITH THE PROPOSED FACILITIES. THE CONTRACTOR SHALL NOTIFY THE ENGINEER IMMEDIATELY WHEN CONFLICTS WITH EXISTING UTILITIES ARE DISCOVERED.

LEGEND	
	PROP WATER LINE
	PROP FIRE HYDRANT
	PROP WATER VALVE
	PROP WATER METER
	PROP WASTEWATER LINE
	PROP WASTEWATER SERVICE LINE
	PROP WASTEWATER MANHOLE
	PROP WW CLEANOUT ON MAIN
	PROP WW CLEANOUT ON SERVICE LINE
	EX WATER METER
	EX WATER VALVE
	EX SPRINKLER VALVE
	EX FIRE HYDRANT
	EX WATER LINE
	EX WASTEWATER LINE
	EX WASTEWATER MANHOLE
	EX WASTEWATER CLEANOUT
	EX OVERHEAD ELECTRIC
	EX POWER POLE
	EX GAS LINE



**WW SERVICE LINE NOTE:**  
 CONTRACTOR SHALL INSTALL SINGLE STACK 4" DOUBLE SWEEP TEE CLEANOUT AT THE PROPERTY LINE AND CONNECT TO EXISTING SERVICE LINE.

**WATER LINE CROSSING NOTE:**  
 ENCASE 20 LF OF 8" PVC PIPE BY CEMENT STABILIZED SAND WHICH SHALL BE CENTERED AT PROPOSED WATER LINE CROSSING, AND SHALL MEET THE FOLLOWING REQUIREMENTS:  
 i) INCLUDE AT LEAST 160 LBS OF CEMENT FOR EVERY CUBIC YARD OF SAND.  
 ii) SHALL BE INSTALLED BEGINNING ONE-QUARTER PIPE DIAMETER BELOW THE CENTERLINE OF PIPE.  
 iii) MINIMUM 12" ABOVE THE TOP OF THE PIPE.

THE CEMENT SAND STABILIZATION IS SUBSIDIARY TO PIPE INSTALLATION. NO SEPARATE PAY.

**WW LINE NOTE:**  
 \* CONTRACTOR SHALL FIELD VERIFY FLOW LINE INFORMATION PRIOR TO CONSTRUCTION.

no.	revision	by	date

**teague nall and perkins, inc**  
 825 Watters Creek Blvd., Suite M300  
 Allen, Texas 75013  
 214.461.9867 ph 214.461.9864 fx  
 www.tnppinc.com  
 TBPE: F-230; TBPLS: 10011600, 10011601, 10194381



scale  
 when bar is  
 1 inch long

horiz  
 1" = 20'

vert  
 1" = 4'

SEP 2019



**RECORD DOCUMENTS**

THESE PLANS ARE FOR THE OWNER'S USE AS RECORD SET OF THE CONSTRUCTED PROJECT, AND REFLECT REVISIONS AND CONSTRUCTION RELATED CHANGES AS RECORDED BY THE CONTRACTOR. CHANGES MADE FROM THE ORIGINAL CONSTRUCTION DOCUMENTS DO NOT DEPORT ENGINEERING AND ARE NOT THE RESPONSIBILITY OF TEAGUE NALL & PERKINS, INC. OR THE ENGINEER OF RECORD ON THE ORIGINAL DOCUMENTS. ORIGINAL PLANS RELEASED FOR CONSTRUCTION WERE SEALED BY GYANENDRA POKHREL, P.E. NO. 118159 ON 09/28/2018.

**CITY OF ROCKWALL, TEXAS**  
**HIGHLAND DRIVE RECONSTRUCTION, PHASE I**  
 (DRIFTWOOD STREET TO BEDFORD FALLS LANE)  
**WASTEWATER LINE A-1 & A-2**

tnp project  
 RWL18219  
 sheet  
**23**