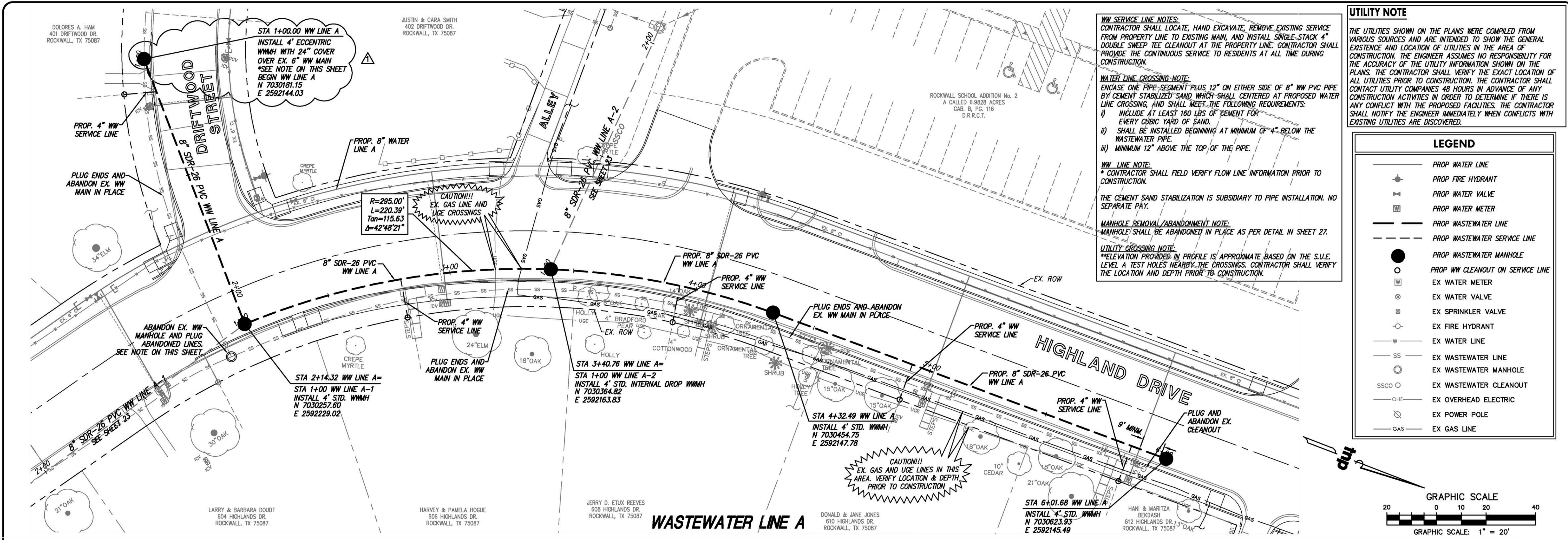


Drawing: P:\PROJECTS\WML18219\CAD\Sheets\Phase 1 - NORTH\20 WASTEWATER LINE A-1 & A-2.dwg at Oct 03, 2019 - 3:06pm by jeballe  
 Layout: 19 WASTEWATER LINE A Xrefs: xref-border.dwg -- x3d-water.dwg -- x3d-paving.dwg -- x3d-base.dwg -- x3d-school\_site.dwg



**WW SERVICE LINE NOTES:**  
 CONTRACTOR SHALL LOCATE, HAND EXCAVATE, REMOVE EXISTING SERVICE FROM PROPERTY LINE TO EXISTING MAIN, AND INSTALL SINGLE-STACK 4" DOUBLE SWEEP TEE CLEANOUT AT THE PROPERTY LINE. CONTRACTOR SHALL PROVIDE THE CONTINUOUS SERVICE TO RESIDENTS AT ALL TIME DURING CONSTRUCTION.

**WATER LINE CROSSING NOTE:**  
 ENCASE ONE PIPE SEGMENT PLUS 12" ON EITHER SIDE OF 8" WW PVC PIPE BY CEMENT STABILIZED SAND WHICH SHALL CENTERED AT PROPOSED WATER LINE CROSSING, AND SHALL MEET THE FOLLOWING REQUIREMENTS:  
 i) INCLUDE AT LEAST 160 LBS OF CEMENT FOR EVERY CUBIC YARD OF SAND.  
 ii) SHALL BE INSTALLED BEGINNING AT MINIMUM OF 4" BELOW THE WASTEWATER PIPE.  
 iii) MINIMUM 12" ABOVE THE TOP OF THE PIPE.

**WW LINE NOTE:**  
 \* CONTRACTOR SHALL FIELD VERIFY FLOW LINE INFORMATION PRIOR TO CONSTRUCTION.

THE CEMENT SAND STABILIZATION IS SUBSIDIARY TO PIPE INSTALLATION. NO SEPARATE PAY.

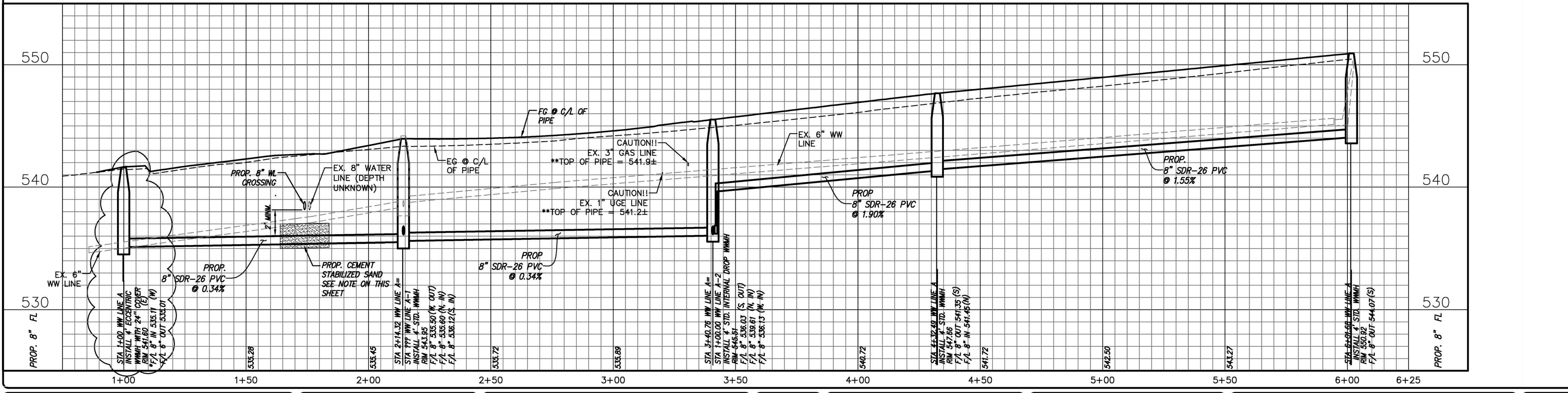
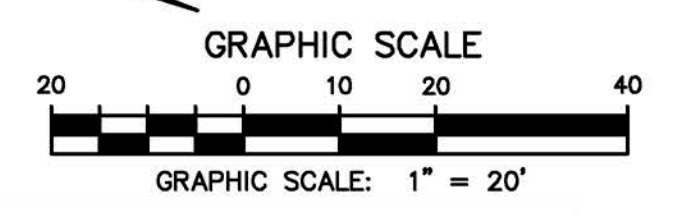
**MANHOLE REMOVAL/ABANDONMENT NOTE:**  
 MANHOLE SHALL BE ABANDONED IN PLACE AS PER DETAIL IN SHEET 27.

**UTILITY CROSSING NOTE:**  
 \*\*ELEVATION PROVIDED IN PROFILE IS APPROXIMATE BASED ON THE S.U.E. LEVEL. A TEST HOLES NEARBY THE CROSSINGS. CONTRACTOR SHALL VERIFY THE LOCATION AND DEPTH PRIOR TO CONSTRUCTION.

**UTILITY NOTE**  
 THE UTILITIES SHOWN ON THE PLANS WERE COMPILED FROM VARIOUS SOURCES AND ARE INTENDED TO SHOW THE GENERAL EXISTENCE AND LOCATION OF UTILITIES IN THE AREA OF CONSTRUCTION. THE ENGINEER ASSUMES NO RESPONSIBILITY FOR THE ACCURACY OF THE UTILITY INFORMATION SHOWN ON THE PLANS. THE CONTRACTOR SHALL VERIFY THE EXACT LOCATION OF ALL UTILITIES PRIOR TO CONSTRUCTION. THE CONTRACTOR SHALL CONTACT UTILITY COMPANIES 48 HOURS IN ADVANCE OF ANY CONSTRUCTION ACTIVITIES IN ORDER TO DETERMINE IF THERE IS ANY CONFLICT WITH THE PROPOSED FACILITIES. THE CONTRACTOR SHALL NOTIFY THE ENGINEER IMMEDIATELY WHEN CONFLICTS WITH EXISTING UTILITIES ARE DISCOVERED.

**LEGEND**

	PROP WATER LINE
	PROP FIRE HYDRANT
	PROP WATER VALVE
	PROP WATER METER
	PROP WASTEWATER LINE
	PROP WASTEWATER SERVICE LINE
	PROP WASTEWATER MANHOLE
	PROP WW CLEANOUT ON SERVICE LINE
	EX WATER METER
	EX WATER VALVE
	EX SPRINKLER VALVE
	EX FIRE HYDRANT
	EX WATER LINE
	EX WASTEWATER LINE
	EX WASTEWATER MANHOLE
	EX WASTEWATER CLEANOUT
	EX OVERHEAD ELECTRIC
	EX POWER POLE
	EX GAS LINE



no.	revision	by	date

**teague nall and perkins, inc**  
 825 Watters Creek Blvd., Suite M300  
 Allen, Texas 75013  
 214.461.9867 ph 214.461.9864 fx  
 www.tnpsc.com  
 TBPE: F-230; TBPLS: 10011600, 10011601, 10194381



scale  
 when bar is  
 1 inch long  
 horiz  
 1" = 20'  
 vert  
 1" = 4'  
 SEP 2019



**RECORD DOCUMENTS**  
 THESE PLANS ARE FOR THE OWNER'S USE AS RECORD SET OF THE CONSTRUCTED PROJECT, AND REFLECT REVISIONS AND CONSTRUCTION RELATED CHANGES AS RECORDED BY THE CONTRACTOR. CHANGES MADE FROM THE ORIGINAL CONSTRUCTION DOCUMENTS DO NOT DENOTE ENGINEERING AND ARE NOT THE RESPONSIBILITY OF TEAGUE NALL & PERKINS, INC. OR THE ENGINEER OF RECORD ON THE ORIGINAL DOCUMENTS. ORIGINAL PLANS RELEASED FOR CONSTRUCTION WERE SEALED BY GYANENDRA POKHREL, P.E. NO. 118159 ON 09/28/2018.

**CITY OF ROCKWALL, TEXAS**  
**HIGHLAND DRIVE RECONSTRUCTION, PHASE I**  
 (DRIFTWOOD STREET TO BEDFORD FALLS LANE)  
**WASTEWATER LINE A**

inp project  
 RWL18219  
 sheet  
**22**