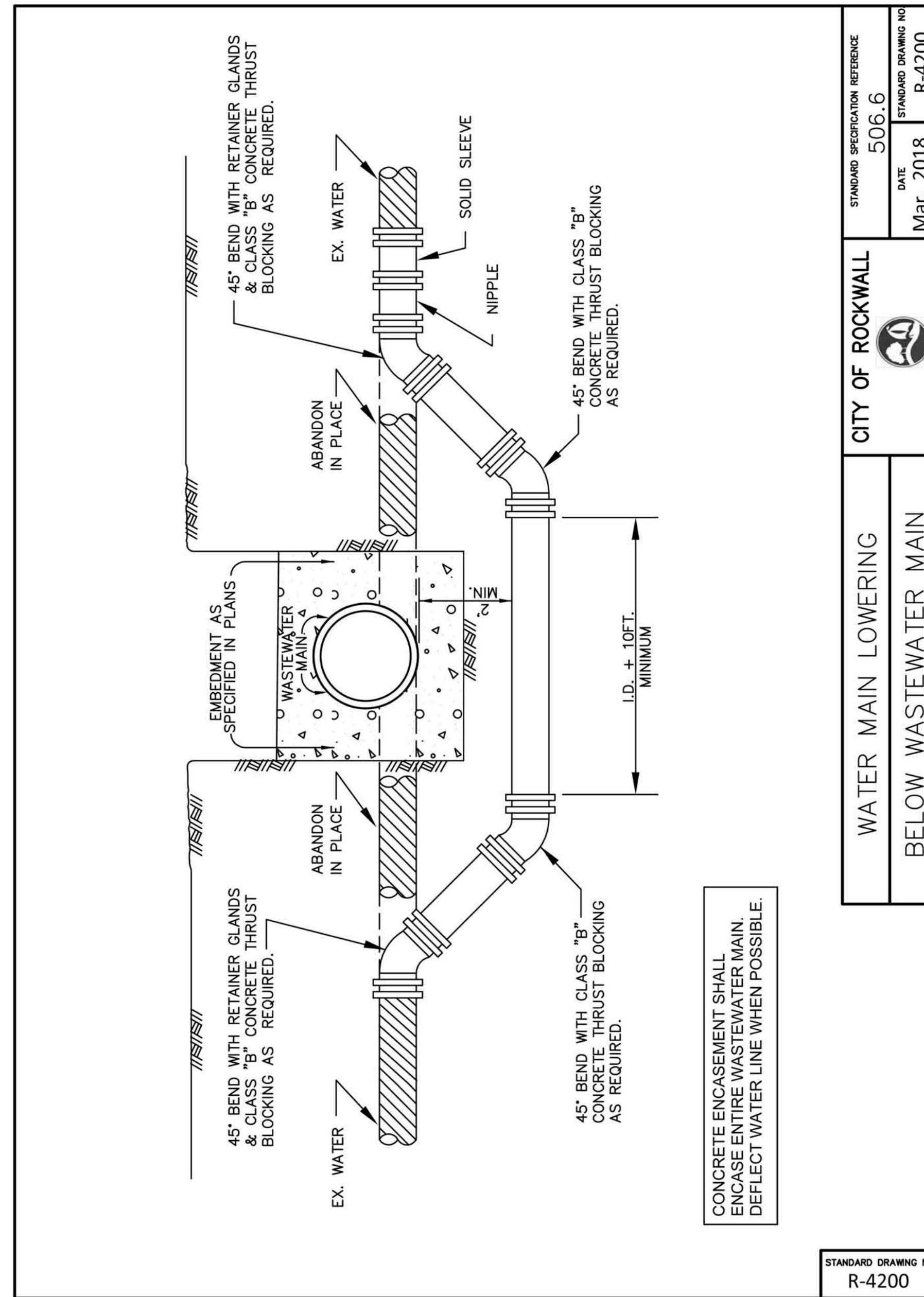
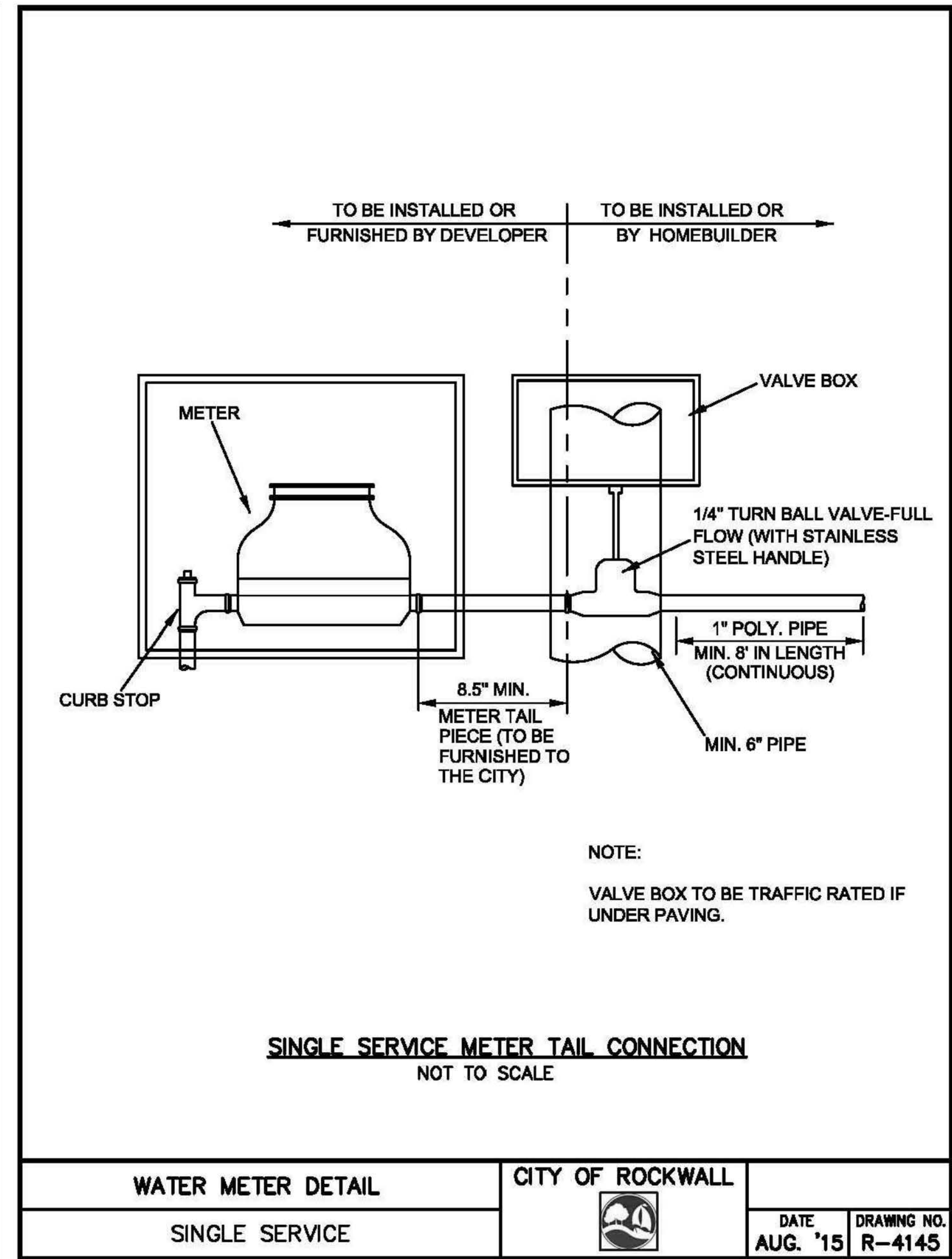


Drawing: P:\PROJECTS\RM\18219\CAD\Sheets\PHASE 1 - NORTH\18 WATER DETAILS 5 OF 5.dwg at Sep 27, 2018-10:35am by jekolle
 Layout: 14 - WATER DETAILS 1 OF 5 - Water - xref-borders.dwg



STANDARD SPECIFICATION REFERENCE	506.6
DATE	Mar. 2018
STANDARD DRAWING NO	R-4200
CITY OF ROCKWALL	
WATER MAIN LOWERING	
BELOW WASTEWATER MAIN	
STANDARD DRAWING NO	R-4200



WATER METER DETAIL	CITY OF ROCKWALL	DATE	DRAWING NO.
SINGLE SERVICE		AUG. '15	R-4145

no.	revision	by	date

teague nall and perkins, inc
 825 Watters Creek Blvd., Suite M300
 Allen, Texas 75013
 214.461.9867 ph 214.461.9864 fx
 www.tnpsc.com
 TBPE: F-230; TBPLS: 10011600, 10011601, 10194381

City of Rockwall
The New Horizon

scale	when bar is 1 inch long
horiz	N/A
vert	N/A
SEP 2019	

RECORD DOCUMENTS
 THESE PLANS ARE FOR THE OWNER'S USE AS RECORD SET OF THE CONSTRUCTED PROJECT, AND REFLECT REVISIONS AND CONSTRUCTION RELATED CHANGES AS RECORDED BY THE CONTRACTOR. CHANGES MADE FROM THE ORIGINAL CONSTRUCTION DOCUMENTS DO NOT DEPICT ENGINEERING AND ARE NOT THE RESPONSIBILITY OF TEAGUE NALL & PERKINS, INC. OR THE ENGINEER OF RECORD ON THE ORIGINAL DOCUMENTS. ORIGINAL PLANS RELEASED FOR CONSTRUCTION WERE SEALED BY GYANENDRA POKHREL, P.E. NO. 118159 ON 09/28/2018.

CITY OF ROCKWALL, TEXAS
HIGHLAND DRIVE RECONSTRUCTION, PHASE I
 (DRIFTWOOD STREET TO BEDFORD FALLS LANE)
WATER DETAILS 3 OF 5

tnp project
 RWL18219
 sheet
19