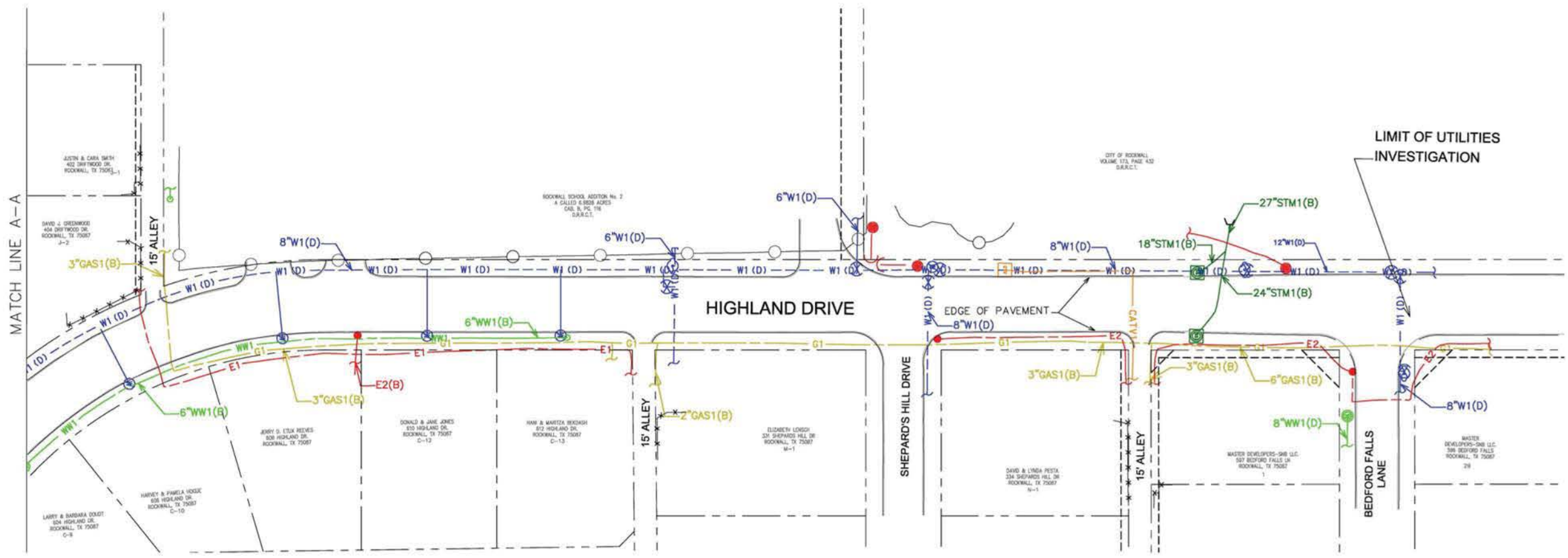
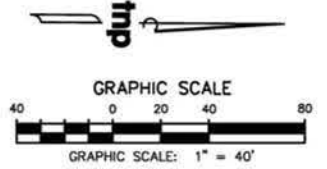


* NOT FOUND IN THE FIELD AND DRAWN IN PER AS-BUILT DRAWINGS



Drawing: N:\PROJECTS\1818219\1818219_02_SWEETS\02-SWEETS\02-Highland_Paving.dwg of Sep 21, 2018 10:17 am by lina.oidat
 Layout: 1818219_PAVING.dwg FROM MATCH LINE A-A TO END
 Project: City of Rockwall
 Title: PAVING, DRAINAGE, WATER AND WASTEWATER IMPROVEMENTS FOR HIGHLAND DRIVE
 Date: 09/21/2018

no.	revision	by	date

teague nall and perkins, inc
 825 Watters Creek Blvd., Suite M300
 Allen, Texas 75013
 214.461.9867 ph 214.461.9864 fx
 www.tnpsc.com
 TBPE: F-230; TBPLS: 10011600, 10011601, 10194381

City of Rockwall
The New Horizon

scale
when bar is
1 inch long
horiz
1"=40'
vert
N/A
SEP 2018

RECORD DOCUMENTS
 THESE PLANS ARE FOR THE OWNER'S USE AS RECORD SET OF THE CONSTRUCTED PROJECT, AND REFLECT REVISIONS AND CONSTRUCTION RELATED CHANGES AS RECORDED BY THE CONTRACTOR. CHANGES MADE FROM THE ORIGINAL CONSTRUCTION DOCUMENTS DO NOT DEPICT ENGINEERING AND ARE NOT THE RESPONSIBILITY OF TEAGUE NALL & PERKINS, INC. OR THE ENGINEER OF RECORD ON THE ORIGINAL DOCUMENTS. ORIGINAL PLANS RELEASED FOR CONSTRUCTION WERE SEALED BY LINA NAJEEB OBEIDAT, P.E. NO. 123510 ON 09/21/2018.

CITY OF ROCKWALL, TEXAS
 PAVING, DRAINAGE, WATER AND WASTEWATER IMPROVEMENTS FOR
HIGHLAND DRIVE
 Existing Utilities from
 Matchline Line A-A to End

tnp project
RWL18219
sheet
09