

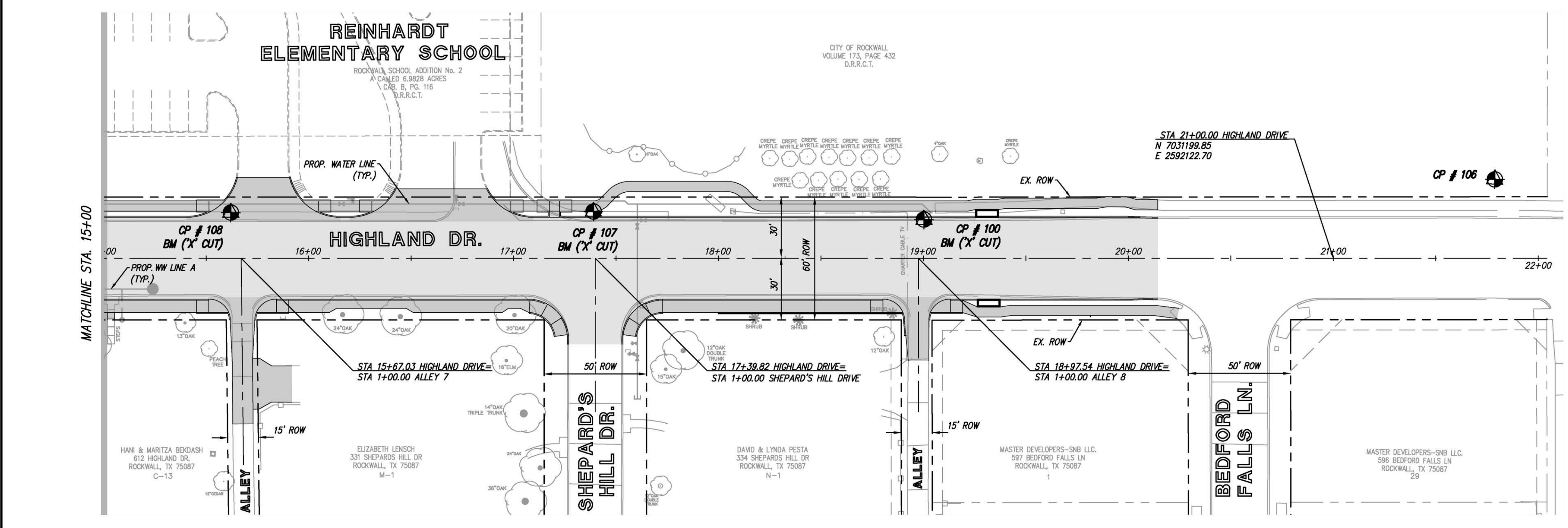
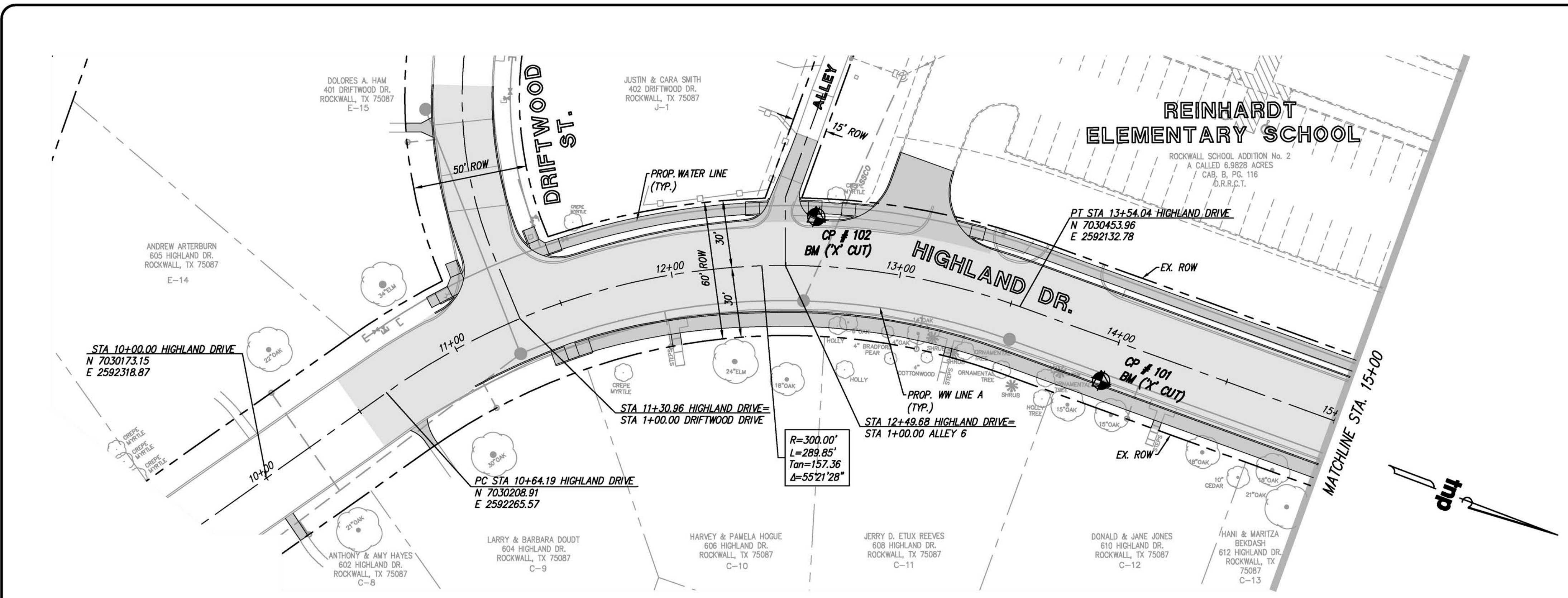
DATUM BASE NOTE:
 BEARINGS ARE REFERENCED TO GRID NORTH OF THE TEXAS COORDINATE SYSTEM OF 1983 (NORTH CENTRAL ZONE 4202; NAD83(2011) EPOCH 2011) AS DERIVED FROM THE CITY OF ROCKWALL MONUMENT NETWORK COR-13 AND COR-15. ALL DISTANCES SHOWN ARE SURFACE DISTANCES USING A COMBINED SCALE FACTOR OF 1.000146912. THE BOUNDARY LINES SHOWN IN THIS DRAWING ARE APPROXIMATE. A BOUNDARY SURVEY WAS NOT PERFORMED ON THESE PROPERTIES. THIS DRAWING SHOULD NOT BE RELIED ON FOR THE ACTUAL LOCATION OF PROPERTY LINES.

LEGEND

	LIMIT OF PAVING IMPROVEMENTS
--	------------------------------

CONTROL POINT TABLE

POINT No.	NORTHING	EASTING	DESCRIPTION
CP #100	7030999.82	2592106.54	CP X-CUT SET
CP #101	7030498.60	2592150.53	CP X-CUT SET
CP #102	7030357.13	2592127.61	CP X-CUT SET
CP #106	7031278.09	2592083.12	60D-NAIL
CP #107	7030838.49	2592104.80	CP X-CUT SET
CP #108	7030661.56	2592107.71	CP X-CUT SET



PROJECT BENCHMARKS

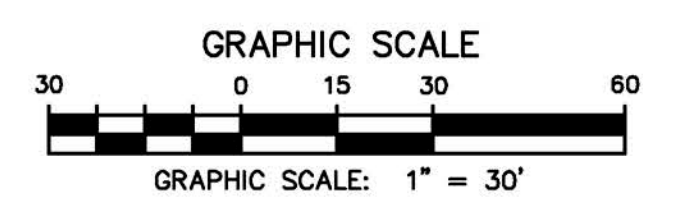
BM-100
 "X" CUT ON TOP OF CURB ON THE WEST CURB OF HIGHLAND DRIVE, APPROXIMATELY 200 FEET NORTH OF THE NORTHERN DRIVEWAY TO SCHOOL. ELEVATION =551.39

BM-101
 "X" CUT ON TOP OF CURB ON THE EAST CURB OF HIGHLAND DRIVE, APPROXIMATELY 340 FEET SOUTH OF SHEPARD'S HILL DRIVE. ELEVATION =548.23

BM-102
 "X" CUT ON TOP OF CURB AT NW CORNER OF THE INTERSECTION OF HIGHLAND DRIVE AND ALLEY, SOUTH OF THE SOUTH DRIVEWAY TO ELEMENTARY SCHOOL. ELEVATION =545.14

BM-107
 "X" CUT ON TOP OF SW ON THE WEST SIDE OF HIGHLAND DRIVE, APPROXIMATELY 20 FEET NORTH OF THE NORTH DRIVEWAY TO SCHOOL. ELEVATION =552.92

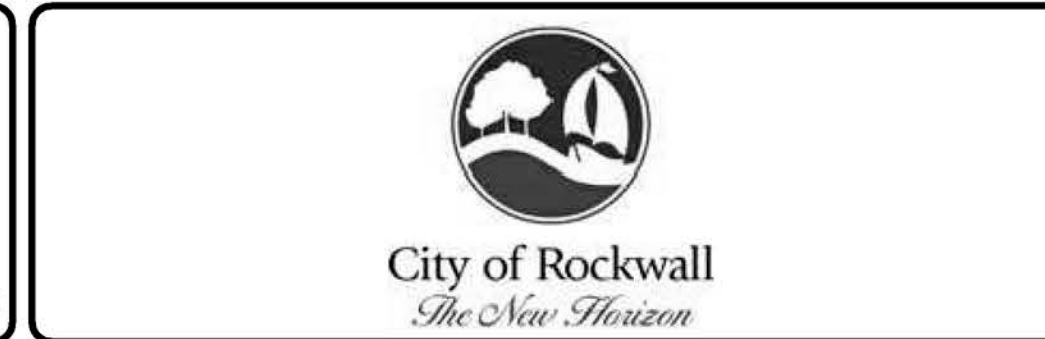
BM-108
 "X" CUT ON TOP OF CURB ON THE WEST CURB OF HIGHLAND DRIVE, APPROXIMATELY 105 FEET SOUTH OF THE NORTH DRIVEWAY TO SCHOOL. ELEVATION =551.66



Drawing: P:\PROJECTS\RWL18219\CAD\Shepards\PHASE 1 - NORTH\03 PROJECT CONTROL LAYOUT.dwg at Sep 27, 2018 - 10:33am by jbellie
 Layout: 1 - File: tnp-18219.dwg - Add-water.dwg - Add-water.dwg - Add-water.dwg - Add-water.dwg - Add-water.dwg - Add-water.dwg

no.	revision	by	date

teague nall and perkins, inc
 825 Watters Creek Blvd., Suite M300
 Allen, Texas 75013
 214.461.9867 ph 214.461.9864 fx
 www.tnpsc.com
 TBPE: F-230; TBPLS: 10011600, 10011601, 10194381



scale
 when bar is 1 inch long
 horiz
 1" = 30'
 vert
 N/A
 SEP 2019



RECORD DOCUMENTS
 THESE PLANS ARE FOR THE OWNER'S USE AS RECORD SET OF THE CONSTRUCTED PROJECT, AND REFLECT REVISIONS AND CONSTRUCTION RELATED CHANGES AS RECORDED BY THE CONTRACTOR. CHANGES MADE FROM THE ORIGINAL CONSTRUCTION DOCUMENTS DO NOT DEPICT ENGINEERING AND ARE NOT THE RESPONSIBILITY OF TEAGUE NALL & PERKINS, INC. OR THE ENGINEER OF RECORD ON THE ORIGINAL DOCUMENTS. ORIGINAL PLANS RELEASED FOR CONSTRUCTION WERE SEALED BY GYANENDRA POKHREL, P.E. NO. 118159 ON 09/28/2018.

CITY OF ROCKWALL, TEXAS
HIGHLAND DRIVE RECONSTRUCTION, PHASE I
 (DRIFTWOOD STREET TO BEDFORD FALLS LANE)
PROJECT CONTROL LAYOUT

tnp project
 RWL18219
 sheet
03