

CONSTRUCTION PLANS FOR HARBORVIEW DRIVE SANITARY SEWER RELOCATION CIP 2015-017 CITY OF ROCKWALL, TEXAS

CITY OF ROCKWALL

MAYOR:

Jim Pruitt

CITY COUNCIL:

David White
John Hohenshelt
Kevin Fowler
Dennis Lewis, Mayor Pro Tem
Scott Milder
Mike Townsend

CITY MANAGER:

Rick Crowley



LOCATION MAP

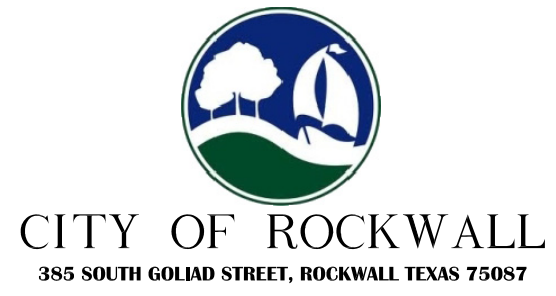
INDEX of SHEETS

Sheet No.	Title
1	Cover Sheet
2	General Notes
3	Sanitary Sewer Plan
4	Sanitary Sewer Profile

"RECORD DRAWINGS"
THESE RECORD DRAWINGS ARE A COMPILATION OF A COPY OF THE SEALED ENGINEERING DRAWINGS FOR THIS PROJECT, MODIFIED BY ADDENDA, CHANGE ORDERS, AND INFORMATION FURNISHED BY THE CONTRACTOR. THE INFORMATION SHOWN ON THESE RECORD DRAWINGS THAT WAS PROVIDED BY THE CONTRACTOR OR OTHERS NOT ASSOCIATED WITH THE DESIGN ENGINEER CANNOT BE VERIFIED FOR ACCURACY OR COMPLETENESS. THE ORIGINAL SEALED DRAWINGS ARE ON FILE AT THE OFFICES OF BINKLEY & BARFIELD, INC.

NOTE:
THE ORIGINAL ENGINEERING FIRM BINKLEY & BARFIELD, C&P, INC. TBPE F-3185 DISSOLVED ON JULY 1, 2016 AND MERGED INTO BINKLEY & BARFIELD, INC. TBPE F-257.

The seal appearing on this document was authorized on April 6, 2016 by Michael Cummings, P.E. Tx. No. 41566. Alteration of a sealed document without proper notification to the responsible engineer is an offense under the Texas Engineering Practice Act.



1801 Gateway Blvd. Suite 101 Richardson, Texas 75080
772.644.2800 Fax 972.644.2817
www.bbcpi.com
Texas Registration Number F-3185

April 2016

BC15026 HARBORVIEW DR SEWER RELOCATION APRIL 2016

1. ALL CONSTRUCTION SHALL BE IN ACCORDANCE WITH THE CITY OF ROCKWALL STANDARDS, SPECIFICATIONS & STANDARD DETAILS AND N.C.T.C.O.G. STANDARD SPECIFICATIONS 3rd EDITION.

2. BEFORE BEGINNING CONSTRUCTION, THE CONTRACTOR SHALL PREPARE A CONSTRUCTION SEQUENCE SCHEDULE. THE CONSTRUCTION SCHEDULE IS TO BE SUBMITTED TO THE CITY FOR APPROVAL.

3. UTILITIES SHOWN ON THE PLANS WERE TAKEN FROM FIELD SURVEYS AND INFORMATION PROVIDED BY THE UTILITY COMPANIES. THE COMPLETENESS AND THE ACCURACY OF THIS DATA IS NOT GUARANTEED. THE CONTRACTOR IS RESPONSIBLE FOR VERIFYING THE LOCATION OF ALL UNDERGROUND UTILITIES AND STRUCTURES AND PROTECTING THEM FROM DAMAGE DURING CONSTRUCTION.

4. WORK MAY NOT BE BACKFILLED OR COVERED UNTIL IT HAS BEEN INSPECTED BY THE CITY.

5. MATERIAL TESTING SHALL BE PERFORMED BY AN INDEPENDENT TESTING LABORATORY SELECTED AND PAID FOR BY THE CITY.

6. ALL EXCAVATION ON THE PROJECT IS UNCLASSIFIED.

7. ALL SAW CUTS OF EXISTING PAVEMENT ARE TO BE "FULL DEPTH".

8. ALL AREAS DISTURBED DURING CONSTRUCTION INCLUDING RIGHT OF WAY WILL BE SODDED WITH GRASS THAT MATCHES EXISTING LAWN & RIGHT-OF-WAYS. SODDING AND FERTILIZING SHALL BE DONE IN ACCORDANCE WITH THE N.C.T.C.O.G. STANDARD SPECIFICATIONS FOR PUBLIC WORKS CONSTRUCTION 3rd EDITION (ITEMS 2.15.1, 2.15.2, 3.9, 3.10). THE CONTRACTOR SHALL MAINTAIN SODDED AREAS FOR A TWO (2) MONTH PERIOD FOLLOWING PLANTING OR UNTIL THE GRASS HAS ESTABLISHED A MINIMUM HEIGHT OF TWO INCHES.

9. THE CONTRACTOR SHALL REMOVE & REINSTALL IN ORIGINAL LOCATION ALL EXISTING TRAFFIC CONTROL SIGNS AFFECTED BY THE CONSTRUCTION.

10. CONTRACTOR SHALL PROVIDE THE CITY ENGINEER WITH A TRAFFIC CONTROL PLAN, AT LEAST 48 HOURS BEFORE ANY WORK IN A CITY STREET. TRAFFIC CONTROL MEASURES SHALL CONFORM TO PART VI OF THE 'TEXAS MANUAL ON UNIFORM TRAFFIC CONTROL DEVICES' AND THE CITY OF ROCKWALL 'WORK ZONE TRAFFIC CONTROL MANUAL'. TRAFFIC CONTROL MEASURES SHALL BE INSTALLED BY THE CONTRACTOR FOR ANY WORK ACTIVITY THAT TAKES PLACE ON OR ADJACENT TO ANY CITY STREET OR ROADWAY. THE TRAFFIC CONTROL PLAN SHALL BE DESIGNED AND SEALED BY AN ENGINEER LICENSED IN THE STATE OF TEXAS.

11. MEGA-LUGS OR APPROVED EQUAL SHALL BE INSTALLED AT ALL FITTINGS.

12. ACCESSIBLE PEDESTRIAN ROUTES ON PUBLIC RIGHTS-OF-WAY AND PRIVATE PROPERTY SHALL COMPLY WITH AMERICANS WITH DISABILITIES ACT ACCESSIBILITY GUIDELINES (ADAAG) AND TEXAS ACCESSIBILITY STANDARDS (TAS). DESIGN AND CONSTRUCTION OF ALL CURB RAMPS ON PUBLIC RIGHTS-OF-WAY SHALL BE IN ACCORDANCE WITH TEXAS DEPARTMENT OF TRANSPORTATION STANDARD DETAIL PED-12A, SHEETS 1 THROUGH 4. DESIGN AND CONSTRUCTION OF ALL SIDEWALKS SHALL BE IN ACCORDANCE WITH CITY OF ROCKWALL STANDARD DETAILS WITH PASSING AREAS HAVING A MINIMUM 5-FOOT BY 5-FOOT SIZE AT INTERVALS NOT EXCEEDING 200 FEET. CURB RAMPS THAT ARE PART OF ACCESSIBLE ROUTES ON PRIVATE PROPERTY MAY BE CONSTRUCTED IN ACCORDANCE WITH TxDOT STANDARD DETAIL PED-12A, SHEETS 1 THROUGH 4, OR MAY BE CONSTRUCTED IN ACCORDANCE WITH A DESIGN SUBMITTED AND APPROVED BY THE TEXAS DEPARTMENT OF LICENSING AND REGULATION.

13. FRANCHISE UTILITY CONTACTS: CALL 1-800-344-8377 FOR LINE LOCATES (48 HR. ADVANCE)
EMERGENCY CONTACT NUMBERS
"ONCOR" - 888-313-4747
"ATMOS (GAS)" - 800-442-7259
"AT&T" - 800-286-8313
"CHARTER" - 800-314-7195
"CITY OF ROCKWALL" SERVICE CENTER- 972-771-7730

14. MAILBOXES SHALL BE PROTECTED BY CONTRACTOR THROUGHOUT CONSTRUCTION. WHERE NECESSARY TO TEMPORARILY RELOCATE MAILBOX, IT SHALL BE DONE WITHOUT DAMAGING MAILBOX. MAILBOX SHALL BE RE-INSTALLED IN ORIGINAL LOCATION UPON COMPLETION OF CONSTRUCTION.

15. THE EXISTING TOPOGRAPHIC FEATURES ON THE PLAN SHEETS ARE COMPILED FROM PARTIAL FIELD SURVEYS, CITY GIS MAPS AND VISUAL OBSERVATION. THERE ARE EXISTING FEATURES WHICH ARE NOT SHOWN ON THESE PLANS. IT IS CONTRACTOR'S RESPONSIBILITY TO VERIFY LOCATIONS OF ALL IMPROVEMENTS AND NOTIFY THE ENGINEER IF CONFLICTS EXIST.

16. THE CONTRACTOR SHALL BE REQUIRED TO PREPARE A PRECONSTRUCTION VIDEO OF THE PROJECT LIMITS CLEARLY SHOWING THE LOCATION AND CONDITION OF ALL IMPROVEMENTS WITHIN AND ADJACENT TO THE PROJECT AREA. FAILURE TO DOCUMENT THE CONDITION OF EXISTING IMPROVEMENTS MAY RESULT IN THE CONTRACTOR BEING REQUIRED TO REPAIR OR REPLACE DAMAGED PROPERTY OR FACILITIES.

17. THE CONTRACTOR SHALL OBTAIN A HYDRANT METER FROM THE CITY FOR CONSTRUCTION WATER.

18. REFER TO SPECIFICATIONS FOR LIST OF REQUIRED SUBMITTALS.

19. TRIMMING OF TREES SHALL BE ACCOMPLISHED USING A SAW OR PRUNING SHEARS. ALL CUT LIMBS OVER 1" DIAMETER SHALL BE PAINTED WITH TREE WOUND PAINT IMMEDIATELY AFTER TRIMMING.

20. CONTRACTOR SHALL REPLACE ANY TREES REMOVED OR DESTROYED WITHOUT OWNER'S PERMISSION OR SHALL PAY A FAIR MARKET VALUE (AS DETERMINED BY OWNER) TO THE OWNER.

21. ANY FENCES DAMAGED OR REMOVED BY CONSTRUCTION ACTIVITIES SHALL BE REPLACED AT THE SAME LOCATION WITH A FENCE OF EQUAL OR SUPERIOR QUALITY AT CONTRACTOR'S EXPENSE.

22. PROVIDE ACCESS FOR LANDOWNERS AT EXISTING ROADS AND DRIVES AT ALL TIMES.

23. CONTRACTOR SHALL SECURE EXCAVATION AT THE END OF EACH DAY. NO TRENCHES SHALL BE LEFT OPEN OVERNIGHT IN STREETS.

24. CONTRACTOR SHALL PROTECT ALL UNDERGROUND IRRIGATION SYSTEMS (KNOWN AND UNKNOWN). ALL DAMAGE SHALL BE REPAIRED BY IRRIGATOR LICENSED IN TEXAS (NO SEPARATE PAY ITEM).

25. ALL COMPACTION SHALL BE A MINIMUM OF 95% STANDARD PROCTOR DENSITY.

26. ALL CONCRETE SHALL BE MIN. 3,600 PSI (MIN 6.5 SACK MIX) FOR STREET & DRIVEWAY REPAIR. SIDEWALK REPLACEMENT CONCRETE TO BE MIN. 3,000 PSI (MIN 5.5 SACK MIX). NO SAND UNDER PAVING WILL BE ALLOWED.

27. COLOR FOR CURB RAMP TRUNCATED DOME PLATES SHALL MATCH CITY REQUIREMENTS.

28. IF ANY EXISTING UTILITIES ARE DAMAGED DUE TO CONSTRUCTION, THE CONTRACTOR SHALL BE RESPONSIBLE FOR REPAIRS AT NO ADDITIONAL COST.

29. SAWCUTS WITHIN 3' OF EXISTING PAVEMENT JOINTS MAY REQUIRE ADDITIONAL PAVEMENT REMOVAL AND REPLACEMENT UP TO THE ADJACENT JOINT. CONTRACTOR SHALL CONFIRM REMOVAL LIMITS WITH THE CITY OF ROCKWALL INSPECTOR PRIOR TO CONSTRUCTION.

30. SANITARY SEWER SHALL BE PLACED FIVE AND HALF FEET (5.5') BEHIND CURB. (N/A)

31. MINIMUM PUBLIC WASTEWATER PIPELINE SIZE IS 8"

32. ALL MANHOLE LIDS SHALL BE EITHER 30" PAMREX OR 30" PAMTIGHT (BOLT DOWN) OR APPROVED EQUAL.

33. ALL SANITARY SEWER MANHOLES SHALL BE SEALED IF IN AN AREA OF FLOW (EXAMPLE...PAVING, CREEK, DRAIN WAY, ETC).

34. RAVON EPOXY COATING, OR EQUAL, SHALL BE INSTALLED IN ALL NEW MANHOLES AND IN EXISTING MANHOLES BEING MODIFIED.

35. SANITARY SEWER LINES SHALL HAVE GREEN EMS LOCATOR PADS AT EVERY MANHOLE, CLEANOUT, AND SERVICE.

36. ALL SANITARY SEWER PIPE SHALL BE 8" ASTM D 2241 SDR 26 (160 psi) PRESSURE PIPE. GREEN IN COLOR. EMBEDMENT SHALL BE AS PER NCTCOG DRAWING #3030, CLASS "B-2" (MODIFIED). COMPACTED TO 95% STANDARD PROCTOR DENSITY WITH CITY REVISIONS.

37. ALL FORCE MAIN PIPE SHALL BE 6" C900 PRESSURE PIPE. GREEN IN COLOR. EMBEDMENT SHALL BE AS PER NCTCOG DRAWING #3030, CLASS "B-3" WITH CITY REVISIONS.

38. GATE VALVES SHALL BE RESILIENT SEAT GATE VALVES SUITABLE FOR SEWAGE SERVICE (AS MANUFACTURED BY MUELLER OR APPROVED EQUAL).

"RECORD DRAWINGS"
THESE RECORD DRAWINGS ARE A COMPILATION OF A COPY OF THE SEALED ENGINEERING DRAWINGS FOR THIS PROJECT; MODIFIED BY ADDENDA, CHANGE ORDERS, AND INFORMATION FURNISHED BY THE CONTRACTOR. THE INFORMATION SHOWN ON THESE RECORD DRAWINGS THAT WAS PROVIDED BY THE CONTRACTOR OR OTHERS NOT ASSOCIATED WITH THE DESIGN ENGINEER CANNOT BE VERIFIED FOR ACCURACY OR COMPLETENESS. THE ORIGINAL SEALED DRAWINGS ARE ON FILE AT THE OFFICES OF BINKLEY & BARFIELD, INC.

NOTE:
THE ORIGINAL ENGINEERING FIRM BINKLEY & BARFIELD-C&P, INC. TBPE F-3185 DISSOLVED ON JULY 1, 2016 AND MERGED INTO BINKLEY & BARFIELD, INC. TBPE F-257.

CAUTION EXISTING UTILITIES !!!

Existing utilities and underground facilities indicated on these plans have been located from reference information. It shall be the responsibility of the contractor to verify both horizontally and vertically the location of all existing utilities and underground facilities prior to construction, to take the necessary precautions in order to protect all facilities encountered. The contractor shall preserve and protect all existing utilities from damage during construction.

The seal appearing on this document was authorized on July 22, 2016 by Michael Cummings, P.E. Tx. No. 41566. Alteration of a sealed document without proper notification to the responsible engineer is an offense under the Texas Engineering Practice Act.



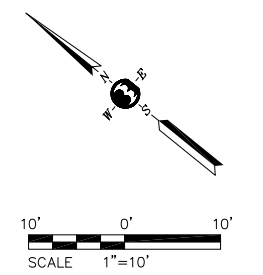
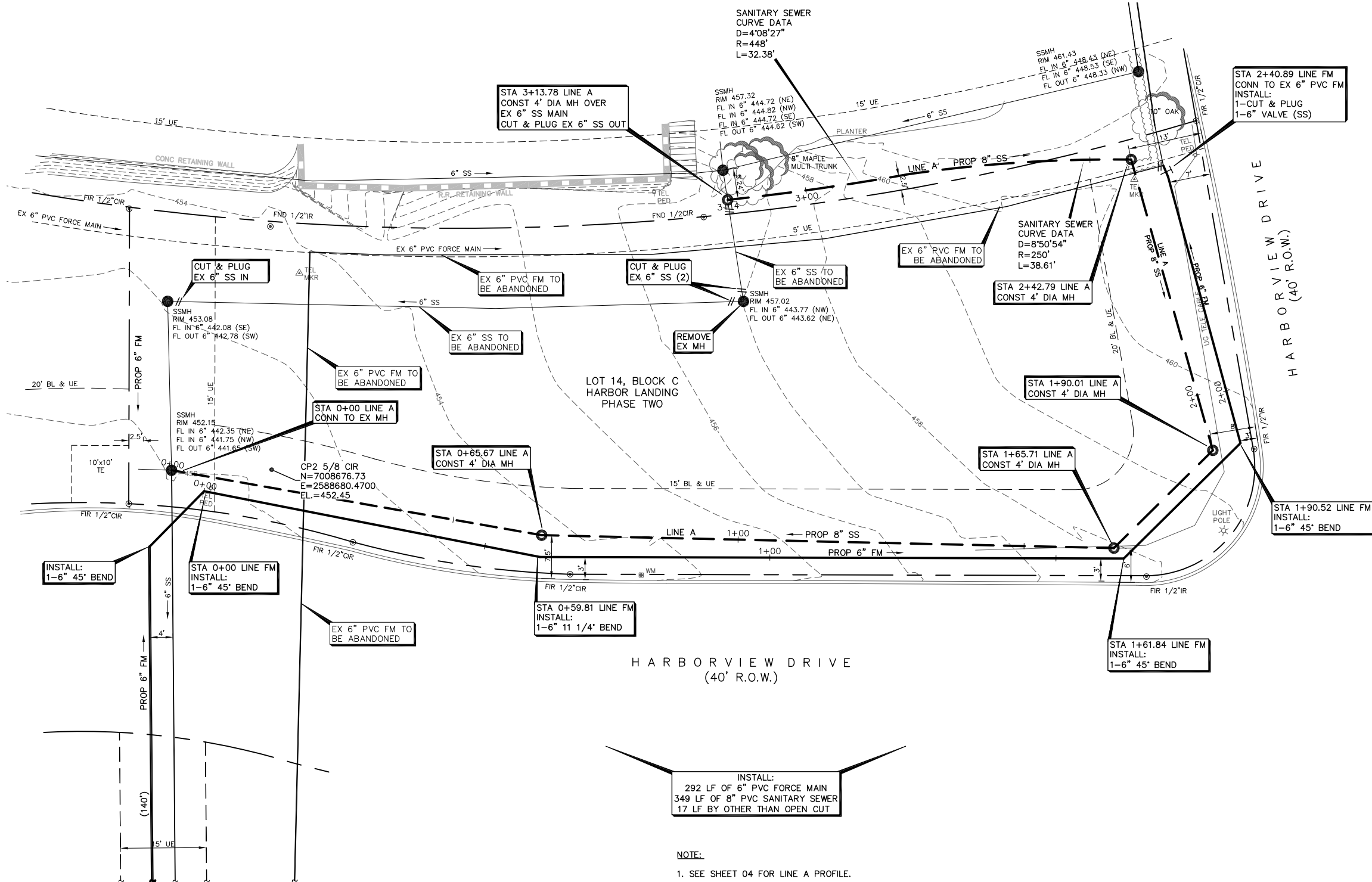
1801 Gateway Blvd. Suite 101 Richardson, Texas 75080
972.644.2800 Fax 972.644.2817
www.bbcpi.com Texas Registration Number F-3185

HARBORVIEW DRIVE
SANITARY SEWER RELOCATION

GENERAL NOTES/SPECIAL DETAILS

Scale:	Date:	Job No.:	02
NTS	Jan 25, 2017		

N:\BC15026 (Rockwall San Sewer)\05 CAD Files\BC15026GN.dwg - BC15026GN Plotted Jan 25, 2017 at 8:01am by bbywater | Last Saved by bbywater



INSTALL:
 292 LF OF 6" PVC FORCE MAIN
 349 LF OF 8" PVC SANITARY SEWER
 17 LF BY OTHER THAN OPEN CUT

NOTE:

- SEE SHEET 04 FOR LINE A PROFILE.
- 6" FORCE MAIN TO BE A MINIMUM OF 42" DEEP. CONTRACTOR TO VERIFY LOCATIONS AT CONNECTION POINTS. (HORIZONTAL & VERTICAL)
- ELEVATIONS:**
 THE ELEVATIONS HEREON WERE DERIVED FROM REDUNDANT RTK GPS OBSERVATIONS AND ARE BASED ON THE TEXAS COORDINATE SYSTEM, NORTH CENTRAL ZONE (4202) NAD 83 GEOID 12A.

"RECORD DRAWINGS"

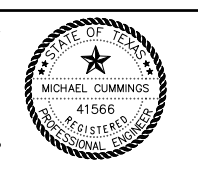
THESE RECORD DRAWINGS ARE A COMPILATION OF A COPY OF THE SEALED ENGINEERING DRAWINGS FOR THIS PROJECT, MODIFIED BY ADDENDA, CHANGE ORDERS, AND INFORMATION FURNISHED BY THE CONTRACTOR. THE INFORMATION SHOWN ON THESE RECORD DRAWINGS THAT WAS PROVIDED BY THE CONTRACTOR OR OTHERS NOT ASSOCIATED WITH THE DESIGN ENGINEER CANNOT BE VERIFIED FOR ACCURACY OR COMPLETENESS. THE ORIGINAL SEALED DRAWINGS ARE ON FILE AT THE OFFICES OF BINKLEY & BARFIELD, INC.

NOTE:
 THE ORIGINAL ENGINEERING FIRM BINKLEY & BARFIELD-C&P, INC. TBPE F-3185 DISSOLVED ON JULY 1, 2016 AND MERGED INTO BINKLEY & BARFIELD, INC. TBPE F-257.

CAUTION EXISTING UTILITIES !!!

Existing utilities and underground facilities indicated on these plans have been located from reference information. It shall be the responsibility of the contractor to verify both horizontally and vertically the location of all existing utilities and underground facilities prior to construction, to take the necessary precautions in order to protect all facilities encountered. The contractor shall preserve and protect all existing utilities from damage during construction.

The seal appearing on this document was authorized on July 22, 2016 by Michael Cummings, P.E. Tx. No. 41566. Alteration of a sealed document without proper notification to the responsible engineer is an offense under the Texas Engineering Practice Act.



Binkley & Barfield | C&P
 consulting engineers

1801 Gateway Blvd. Suite 101
 Richardson, Texas 75080
 Texas Registration Number F-3185

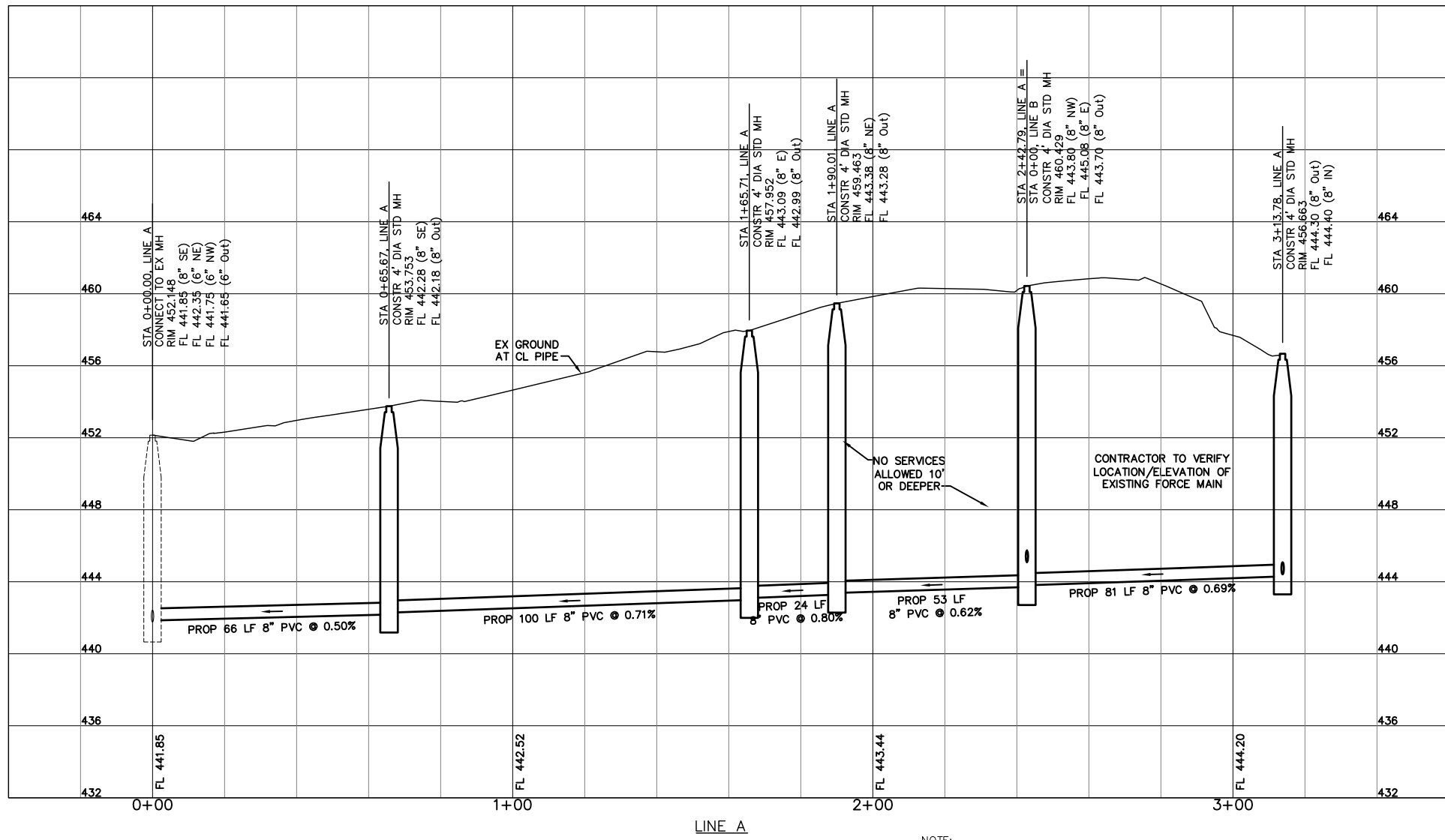
972.644.2800
 Fax 972.644.2817
 www.bbcpi.com

HARBORVIEW DRIVE SANITARY SEWER RELOCATION			
SANITARY SEWER PLAN			
Scale: 1"=10'	Date: Jan 25, 2017	Job No.: BC15026	03

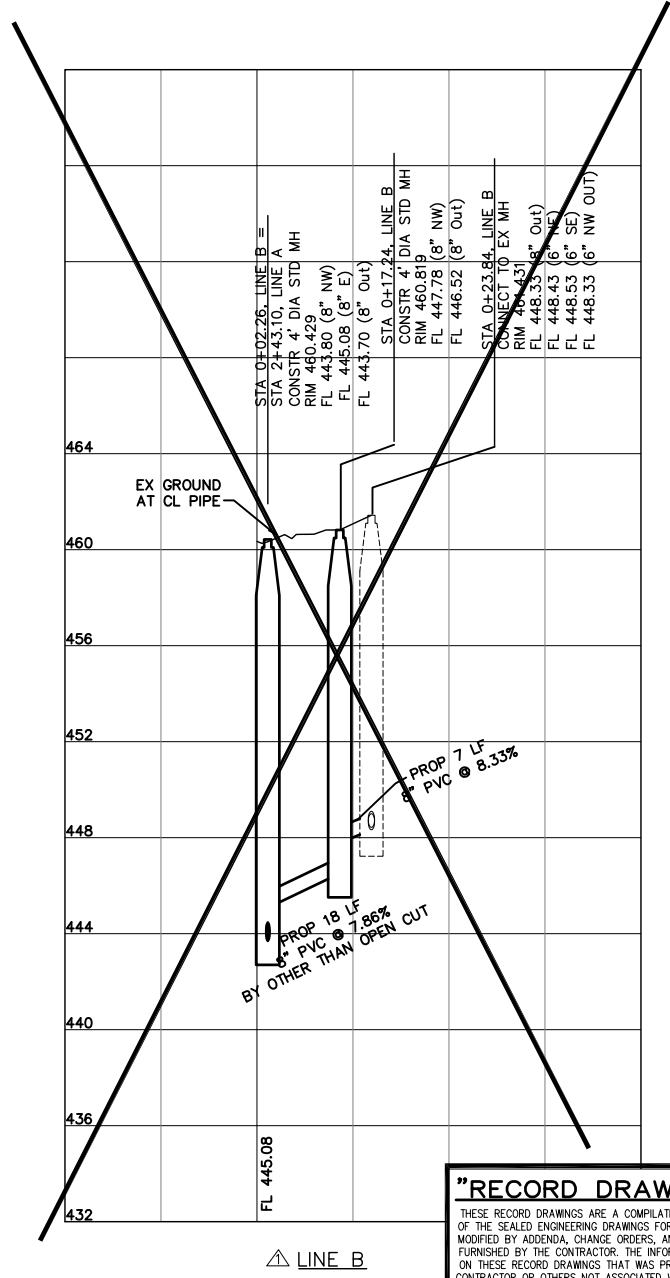
N:\BC15026 (Roadway San Sewer)\05 CAD Files\BC15026\MS.dwg - SEWER PLAN Plotted Jan 25, 2017 at 7:52am by bsylwester | Last Saved by: bsylwester

Rev	Description	Date
1	RE-ALIGN SAN SEWER LINE A, B & FM PER CITY	7/22/16

N:\BC15026 (Roadway San Sewer)\05 CAD Files\BC15026MS.dwg -SEWER PROFILE Plotted Jan 25, 2017 at 7:51am by bsj/wester | Last Saved by: bsj/wester



NOTE:
FLOW LINES CALCULATED.



"RECORD DRAWINGS"
THESE RECORD DRAWINGS ARE A COMPILATION OF A COPY OF THE SEALED ENGINEERING DRAWINGS FOR THIS PROJECT, MODIFIED BY ADDENDA, CHANGE ORDERS, AND INFORMATION FURNISHED BY THE CONTRACTOR. THE INFORMATION SHOWN ON THESE RECORD DRAWINGS THAT WAS PROVIDED BY THE CONTRACTOR OR OTHERS NOT ASSOCIATED WITH THE DESIGN ENGINEER CANNOT BE VERIFIED FOR ACCURACY OR COMPLETENESS. THE ORIGINAL SEALED DRAWINGS ARE ON FILE AT THE OFFICES OF BINKLEY & BARFIELD, INC.

NOTE:
THE ORIGINAL ENGINEERING FIRM BINKLEY & BARFIELD-C&P, INC. TBPE F-3185 DISSOLVED ON JULY 1, 2016 AND MERGED INTO BINKLEY & BARFIELD, INC. TBPE F-257.

CAUTION EXISTING UTILITIES !!!

Existing utilities and underground facilities indicated on these plans have been located from reference information. It shall be the responsibility of the contractor to verify both horizontally and vertically the location of all existing utilities and underground facilities prior to construction, to take the necessary precautions in order to protect all facilities encountered. The contractor shall preserve and protect all existing utilities from damage during construction.

The seal appearing on this document was authorized on July 22, 2016 by Michael Cummings, P.E. Tx. No. 41566. Alteration of a sealed document without proper notification to the responsible engineer is an offense under the Texas Engineering Practice Act.



1801 Gateway Blvd. Suite 101 Richardson, Texas 75080
972.644.2800 Fax 972.644.2817 www.bbcpi.com Texas Registration Number F-3185

**HARBORVIEW DRIVE
SANITARY SEWER RELOCATION**

LINE A & LINE B PROFILES

Scale: 1"=20' H 1"=4' V	Date: Jan 25, 2017	Job No.: BC15026	04
-------------------------------	-----------------------	---------------------	-----------

Rev	Description	Date
1	RE ALIGN SAN SEWER LINE A, B & FM PER CITY	7/22/16