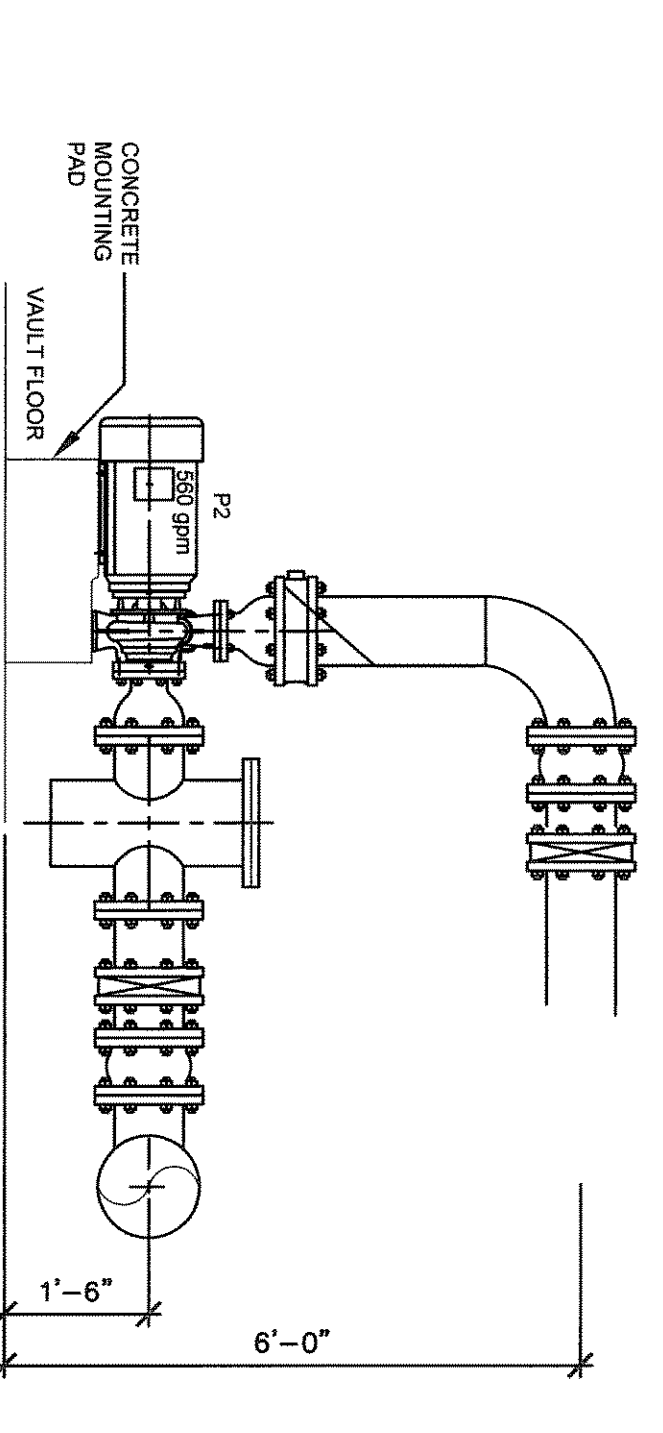
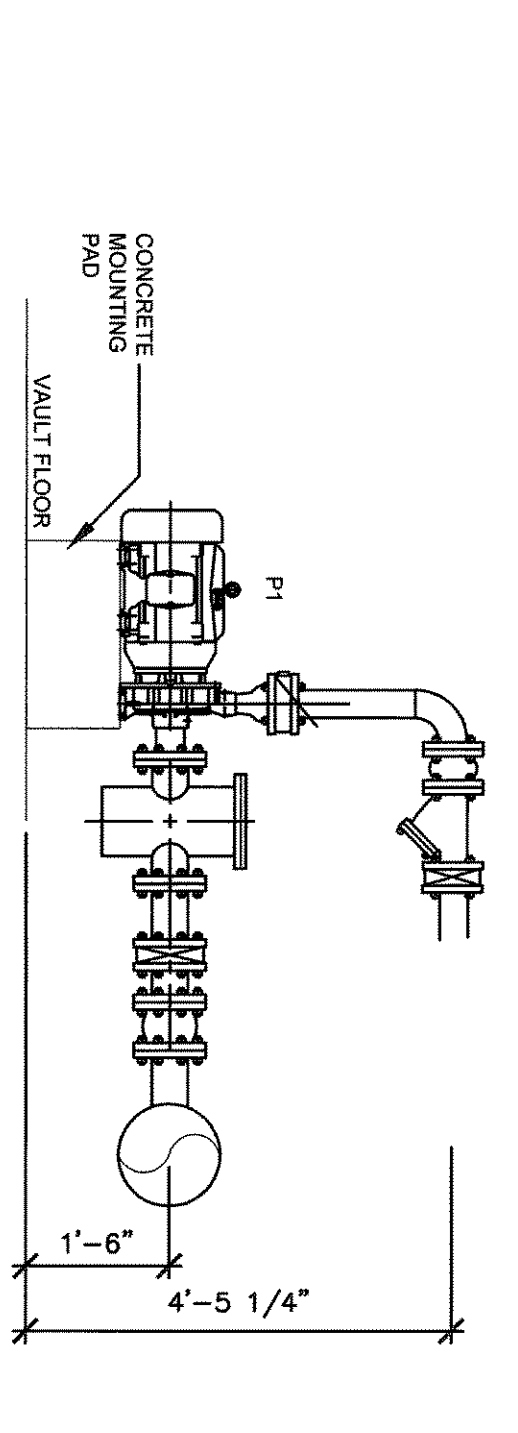


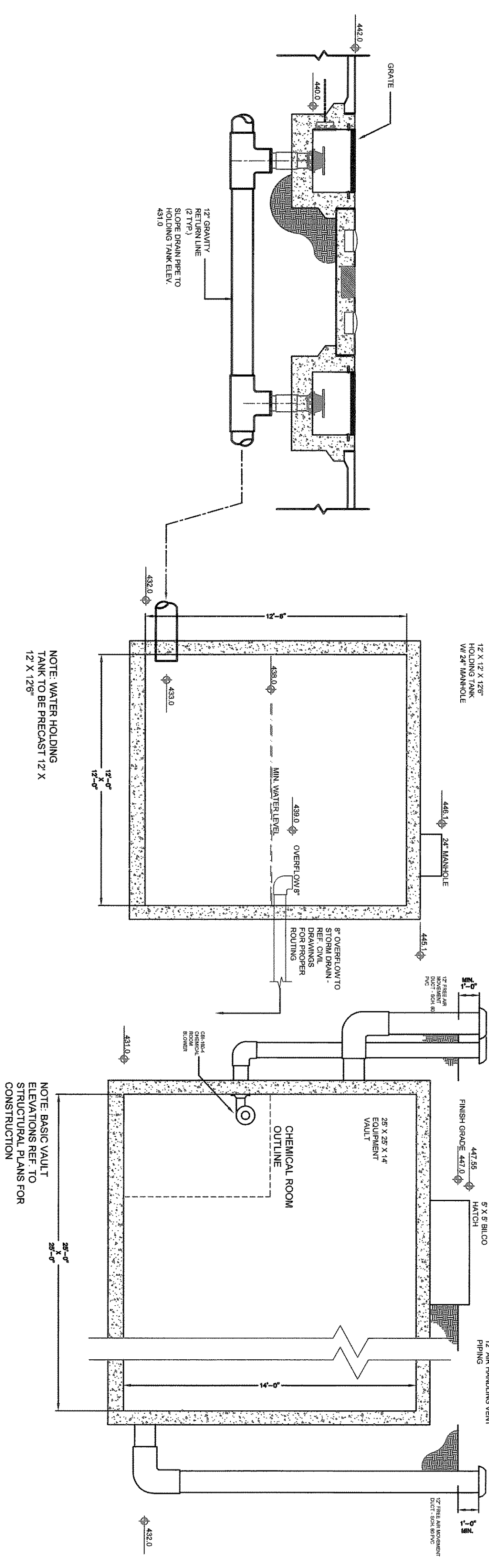
F PLAZA FEATURE P3, P4, P5 - PUMP ELEVATIONS
ELEVATION
SCALE: 1/2" = 1'-0"



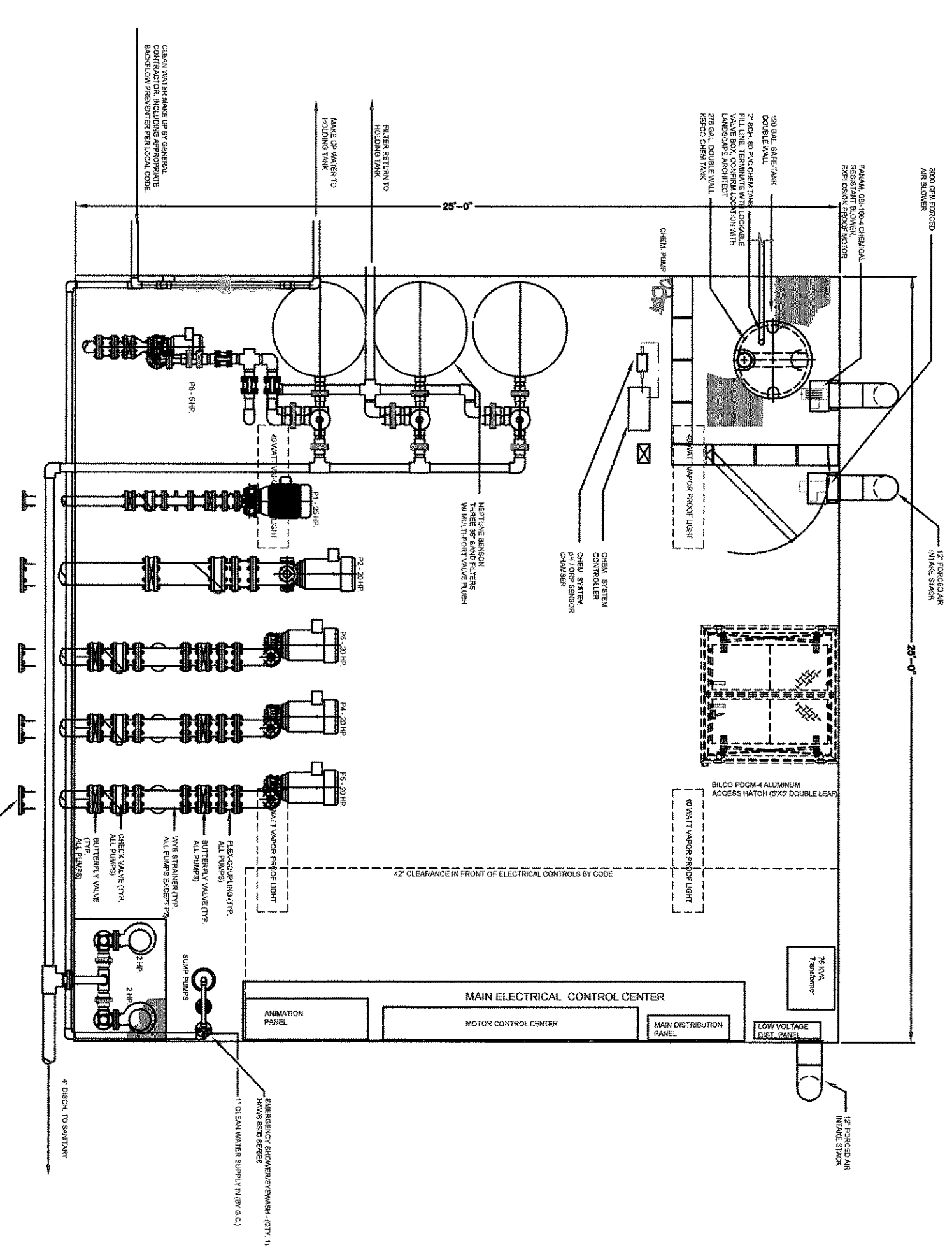
E PLAZA FEATURE P2 - PUMP ELEVATIONS
ELEVATION
SCALE: 1/2" = 1'-0"



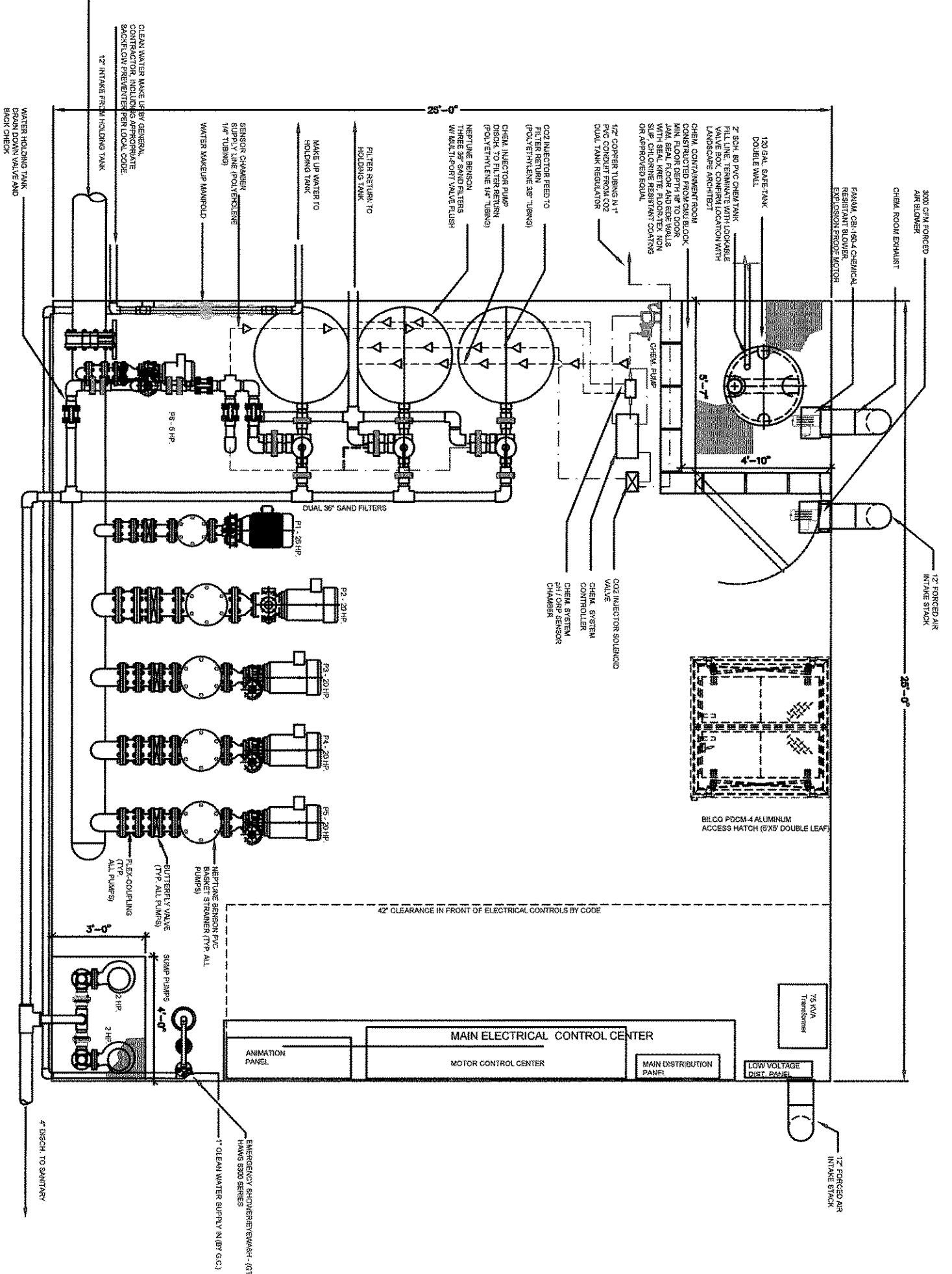
D PLAZA FEATURE P1 - PUMP ELEVATIONS
ELEVATION
SCALE: 1/2" = 1'-0"



C PLAZA FEATURE P6 - PUMP ELEVATIONS
ELEVATION
SCALE: 1/2" = 1'-0"

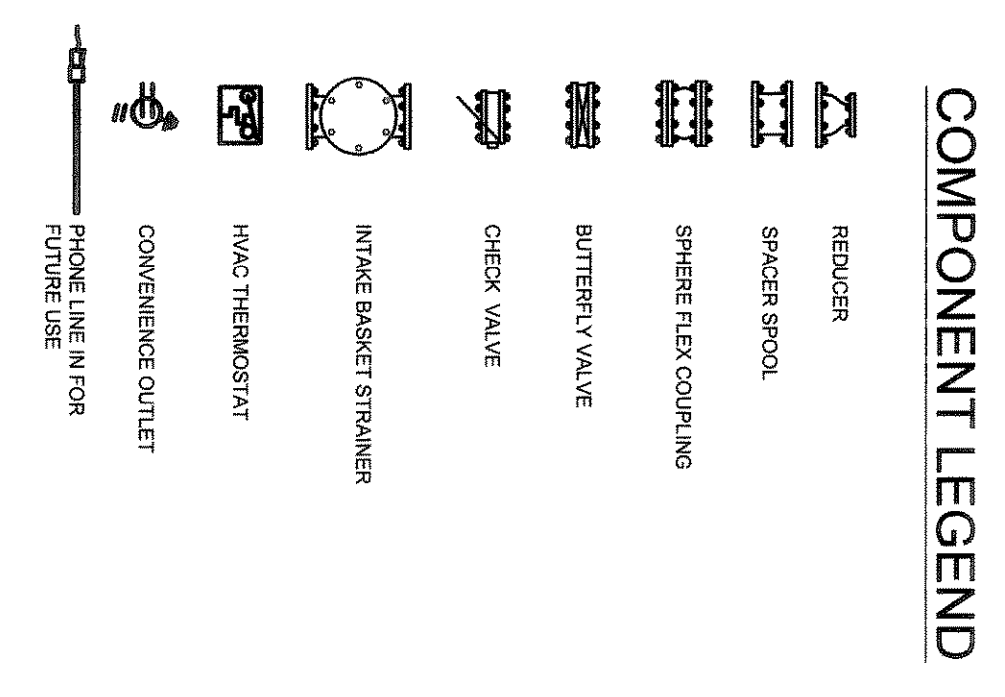


A PLAZA FEATURE VAULT DISCHARGE PIPING PLAN
SECTION
SCALE: 1/4" = 1'-0"

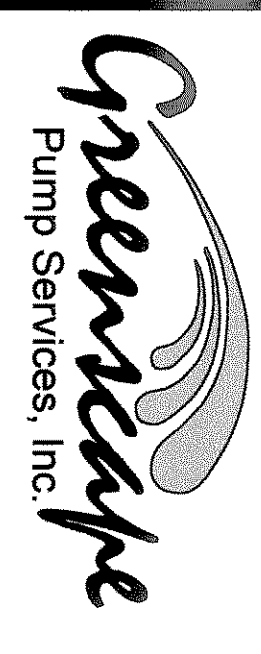


B PLAZA FEATURE VAULT SUCTION PIPING PLAN
SECTION
SCALE: 1/4" = 1'-0"

- NOTES:
- 1) ALL PIPING IN VAULT TO BE SCH. 40 STEEL WITH INDUSTRIAL LIGHT GRAY INDUSTRIAL ENAMEL PRIMER AND EXTERIOR COATING UNLESS OTHERWISE STATED. PIPING TO PROTRUDE THROUGH VAULT WALL WITH 150 LB. ANSI FLANGE CONNECTIONS.
 - 2) EXCEPTION: ALL FILTER PLUMBING TO BE SCH. 80 PVC.
 - 3) ALL PLUMBING BETWEEN VAULT AND FOUNTAIN BASINS TO BE SCH. 80 PVC CLEANED, PRIMED, GALLED AND TESTED IN ACCORDANCE WITH LOCAL CODES.
 - 4) WATER FEATURE SUB CONTRACTOR TO PROVIDE A MINIMUM OF TWO GFCI DUPLEX RECEPTACLES FOR CONVENIENCE OUTLETS.
 - 5) EQUIPMENT VAULT TO INCLUDE AN OSHA APPROVED ACCESS LADDER OR STEPS WITH SAFETY UP POST.
 - 6) WATER FEATURE SUB CONTRACTOR TO PROVIDE INSTALLATION DETAILS OF EQUIPMENT PRIOR TO CONSTRUCTION INCLUDING ELEVATION DETAILS OF EQUIPMENT AND CONNECTIONS BETWEEN ELECTRICAL WIRING OF ALL DEVICES IN VAULT ACCORDING TO LOCAL CODES.
 - 7) WATER FEATURE SUB CONTRACTOR TO PROVIDE ELECTRICAL VALVE ON ALL PIPING, FILTERS, AND STRAINERS FOR DRAINING - REF. PIPING LINE DIAGRAMS.
 - 8) WATER FEATURE SUB CONTRACTOR TO PROVIDE DUAL TANK CO2 REGULATOR, RECAL DUAL CYLINDER SCALE DISTRIBUTED BY REFRONICS, INC. 800-428-3254.
 - 9) WATER FEATURE SUB CONTRACTOR TO PROVIDE ACCESS AND EXCHANGE BY THE LANDSCAPE ARCHITECT FOR ACCESS AND EXCHANGE.

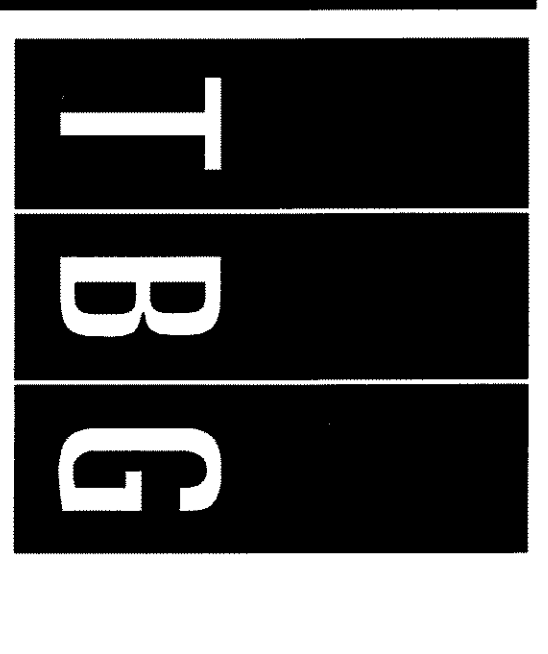


THE HARBOR ROCKWALL, TEXAS



Headquarters
1425 N. Highway 1198
Carrollton, Texas 75006
Ph: 972-448-0037 Fax: 972-448-0313

PARTNERS
Landscope Architects • Planners
302 North Market, Suite 450
Dallas, Texas 75202
214/714-0757 Fax: 214/714-6785
Austin • Dallas • Houston • McAllen



NO.	REVISION/DESCRIPTION	DATE
1	POST-BID ADDENDUM	01/17/05
2	AS BUILT	11/10/05

SHEET TITLE
**PLAZA
EQUIPMENT VAULT
PLAN**

JOB NO. 4930
DATE: JULY 12, 2005
DRAWN BY: GIBBERSON, CAROL L/W05
CHECKED BY: LW
SHEET NUMBER
LW.12