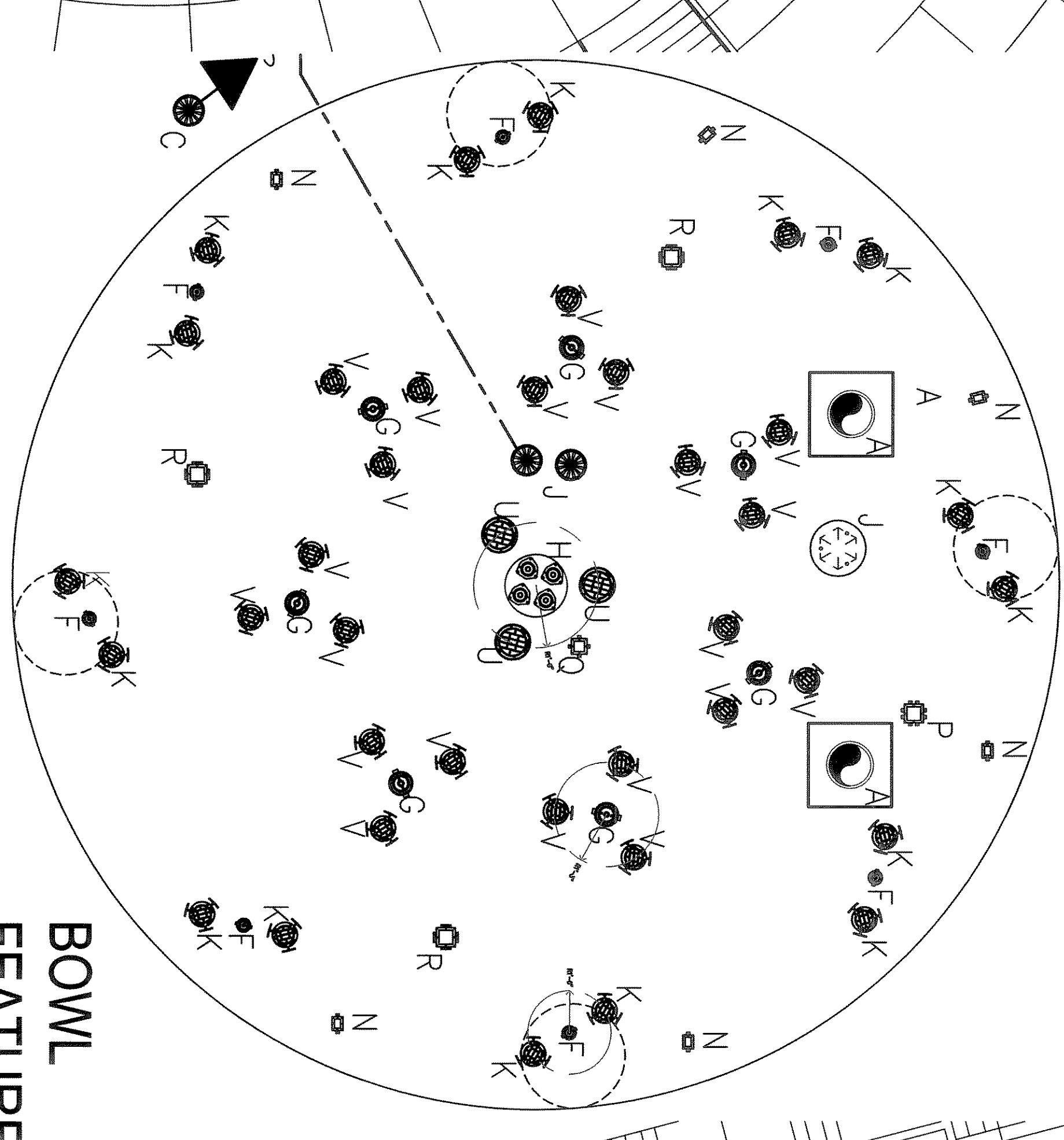


ITEM	ITEM DESCRIPTION	QUANTITY
A	1/2" SCH. 80 PVC 1/2" WATERSTOP PENETRATION AND 2"x2'x4" GUNNER FLAT	2
B	15000' SECTION DRAIN	6
C	15000' SECTION DRAIN	3
D	57500' 1/2" DIA. 1/2" ELBOW	14
E	15000' 1/2" DIA. 1/2" ELBOW	8
F	15000' 1/2" DIA. 1/2" ELBOW	8
G	15000' 1/2" DIA. 1/2" ELBOW	8
H	15000' 1/2" DIA. 1/2" ELBOW	8
I	15000' 1/2" DIA. 1/2" ELBOW	8
J	15000' 1/2" DIA. 1/2" ELBOW	8
K	15000' 1/2" DIA. 1/2" ELBOW	8
L	15000' 1/2" DIA. 1/2" ELBOW	8
M	15000' 1/2" DIA. 1/2" ELBOW	8
N	15000' 1/2" DIA. 1/2" ELBOW	8
O	15000' 1/2" DIA. 1/2" ELBOW	8
P	15000' 1/2" DIA. 1/2" ELBOW	8
Q	15000' 1/2" DIA. 1/2" ELBOW	8
R	15000' 1/2" DIA. 1/2" ELBOW	8
S	15000' 1/2" DIA. 1/2" ELBOW	8
T	15000' 1/2" DIA. 1/2" ELBOW	8
U	15000' 1/2" DIA. 1/2" ELBOW	8
V	15000' 1/2" DIA. 1/2" ELBOW	8
W	15000' 1/2" DIA. 1/2" ELBOW	8
X	15000' 1/2" DIA. 1/2" ELBOW	8
Y	15000' 1/2" DIA. 1/2" ELBOW	8
Z	15000' 1/2" DIA. 1/2" ELBOW	8
AA	15000' 1/2" DIA. 1/2" ELBOW	8
AB	15000' 1/2" DIA. 1/2" ELBOW	8

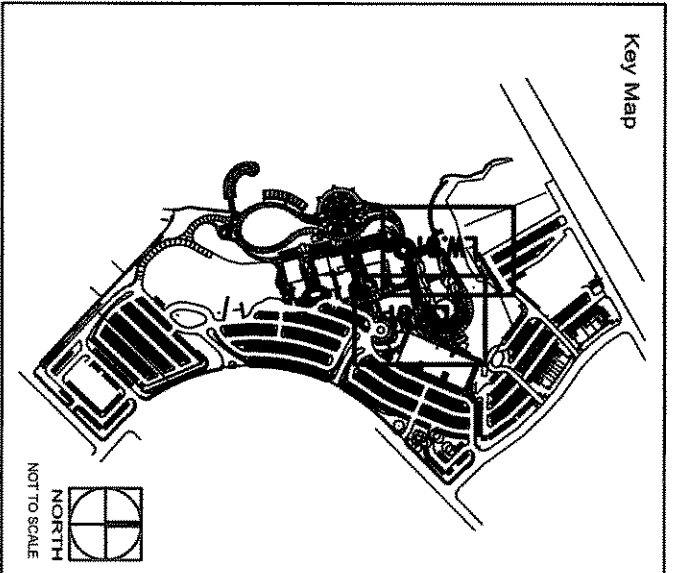
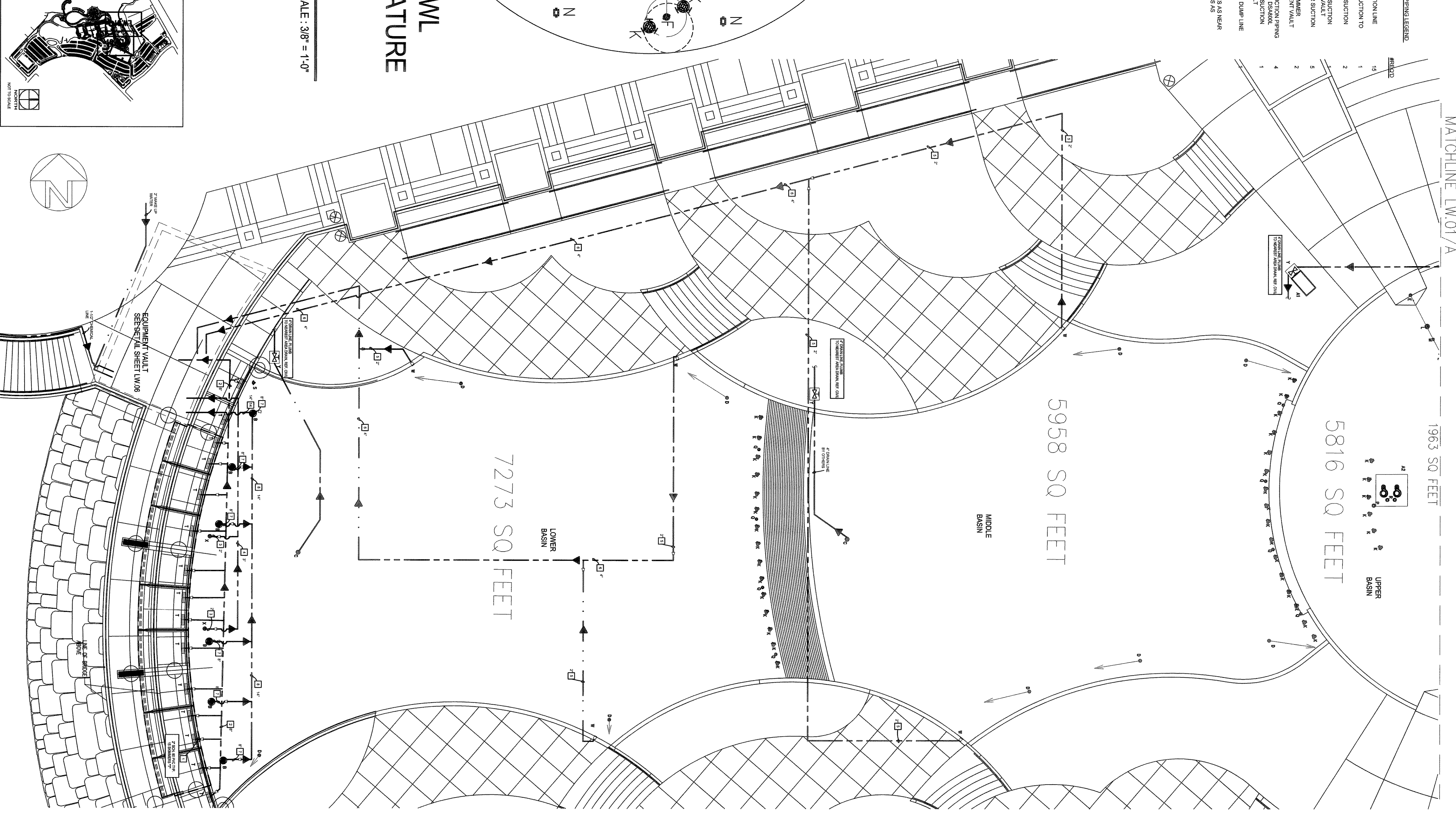
NOTE:  
 1) PIPING AND ELECTRICAL LAYOUTS ARE DIAGRAMATIC ONLY. FOUNDATION SUB CONTRACTOR TO CORRELATE WITH CIVIL AND UTILITIES FOR MOST EFFICIENT ROUTING AND TO MAINTAIN AS FEW ELBOWS AND DIRECTIONAL CHANGES AS POSSIBLE.  
 2) REFERENCE PIPE RUN RIGOR DIAGRAM SHEET LW.05B FOR ALL PIPE SIZES. INSTALL REDUCERS IN VALVE AND BASINS AS CLOSE AS POSSIBLE TO ALL EQUIPMENT AND FITTINGS.  
 3) REFERENCE ELECTRICAL PLANS FOR SPECIFICATIONS AND LOCATIONS OF ELECTRICAL PULL BOXES.

ITEM	ITEM DESCRIPTION
1	SCH. 80 PVC SWIMMER SECTION LINE
2	SCH. 80 PVC MAIN FLOOR SECTION
3	SCH. 80 PVC MAIN FLOOR SECTION
4	SCH. 80 PVC MAIN FLOOR SECTION
5	SCH. 80 PVC MAIN FLOOR SECTION
6	SCH. 80 PVC MAIN FLOOR SECTION
7	SCH. 80 PVC MAIN FLOOR SECTION
8	SCH. 80 PVC MAIN FLOOR SECTION
9	SCH. 80 PVC MAIN FLOOR SECTION
10	SCH. 80 PVC MAIN FLOOR SECTION
11	SCH. 80 PVC MAIN FLOOR SECTION
12	SCH. 80 PVC MAIN FLOOR SECTION
13	SCH. 80 PVC MAIN FLOOR SECTION
14	SCH. 80 PVC MAIN FLOOR SECTION
15	SCH. 80 PVC MAIN FLOOR SECTION
16	SCH. 80 PVC MAIN FLOOR SECTION
17	SCH. 80 PVC MAIN FLOOR SECTION
18	SCH. 80 PVC MAIN FLOOR SECTION
19	SCH. 80 PVC MAIN FLOOR SECTION
20	SCH. 80 PVC MAIN FLOOR SECTION
21	SCH. 80 PVC MAIN FLOOR SECTION
22	SCH. 80 PVC MAIN FLOOR SECTION
23	SCH. 80 PVC MAIN FLOOR SECTION
24	SCH. 80 PVC MAIN FLOOR SECTION



PIPE SYSTEM FOR FITTING, PIPING, AND VALVES SHALL BE THE RESPONSIBILITY OF THE CONTRACTOR. ALL PIPING AND CONNECTIONS SHALL BE IN ACCORDANCE WITH THE CITY OF ROCKWALL SPECIFICATIONS FOR UNDERWATER CABLE.

HYDRAULIC PENETRATIONS:  
 ELECTRICAL CONDUIT:  
 UNDERWATER CABLE:



**T B G**  
PARTNERS  
Landscape Architects - Planners  
302 North Market, Suite 450  
Dallas, Texas 75202  
214/744-0757 Fax: 214/744-6785  
Austin - Dallas - Houston - McAllen

**Greenwave**  
Pump Services, Inc.  
DESIGN • CONSULTING • CONTRACTING • SALES • SERVICE  
Headquarters:  
1425 Woodloch, Suite 102  
Cameron, Texas 77995  
Ph: 972-449-0593 Fax: 972-449-0513

**THE HARBOR**  
ROCKWALL, TEXAS

NO.	ISSUE/REVISIONS	DATE
1	ISSUE	01/17/23
2	AS BUILT	11/16/23

SHEET TITLE  
LAKE SIDE SUCTION PIPE PLAN  
JOB NO. 4930  
DATE 12/20/22  
DRAWN BY: GDR  
CHECKED BY: JTB  
FILE: 4930-THE HARBOR-AS-BUILT-110706  
SHEET NUMBER

**LW.01**