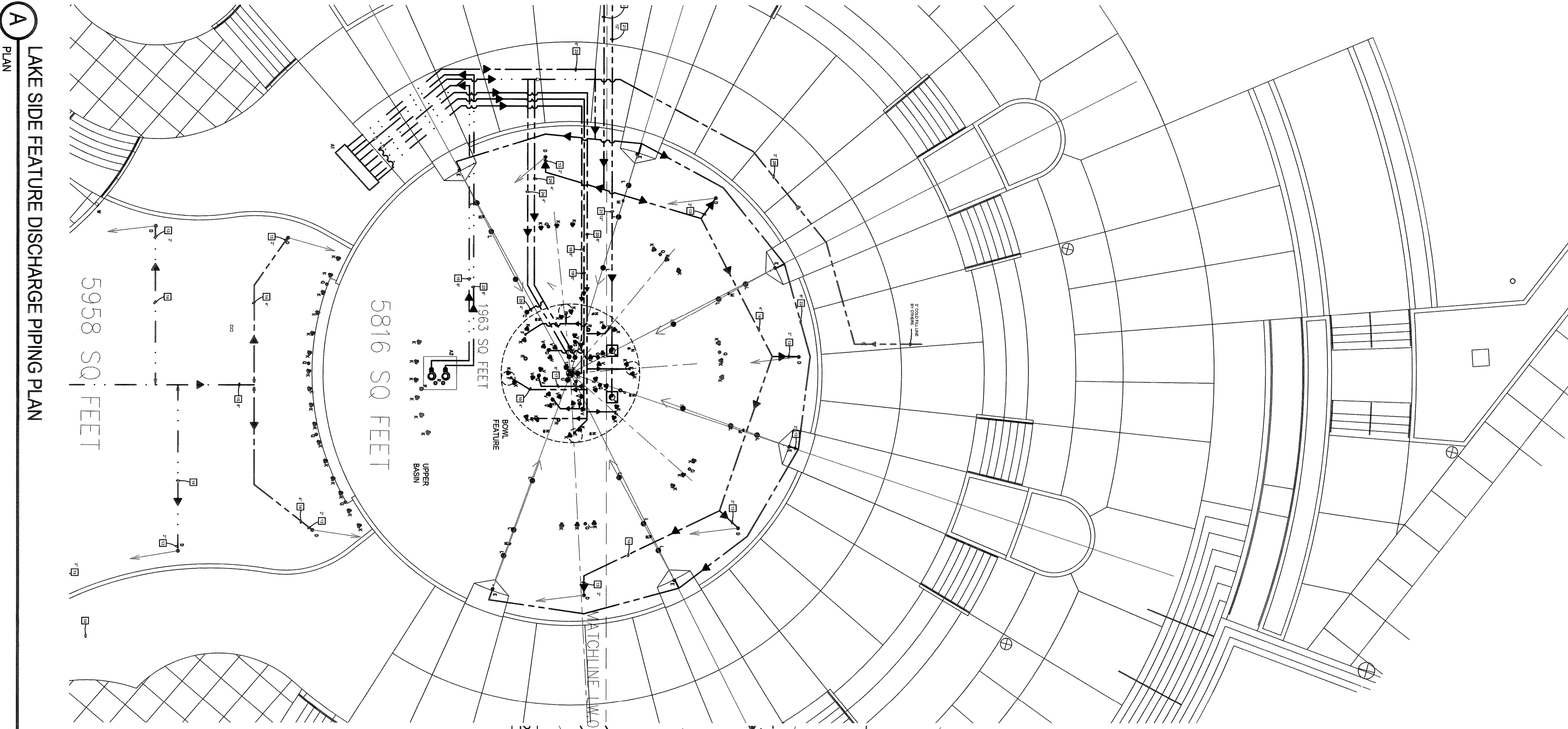


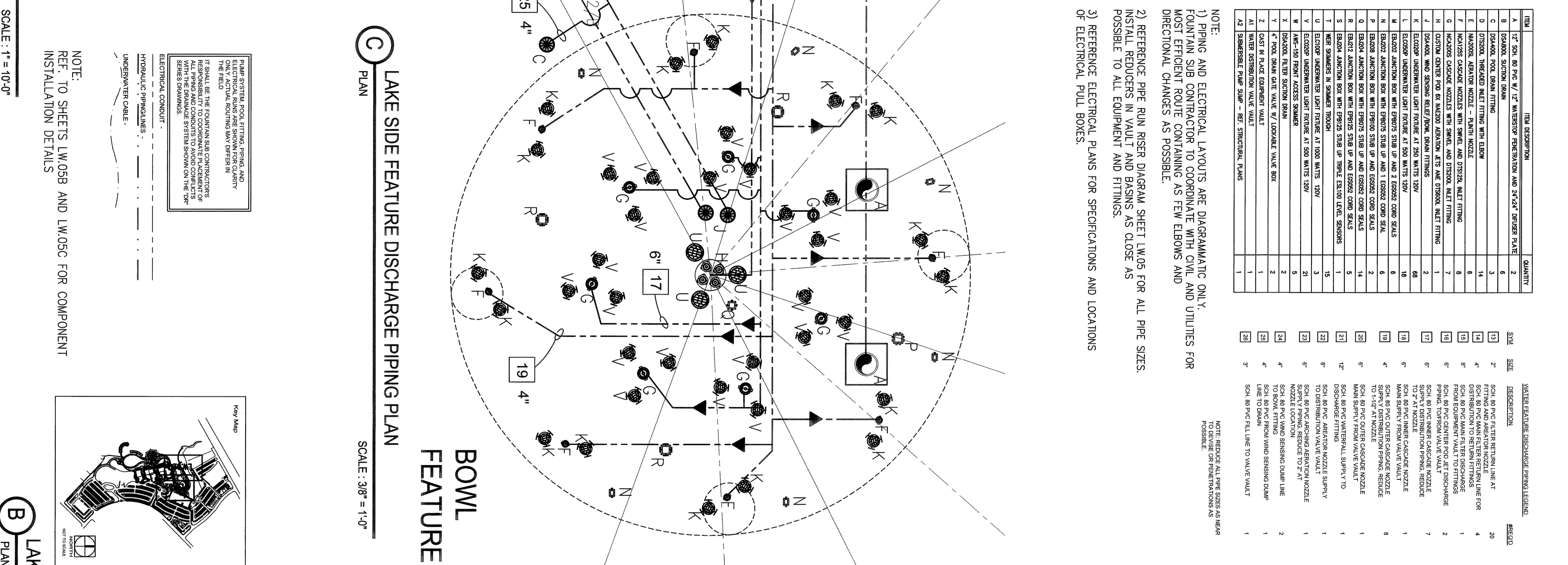
ITEM	ITEM DESCRIPTION	QUANTITY
1	12" SCH 40 PVC 45' W/ 2" WATERSTOP CONNECTION AND 30"x4" BRASS FLANGE	6
2	6" SCH 40 PVC 100' W/ 2" WATERSTOP CONNECTION AND 30"x4" BRASS FLANGE	6
3	6" SCH 40 PVC 100' W/ 2" WATERSTOP CONNECTION AND 30"x4" BRASS FLANGE	6
4	6" SCH 40 PVC 100' W/ 2" WATERSTOP CONNECTION AND 30"x4" BRASS FLANGE	6
5	6" SCH 40 PVC 100' W/ 2" WATERSTOP CONNECTION AND 30"x4" BRASS FLANGE	6
6	6" SCH 40 PVC 100' W/ 2" WATERSTOP CONNECTION AND 30"x4" BRASS FLANGE	6
7	6" SCH 40 PVC 100' W/ 2" WATERSTOP CONNECTION AND 30"x4" BRASS FLANGE	6
8	6" SCH 40 PVC 100' W/ 2" WATERSTOP CONNECTION AND 30"x4" BRASS FLANGE	6
9	6" SCH 40 PVC 100' W/ 2" WATERSTOP CONNECTION AND 30"x4" BRASS FLANGE	6
10	6" SCH 40 PVC 100' W/ 2" WATERSTOP CONNECTION AND 30"x4" BRASS FLANGE	6
11	6" SCH 40 PVC 100' W/ 2" WATERSTOP CONNECTION AND 30"x4" BRASS FLANGE	6
12	6" SCH 40 PVC 100' W/ 2" WATERSTOP CONNECTION AND 30"x4" BRASS FLANGE	6
13	6" SCH 40 PVC 100' W/ 2" WATERSTOP CONNECTION AND 30"x4" BRASS FLANGE	6
14	6" SCH 40 PVC 100' W/ 2" WATERSTOP CONNECTION AND 30"x4" BRASS FLANGE	6
15	6" SCH 40 PVC 100' W/ 2" WATERSTOP CONNECTION AND 30"x4" BRASS FLANGE	6
16	6" SCH 40 PVC 100' W/ 2" WATERSTOP CONNECTION AND 30"x4" BRASS FLANGE	6
17	6" SCH 40 PVC 100' W/ 2" WATERSTOP CONNECTION AND 30"x4" BRASS FLANGE	6
18	6" SCH 40 PVC 100' W/ 2" WATERSTOP CONNECTION AND 30"x4" BRASS FLANGE	6
19	6" SCH 40 PVC 100' W/ 2" WATERSTOP CONNECTION AND 30"x4" BRASS FLANGE	6
20	6" SCH 40 PVC 100' W/ 2" WATERSTOP CONNECTION AND 30"x4" BRASS FLANGE	6
21	6" SCH 40 PVC 100' W/ 2" WATERSTOP CONNECTION AND 30"x4" BRASS FLANGE	6
22	6" SCH 40 PVC 100' W/ 2" WATERSTOP CONNECTION AND 30"x4" BRASS FLANGE	6
23	6" SCH 40 PVC 100' W/ 2" WATERSTOP CONNECTION AND 30"x4" BRASS FLANGE	6
24	6" SCH 40 PVC 100' W/ 2" WATERSTOP CONNECTION AND 30"x4" BRASS FLANGE	6
25	6" SCH 40 PVC 100' W/ 2" WATERSTOP CONNECTION AND 30"x4" BRASS FLANGE	6
26	6" SCH 40 PVC 100' W/ 2" WATERSTOP CONNECTION AND 30"x4" BRASS FLANGE	6
27	6" SCH 40 PVC 100' W/ 2" WATERSTOP CONNECTION AND 30"x4" BRASS FLANGE	6
28	6" SCH 40 PVC 100' W/ 2" WATERSTOP CONNECTION AND 30"x4" BRASS FLANGE	6
29	6" SCH 40 PVC 100' W/ 2" WATERSTOP CONNECTION AND 30"x4" BRASS FLANGE	6
30	6" SCH 40 PVC 100' W/ 2" WATERSTOP CONNECTION AND 30"x4" BRASS FLANGE	6
31	6" SCH 40 PVC 100' W/ 2" WATERSTOP CONNECTION AND 30"x4" BRASS FLANGE	6
32	6" SCH 40 PVC 100' W/ 2" WATERSTOP CONNECTION AND 30"x4" BRASS FLANGE	6
33	6" SCH 40 PVC 100' W/ 2" WATERSTOP CONNECTION AND 30"x4" BRASS FLANGE	6
34	6" SCH 40 PVC 100' W/ 2" WATERSTOP CONNECTION AND 30"x4" BRASS FLANGE	6
35	6" SCH 40 PVC 100' W/ 2" WATERSTOP CONNECTION AND 30"x4" BRASS FLANGE	6
36	6" SCH 40 PVC 100' W/ 2" WATERSTOP CONNECTION AND 30"x4" BRASS FLANGE	6
37	6" SCH 40 PVC 100' W/ 2" WATERSTOP CONNECTION AND 30"x4" BRASS FLANGE	6
38	6" SCH 40 PVC 100' W/ 2" WATERSTOP CONNECTION AND 30"x4" BRASS FLANGE	6
39	6" SCH 40 PVC 100' W/ 2" WATERSTOP CONNECTION AND 30"x4" BRASS FLANGE	6
40	6" SCH 40 PVC 100' W/ 2" WATERSTOP CONNECTION AND 30"x4" BRASS FLANGE	6
41	6" SCH 40 PVC 100' W/ 2" WATERSTOP CONNECTION AND 30"x4" BRASS FLANGE	6
42	6" SCH 40 PVC 100' W/ 2" WATERSTOP CONNECTION AND 30"x4" BRASS FLANGE	6

- NOTE:
- 1) PIPING AND ELECTRICAL LAYOUTS ARE DIAGRAMATIC ONLY. FOUNTAIN SUB CONTRACTOR TO COORDINATE WITH CIVIL AND UTILITIES FOR MOST EFFICIENT ROUTE CONTAINING AS FEW ELBOWS AND DIRECTIONAL CHANGES AS POSSIBLE.
 - 2) REFERENCE PIPE RUN RISER DIAGRAM SHEET LW.05 FOR ALL PIPE SIZES. INSTALL REDUCERS IN VAULT AND BASINS AS CLOSE AS POSSIBLE TO ALL EQUIPMENT AND FITTINGS.
 - 3) REFERENCE ELECTRICAL PLANS FOR SPECIFICATIONS AND LOCATIONS OF ELECTRICAL PULL BOXES.

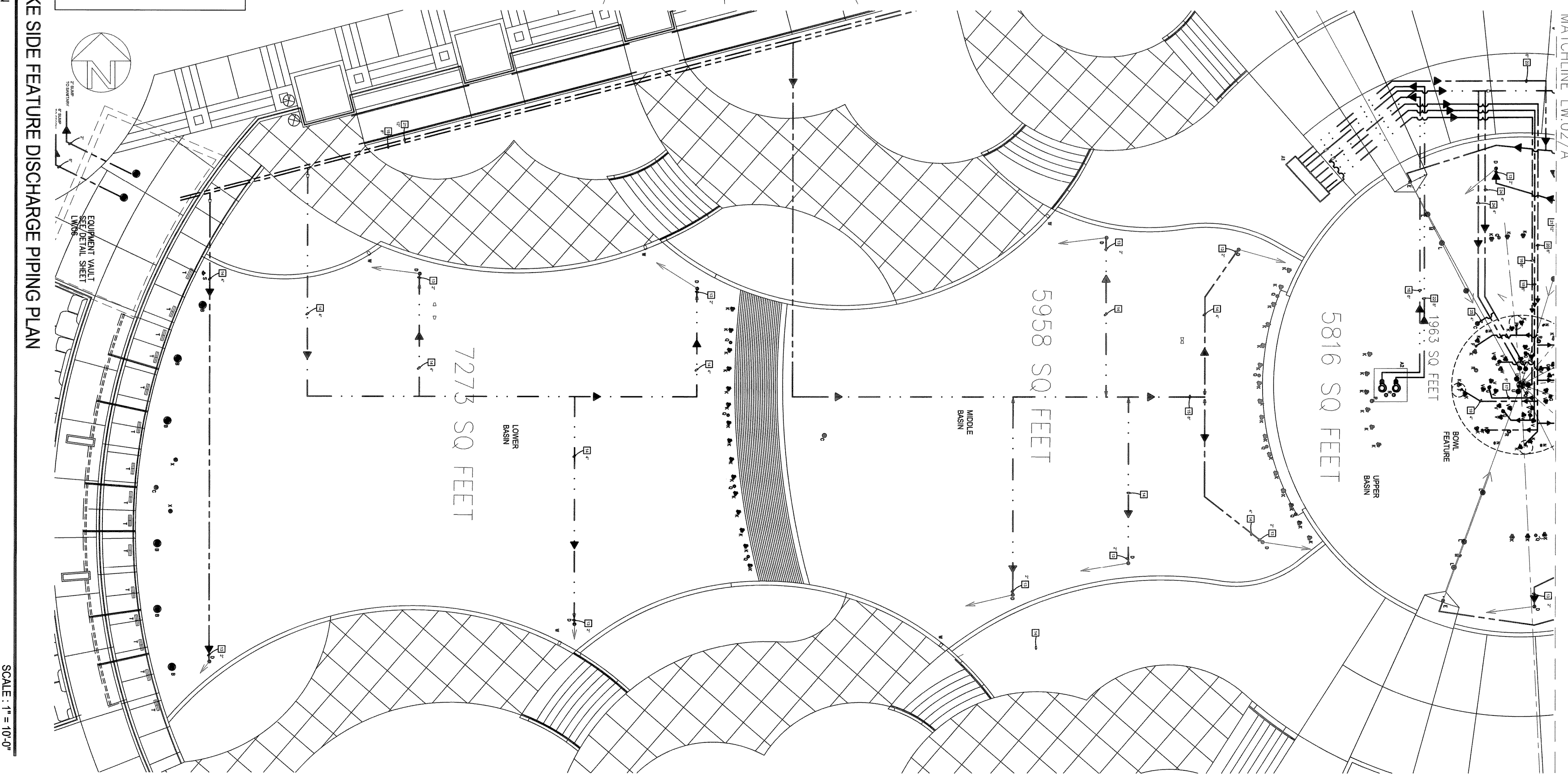
NOTE: REFERENCE ALL PIPE SIZES AS SHOWN POSSIBLE OR ORIENTATIONS AS POSSIBLE.



A PLAN
LAKE SIDE FEATURE DISCHARGE PIPING PLAN
SCALE: 1" = 10'-0"



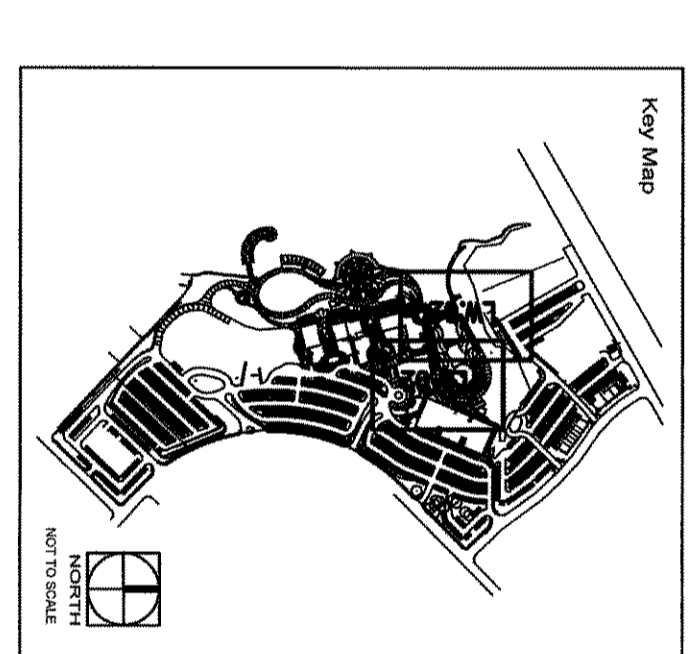
C PLAN
LAKE SIDE FEATURE DISCHARGE PIPING PLAN
SCALE: 3/8" = 1'-0"



B PLAN
LAKE SIDE FEATURE DISCHARGE PIPING PLAN
SCALE: 1" = 10'-0"

PLUMBING SYMBOLS AND ELECTRICAL SYMBOLS ARE SHOWN FOR CLARITY. THE FIELD CONTRACTOR SHALL BE RESPONSIBLE FOR THE FIELD. ALL PIPING AND CONDUITS TO MAINTAIN COMPATIBILITY WITH EXISTING SYSTEMS SHOWN ON THE DRAWING. ELECTRICAL CONDUIT SHALL BE INSTALLED IN CONFORMANCE WITH THE NATIONAL ELECTRICAL CODE (NEC) AND ALL APPLICABLE LOCAL AND STATE CODES. HYDRAULIC PIPING SHALL BE INSTALLED IN CONFORMANCE WITH THE AWWA WATER MOUNTED VALVE STANDARD (M&V).

NOTE: REF TO SHEETS LW.05B AND LW.05C FOR COMPONENT INSTALLATION DETAILS.



T B G
PARTNERS
Landscape Architects · Planners
302 North Market, Suite 450
Dallas, Texas 75202
214/744-0757 Fax: 214/744-6785
Austin · Dallas · Houston · McAllen

Greenwave
Pump Services, Inc.
• DESIGN • CONSULTING • CONTRACTING •
• SALES • SERVICE •
Hindustan
1405 West
Carrollton, Texas 75006
Ph: 972-446-0007 Fax: 972-446-0313

THE HARBOR
ROCKWALL, TEXAS

No.	ISSUE/REVISIONS	DATE
1	POST-BID ADDENDUM	01/17/24
2	AS BUILT	11/16/24

SHEET TITLE
LAKE SIDE DISCHARGE PIP PLAN

JOB NO. 4930
DATE: JULY 12, 2005
DRAWN: SPC/COJ
CHECKED: BPH
FILE: C:\PROJECTS\LAKE SIDE\LAKE SIDE.L107C
SHEET NUMBER
LW.02