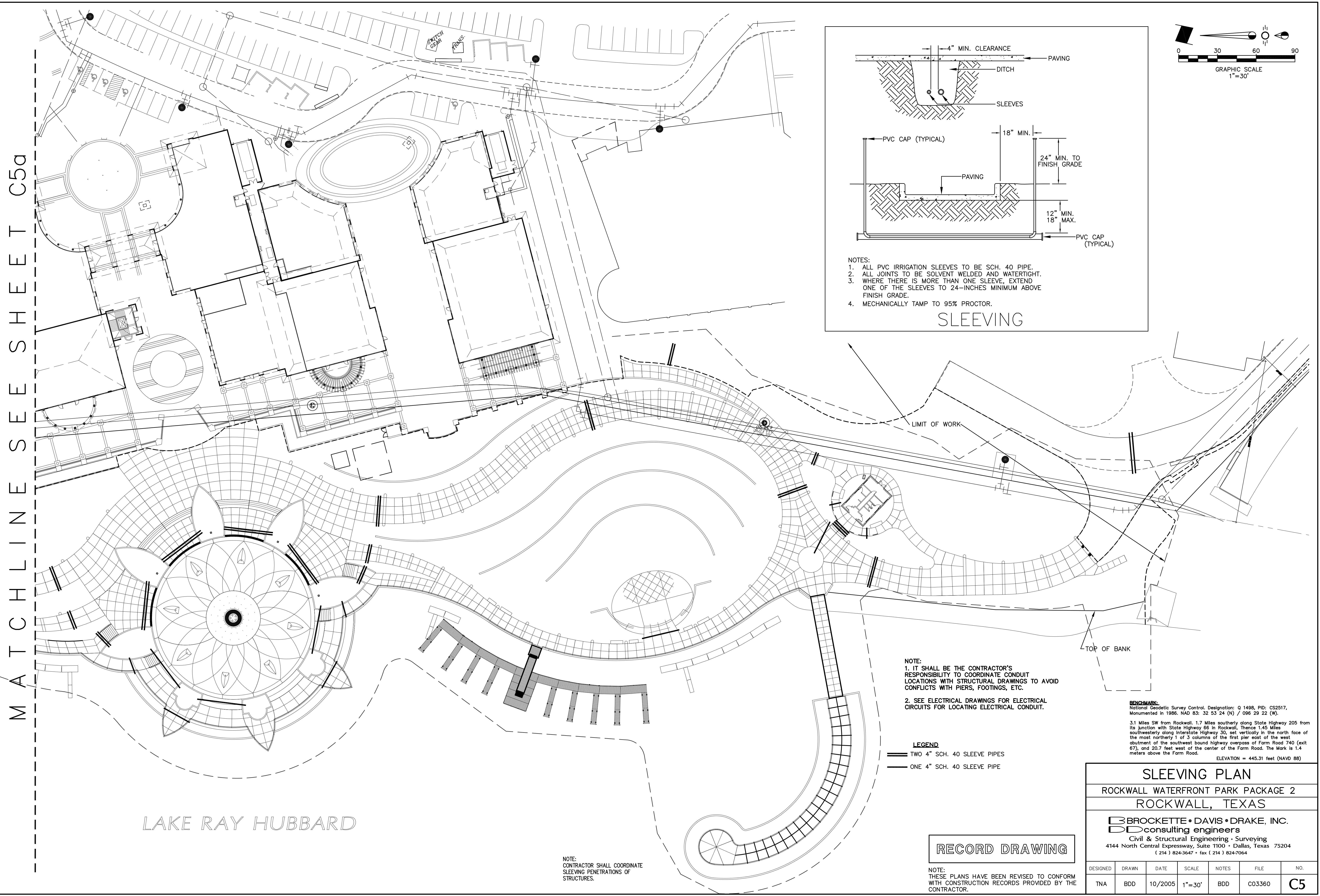


- NOTES:
1. ALL PVC IRRIGATION SLEEVES TO BE SCH. 40 PIPE.
2. ALL JOINTS TO BE SOLVENT WELDED AND WATERTIGHT.
3. WHERE THERE IS MORE THAN ONE SLEEVE, EXTEND ONE OF THE SLEEVES TO 24-INCHES MINIMUM ABOVE FINISH GRADE.
4. MECHANICALLY TAMP TO 95% PROCTOR.

SLEEVING



- NOTE:
1. IT SHALL BE THE CONTRACTOR'S RESPONSIBILITY TO COORDINATE CONDUIT LOCATIONS WITH STRUCTURAL DRAWINGS TO AVOID CONFLICTS WITH PIERS, FOOTINGS, ETC.
2. SEE ELECTRICAL DRAWINGS FOR ELECTRICAL CIRCUITS FOR LOCATING ELECTRICAL CONDUIT.

- LEGEND
— TWO 4" SCH. 40 SLEEVE PIPES
— ONE 4" SCH. 40 SLEEVE PIPE

BENCHMARK:
National Geodetic Survey Control, Designation: 0 1498, PID: CS2517, Monumented in 1986, NAD 83: 32 53 24 (N) / 096 29 22 (W).
3.1 Miles SW from Rockwall, 1.7 Miles southerly along State Highway 205 from its junction with State Highway 66 in Rockwall. Thence 1.45 Miles southwesterly along Interstate Highway 30, set vertically in the north face of the most northerly 1 of 3 columns of the first pier east of the west abutment of the southwest bound highway overpass of Farm Road 740 (exit 67), and 20.7 feet west of the center of the Farm Road. The Mark is 1.4 meters above the Farm Road.
ELEVATION = 445.31 feet (NAVD 88)

SLEEVING PLAN
ROCKWALL WATERFRONT PARK PACKAGE 2
ROCKWALL, TEXAS

BROCKETTE • DAVIS • DRAKE, INC.
consulting engineers
Civil & Structural Engineering • Surveying
4144 North Central Expressway, Suite 1100 • Dallas, Texas 75204
(214) 824-3647 • Fax: (214) 824-3664

DESIGNED	DRAWN	DATE	SCALE	NOTES	FILE	NO.
TNA	BDD	10/2005	1"=30'	BDD	C03360	C5

RECORD DRAWING

NOTE:
THESE PLANS HAVE BEEN REVISED TO CONFORM WITH CONSTRUCTION RECORDS PROVIDED BY THE CONTRACTOR.

NOTE:
CONTRACTOR SHALL COORDINATE SLEEVING PENETRATIONS OF STRUCTURES.

MATCHLINE SEE SHEET C5a

©Copyright 2005 Brockett/Davis/Drake, Inc. All rights reserved. Any modification or use of this drawing without the express written authorization of Brockett/Davis/Drake, Inc. is prohibited.