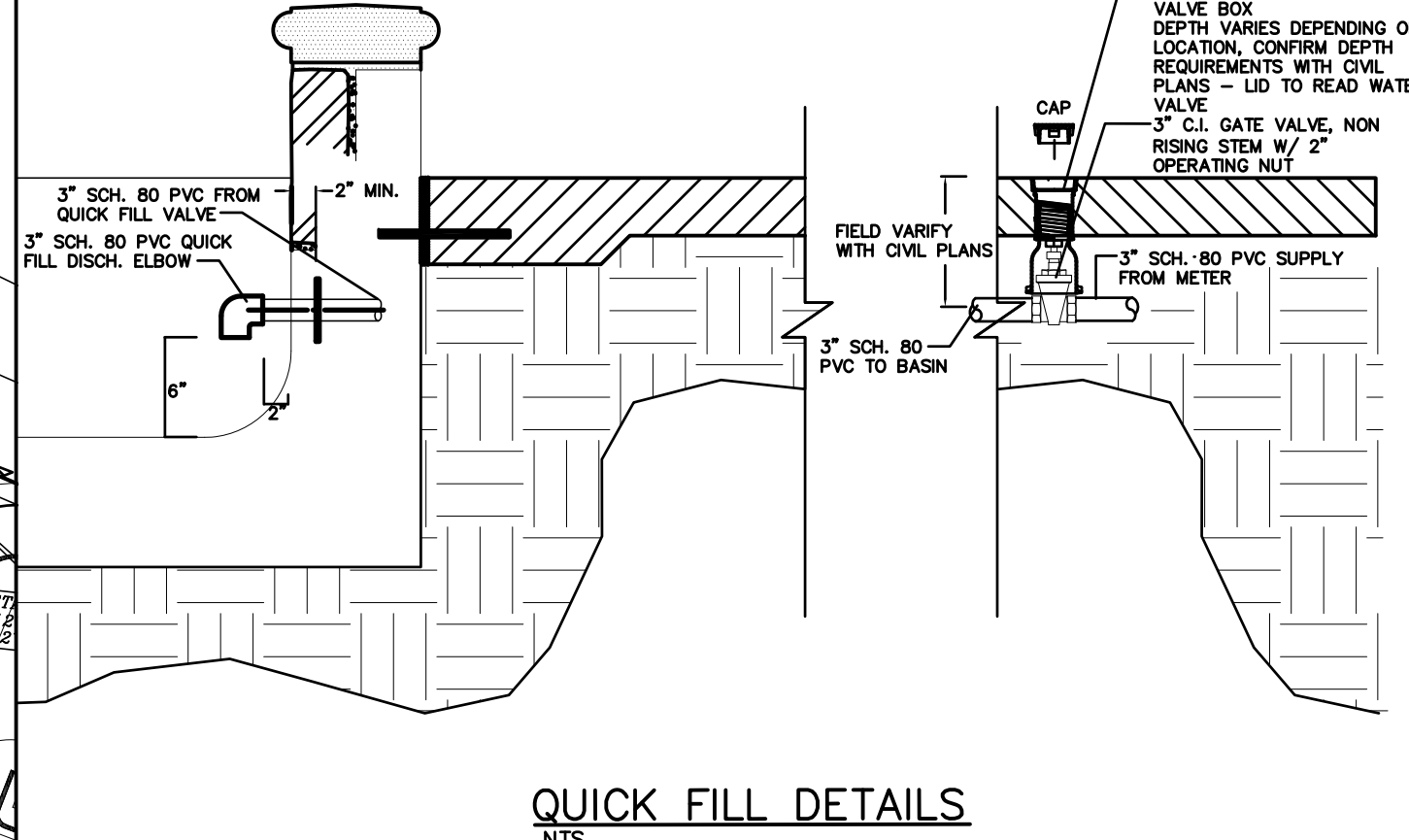
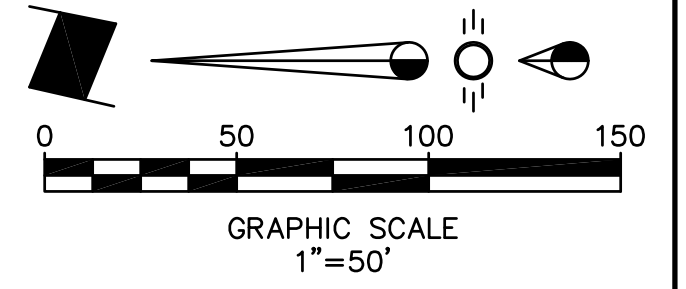
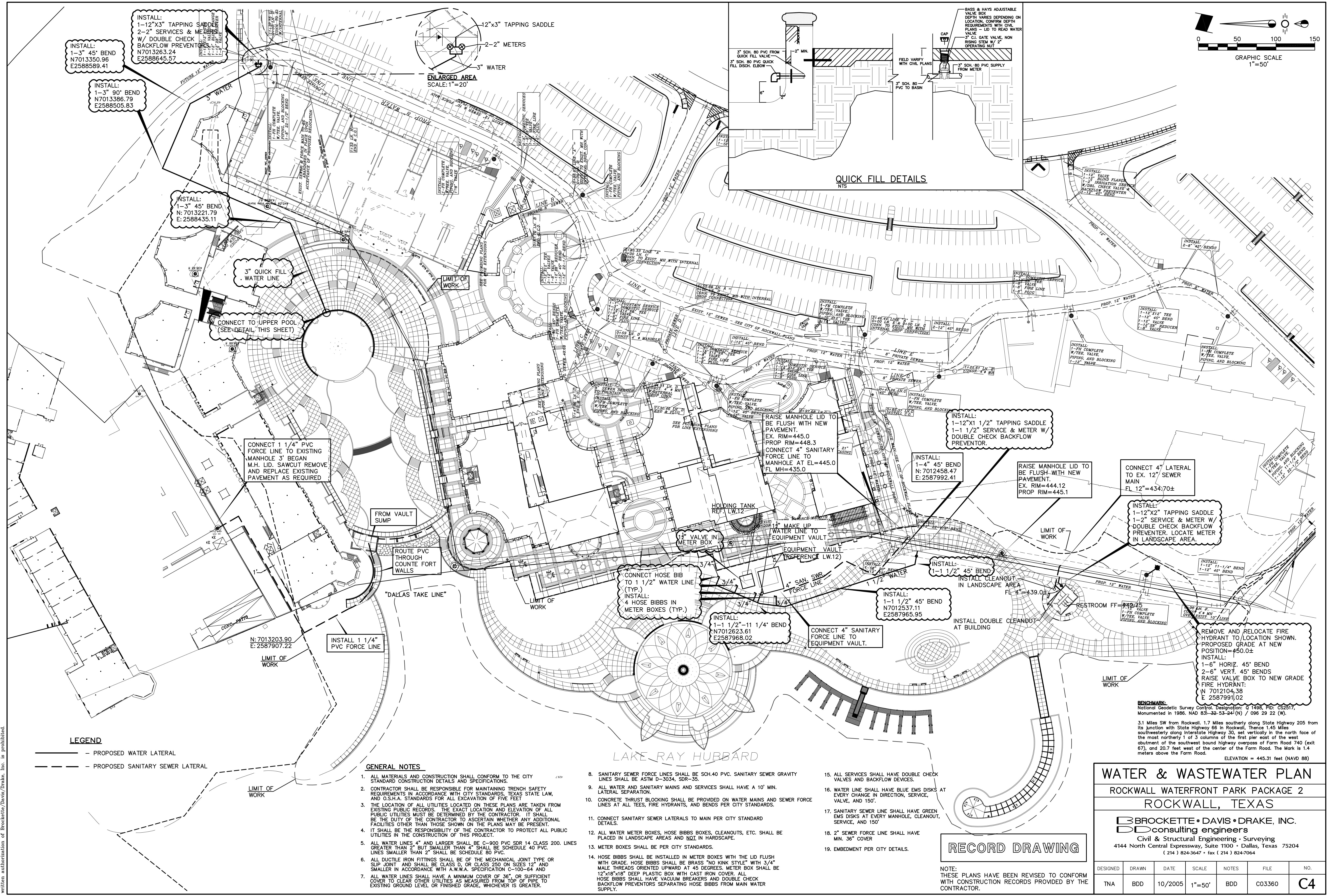


NO.	DATE	SCALE	NOTES	FILE	NO.
TNA	BDD	10/2005	1"=50'	BDD	C03360



INSTALL:
1-12"x3" TAPPING SADDLE
2-2" SERVICES & METERS
W/ DOUBLE CHECK
BACKFLOW PREVENTORS

INSTALL:
1-3" 45° BEND
N7013350.96
E2588589.41

INSTALL:
1-3" 90° BEND
N7013386.79
E2588505.83

INSTALL:
1-3" 45° BEND
N: 7013221.79
E: 2588435.11

INSTALL:
1-12"x1 1/2" TAPPING SADDLE
1-1 1/2" SERVICE & METER W/
DOUBLE CHECK BACKFLOW
PREVENTOR

INSTALL:
1-12"x1 1/2" TAPPING SADDLE
1-1 1/2" SERVICE & METER W/
DOUBLE CHECK BACKFLOW
PREVENTOR. LOCATE METER
IN LANDSCAPE AREA.

INSTALL:
1-12"x1 1/2" TAPPING SADDLE
1-1 1/2" SERVICE & METER W/
DOUBLE CHECK BACKFLOW
PREVENTOR. LOCATE METER
IN LANDSCAPE AREA.

INSTALL:
1-12"x1 1/2" TAPPING SADDLE
1-1 1/2" SERVICE & METER W/
DOUBLE CHECK BACKFLOW
PREVENTOR. LOCATE METER
IN LANDSCAPE AREA.

INSTALL:
1-12"x1 1/2" TAPPING SADDLE
1-1 1/2" SERVICE & METER W/
DOUBLE CHECK BACKFLOW
PREVENTOR. LOCATE METER
IN LANDSCAPE AREA.

INSTALL:
1-12"x1 1/2" TAPPING SADDLE
1-1 1/2" SERVICE & METER W/
DOUBLE CHECK BACKFLOW
PREVENTOR. LOCATE METER
IN LANDSCAPE AREA.

INSTALL:
1-12"x1 1/2" TAPPING SADDLE
1-1 1/2" SERVICE & METER W/
DOUBLE CHECK BACKFLOW
PREVENTOR. LOCATE METER
IN LANDSCAPE AREA.

INSTALL:
1-12"x1 1/2" TAPPING SADDLE
1-1 1/2" SERVICE & METER W/
DOUBLE CHECK BACKFLOW
PREVENTOR. LOCATE METER
IN LANDSCAPE AREA.

INSTALL:
1-12"x1 1/2" TAPPING SADDLE
1-1 1/2" SERVICE & METER W/
DOUBLE CHECK BACKFLOW
PREVENTOR. LOCATE METER
IN LANDSCAPE AREA.

INSTALL:
1-12"x1 1/2" TAPPING SADDLE
1-1 1/2" SERVICE & METER W/
DOUBLE CHECK BACKFLOW
PREVENTOR. LOCATE METER
IN LANDSCAPE AREA.

INSTALL:
1-12"x1 1/2" TAPPING SADDLE
1-1 1/2" SERVICE & METER W/
DOUBLE CHECK BACKFLOW
PREVENTOR. LOCATE METER
IN LANDSCAPE AREA.

INSTALL:
1-12"x1 1/2" TAPPING SADDLE
1-1 1/2" SERVICE & METER W/
DOUBLE CHECK BACKFLOW
PREVENTOR. LOCATE METER
IN LANDSCAPE AREA.

INSTALL:
1-12"x1 1/2" TAPPING SADDLE
1-1 1/2" SERVICE & METER W/
DOUBLE CHECK BACKFLOW
PREVENTOR. LOCATE METER
IN LANDSCAPE AREA.

INSTALL:
1-12"x1 1/2" TAPPING SADDLE
1-1 1/2" SERVICE & METER W/
DOUBLE CHECK BACKFLOW
PREVENTOR. LOCATE METER
IN LANDSCAPE AREA.

INSTALL:
1-12"x1 1/2" TAPPING SADDLE
1-1 1/2" SERVICE & METER W/
DOUBLE CHECK BACKFLOW
PREVENTOR. LOCATE METER
IN LANDSCAPE AREA.

INSTALL:
1-12"x1 1/2" TAPPING SADDLE
1-1 1/2" SERVICE & METER W/
DOUBLE CHECK BACKFLOW
PREVENTOR. LOCATE METER
IN LANDSCAPE AREA.

INSTALL:
1-12"x1 1/2" TAPPING SADDLE
1-1 1/2" SERVICE & METER W/
DOUBLE CHECK BACKFLOW
PREVENTOR. LOCATE METER
IN LANDSCAPE AREA.

INSTALL:
1-12"x1 1/2" TAPPING SADDLE
1-1 1/2" SERVICE & METER W/
DOUBLE CHECK BACKFLOW
PREVENTOR. LOCATE METER
IN LANDSCAPE AREA.

LEGEND
- - - PROPOSED WATER LATERAL
- - - PROPOSED SANITARY SEWER LATERAL

- GENERAL NOTES
- ALL MATERIALS AND CONSTRUCTION SHALL CONFORM TO THE CITY STANDARD CONSTRUCTION DETAILS AND SPECIFICATIONS.
 - CONTRACTOR SHALL BE RESPONSIBLE FOR MAINTAINING TRENCH SAFETY REQUIREMENTS IN ACCORDANCE WITH CITY STANDARDS, TEXAS STATE LAW, AND O.S.H.A. STANDARDS FOR ALL EXCAVATION OF FIVE FEET.
 - THE LOCATION OF ALL UTILITIES LOCATED ON THESE PLANS ARE TAKEN FROM EXISTING PUBLIC RECORDS. THE EXACT LOCATION AND ELEVATION OF ALL PUBLIC UTILITIES MUST BE DETERMINED BY THE CONTRACTOR. IT SHALL BE THE DUTY OF THE CONTRACTOR TO ASCERTAIN WHETHER ANY ADDITIONAL FACILITIES OTHER THAN THOSE SHOWN ON THE PLANS MAY BE PRESENT.
 - IT SHALL BE THE RESPONSIBILITY OF THE CONTRACTOR TO PROTECT ALL PUBLIC UTILITIES IN THE CONSTRUCTION OF THIS PROJECT.
 - ALL WATER LINES, 4" AND LARGER SHALL BE C-900 PVC SDR 14 CLASS 200. LINES SMALLER THAN 4" SHALL BE SCHEDULE 40 PVC.
 - ALL DUCTILE IRON FITTINGS SHALL BE OF THE MECHANICAL JOINT TYPE OR SLIP JOINT AND SHALL BE CLASS D, OR CLASS 250 ON SIZES 12" AND SMALLER IN ACCORDANCE WITH A.W.W.A. SPECIFICATION C-100-64 AND SMALLER.
 - ALL WATER LINES SHALL HAVE A MINIMUM COVER OF 36" OR SUFFICIENT COVER TO CLEAR OTHER UTILITIES AS MEASURED FROM 100' OF PIPE TO EXISTING GROUND LEVEL OR FINISHED GRADE, WHICHEVER IS GREATER.
 - SANITARY SEWER FORCE LINES SHALL BE SCH40 PVC. SANITARY SEWER GRAVITY LINES SHALL BE ASTM D-3034, SDR-35.
 - ALL WATER AND SANITARY MAINS AND SERVICES SHALL HAVE A 10' MIN. LATERAL SEPARATION.
 - CONCRETE THRUST BLOCKING SHALL BE PROVIDED ON WATER MAINS AND SEWER FORCE LINES AT ALL TEES, FIRE HYDRANTS, AND BENDS PER CITY STANDARDS.
 - CONNECT SANITARY SEWER LATERALS TO MAIN PER CITY STANDARD DETAILS.
 - ALL WATER METER BOXES, HOSE BIBBS BOXES, CLEANOUTS, ETC. SHALL BE PLACED IN LANDSCAPE AREAS AND NOT IN HARDSCAPE.
 - METER BOXES SHALL BE PER CITY STANDARDS.
 - HOSE BIBBS SHALL BE INSTALLED IN METER BOXES WITH THE LID FLUSH WITH GRADE. HOSE BIBBS SHALL BE BRASS "NO NINK STILE" WITH 3/4" MALE THREADS ORIENTED UPWARD AT 45 DEGREES. METER BOX SHALL BE 12"x18"x18" DEEP PLASTIC BOX WITH CAST IRON COVER. ALL HOSE BIBBS SHALL HAVE VACUUM BREAKERS AND DOUBLE CHECK BACKFLOW PREVENTORS SEPARATING HOSE BIBBS FROM MAIN WATER SUPPLY.
 - ALL SERVICES SHALL HAVE DOUBLE CHECK VALVES AND BACKFLOW DEVICES.
 - WATER LINE SHALL HAVE BLUE EMS DISKS AT EVERY CHANGE IN DIRECTION, SERVICE, VALVE, AND 150'.
 - SANITARY SEWER LINE SHALL HAVE GREEN EMS DISKS AT EVERY MANHOLE, CLEANOUT, SERVICE, AND 150'.
 - 2" SEWER FORCE LINE SHALL HAVE MIN. 36" COVER.
 - EMBEDMENT PER CITY DETAILS.

RECORD DRAWING

NOTE:
THESE PLANS HAVE BEEN REVISED TO CONFORM WITH CONSTRUCTION RECORDS PROVIDED BY THE CONTRACTOR.

WATER & WASTEWATER PLAN
ROCKWALL WATERFRONT PARK PACKAGE 2
ROCKWALL, TEXAS

BROCKETTE • DAVIS • DRAKE, INC.
consulting engineers
Civil & Structural Engineering - Surveying
4144 North Central Expressway, Suite 1100 • Dallas, Texas 75204
(214) 826-3647 • Fax: (214) 826-7064

DESIGNED	DRAWN	DATE	SCALE	NOTES	FILE	NO.
TNA	BDD	10/2005	1"=50'	BDD	C03360	C4

© Copyright 2005 BroCKETTE • DAVIS • DRAKE, Inc. All Rights Reserved.
No part of this drawing may be reproduced, stored in a retrieval system, or transmitted in any form or by any means, electronic, mechanical, photocopying, recording, or by any information storage and retrieval system, without the prior written permission of BroCKETTE • DAVIS • DRAKE, Inc. as prohibited.