

NOTE:  
 SEE SERIES LM DRAWINGS FOR  
 HARDSCAPE INCLUDED IN THIS CONTRACT

**CONTROL COORDINATES**

No.	Northing	Easting
500	7013172.070	2588232.657
501	7013173.538	2588227.089
502	7013172.248	2588210.493
503	7013169.594	2588186.987
504	7013181.992	2588190.956
505	7013195.952	2588210.688
506	7013207.943	2588167.639
507	7013202.520	2588214.663
508	7013218.003	2588191.813
509	7013220.686	2588190.305
510	7013211.224	2588201.818
511	7013204.648	2588197.855
512	7013178.496	2588145.242
513	7013178.540	2588115.338
514	7013203.043	2588158.922
515	7013195.504	2588163.159
516	7013145.895	2588163.596
517	7013154.674	2588128.562
518	7013145.947	2588119.615
519	7013141.211	2588135.547
520	7013140.909	2588144.344
521	7013204.307	2588198.221
522	7013156.948	2588088.872
523	7013149.435	2588063.036
524	7013173.639	2588106.621
525	7013132.299	2588070.604
526	7013122.130	2588040.030
527	7013140.650	2588046.402
528	7013124.100	2588249.216
529	7013119.424	2588245.674
530	7013112.358	2588232.882
531	7013088.047	2588188.564
532	7013081.563	2588198.852
533	7013085.381	2588215.127
534	7013093.721	2588242.510
535	7013089.035	2588253.838
536	7013183.406	2588177.258
537	7013176.340	2588171.484
538	7013065.059	2588219.779
539	7013053.455	2588195.897
540	7013062.610	2588245.358
541	7013051.635	2588186.054
542	7013175.940	2588171.785
543	7013060.909	2588161.118
544	7013042.536	2588136.889
545	7013081.527	2588158.964
546	7013066.084	2588134.613
547	7013070.536	2588123.414
548	7013091.172	2588152.215
549	7013092.859	2588161.230
550	7013093.066	2588168.091
551	7013053.045	2588128.358
552	7013040.716	2588127.056
553	7013031.617	2588077.891
554	7013065.243	2588078.784
555	7013032.953	2588059.873
556	7013039.854	2588054.804
557	7013035.557	2588038.368
558	7013109.425	2588021.532
559	7013110.805	2588011.915
560	7013162.343	2588116.012
561	7013154.934	2588106.819
562	7013154.466	2588106.994
563	7013056.717	2588116.596
564	7013056.219	2588116.548
565	7013075.207	2588180.739
566	7013074.707	2588180.736
567	7013072.576	2588189.629
568	7013077.651	2588239.089
569	7013076.654	2588239.014
570	7013075.510	2588244.096
571	7013073.800	2588248.950
572	7013030.144	2588030.294

**CURVE DATA**

NUMBER	DELTA ANGLE	CHORD DIRECTION	TANGENT	RADIUS	ARC LENGTH	CHORD LENGTH
C51	36°49'29"	N 12°50'22" W	39.9253	119.9339	77.0828	75.7629
C52	48°08'10"	N 10°30'06" W	46.3480	103.7672	87.1785	84.6372
C53	91°32'47"	N 71°48'24" E	60.2213	58.6175	93.6582	84.0088
C54	78°05'31"	S 30°21'18" W	24.0915	29.7018	40.4824	37.4209
C55	03°14'26"	N 70°35'24" W	2.5741	91.0000	5.1469	5.1462
C56	16°41'01"	N 77°18'42" W	2.6326	17.9541	5.2279	5.2095
C57	67°31'47"	N 71°35'09" E	19.3789	28.9862	34.1636	32.2203
C58	69°11'49"	N 85°51'40" E	44.5873	64.6366	78.0626	73.4041
C59	103°38'17"	S 73°10'36" W	21.8318	17.1682	31.0543	26.9905
C60	74°54'34"	N 56°53'31" E	14.5202	18.9541	24.7809	23.0533
C61	45°10'47"	N 09°41'13" E	11.5048	27.6524	21.8049	21.2443
C62	84°52'01"	N 89°54'56" W	20.2586	22.1600	32.8236	29.9042
C63	85°02'19"	S 84°30'04" E	18.0895	19.7279	29.2802	26.6657
C64	26°26'44"	N 76°31'35" W	4.6966	19.9886	9.2259	9.1443
C65	72°39'45"	N 53°55'10" E	15.0678	20.4886	25.9836	24.2770
C66	18°04'39"	N 06°01'50" E	6.2771	39.4592	12.4499	12.3983
C67	52°55'48"	S 54°43'10" W	13.5002	27.1187	25.0523	24.1709
C68	34°25'12"	S 83°33'29" W	12.3821	39.9752	24.0148	23.6554
C69	38°25'02"	S 85°33'25" W	8.8137	25.2970	16.9619	16.6459
C70	21°56'14"	N 19°21'46" W	25.9399	133.8400	51.2444	50.9319
C71	21°19'42"	N 18°25'19" W	26.8347	142.5067	53.0482	52.7424
C72	82°51'02"	N 75°55'57" W	24.0839	27.2936	39.4669	36.1172
C73	47°52'16"	S 61°04'55" W	7.9943	18.0099	15.0474	14.6135
C74	47°31'47"	S 61°15'09" W	27.6156	62.7171	52.0270	50.5480
C75	35°11'18"	S 76°48'01" W	8.7888	27.6524	16.9828	16.7171
C76	88°12'42"	N 73°03'34" E	19.9324	20.5645	31.6607	28.6252
C77	07°55'08"	S 68°15'04" E	5.1911	75.0000	10.3657	10.3574
C78	19°12'56"	N 74°57'29" W	6.2013	36.6344	12.2829	12.2287
C79	91°42'10"	N 64°05'37" E	19.0667	18.5083	29.4229	26.5608
C80	76°47'39"	S 57°02'11" W	29.4306	37.1359	49.7738	46.1309
C81	56°39'59"	N 82°12'04" W	10.3906	19.2706	19.0590	18.2916
C82	36°39'44"	N 51°03'04" E	6.2191	18.7706	12.0109	11.8071
C83	101°46'43"	N 52°49'31" E	24.1018	19.5945	34.8071	30.4079
C84	10°55'44"	S 56°31'02" E	4.9848	51.8998	9.8995	9.8845
C85	83°35'57"	S 76°13'08" W	46.4030	51.8998	75.7259	69.1852
C86	42°51'42"	N 57°37'02" E	15.4884	39.4592	29.5186	28.8351
C87	81°28'14"	N 38°20'44" E	9.7082	11.2728	16.0291	14.7125
C88	105°48'52"	N 63°11'43" E	66.2650	50.1026	92.5301	79.9297
C89	11°05'45"	N 45°42'54" E	6.2783	64.6366	12.5174	12.4978
C90	27°27'11"	N 39°15'11" E	4.6967	19.2279	9.2130	9.1251
C91	40°03'41"	N 49°22'02" W	9.8868	27.1187	18.9614	18.5775
C92	23°50'30"	N 31°04'23" E	3.9236	18.5852	7.7336	7.6779

**BASELINE CONTROL COORDINATES**

No.	Northing	Easting
B	7013160.45	2588276.75
C	7013067.06	2588006.10
D	7013151.78	2587986.80
E	7012982.34	2588025.40
M	7013149.88	2588046.00
N	7013223.62	2588177.19
O	7013042.79	2588167.69
P	7013020.16	2588065.42

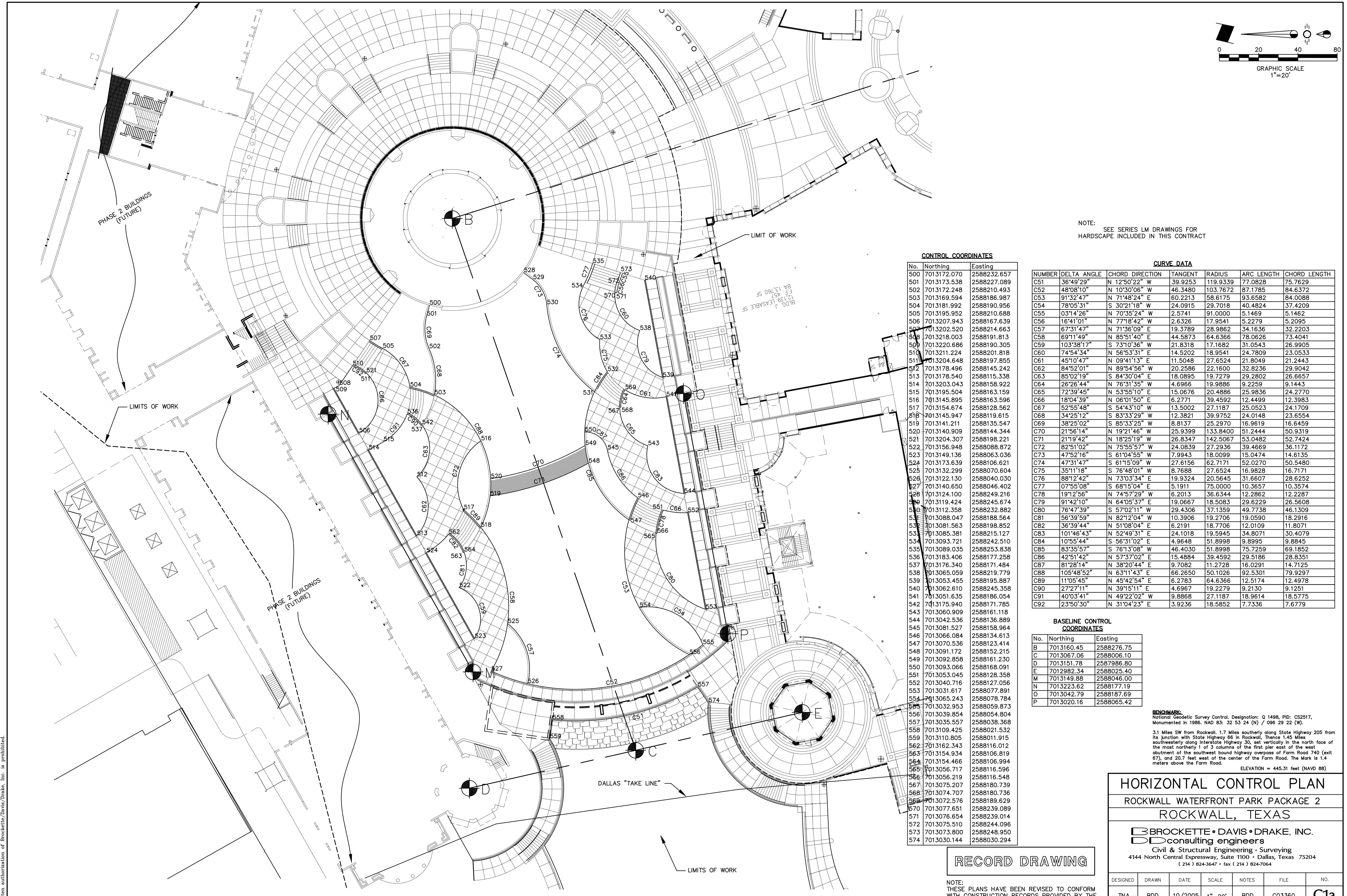
**BENCHMARK:**  
 National Geodetic Survey Control, Designation: O 1498, PID: CS2517,  
 Monumented in 1986, NAD 83: 32 53 24 (N) / 096 29 22 (W).  
 3.1 Miles SW from Rockwall, 1.7 Miles southerly along State Highway 205 from  
 its junction with State Highway 66 in Rockwall. Thence 1.45 Miles  
 southwesterly along Interstate Highway 30, set vertically in the north face of  
 the most northerly 1 of 3 columns of the first pier east of the west  
 abutment of the southwest bound highway overpass of Farm Road 740 (exit  
 67), and 20.7 feet west of the center of the Farm Road. The Mark is 1.4  
 meters above the Farm Road.  
 ELEVATION = 445.31 feet (NAVD 88)

DESIGNED	DRAWN	DATE	SCALE	NOTES	FILE	NO.
TNA	BDD	10/2005	1"=20'	BDD	C03360	C1a

**RECORD DRAWING**

NOTE:  
 THESE PLANS HAVE BEEN REVISED TO CONFORM  
 WITH CONSTRUCTION RECORDS PROVIDED BY THE  
 CONTRACTOR.

© Copyright 2005 Brockett/Davis/Drake, Inc. All rights reserved.  
 No part of this drawing may be reproduced, stored in a retrieval system,  
 Any modification or use of this drawing without the express  
 written authorization of Brockett/Davis/Drake, Inc. is prohibited.



K:\PROJECTS\030339 - ROCKWALL WATERFRONT PARK\PACKAGE 2\CD\PAVING PLAN\11170310.132529.PLT