



**LEGEND**

 CONCRETE PAVEMENT W/  
CURB REMOVAL AND  
REPLACEMENT

**NOTES:**

1. ALL EXISTING FRANCHISE UTILITIES SHALL BE PROTECTED AND REMAIN IN SERVICE THROUGHOUT CONSTRUCTION UNLESS OTHERWISE NOTED ON PLANS. CONTRACTOR SHALL VERIFY LOCATIONS AND DEPTHS. EXISTING WATER AND SANITARY SEWER LINES SHALL BE KEPT IN SERVICE UNTIL NEW LINES ARE CONSTRUCTED, TESTED, AND OPERATIONAL.
2. ALL DIMENSIONS ARE TO BACK OF CURB UNLESS NOTED OTHERWISE.
3. INSTALL BLUE EMS DISK ON WATER LINE AT EVERY CHANGE IN DIRECTION, FIRE HYDRANT, AND VALVE.
4. WATER LINE SHALL BE CLASS 200 DR 14.

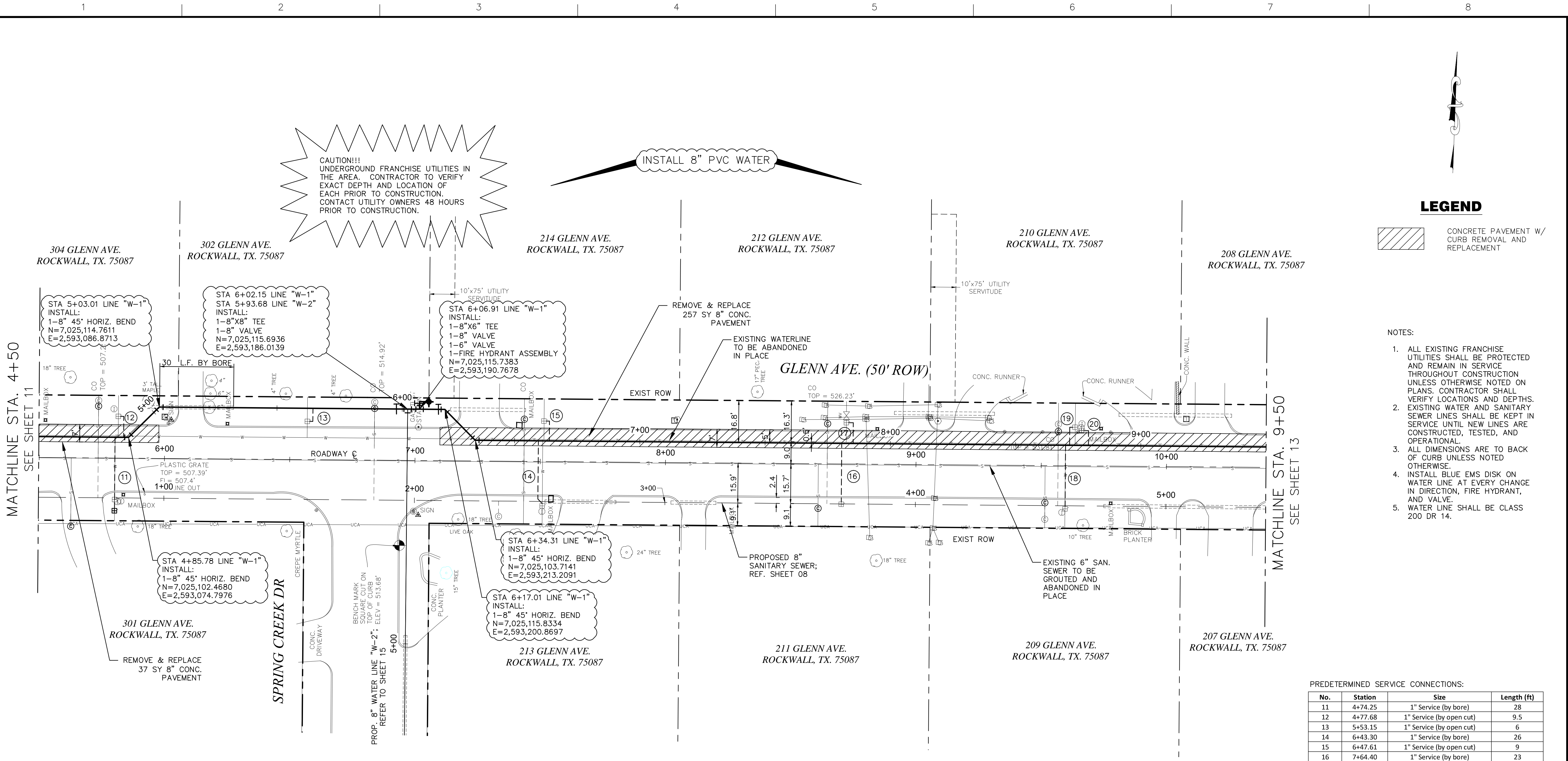
**PREDETERMINED SERVICE CONNECTIONS:**

No.	Station	Size	Length (ft)
11	4+74.25	1" Service (by bore)	28
12	4+77.68	1" Service (by open cut)	9.5
13	5+53.15	1" Service (by open cut)	6
14	6+43.30	1" Service (by bore)	26
15	6+47.61	1" Service (by open cut)	9
16	7+64.40	1" Service (by bore)	23
17	7+68.91	1" Service (by open cut)	10
18	8+53.70	1" Service (by bore)	24
19	8+55.35	1" Service (by open cut)	8
20	8+62.80	1" Service (by open cut)	8

NOTE: SERVICE INFORMATION SHOWN FOR INFORMATIONAL PURPOSES ONLY. CONTRACTOR SHALL CONFIRM SERVICE CONNECTION LOCATION, SIZE, AND LENGTH PRIOR TO CONSTRUCTION.

**CAUTION!!!**  
UNDERGROUND FRANCHISE UTILITIES IN THE AREA. CONTRACTOR TO VERIFY EXACT DEPTH AND LOCATION OF EACH PRIOR TO CONSTRUCTION. CONTACT UTILITY OWNERS 48 HOURS PRIOR TO CONSTRUCTION.

INSTALL 8" PVC WATER



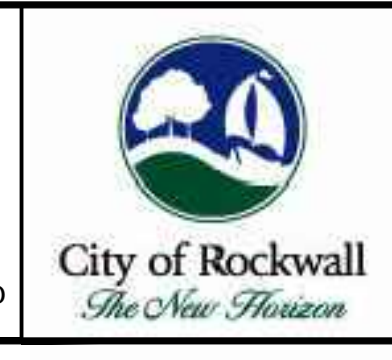
**VERDUNITY**  
A better future, by design.  
17000 Preston Road, Suite 110, Dallas TX. 75248  
(214)425-6720  
www.verdunity.com  
Texas P.E. Firm Registration No. F-13496

**RECORD DRAWINGS**

ISSUE	DATE	DESCRIPTION
1	12/17/14	RECORD DRAWINGS

DESIGNED BY: K. GREEN  
DRAWN BY: E. MAGEE  
CHECKED BY: K. SHEPHERD  
DATE: 12/16/2014  
JOB NUMBER: 004-002

**RECORD DRAWINGS**  
THESE PLANS ARE A RECORD SET OF THE CONSTRUCTED PROJECT AND REFLECT REVISIONS AND CONSTRUCTION-RELATED CHANGES AS MADE BY THE CONTRACTOR. CHANGES MADE FROM THE ORIGINAL CONSTRUCTION DOCUMENTS DO NOT DEPICT ENGINEERING AND ARE NOT THE RESPONSIBILITY OF VERDUNITY, INC. OR THE ENGINEER ON RECORD ON THE ORIGINAL DOCUMENTS. ORIGINAL PLANS RELEASED FOR CONSTRUCTION WERE SEALED BY KEVIN M. SHEPHERD, PE NO. 88642



**GLENN AVE. UTILITY REHABILITATION**

**WATERLINE PLAN**  
LINE "W-1" STA. 4+50 TO STA. 9+50

0 20' 40'

SHEET 12