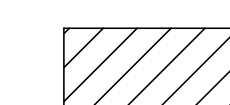


LEGEND

 CONCRETE PAVEMENT W/ CURB REMOVAL AND REPLACEMENT

NOTES:

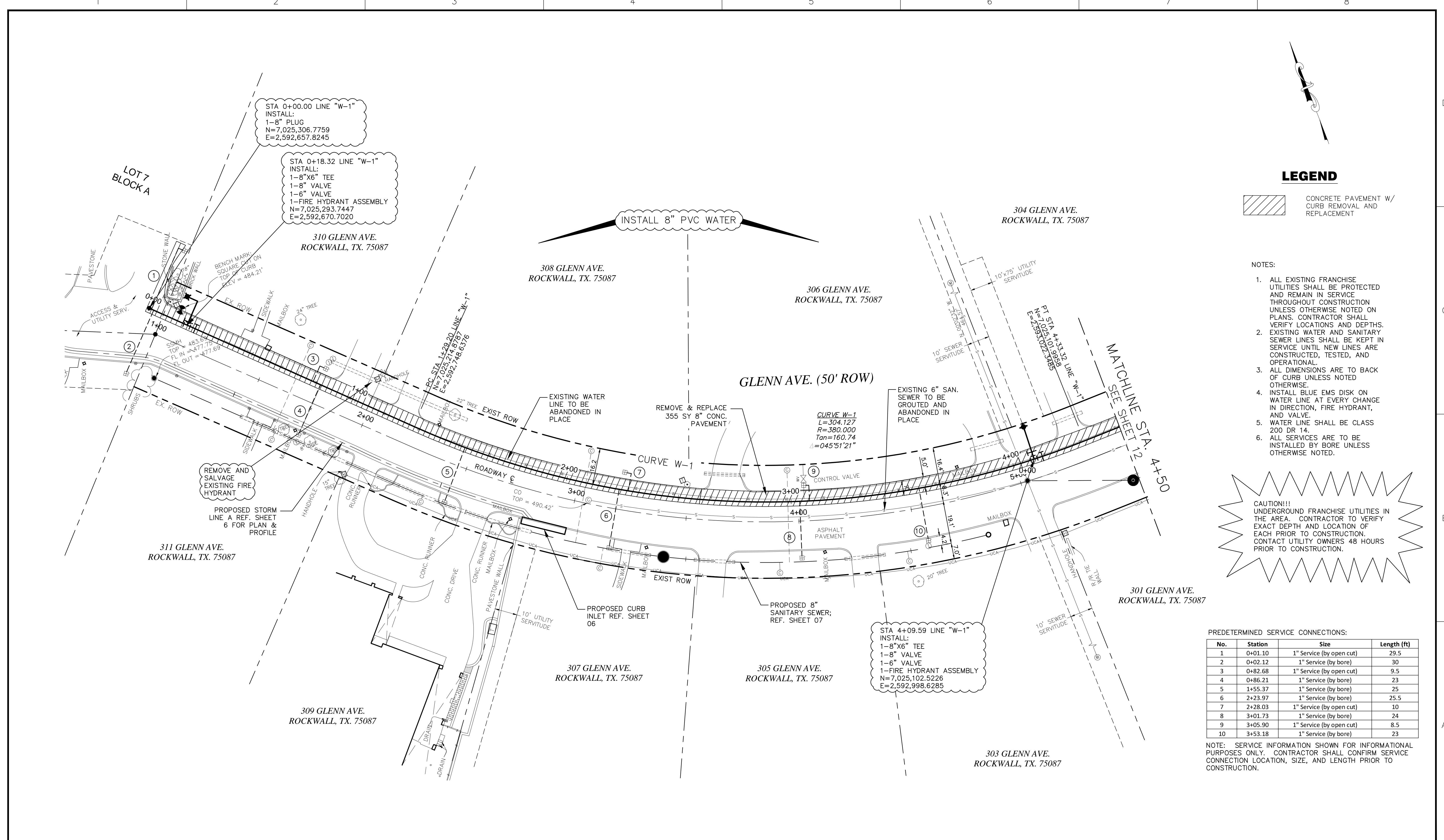
1. ALL EXISTING FRANCHISE UTILITIES SHALL BE PROTECTED AND REMAIN IN SERVICE THROUGHOUT CONSTRUCTION UNLESS OTHERWISE NOTED ON PLANS. CONTRACTOR SHALL VERIFY LOCATIONS AND DEPTHS.
2. EXISTING WATER AND SANITARY SEWER LINES SHALL BE KEPT IN SERVICE UNTIL NEW LINES ARE CONSTRUCTED, TESTED, AND OPERATIONAL.
3. ALL DIMENSIONS ARE TO BACK OF CURB UNLESS NOTED OTHERWISE.
4. INSTALL BLUE EMS DISK ON WATER LINE AT EVERY CHANGE IN DIRECTION, FIRE HYDRANT, AND VALVE.
5. WATER LINE SHALL BE CLASS 200 DR 14.
6. ALL SERVICES ARE TO BE INSTALLED BY BORE UNLESS OTHERWISE NOTED.

CAUTION!!!
UNDERGROUND FRANCHISE UTILITIES IN THE AREA. CONTRACTOR TO VERIFY EXACT DEPTH AND LOCATION OF EACH PRIOR TO CONSTRUCTION. CONTACT UTILITY OWNERS 48 HOURS PRIOR TO CONSTRUCTION.

PREDETERMINED SERVICE CONNECTIONS:

No.	Station	Size	Length (ft)
1	0+01.10	1" Service (by open cut)	29.5
2	0+02.12	1" Service (by bore)	30
3	0+82.68	1" Service (by open cut)	9.5
4	0+86.21	1" Service (by bore)	23
5	1+55.37	1" Service (by bore)	25
6	2+23.97	1" Service (by bore)	25.5
7	2+28.03	1" Service (by open cut)	10
8	3+01.73	1" Service (by bore)	24
9	3+05.90	1" Service (by open cut)	8.5
10	3+53.18	1" Service (by bore)	23

NOTE: SERVICE INFORMATION SHOWN FOR INFORMATIONAL PURPOSES ONLY. CONTRACTOR SHALL CONFIRM SERVICE CONNECTION LOCATION, SIZE, AND LENGTH PRIOR TO CONSTRUCTION.



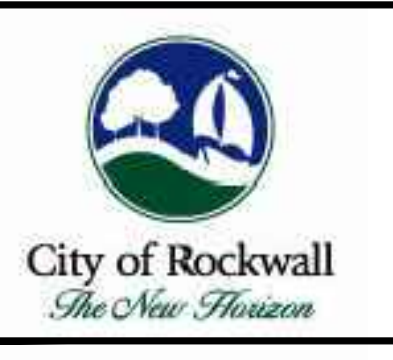
VERDUNITY
A better future, by design.
17000 Preston Road, Suite 110, Dallas TX. 75248
(214)425-6720
www.verdunity.com
Texas P.E. Firm Registration No. F-13496

RECORD DRAWINGS

ISSUE	DATE	DESCRIPTION
1	12/17/14	RECORD DRAWINGS

DESIGNED BY: K. GREEN
DRAWN BY: E. MAGEE
CHECKED BY: K. SHEPHERD
DATE: 12/16/2014
JOB NUMBER: 004-002

RECORD DRAWINGS
THESE PLANS ARE A RECORD SET OF THE CONSTRUCTED PROJECT AND REFLECT REVISIONS AND CONSTRUCTION-RELATED CHANGES AS MADE BY THE CONTRACTOR. CHANGES MADE FROM THE ORIGINAL CONSTRUCTION DOCUMENTS DO NOT DEPICT ENGINEERING AND ARE NOT THE RESPONSIBILITY OF VERDUNITY, INC. OR THE ENGINEER ON RECORD ON THE ORIGINAL DOCUMENTS. ORIGINAL PLANS RELEASED FOR CONSTRUCTION WERE SEALED BY KEVIN M. SHEPHERD, PE NO. 88642



GLENN AVE. UTILITY REHABILITATION

WATERLINE PLAN
LINE "W-1" STA. 1+00 TO STA. 4+50

0 20' 40'

SHEET **11**