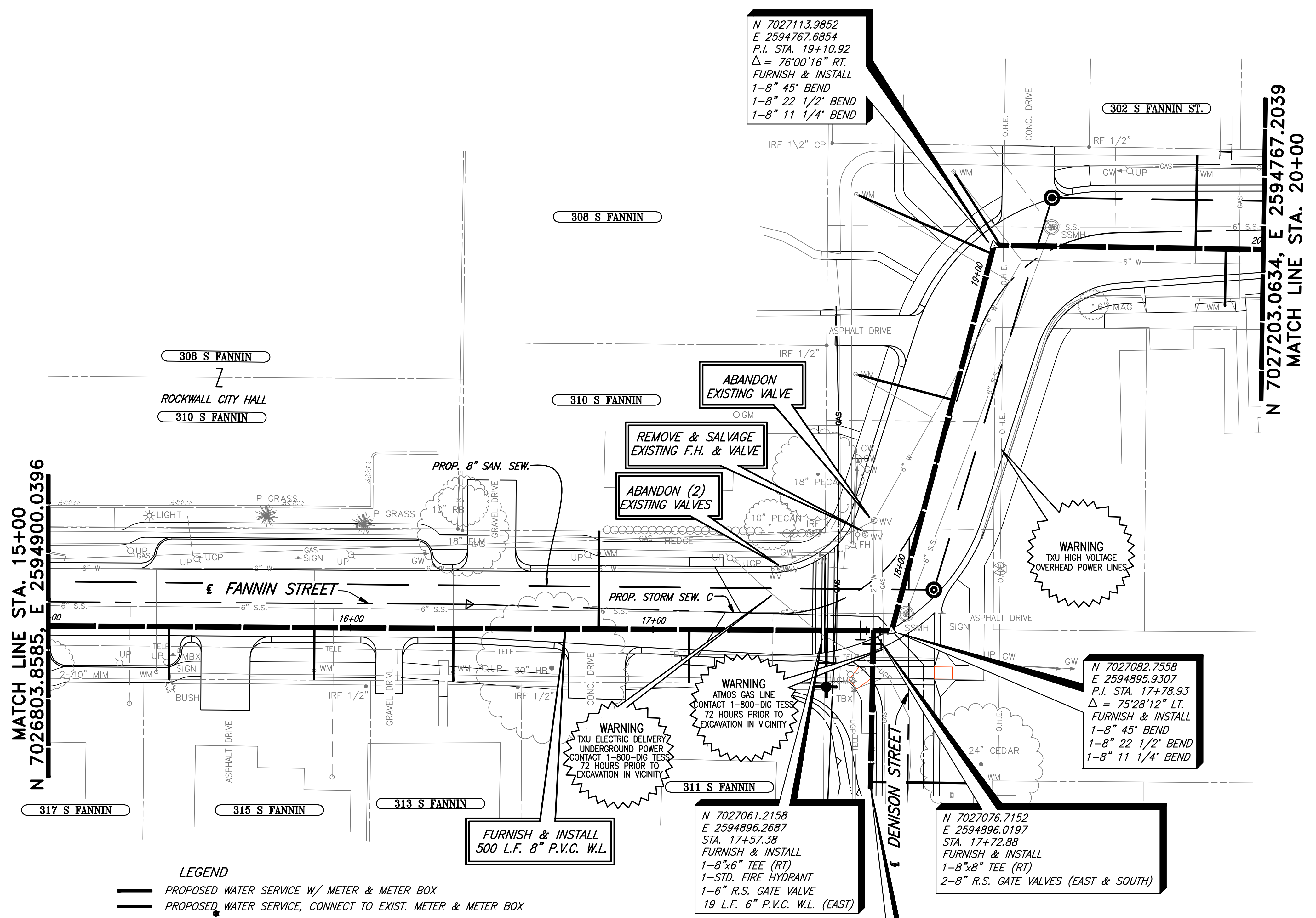


REVISION: 4/29/09 - GDAVIS
 C:\Acad_Jobs\Rockwall\2005111\Sheets\2005111-030_WL-04.dwg
 PLOT SCALE: 1:20
 PLOT STYLE: 22X34.ctb
 PLOTTED BY: GDAVIS ON 4/30/2009



PROPOSED FANNIN STREET WATER SERVICES

LOCATION	PROPOSED 1 INCH SERVICE
W.L. STA. 15+40	17.5 L.F. (RT.)
W.L. STA. 15+88	17.5 L.F. (RT.)
W.L. STA. 16+34	17.5 L.F. (RT.)
W.L. STA. 16+82	32.5 L.F. (LT.)
W.L. STA. 17+12	17.5 L.F. (RT.)
W.L. STA. 18+57	33 L.F. (LT.)
W.L. STA. 19+08	48 L.F. (LT.)
W.L. STA. 19+13	28 L.F. (LT.)
W.L. STA. 19+68	31 L.F. (LT.)
W.L. STA. 19+77	31 L.F. (LT.)
W.L. STA. 19+88	19 L.F. (RT.)
TOTAL: 292.5 L.F.	

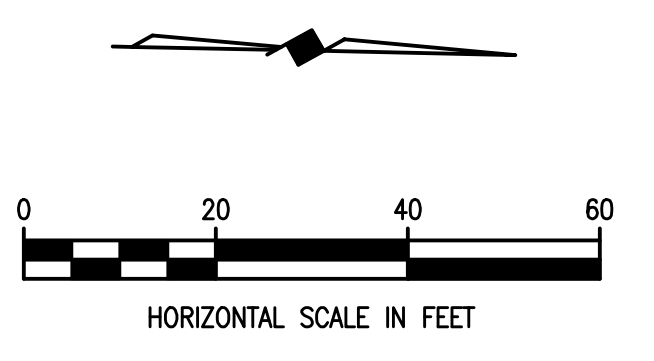
FURNISH & INSTALL PROP. 1" OUTLET AND NEW 1" SDR-9 (POLYTUBE) WATER SERVICE. TRANSFER OF WATER SERVICE SHALL INCLUDE FITTINGS, 1" SERVICE SADDLE, CONNECTION TO EXISTING SERVICE. METER AND METER BOX SHALL BE PAID ON A PER EACH BASIS.

This record drawing is a compilation of the sealed engineering drawing for this project; modified by addenda, change orders and information furnished by the contractor. The information shown on the record drawings that was provided by the contractor or others not associated with the design engineer cannot be verified for accuracy or completeness. This original sealed drawings are on file at the offices of Birkhoff, Hendricks & Conway, L.L.P.

BY MH DATE 4/25/09

THESE DOCUMENTS ARE FOR BIDDING, CONSTRUCTION, AND PERMIT PURPOSES.

DATE: 4/19/09



These plans and related specifications were prepared for construction of this specific project only. Reuse of these documents is not permitted without written authorization of Birkhoff, Hendricks, & Conway, L.L.P.

CITY OF ROCKWALL, TEXAS

FANNIN STREET IMPROVEMENTS
WATER LINE - PLAN
STA. 15+00 TO STA. 20+00

BIRKHOFF, HENDRICKS & CONWAY, L.L.P.
 CONSULTING ENGINEERS
 Dallas, Texas

PROJECT ENGINEER: <u>M.H.</u>	PROJECT: <u>2005111</u>	SHEET NO. <u>30</u>
PROJECT TECHNICIAN: <u>MVO</u>	DATE: <u>June, 2006</u>	