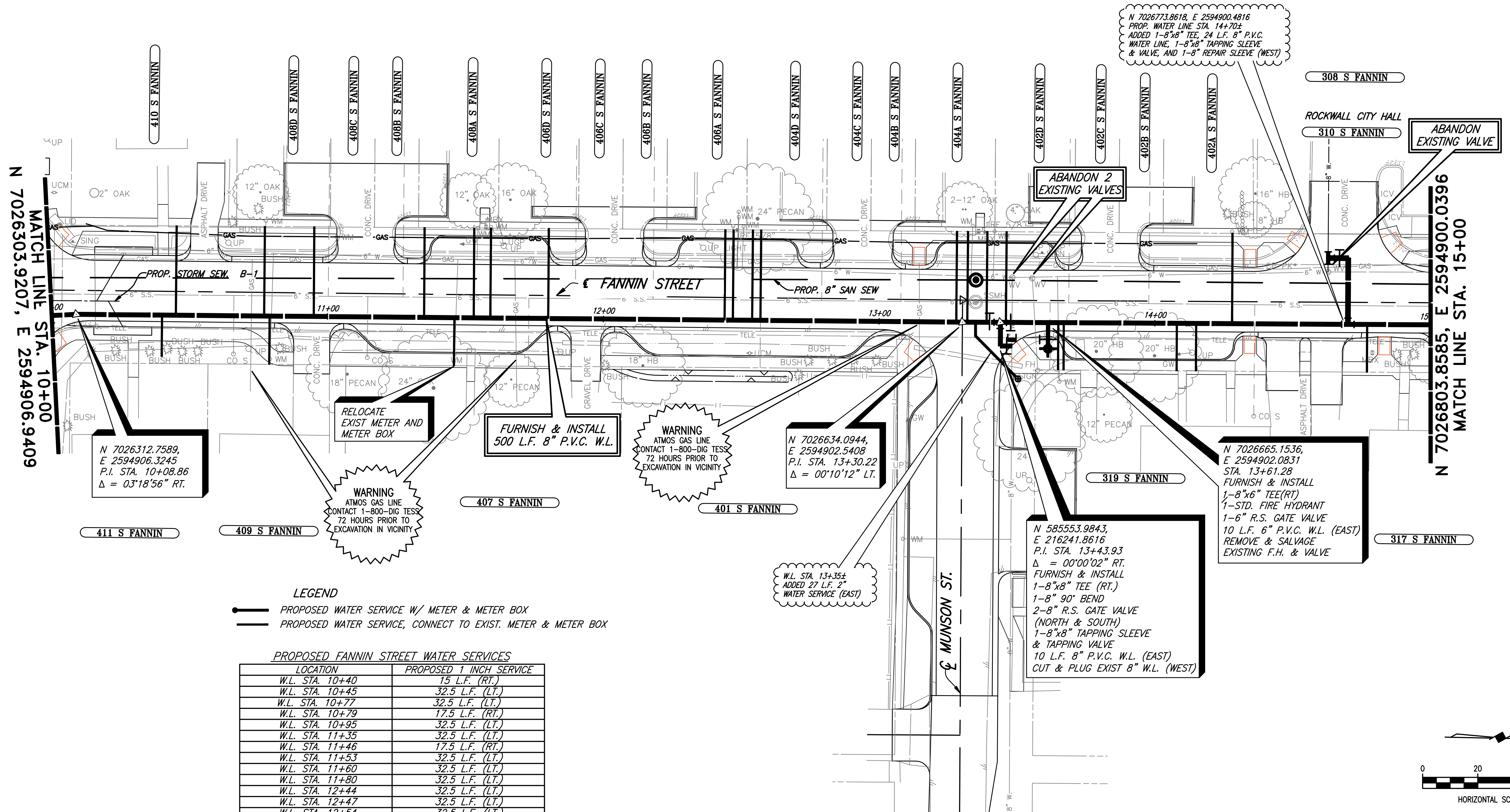


PLOTTED BY: GDAVIS ON 4/30/2009  
 PLOT STYLE: 22X34.ctb  
 PLOT SCALE: 1:20  
 C:\Acad\_Jobs\Rockwall\2005111\Sheets\2005111-029\_WL-03.dwg  
 REVISED: 4/29/09 - GDAVIS



**LEGEND**

- PROPOSED WATER SERVICE W/ METER & METER BOX
- PROPOSED WATER SERVICE, CONNECT TO EXIST. METER & METER BOX

**PROPOSED FANNIN STREET WATER SERVICES**

LOCATION	PROPOSED 1 INCH SERVICE
W.L. STA. 10+40	15 L.F. (RT.)
W.L. STA. 10+45	32.5 L.F. (LT.)
W.L. STA. 10+77	32.5 L.F. (LT.)
W.L. STA. 10+79	17.5 L.F. (RT.)
W.L. STA. 10+95	32.5 L.F. (LT.)
W.L. STA. 11+35	32.5 L.F. (LT.)
W.L. STA. 11+46	17.5 L.F. (RT.)
W.L. STA. 11+53	32.5 L.F. (LT.)
W.L. STA. 11+60	32.5 L.F. (LT.)
W.L. STA. 11+80	32.5 L.F. (LT.)
W.L. STA. 12+44	32.5 L.F. (LT.)
W.L. STA. 12+47	32.5 L.F. (LT.)
W.L. STA. 12+54	32.5 L.F. (LT.)
W.L. STA. 12+57	32.5 L.F. (LT.)
W.L. STA. 13+28	33 L.F. (LT.)
W.L. STA. 13+32	33 L.F. (LT.)
W.L. STA. 13+39	33 L.F. (LT.)
W.L. STA. 13+46	33 L.F. (LT.)
W.L. STA. 13+65	17 L.F. (RT.)
W.L. STA. 13+67±	17 L.F. (RT.)
W.L. STA. 14+08	17 L.F. (RT.)
W.L. STA. 14+15	17 L.F. (RT.)
W.L. STA. 14+20	33 L.F. (LT.)
W.L. STA. 14+28	33 L.F. (LT.)
W.L. STA. 14+77	17 L.F. (RT.)

TOTAL: 673.5 L.F.  
 FURNISH & INSTALL PROP. 1" OUTLET AND NEW 1" SDR-9 (POLYTUBE) WATER SERVICE. TRANSFER OF WATER SERVICE SHALL INCLUDE FITTINGS, 1" SERVICE SADDLE, CONNECTION TO EXISTING SERVICE. METER AND METER BOX SHALL BE PAID ON A PER EACH BASIS.

W.L. STA. 13+67±  
 ADDED 17 L.F. 1"  
 WATER SERVICE (EAST)

WARNING  
 ATMOS GAS LINE  
 CONTACT 1-800-DIG TEST  
 72 HOURS PRIOR TO  
 EXCAVATION IN VICINITY

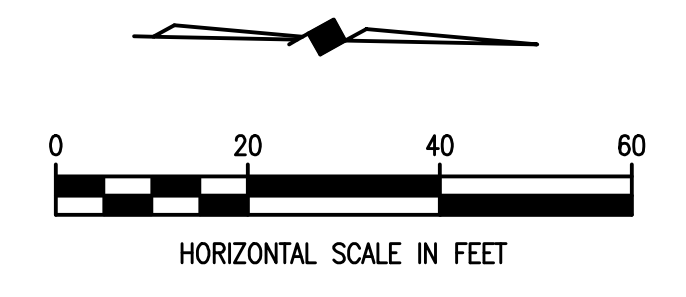
WARNING  
 ATMOS GAS LINE  
 CONTACT 1-800-DIG TEST  
 72 HOURS PRIOR TO  
 EXCAVATION IN VICINITY

N 7026634.0944,  
 E 2594902.5408  
 P.I. STA. 13+30.22  
 Δ = 00°10'12" LT.

N 585553.9843,  
 E 216241.8616  
 P.I. STA. 13+43.93  
 Δ = 00°00'02" RT.  
 FURNISH & INSTALL  
 1-8"x8" TEE (RT.)  
 1-8" 90° BEND  
 2-8" R.S. GATE VALVE  
 (NORTH & SOUTH)  
 1-8"x8" TAPPING SLEEVE  
 & TAPPING VALVE  
 10 L.F. 8" P.V.C. W.L. (EAST)  
 CUT & PLUG EXIST 8" W.L. (WEST)

N 7026665.1536,  
 E 2594902.0831  
 STA. 13+61.28  
 FURNISH & INSTALL  
 1-8"x6" TEE(RT)  
 1-STD. FIRE HYDRANT  
 1-6" R.S. GATE VALVE  
 10 L.F. 6" P.V.C. W.L. (EAST)  
 REMOVE & SALVAGE  
 EXISTING F.H. & VALVE

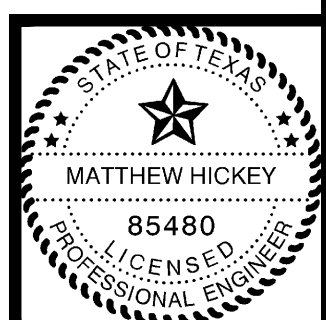
N 7026773.8618, E 2594900.4816  
 PROP. WATER LINE STA. 14+70±  
 ADDED 1-8"x8" TEE, 24 L.F. 8" P.V.C.  
 WATER LINE, 1-8"x8" TAPPING SLEEVE  
 & VALVE, AND 1-8" REPAIR SLEEVE (WEST)



These plans and related specifications were prepared for construction of this specific project only. Reuse of these documents is not permitted without written authorization of Birkhoff, Hendricks, & Conway, L.L.P.

This record drawing is a compilation of the sealed engineering drawing for this project; modified by addenda, change orders and information furnished by the contractor. The information shown on the record drawings that was provided by the contractor or others not associated with the design engineer cannot be verified for accuracy or completeness. This original sealed drawings are on file at the offices of Birkhoff, Hendricks & Conway, L.L.P.  
 BY MH DATE 4/25/09

THESE DOCUMENTS ARE FOR BIDDING, CONSTRUCTION, AND PERMIT PURPOSES.  
 DATE: 4/25/09



**CITY OF ROCKWALL, TEXAS**

FANNIN STREET IMPROVEMENTS  
**WATER LINE - PLAN**  
 STA. 10+00 TO STA. 15+00  
**BIRKHOFF, HENDRICKS & CONWAY, L.L.P.**  
 CONSULTING ENGINEERS  
 Dallas, Texas

PROJECT ENGINEER: M.H.	PROJECT: 2005111	SHEET NO. 29
PROJECT TECHNICIAN: MVO	DATE: June, 2006	