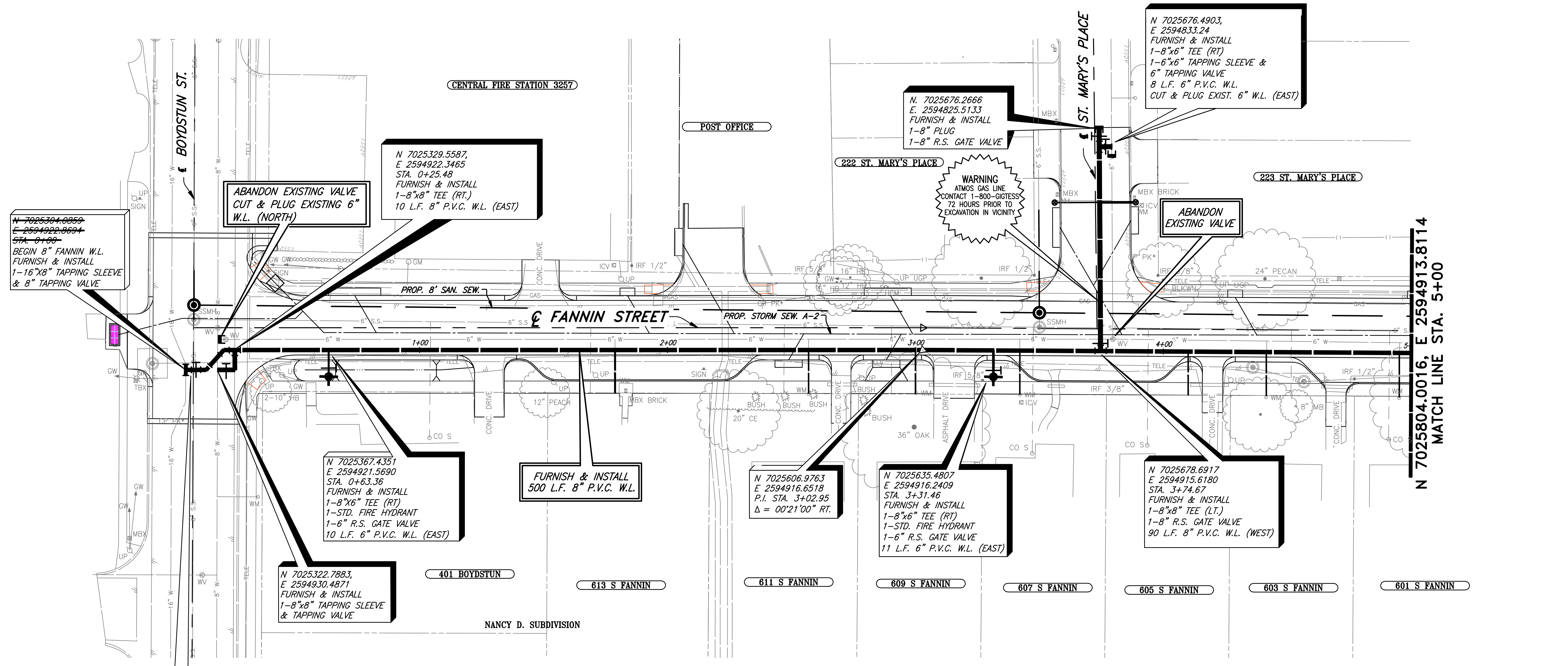


REVISION: 4/29/09 - GDAVIS  
 C:\Acad\_Jobs\Rockwall\2005111\Sheets\2005111-027\_WL-01.dwg  
 PLOT SCALE: 1:20  
 PLOT STYLE: 22X34.ctb  
 PLOTTED BY: GDAVIS ON 4/30/2009



N 7025304.0059  
 E 2594922.9694  
 STA. 0+00  
 BEGIN 8" FANNIN W.L.  
 FURNISH & INSTALL  
 1-16"x8" TAPPING SLEEVE  
 & 8" TAPPING VALVE

ABANDON EXISTING VALVE  
 CUT & PLUG EXISTING 6"  
 W.L. (NORTH)

N 7025329.5587,  
 E 2594922.3465  
 STA. 0+25.48  
 FURNISH & INSTALL  
 1-8"x8" TEE (RT.)  
 10 L.F. 8" P.V.C. W.L. (EAST)

N. 7025676.2666  
 E. 2594825.5133  
 FURNISH & INSTALL  
 1-8" PLUG  
 1-8" R.S. GATE VALVE

N 7025676.4903,  
 E 2594833.24  
 FURNISH & INSTALL  
 1-8"x6" TEE (RT)  
 1-6"x6" TAPPING SLEEVE &  
 6" TAPPING VALVE  
 8 L.F. 6" P.V.C. W.L.  
 CUT & PLUG EXIST. 6" W.L. (EAST)

N 7025367.4351  
 E 2594921.5690  
 STA. 0+63.36  
 FURNISH & INSTALL  
 1-8"x6" TEE (RT)  
 1-STD. FIRE HYDRANT  
 1-6" R.S. GATE VALVE  
 10 L.F. 6" P.V.C. W.L. (EAST)

FURNISH & INSTALL  
 500 L.F. 8" P.V.C. W.L.

N 7025606.9763  
 E 2594916.6518  
 P.I. STA. 3+02.95  
 Δ = 00°21'00" RT.

N 7025635.4807  
 E 2594916.2409  
 STA. 3+31.46  
 FURNISH & INSTALL  
 1-8"x6" TEE (RT)  
 1-STD. FIRE HYDRANT  
 1-6" R.S. GATE VALVE  
 11 L.F. 6" P.V.C. W.L. (EAST)

N 7025678.6917  
 E 2594915.6180  
 STA. 3+74.67  
 FURNISH & INSTALL  
 1-8"x8" TEE (LT.)  
 1-8" R.S. GATE VALVE  
 90 L.F. 8" P.V.C. W.L. (WEST)

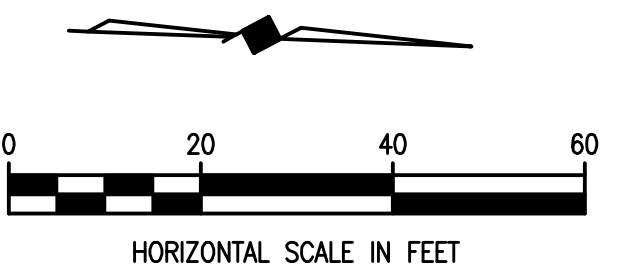
N 7025804.0016, E 2594913.8114  
 MATCH LINE STA. 5+00

SHIFTED WATER LINE CONNECTION POINT TO  
 THE EAST AND ADDED 2-8" 45° BENDS  
 FOR MAKING THE OFFSET IN ORDER TO  
 AVOID UNDERGROUND TELEPHONE CABLE

**LEGEND**

PROPOSED FANNIN STREET WATER SERVICES	
LOCATION	PROPOSED 1 INCH SERVICE
W.L. STA. 1+79	17.5 L.F. (RT.)
W.L. STA. 2+57	17.5 L.F. (RT.)
W.L. STA. 3+00	17.5 L.F. (RT.)
W.L. STA. 3+42	17.5 L.F. (RT.)
W.L. STA. 4+10	17.5 L.F. (RT.)
W.L. STA. 4+41	17.5 L.F. (RT.)
W.L. STA. 4+95	17.5 L.F. (RT.)
TOTAL: 122.5 L.F.	
PROPOSED ST. MARY'S PLACE WATER SERVICES	
LOCATION	PROPOSED 1 INCH SERVICE
W.L. STA. 0+60	20 L.F. (LT.)
W.L. STA. 0+60	15 L.F. (LT.)
TOTAL: 35 L.F.	
FURNISH & INSTALL PROP. 1" OUTLET AND NEW 1" SDR-9 (POLYTUBE) WATER SERVICE. TRANSFER OF WATER SERVICE SHALL INCLUDE FITTINGS, 1" SERVICE SADDLE, CONNECTION TO EXISTING SERVICE. METER AND METER BOX SHALL BE PAID ON A PER EACH BASIS.	

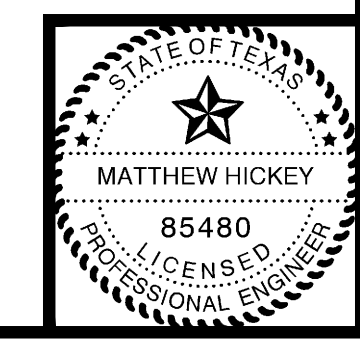
This record drawing is a compilation of the sealed engineering drawing for this project; modified by addenda, change orders and information furnished by the contractor. The information shown on the record drawings that was provided by the contractor or others not associated with the design engineer cannot be verified for accuracy or completeness. This original sealed drawings are on file at the offices of Birkhoff, Hendricks & Conway, L.L.P.  
 BY MH DATE 4/25/09



These plans and related specifications were prepared for construction of this specific project only. Reuse of these documents is not permitted without written authorization of Birkhoff, Hendricks, & Conway, L.L.P.

**CITY OF ROCKWALL, TEXAS**  
 FANNIN STREET IMPROVEMENTS  
 WATER LINE - PLAN  
 STA. 0+00 TO STA. 5+00  
**BIRKHOFF, HENDRICKS & CONWAY, L.L.P.**  
 CONSULTING ENGINEERS  
 Dallas, Texas

PROJECT ENGINEER: M.H.	PROJECT: 2005111	SHEET NO. 27
PROJECT TECHNICIAN: MVO	DATE: June, 2006	



THESE DOCUMENTS ARE FOR  
 BIDDING, CONSTRUCTION,  
 AND PERMIT PURPOSES.  
 Matthew Hickey  
 DATE: 6/19/06