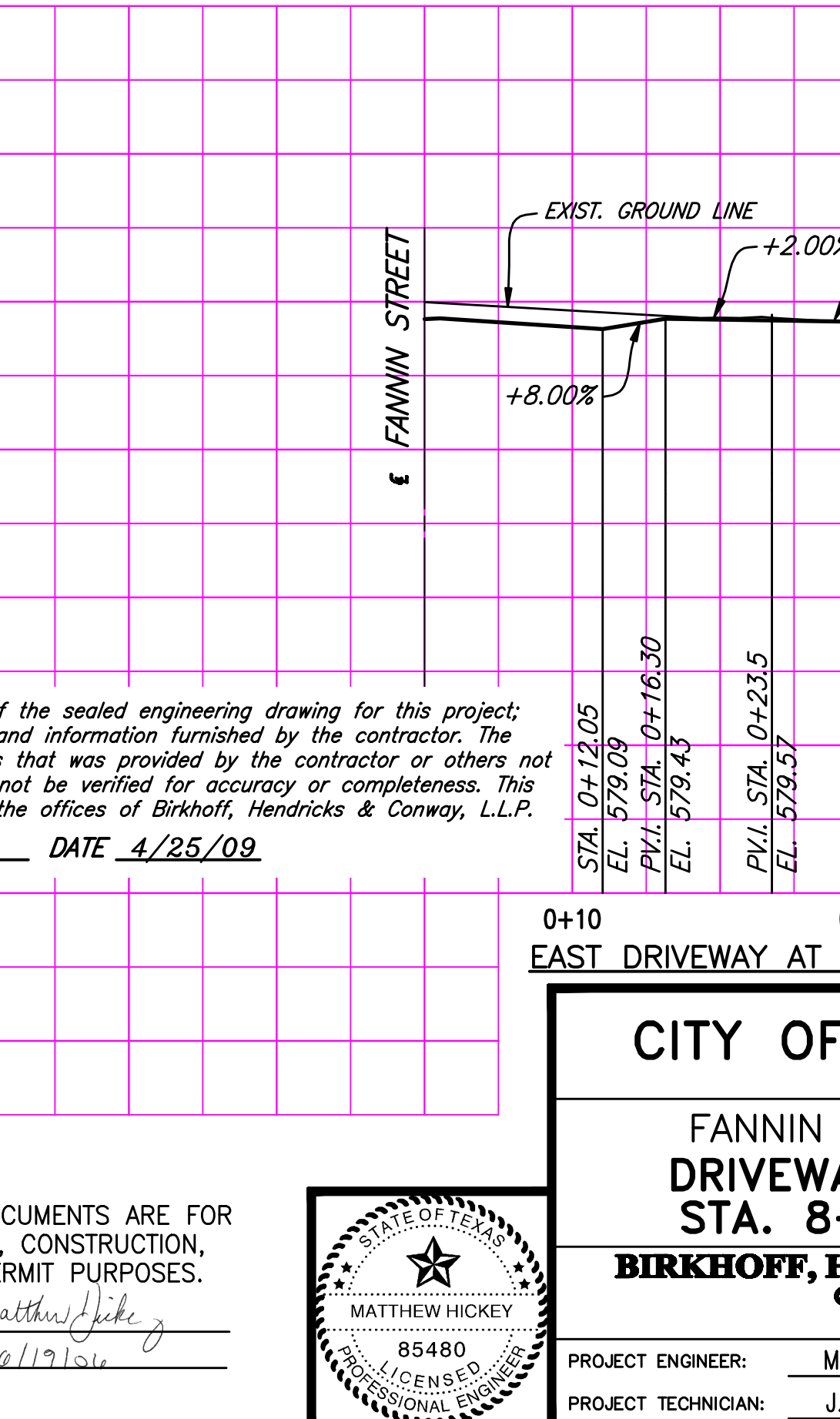
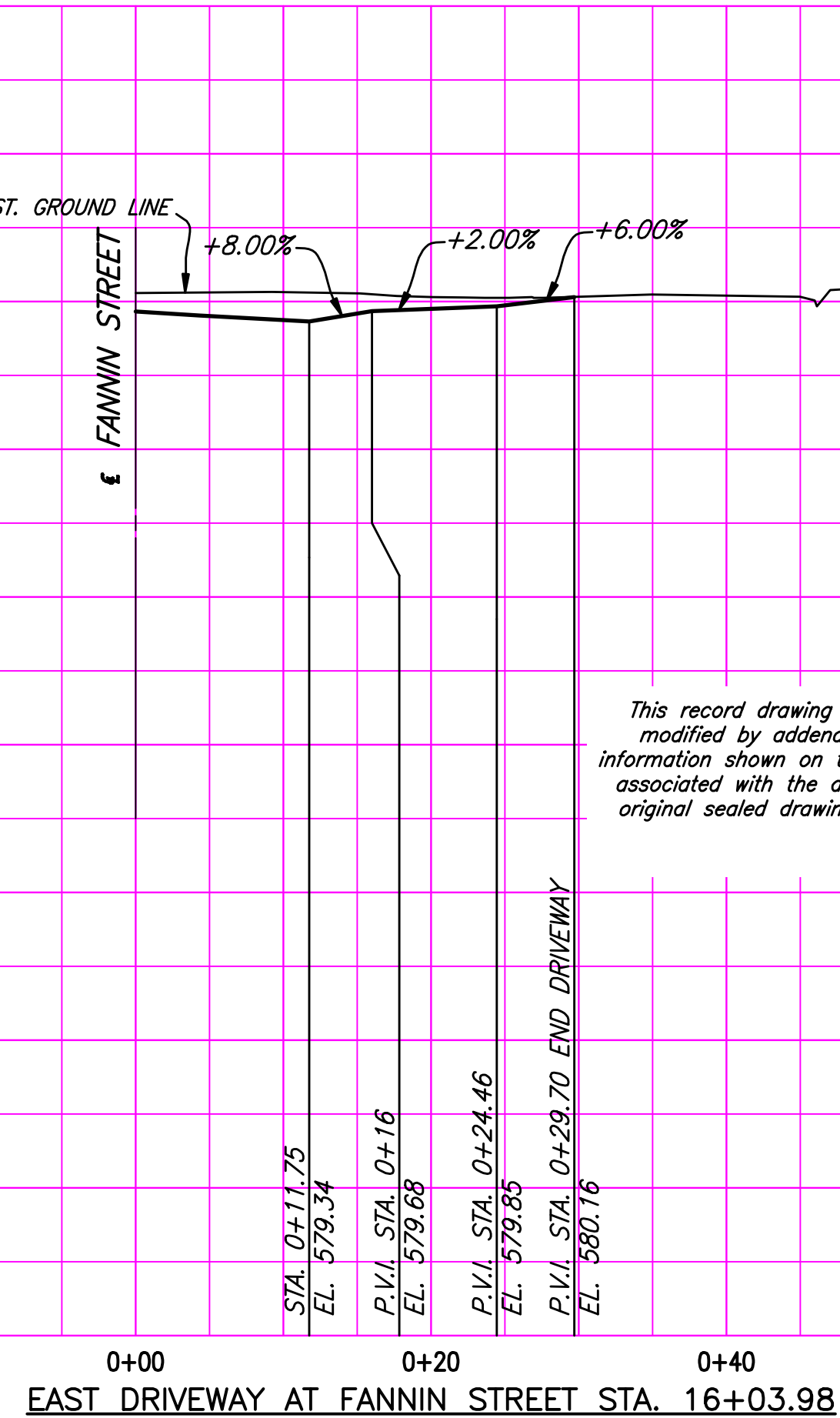
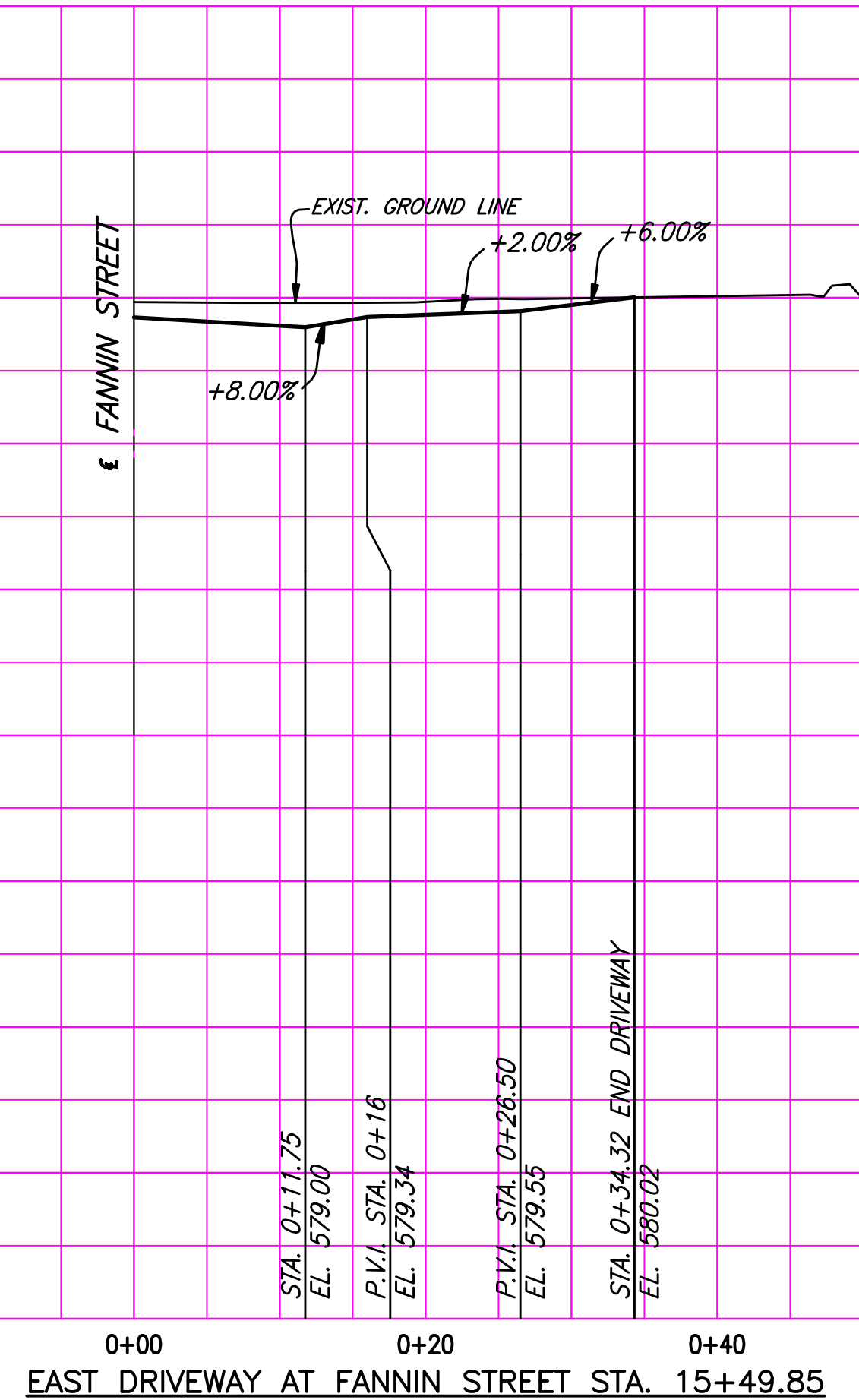
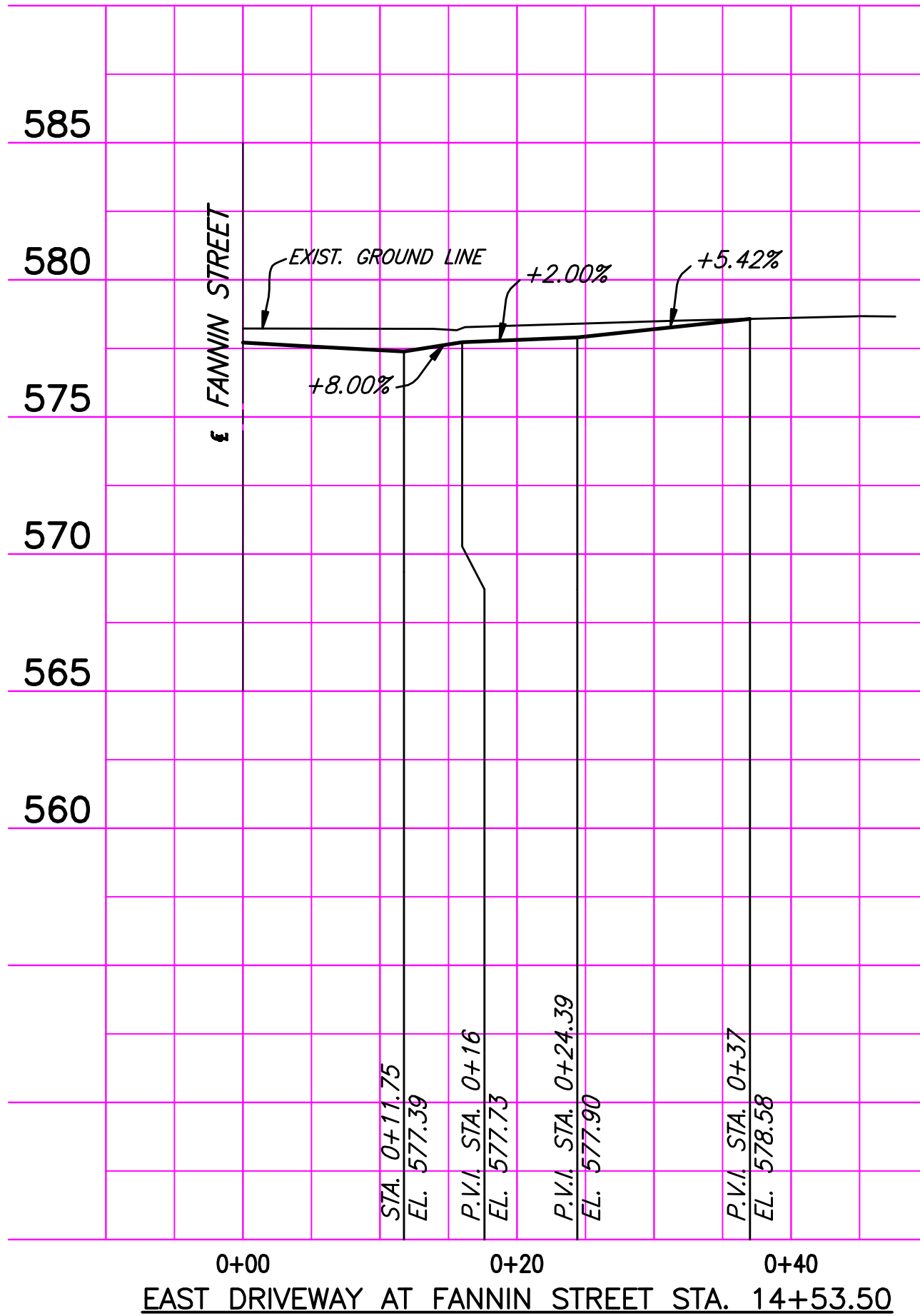
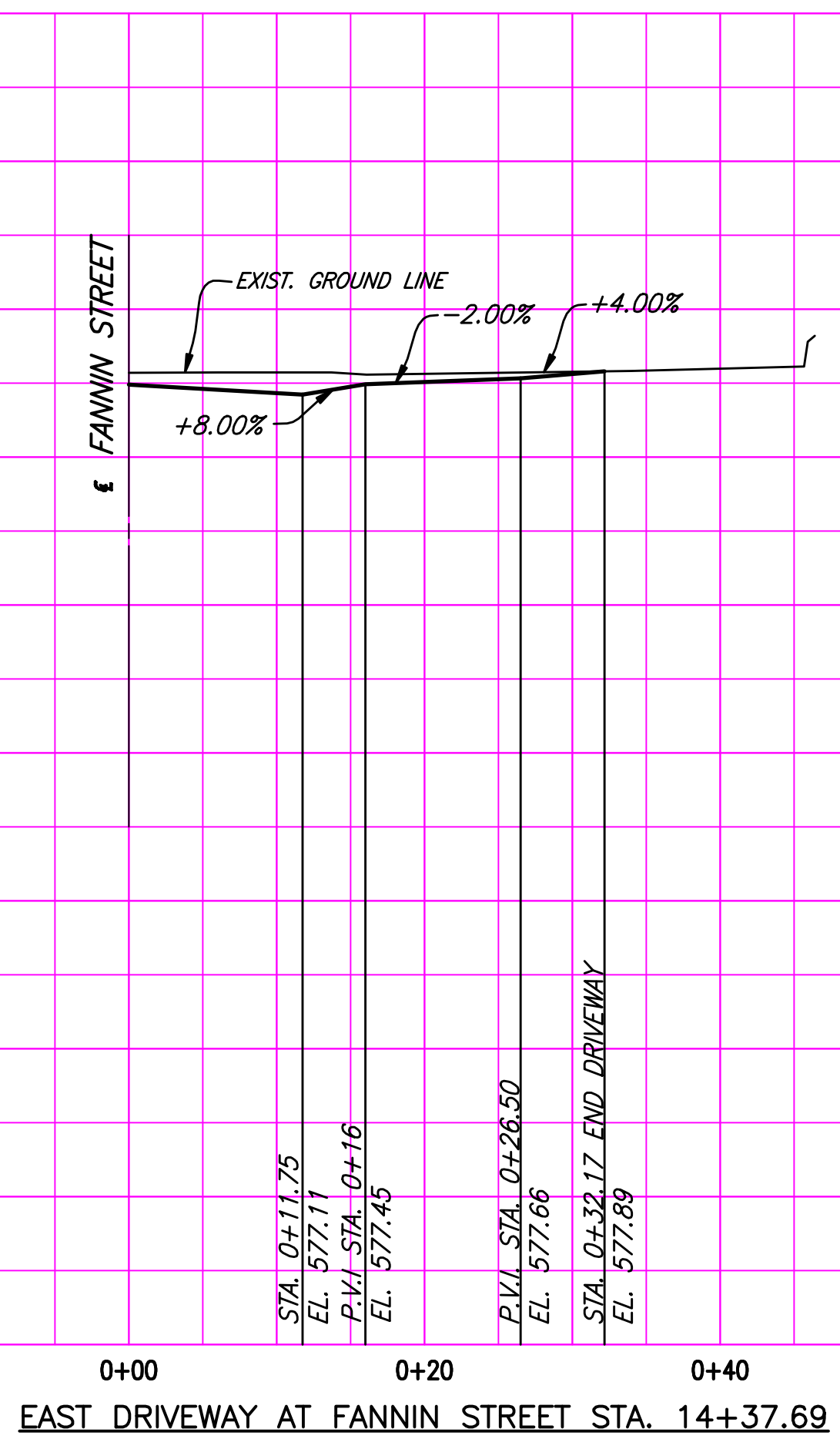
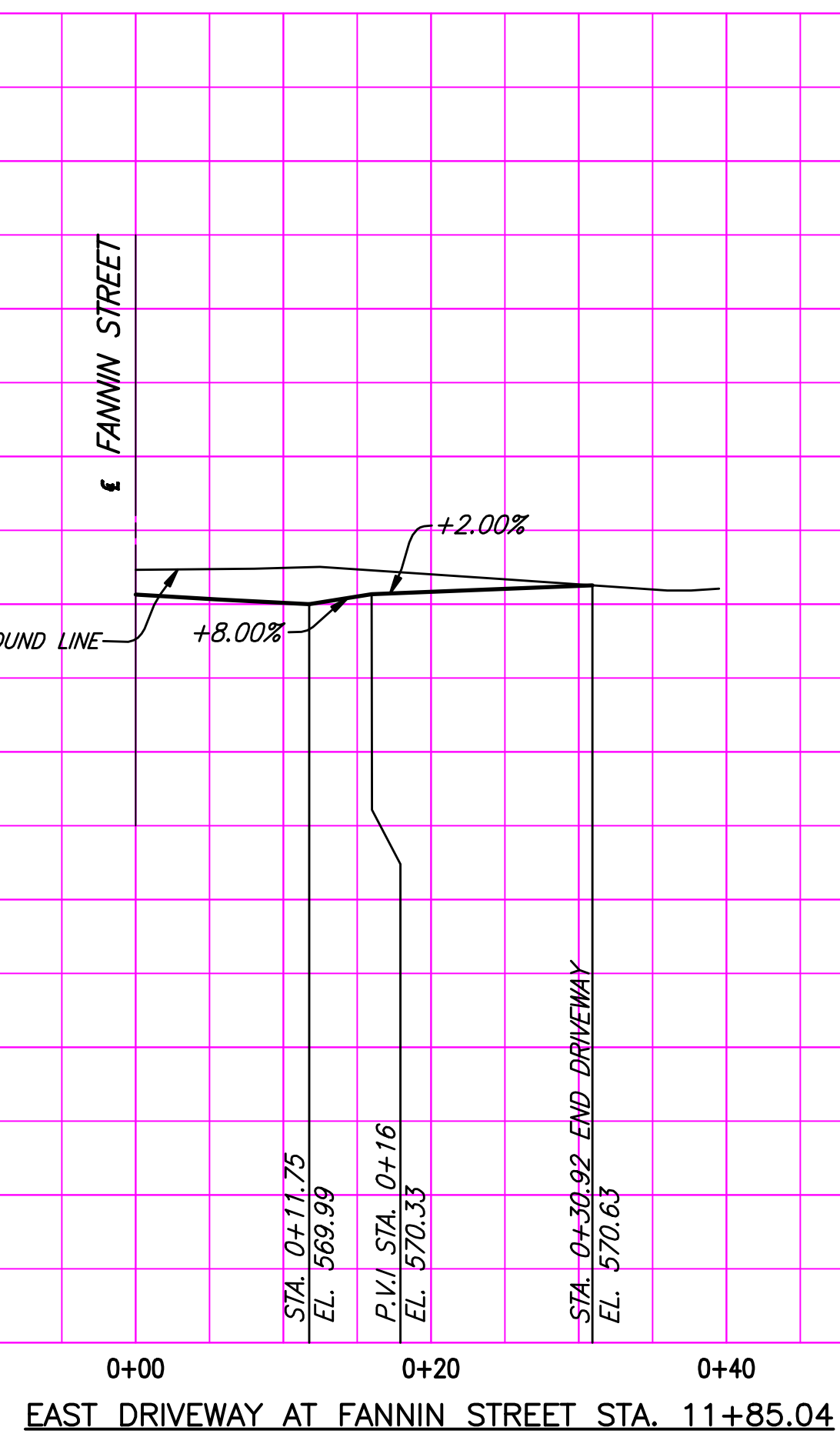
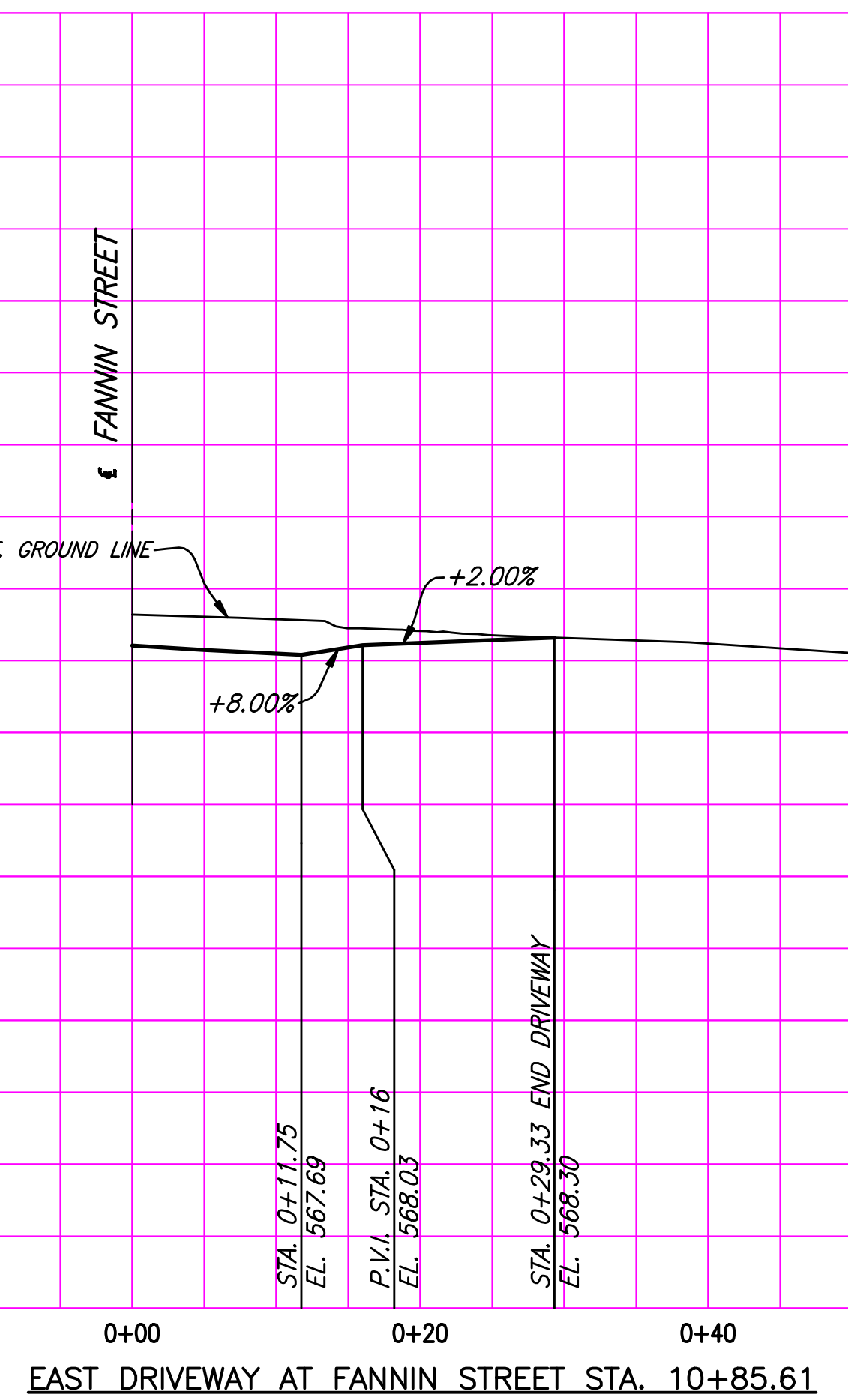
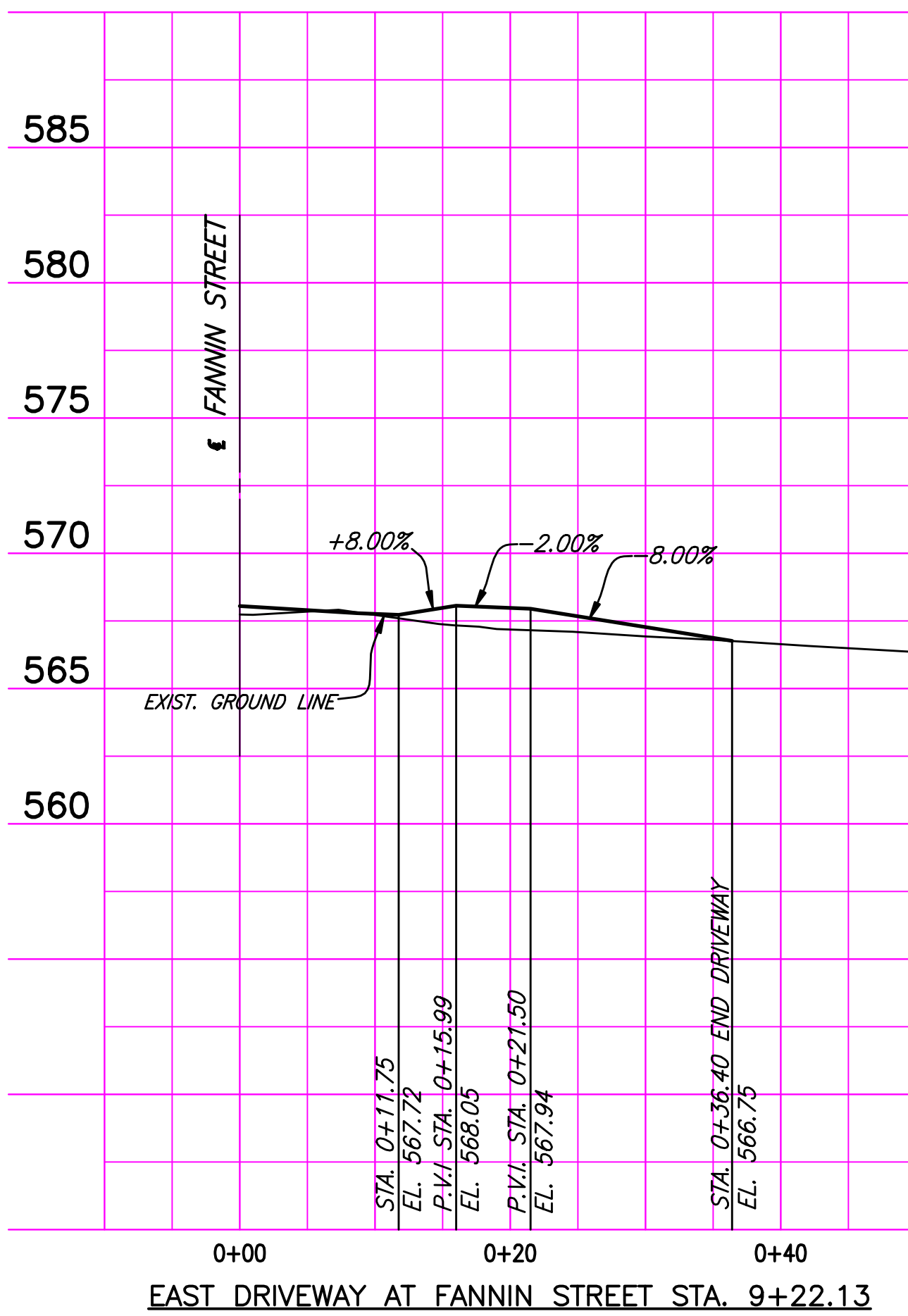


REVISED: 4/22/09 - GDAVIS
 C:\Acad_Labs\Rockwall\20051111\Sheets\20051111-099_DPE-2.dwg
 PLOT SCALE: 1:2.5849
 PLOT STYLE: -----
 PLOTTED BY: GDAVIS ON 4/30/2009



These plans and related specifications were prepared for construction of this specific project only. Reuse of these documents is not permitted without written authorization of Birkhoff, Hendricks, & Conway, L.L.P.

This record drawing is a compilation of the sealed engineering drawing for this project; modified by addenda, change orders and information furnished by the contractor. The information shown on the record drawings that was provided by the contractor or others not associated with the design engineer cannot be verified for accuracy or completeness. This original sealed drawings are on file at the offices of Birkhoff, Hendricks & Conway, L.L.P.
 BY MH DATE 4/25/09

THESE DOCUMENTS ARE FOR BIDDING, CONSTRUCTION, AND PERMIT PURPOSES.
 DATE: 4/19/09
 Matthew Hickey



CITY OF ROCKWALL, TEXAS

FANNIN STREET IMPROVEMENTS
 DRIVEWAY PROFILES - EAST
 STA. 8+50 TO STA. 17+00

BIRKHOFF, HENDRICKS & CONWAY, L.L.P.
 CONSULTING ENGINEERS
 Dallas, Texas

PROJECT ENGINEER: M.H.	PROJECT: 2005-111	SHEET NO. 99
PROJECT TECHNICIAN: J.M.	DATE: June, 2006	