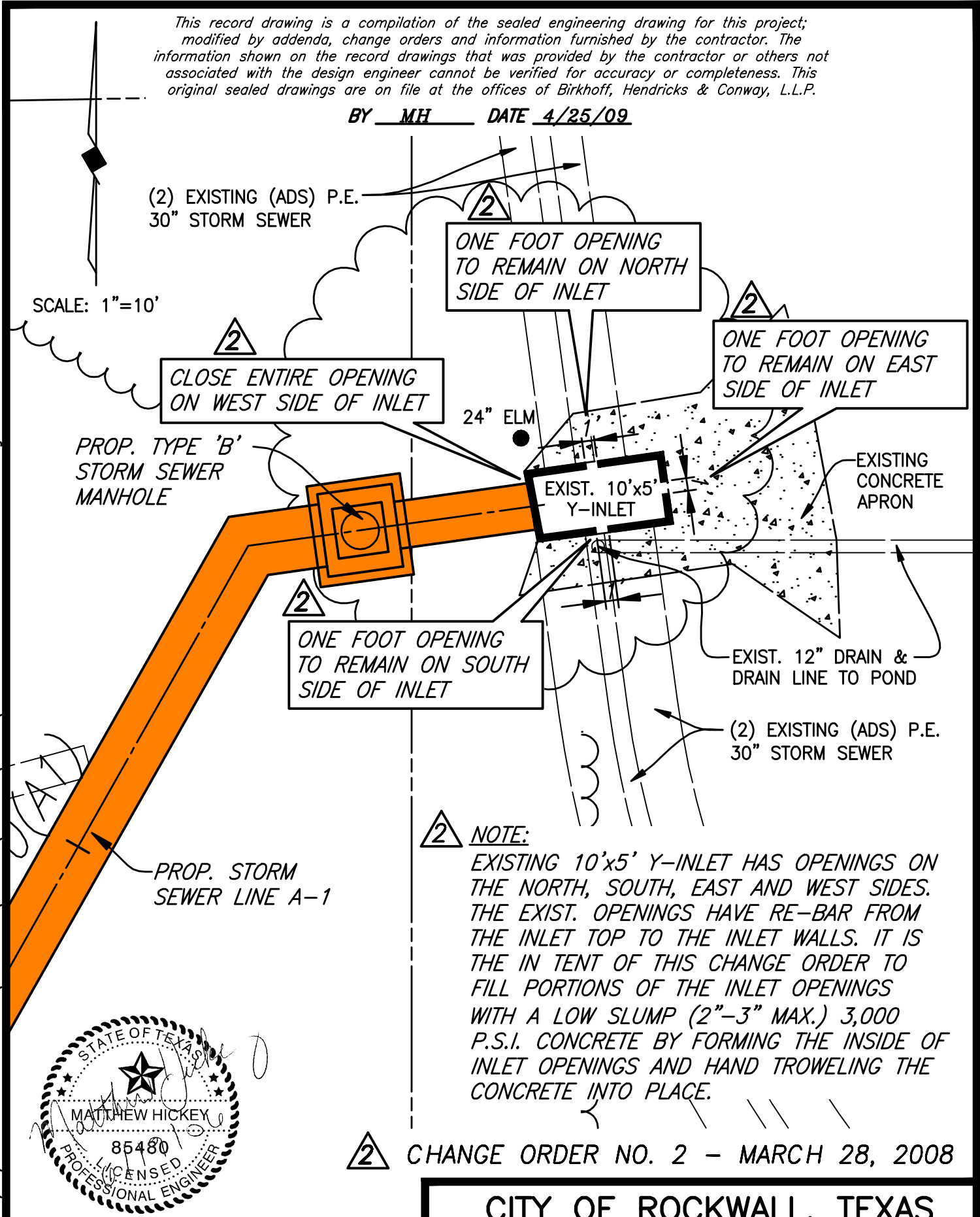


This record drawing is a compilation of the sealed engineering drawing for this project; modified by addenda, change orders and information furnished by the contractor. The information shown on the record drawings that was provided by the contractor or others not associated with the design engineer cannot be verified for accuracy or completeness. This original sealed drawings are on file at the offices of Birkhoff, Hendricks & Conway, L.L.P.

BY MH DATE 4/25/09



SCALE: 1"=10'

(2) EXISTING (ADS) P.E. 30" STORM SEWER

ONE FOOT OPENING TO REMAIN ON NORTH SIDE OF INLET

ONE FOOT OPENING TO REMAIN ON EAST SIDE OF INLET

CLOSE ENTIRE OPENING ON WEST SIDE OF INLET

PROP. TYPE 'B' STORM SEWER MANHOLE

24" ELM

EXIST. 10'x5' Y-INLET

EXISTING CONCRETE APRON

ONE FOOT OPENING TO REMAIN ON SOUTH SIDE OF INLET

EXIST. 12" DRAIN & DRAIN LINE TO POND

(2) EXISTING (ADS) P.E. 30" STORM SEWER

PROP. STORM SEWER LINE A-1

NOTE:
EXISTING 10'x5' Y-INLET HAS OPENINGS ON THE NORTH, SOUTH, EAST AND WEST SIDES. THE EXIST. OPENINGS HAVE RE-BAR FROM THE INLET TOP TO THE INLET WALLS. IT IS THE INTENT OF THIS CHANGE ORDER TO FILL PORTIONS OF THE INLET OPENINGS WITH A LOW SLUMP (2"-3" MAX.) 3,000 P.S.I. CONCRETE BY FORMING THE INSIDE OF INLET OPENINGS AND HAND TROWELING THE CONCRETE INTO PLACE.

CHANGE ORDER NO. 2 - MARCH 28, 2008



CITY OF ROCKWALL, TEXAS

BIRKHOFF, HENDRICKS & CONWAY, L.L.P.
CONSULTING ENGINEERS
7502 GREENVILLE AVE., #220
DALLAS, TEXAS 75231 214-361-7900

**FANNIN STREET IMPROVEMENTS
EXIST. Y-INLET MODIFICATIONS**

SHEET NO.
48A

REVISED: 4/28/09 - GDAVIS C:\Acad_Jobs\Rockwall\20051111\Sheets\20051111-048A_STMSEW_A-1_CO2.dwg

PLOT SCALE: 1:10

PLOT STYLE: 22X34.ctb

PLOTTED BY: GDAVIS ON 4/30/2009