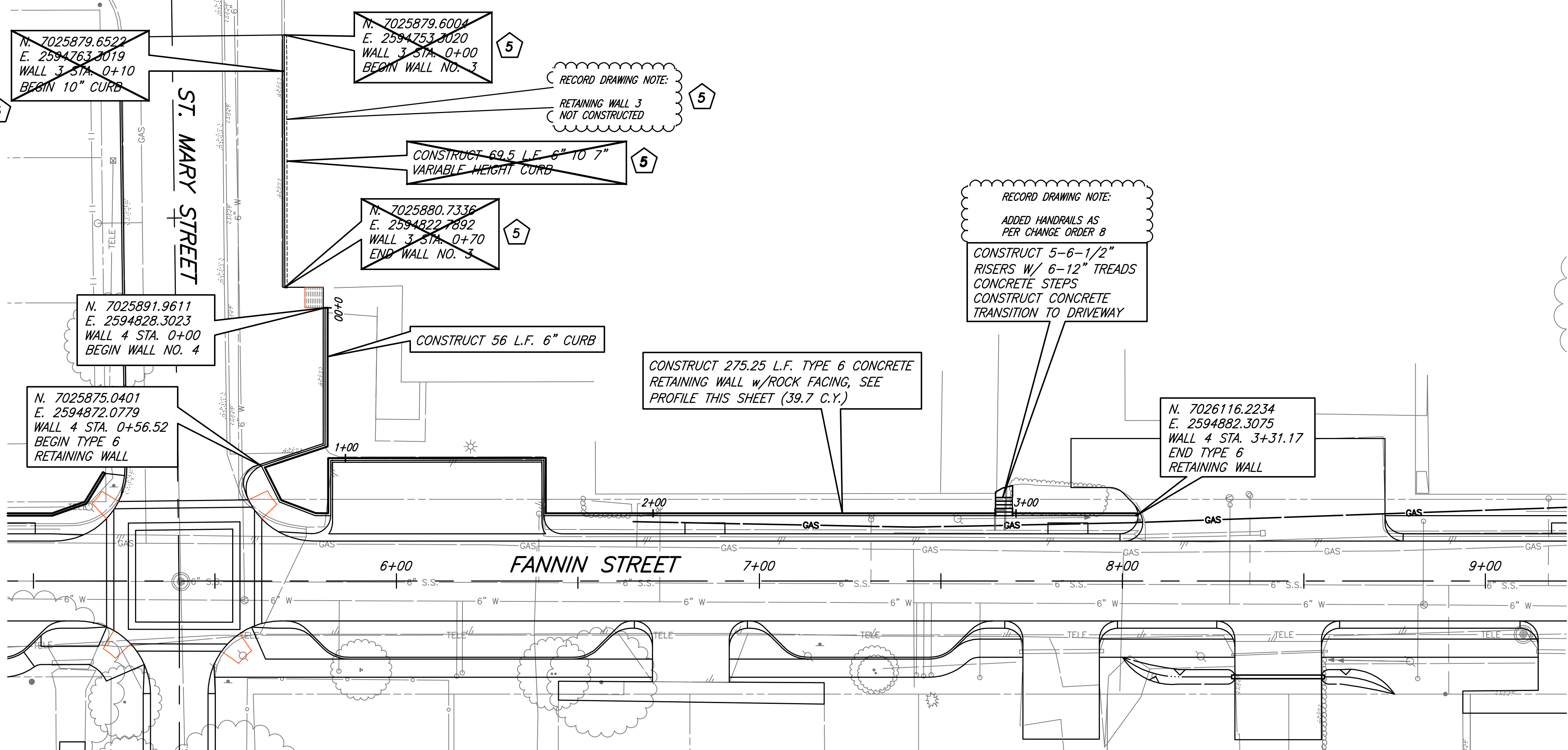
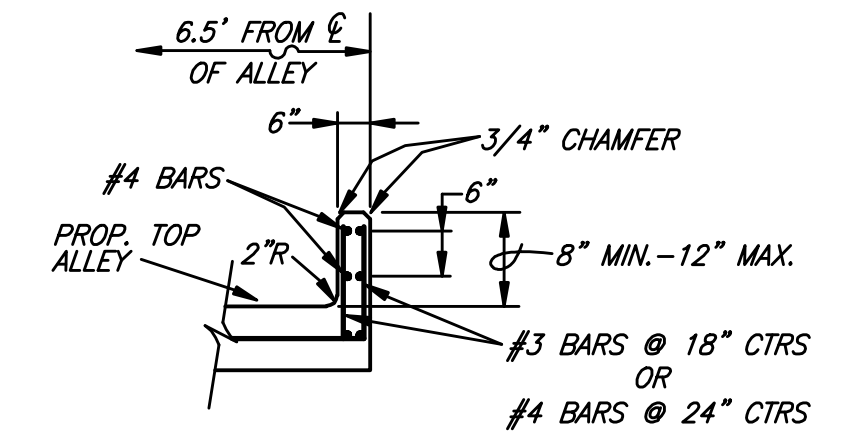


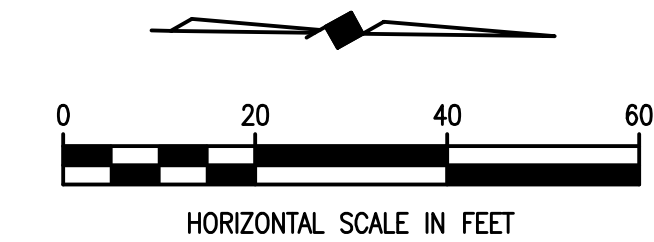
REVISIONS: 4/23/09 - GDAVIS
 C:\Acad_Labs\Rockwall\2005111\Drawings\2005111-024_RETAINING_WALL2.dwg
 PLOT STYLE: 22X34.ctb
 PLOTTED BY: GDAVIS ON 4/30/2009



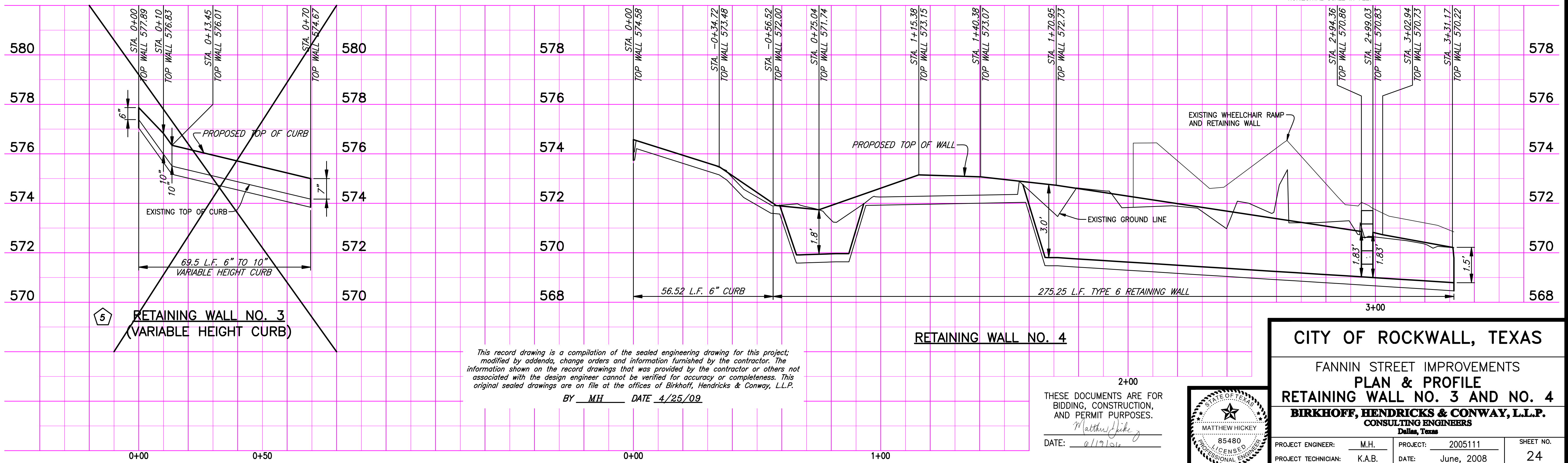
- NOTES:**
- TYPE 6 RETAINING WALLS SHOULD BE BASED ON FORM PATTERN ASHLAR STONE MULTI CAST (ABS) CATALOG NUMBER 330M.
 - QUANTITY FOR TYPE 6 RETAINING WALL INCLUDES ASSOCIATED SIDEWALK, BARRIER FREE RAMPS SHALL BE PAID SEPARATELY ON A PER EACH BASIS.



PROPOSED VARIABLE HEIGHT CURB



These plans and related specifications were prepared for construction of this specific project only. Reuse of these documents is not permitted without written authorization of Birkhoff, Hendricks, & Conway, L.L.P.



This record drawing is a compilation of the sealed engineering drawing for this project; modified by addenda, change orders and information furnished by the contractor. The information shown on the record drawings that was provided by the contractor or others not associated with the design engineer cannot be verified for accuracy or completeness. This original sealed drawings are on file at the offices of Birkhoff, Hendricks & Conway, L.L.P.
 BY MH DATE 4/25/09

2+00
 THESE DOCUMENTS ARE FOR BIDDING, CONSTRUCTION, AND PERMIT PURPOSES.
 Matthew Hickey
 DATE: 4/19/09



CITY OF ROCKWALL, TEXAS

FANNIN STREET IMPROVEMENTS
PLAN & PROFILE
RETAINING WALL NO. 3 AND NO. 4
BIRKHOFF, HENDRICKS & CONWAY, L.L.P.
 CONSULTING ENGINEERS
 Dallas, Texas

PROJECT ENGINEER: M.H.	PROJECT: 2005111	SHEET NO. 24
PROJECT TECHNICIAN: K.A.B.	DATE: June, 2008	