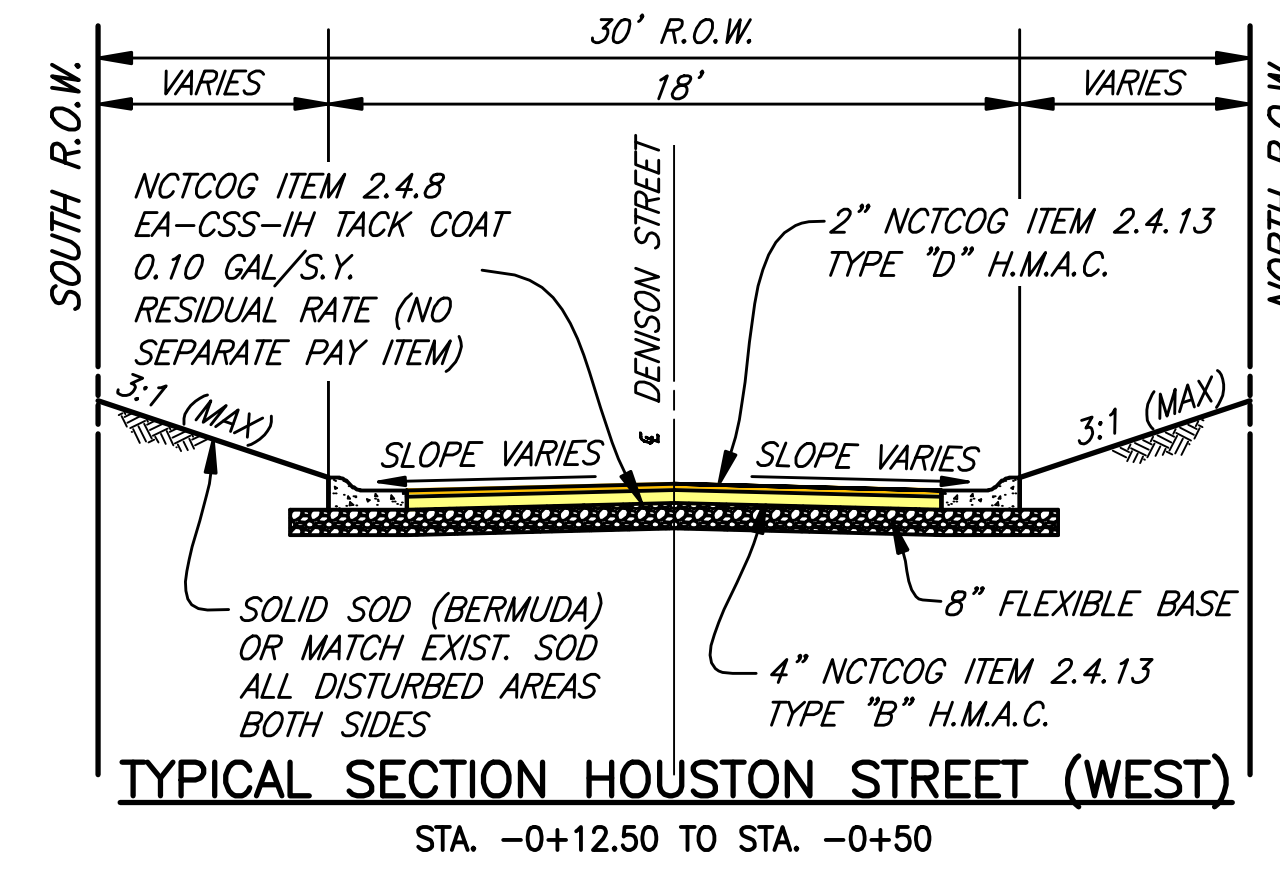
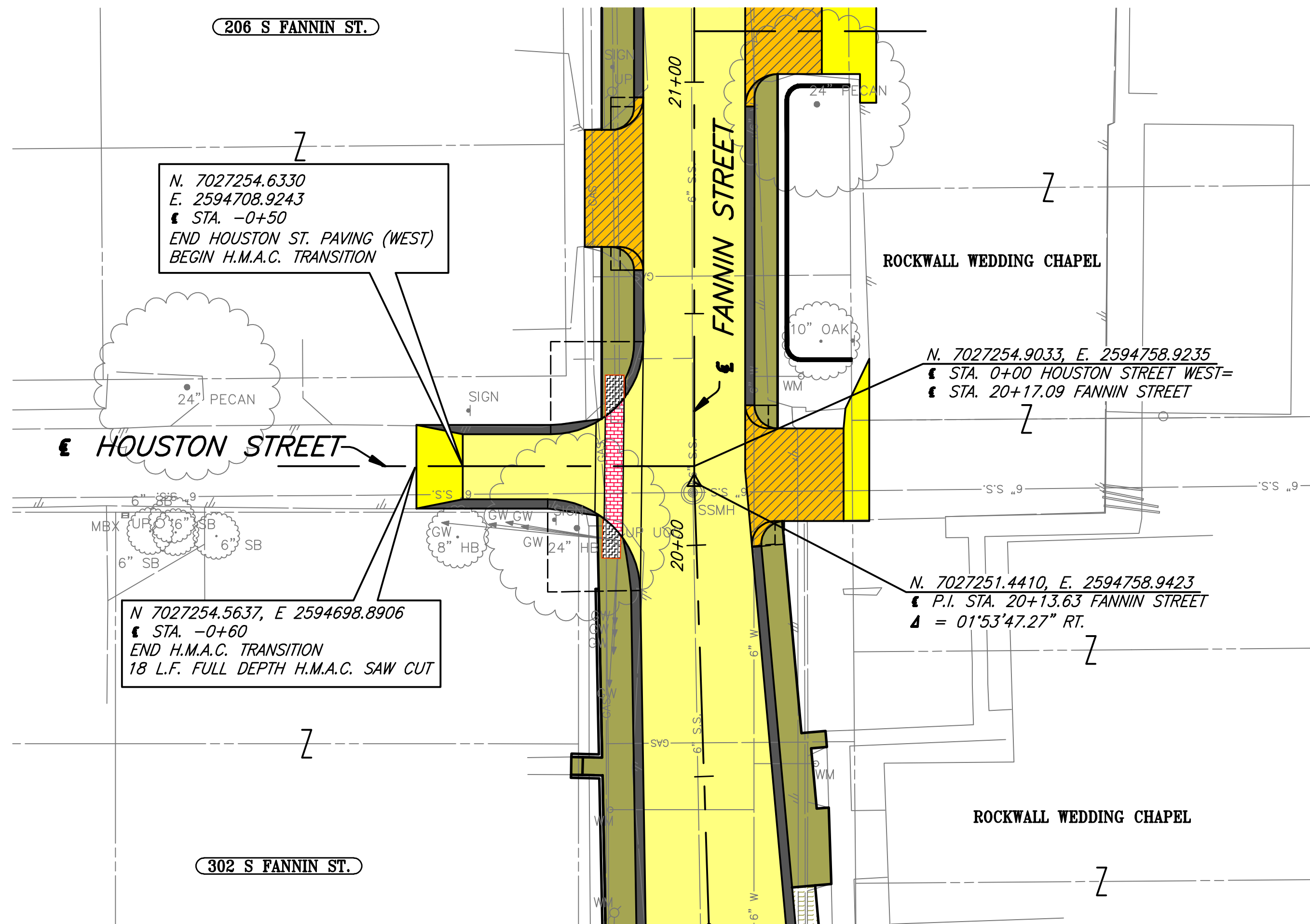
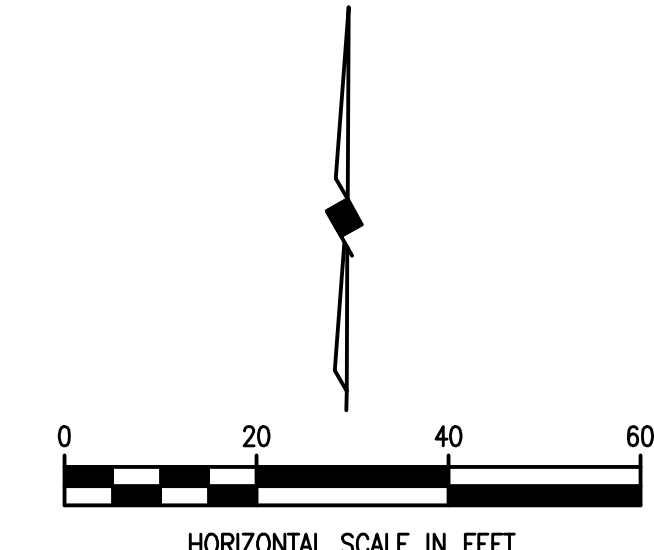


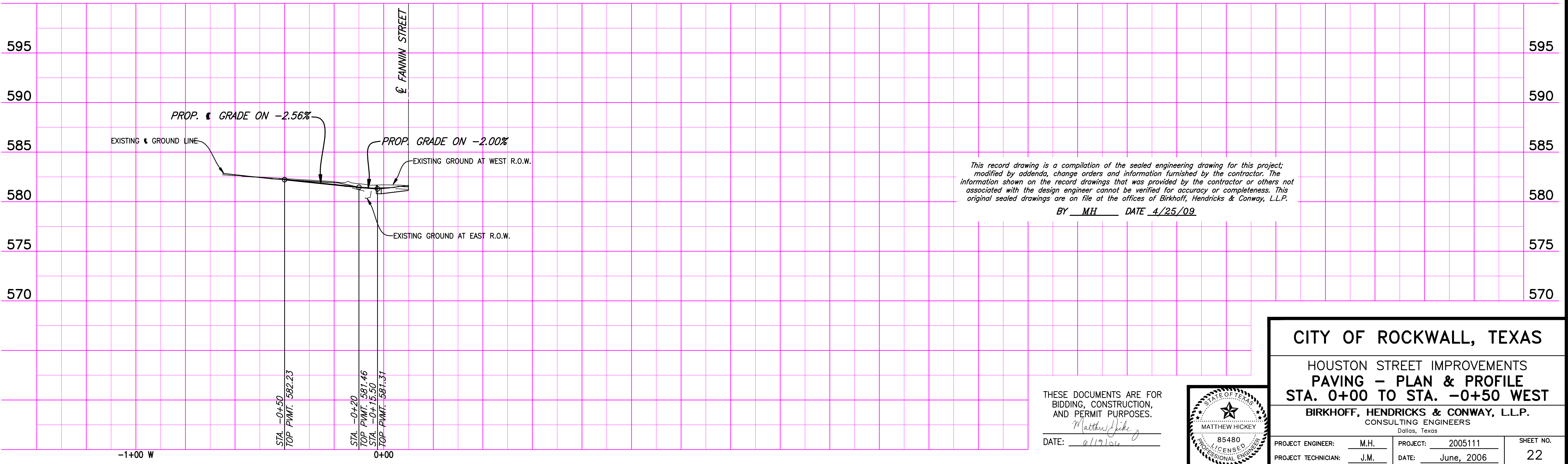
REVISION: 4/23/09 - GDAVIS  
 C:\Acad\Jobs\Rockwall\20051111\Sheets\20051111-022-PP11.dwg  
 PLOT SCALE: 1:20  
 PLOT STYLE: 22x34.ctb  
 PLOTTED BY: GDAVIS ON 4/30/2009



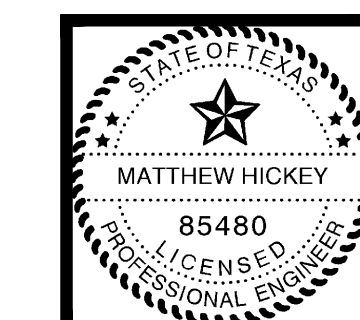
- LEGEND**
- CONSTRUCT H.M.A.C. PAVEMENT
  - CONST. REINF. CONC. CURB & GUTTER OR CONCRETE PARKING NICHE W/ VALLEY GUTTER & MONO. CONC. CURB
  - CONSTRUCT REINF. CONC. SIDEWALK
  - CONSTRUCT H.M.A.C. TRANSITION
  - CONSTRUCT BARRIER FREE RAMP
  - CONSTRUCT BRICK PAVERS
  - CONSTRUCT REINF. CONC. DRIVEWAY
  - CONSTRUCT 8" REINF. CONC. PVMT.
  - PROPOSED TREE REMOVAL



These plans and related specifications were prepared for construction of this specific project only. Reuse of these documents is not permitted without written authorization of Birkhoff, Hendricks, & Conway, L.L.P.



THESE DOCUMENTS ARE FOR BIDDING, CONSTRUCTION, AND PERMIT PURPOSES.  
 DATE: 4/25/09



**CITY OF ROCKWALL, TEXAS**

HOUSTON STREET IMPROVEMENTS  
**PAVING - PLAN & PROFILE**  
 STA. 0+00 TO STA. -0+50 WEST

**BIRKHOFF, HENDRICKS & CONWAY, L.L.P.**  
 CONSULTING ENGINEERS  
 Dallas, Texas

PROJECT ENGINEER: M.H.	PROJECT: 2005111	SHEET NO. 22
PROJECT TECHNICIAN: J.M.	DATE: June, 2006	