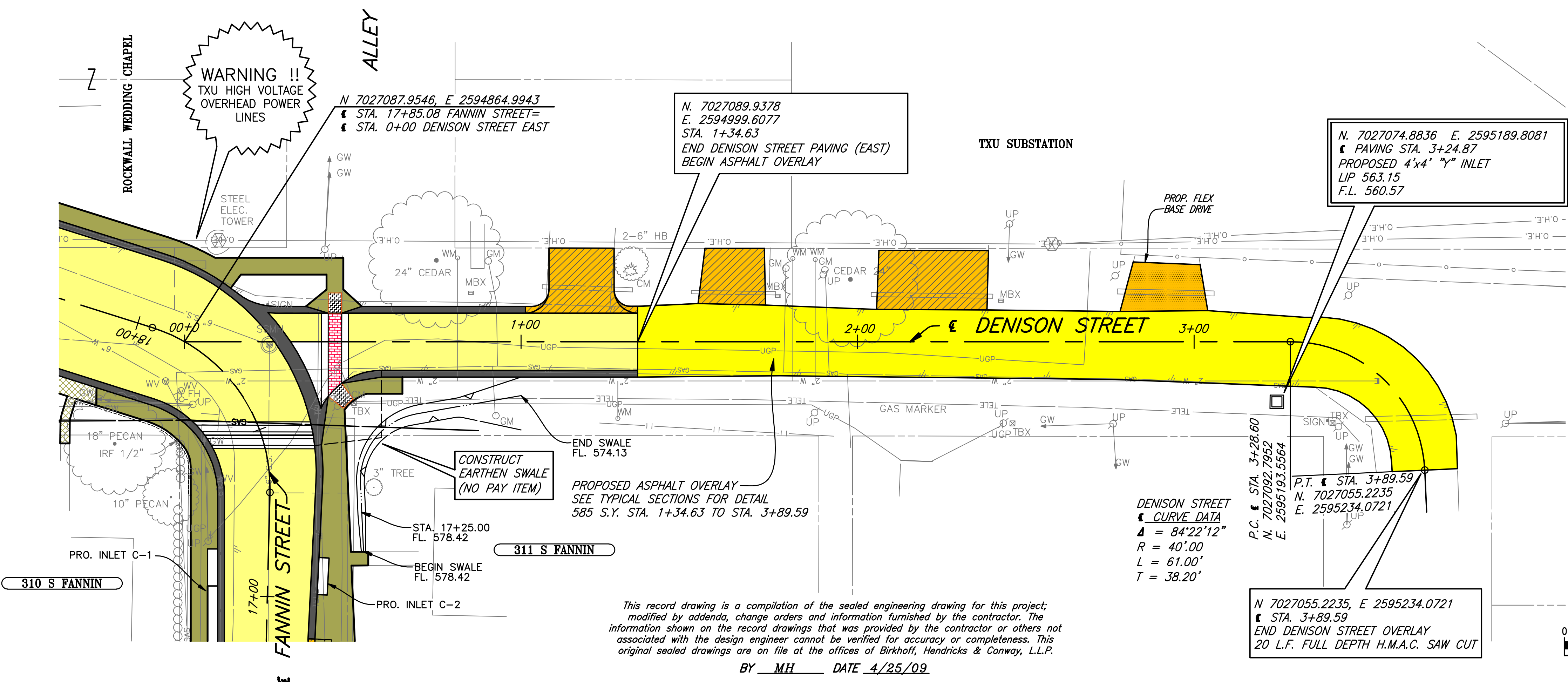


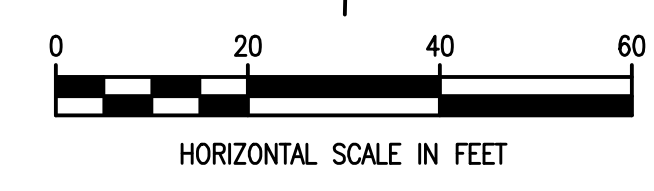
REvised: 4/23/09 - GDAVIS
 C:\Acad\Jobs\Rockwall\20051111-Sheets\20051111-021-PP10.dwg
 PLOT SCALE: 1:20
 PLOT STYLE: 22X34.ctb
 PLOTTED BY: GDAVIS ON 4/30/2009



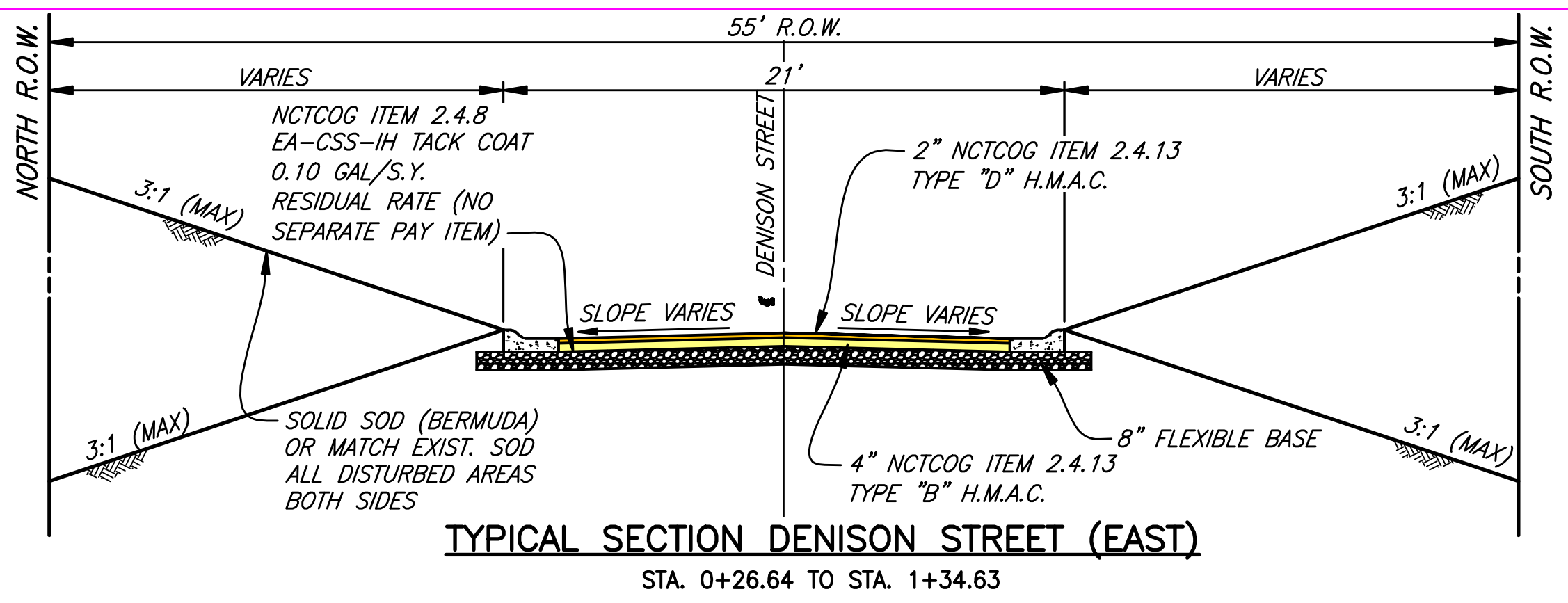
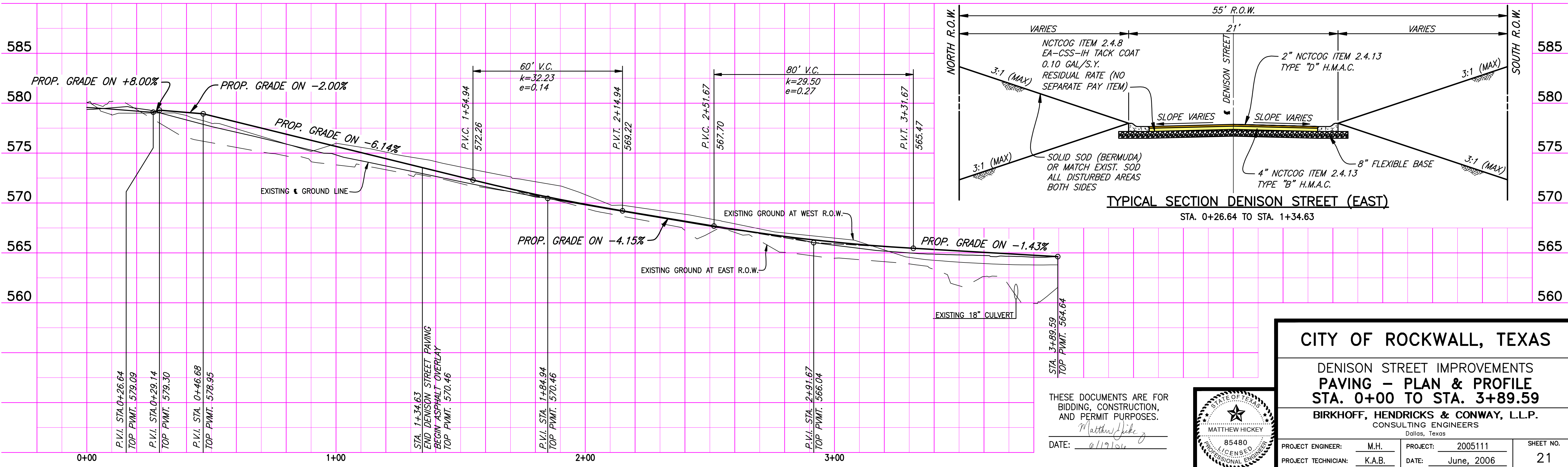
- LEGEND**
- CONSTRUCT H.M.A.C. PAVEMENT
 - CONST. REINF. CONC. CURB & GUTTER OR CONCRETE PARKING NICHE W/ VALLEY GUTTER & MONO. CONC. CURB
 - CONSTRUCT REINF. CONC. SIDEWALK
 - FIELD CHANGE NO. 8 SIDEWALK REVISIONS
 - CONSTRUCT H.M.A.C. TRANSITION
 - CONSTRUCT BARRIER FREE RAMP
 - CONSTRUCT BRICK PAVERS
 - CONSTRUCT REINF. CONC. DRIVEWAY
 - CONSTRUCT FLEXIBLE BASE DRIVEWAY
 - CONSTRUCT 8" REINF. CONC. PVMT.
 - PROPOSED TREE REMOVAL

This record drawing is a compilation of the sealed engineering drawing for this project; modified by addenda, change orders and information furnished by the contractor. The information shown on the record drawings that was provided by the contractor or others not associated with the design engineer cannot be verified for accuracy or completeness. This original sealed drawings are on file at the offices of Birkhoff, Hendricks & Conway, L.L.P.

BY MH DATE 4/25/09



These plans and related specifications were prepared for construction of this specific project only. Reuse of these documents is not permitted without written authorization of Birkhoff, Hendricks, & Conway, L.L.P.



THESE DOCUMENTS ARE FOR BIDDING, CONSTRUCTION, AND PERMIT PURPOSES.

Matthew Hickey
 DATE: 4/19/09



CITY OF ROCKWALL, TEXAS

**DENISON STREET IMPROVEMENTS
 PAVING - PLAN & PROFILE
 STA. 0+00 TO STA. 3+89.59**

BIRKHOFF, HENDRICKS & CONWAY, L.L.P.
 CONSULTING ENGINEERS
 Dallas, Texas

PROJECT ENGINEER: M.H.	PROJECT: 2005111	SHEET NO. 21
PROJECT TECHNICIAN: K.A.B.	DATE: June, 2006	