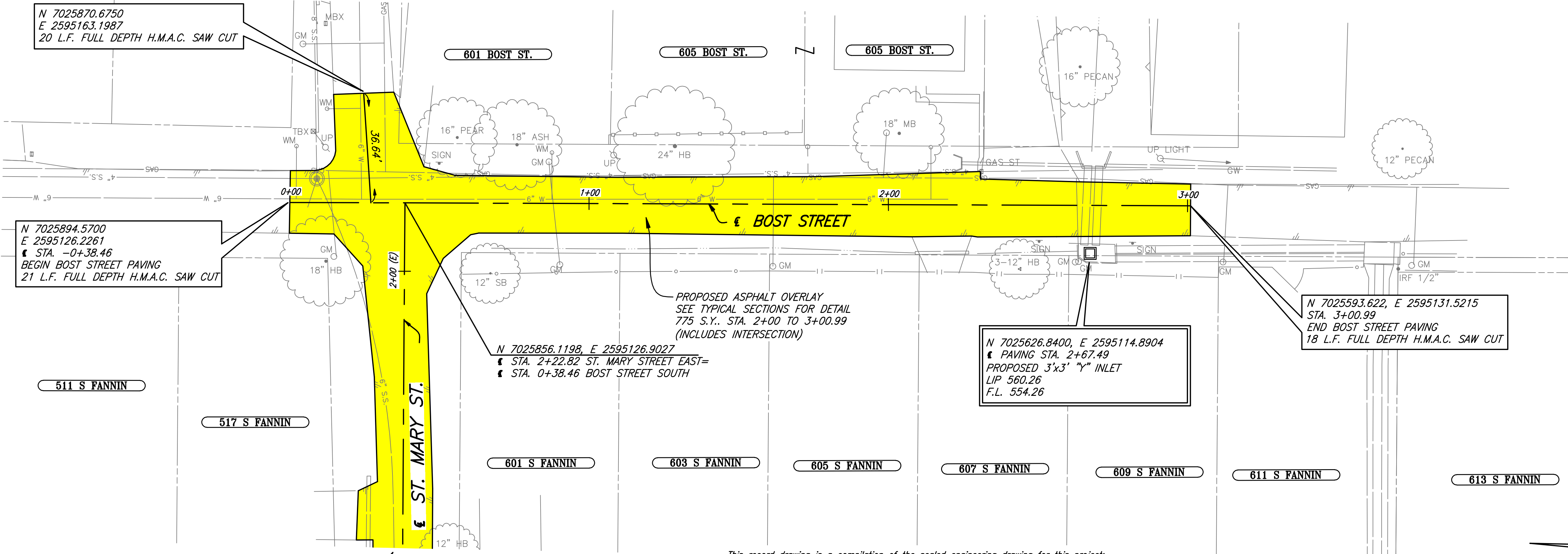


REVISIONS: 4/23/09 - GDAVIS
 C:\Acad_Jobs\Rockwall\20051111\Sheets\20051111-018_PP7A.dwg
 PLOT SCALE: 1:20
 PLOTTED BY: GDAVIS ON 4/30/2009



- LEGEND**
- CONSTRUCT H.M.A.C. PAVEMENT
 - CONST. REINF. CONC. CURB & GUTTER OR CONCRETE PARKING NICHE W/ VALLEY GUTTER & MONO. CONC. CURB
 - CONSTRUCT REINF. CONC. SIDEWALK
 - CONSTRUCT H.M.A.C. TRANSITION
 - CONSTRUCT BARRIER FREE RAMP
 - CONSTRUCT BRICK PAVERS
 - CONSTRUCT REINF. CONC. DRIVEWAY
 - CONSTRUCT 8" REINF. CONC. PVMT.
 - PROPOSED TREE REMOVAL

N 7025870.6750
E 2595163.1987
20 L.F. FULL DEPTH H.M.A.C. SAW CUT

N 7025894.5700
E 2595126.2261
STA. -0+38.46
BEGIN BOST STREET PAVING
21 L.F. FULL DEPTH H.M.A.C. SAW CUT

N 7025856.1198, E 2595126.9027
STA. 2+22.82 ST. MARY STREET EAST=
STA. 0+38.46 BOST STREET SOUTH

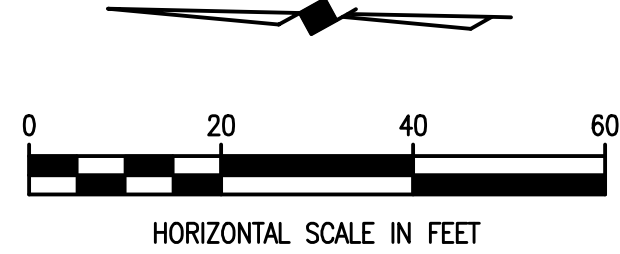
N 7025626.8400, E 2595114.8904
PAVING STA. 2+67.49
PROPOSED 3'x3' "Y" INLET
LIP 560.26
F.L. 554.26

N 7025593.622, E 2595131.5215
STA. 3+00.99
END BOST STREET PAVING
18 L.F. FULL DEPTH H.M.A.C. SAW CUT

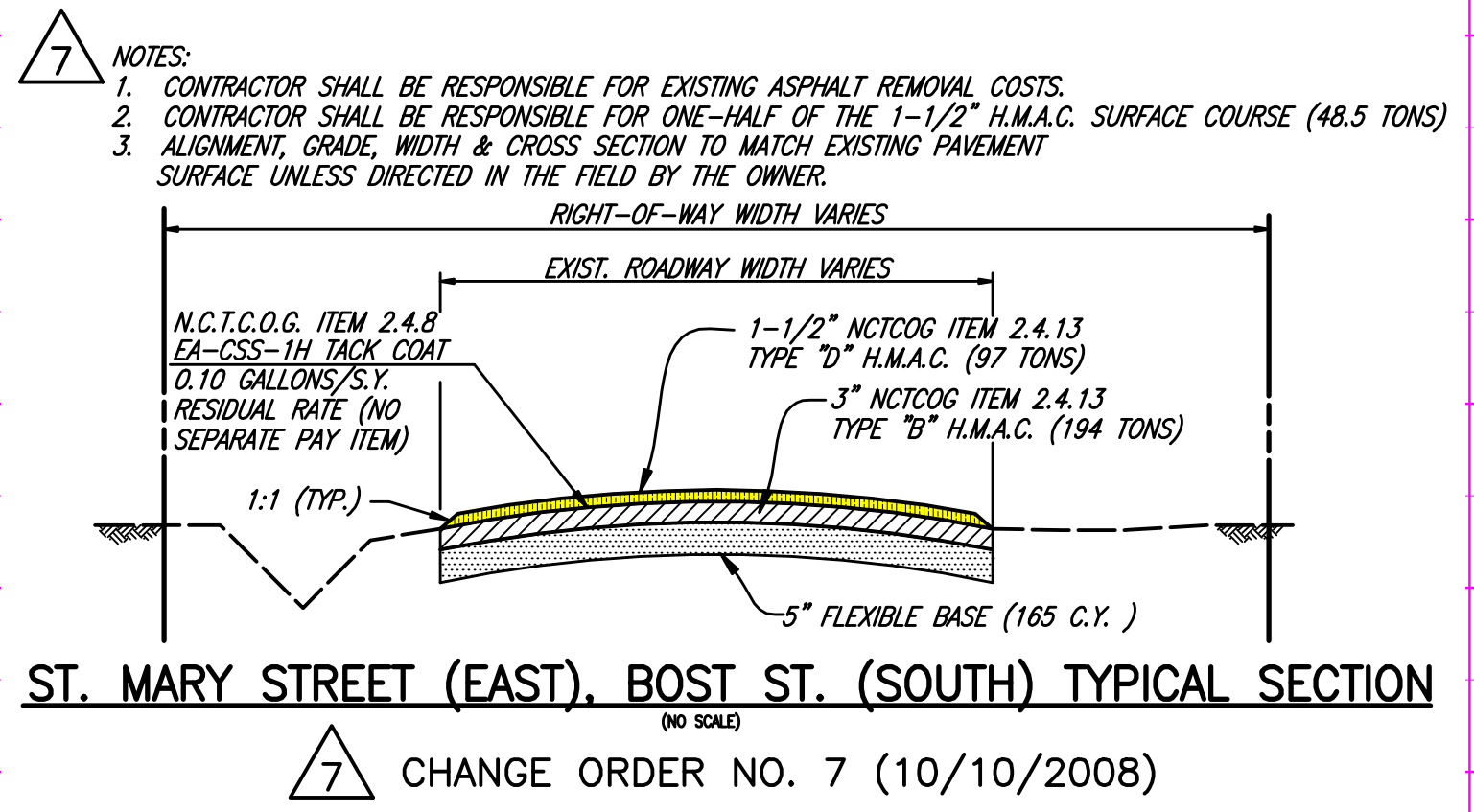
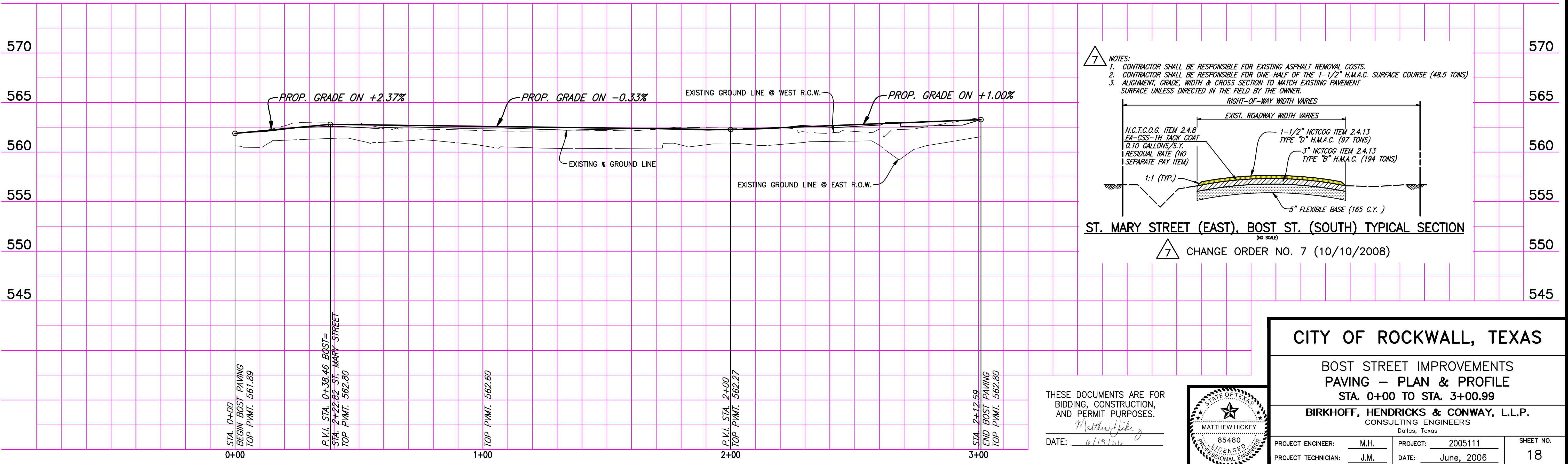
PROPOSED ASPHALT OVERLAY
SEE TYPICAL SECTIONS FOR DETAIL
775 S.Y. STA. 2+00 TO 3+00.99
(INCLUDES INTERSECTION)

SEE SHEET 17 FOR ST MARY STREET
PAVING PLAN AND PROFILE

This record drawing is a compilation of the sealed engineering drawing for this project, modified by addenda, change orders and information furnished by the contractor. The information shown on the record drawings that was provided by the contractor or others not associated with the design engineer cannot be verified for accuracy or completeness. This original sealed drawings are on file at the offices of Birkhoff, Hendricks & Conway, L.L.P.
BY MH DATE 4/25/09



These plans and related specifications were prepared for construction of this specific project only. Reuse of these documents is not permitted without written authorization of Birkhoff, Hendricks, & Conway, L.L.P.



THESE DOCUMENTS ARE FOR
BIDDING, CONSTRUCTION,
AND PERMIT PURPOSES.
Matthew Hickey
DATE: 4/19/09



CITY OF ROCKWALL, TEXAS

**BOST STREET IMPROVEMENTS
PAVING - PLAN & PROFILE
STA. 0+00 TO STA. 3+00.99**

BIRKHOFF, HENDRICKS & CONWAY, L.L.P.
CONSULTING ENGINEERS
Dallas, Texas

PROJECT ENGINEER: M.H.	PROJECT: 2005111	SHEET NO. 18
PROJECT TECHNICIAN: J.M.	DATE: June, 2006	