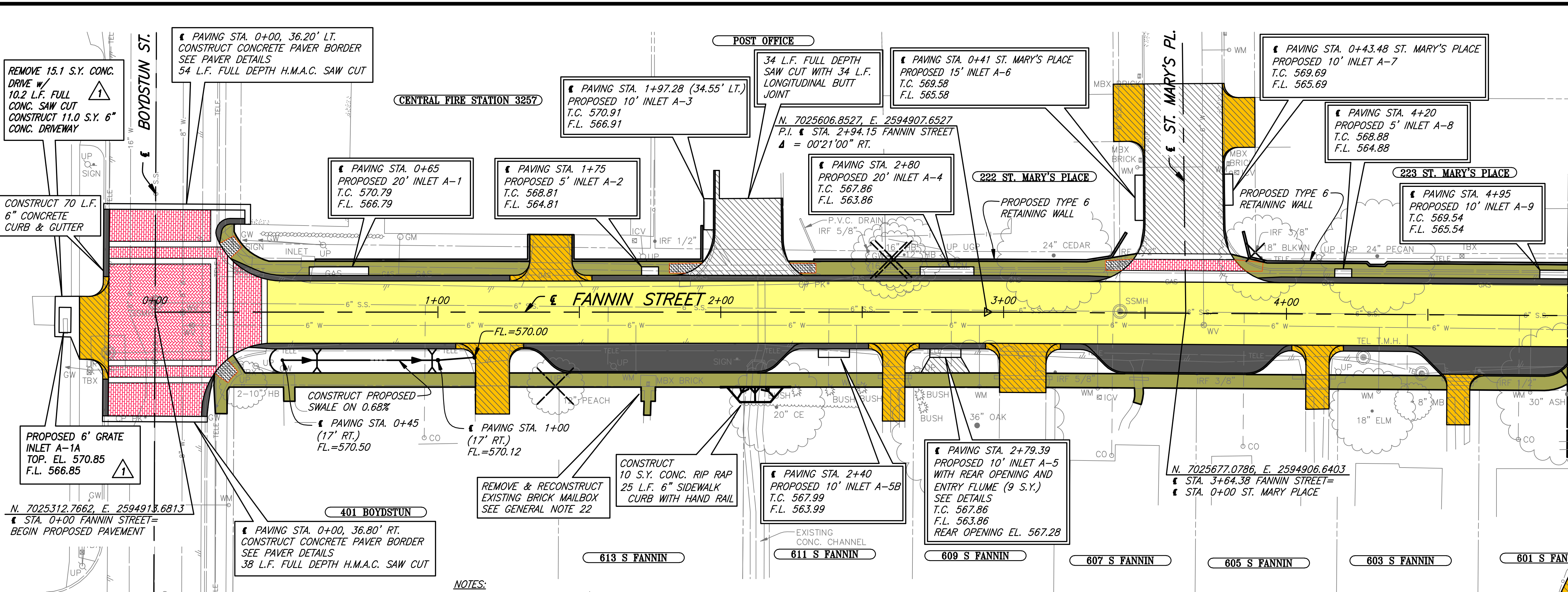
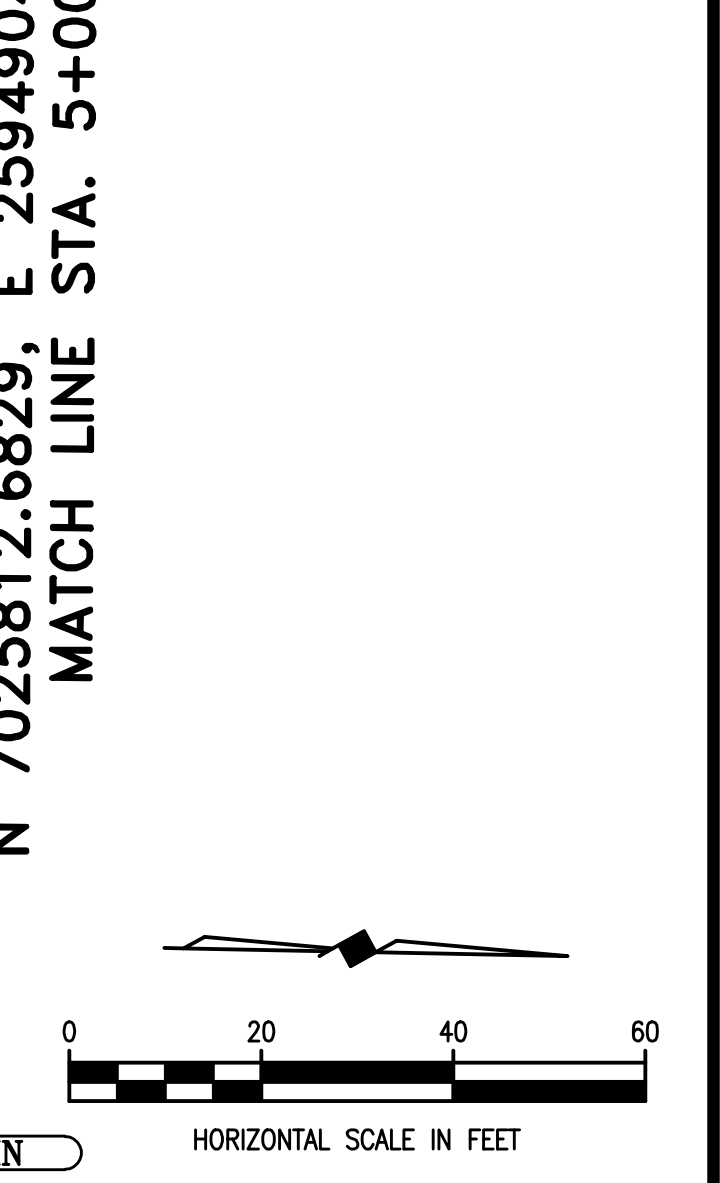


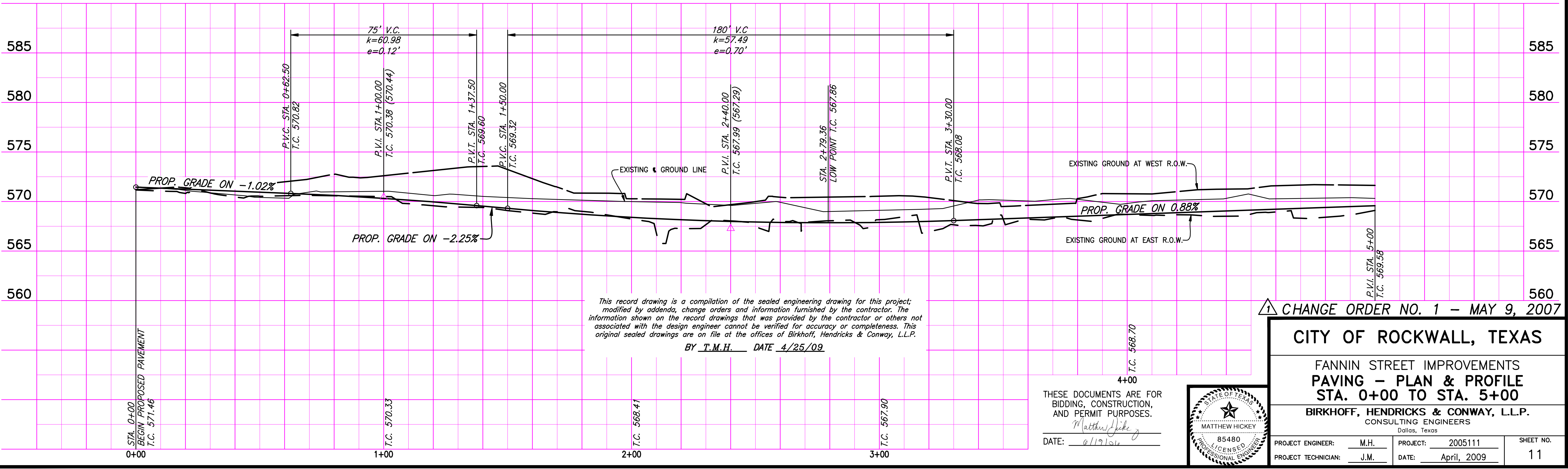
REVISIONS: 4/23/09 - GDAVIS  
 C:\Acad\_Jobs\Rockwall\2005111\Sheets\2005111-011\_P1.dwg  
 PLOT SCALE: 1:20  
 PLOT STYLE: 22X34.ctb  
 PLOTTED BY: GDAVIS ON 4/30/2009



- LEGEND**
- CONSTRUCT H.M.A.C. PAVEMENT
  - CONST. REINF. CONC. CURB & GUTTER OR CONCRETE PARKING NICHE W/ VALLEY GUTTER & MONO. CONC. CURB
  - CONSTRUCT REINF. CONC. SIDEWALK
  - CONSTRUCT H.M.A.C. TRANSITION
  - CONSTRUCT BARRIER FREE RAMP
  - CONSTRUCT BRICK PAVERS
  - CONSTRUCT REINF. CONC. DRIVEWAY
  - CONSTRUCT 8\"
  - PROPOSED TREE REMOVAL



- NOTES:**
1. REFER TO COORDINATE/DIMENSION SHEETS FOR FANNIN STREET GEOMETRIC LAYOUT OF PROPOSED ROADWAY.
  2. CONSTRUCTION OF SWALES SHALL BE SUBSIDIARY TO UNCLASSIFIED STREET EXCAVATION.



THESE DOCUMENTS ARE FOR BIDDING, CONSTRUCTION, AND PERMIT PURPOSES.  
 DATE: 4/19/09



CHANGE ORDER NO. 1 - MAY 9, 2007

**CITY OF ROCKWALL, TEXAS**

**FANNIN STREET IMPROVEMENTS  
 PAVING - PLAN & PROFILE  
 STA. 0+00 TO STA. 5+00**

**BIRKHOFF, HENDRICKS & CONWAY, L.L.P.**  
 CONSULTING ENGINEERS  
 Dallas, Texas

PROJECT ENGINEER: M.H.	PROJECT: 2005111	SHEET NO. 11
PROJECT TECHNICIAN: J.M.	DATE: April, 2009	