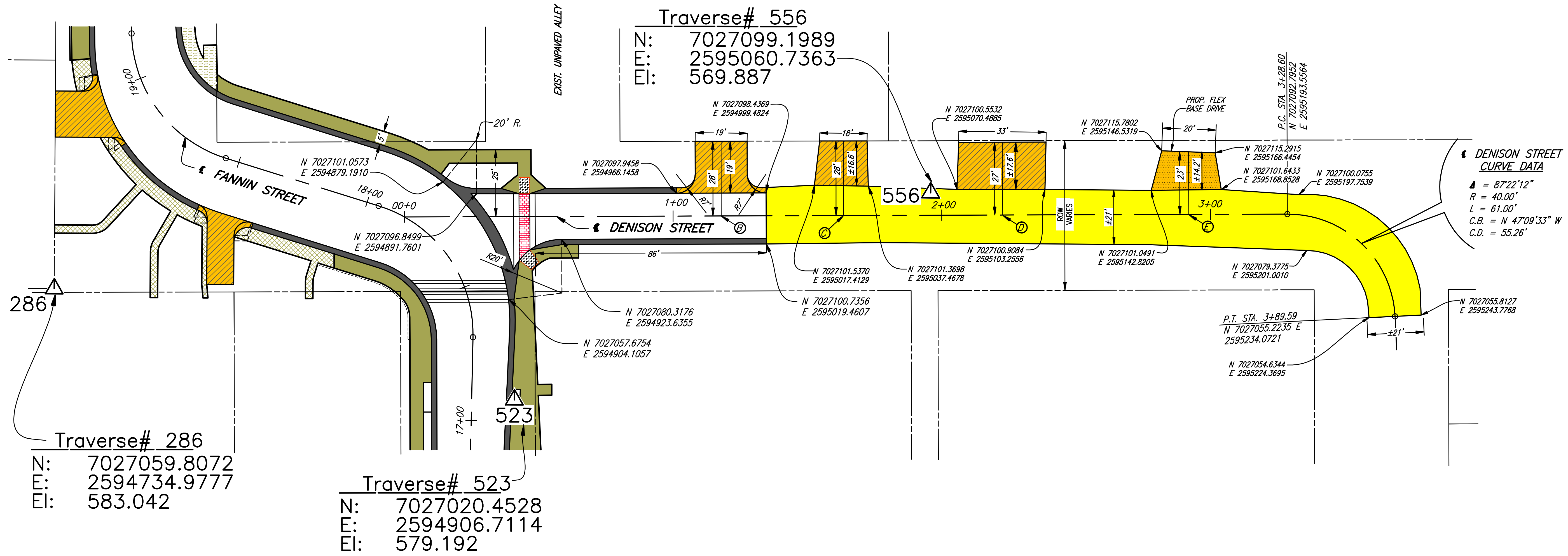


PLOTTED BY: GDAMS ON 4/30/2009
 PLOT STYLE: 22x34.cbt
 PLOT SCALE: 1:20
 C:\Acad_Jobs\Rockwall\20051111\Sheets\2005111-010_C006D-06.dwg
 REVISED: 4/24/09 - GDAMS

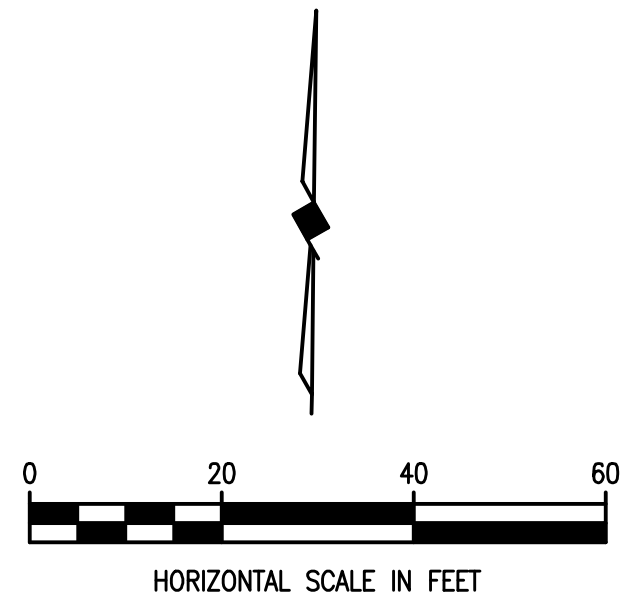


LEGEND

- PROPOSED CONCRETE DRIVE
- PROPOSED BRICK PAVERS
- PROPOSED CONCRETE CURB AND GUTTER OR PROPOSED CONCRETE PARKING NICHE W/ VALLEY GUTTER & MONOLITHIC CONCRETE CURB
- PROPOSED CONCRETE SIDEWALK
- FIELD CHANGE NO. 8 SIDEWALK REVISIONS (-5 S.Y. NET)
- PROPOSED CONCRETE DRIVEWAY
- PROPOSED FLEXIBLE BASE DRIVEWAY

POINT	COORDINATE N, E
(A)	-
(B)	N 7027089.6923, E 2594982.9393
(C)	N 7027090.3625, E 2595028.4362
(D)	N 7027091.2340, E 2595087.5906
(E)	N 7027092.2542, E 2595156.8317

NOTE:
 UNLESS OTHERWISE SHOWN, ALL DRIVEWAY FACE OF CURB RADIUS ARE 7' AND BACK OF CURB RADIUS IS 5'.



This record drawing is a compilation of the sealed engineering drawing for this project; modified by addenda, change orders and information furnished by the contractor. The information shown on the record drawings that was provided by the contractor or others not associated with the design engineer cannot be verified for accuracy or completeness. This original sealed drawings are on file at the offices of Birkhoff, Hendricks & Conway, L.L.P.

BY MH DATE 4/25/09

THESE DOCUMENTS ARE FOR BIDDING, CONSTRUCTION, AND PERMIT PURPOSES.
 DATE: 4/19/09



CITY OF ROCKWALL, TEXAS

FANNIN STREET IMPROVEMENTS
 COORDINATE/DIMENSION - PLAN
 DENISON STREET

BIRKHOFF, HENDRICKS & CONWAY, L.L.P.
 CONSULTING ENGINEERS
 Dallas, Texas

PROJECT ENGINEER: M.H.	PROJECT: 2005111	SHEET NO. 10
PROJECT TECHNICIAN: J.M.	DATE: June, 2006	

These plans and related specifications were prepared for construction of this specific project only. Reuse of these documents is not permitted without written authorization of Birkhoff, Hendricks, & Conway, L.L.P.