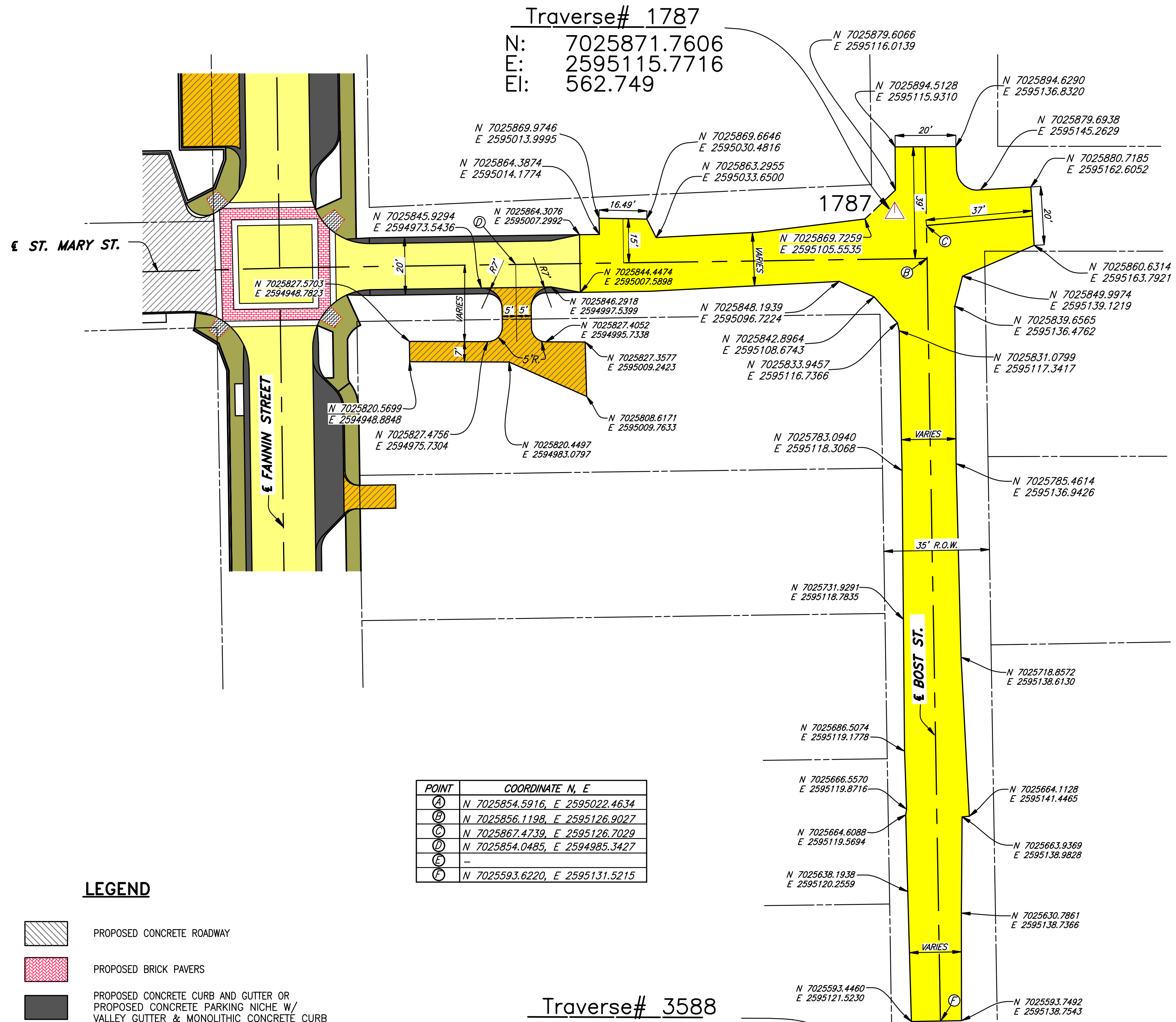


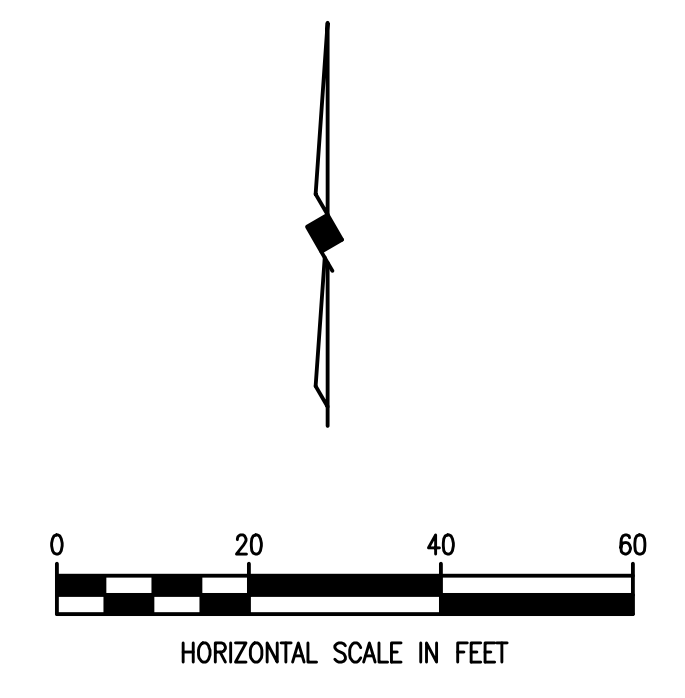
REVISIONS: 4/24/09 - GDAVIS  
 PLOTTED BY: GDAVIS ON 4/30/2009  
 PLOT STYLE: 22X34.ctb  
 PLOT SCALE: 1:20  
 C:\Acad\_Jobs\Rockwall\2005111\Sheets\2005111-009\_COORD-07.dwg



**Traverse# 1787**  
 N: 7025871.7606  
 E: 2595115.7716  
 El: 562.749

**Traverse# 3588**  
 N: 7025568.4961  
 E: 2595149.3635  
 El: 562.506

POINT	COORDINATE N, E
(A)	N 7025854.5916, E 2595022.4634
(B)	N 7025856.1198, E 2595126.9027
(C)	N 7025867.4739, E 2595126.7029
(D)	N 7025854.0485, E 2594985.3427
(E)	-
(F)	N 7025593.6220, E 2595131.5215



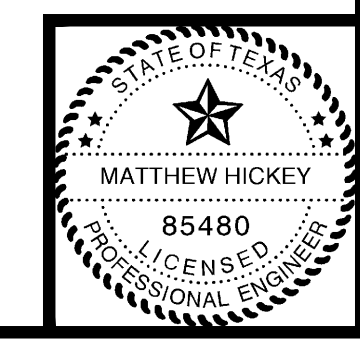
**NOTE:**  
 UNLESS OTHERWISE SHOWN, ALL DRIVEWAY FACE OF CURB RADIUS ARE 7' AND BACK OF CURB RADIUS IS 5'.

This record drawing is a compilation of the sealed engineering drawing for this project, modified by addenda, change orders and information furnished by the contractor. The information shown on the record drawings that was provided by the contractor or others not associated with the design engineer cannot be verified for accuracy or completeness. This original sealed drawings are on file at the offices of Birkhoff, Hendricks & Conway, L.L.P.  
 BY MH DATE 4/25/09

These plans and related specifications were prepared for construction of this specific project only. Reuse of these documents is not permitted without written authorization of Birkhoff, Hendricks, & Conway, L.L.P.

- LEGEND**
- PROPOSED CONCRETE ROADWAY
  - PROPOSED BRICK PAVERS
  - PROPOSED CONCRETE CURB AND GUTTER OR PROPOSED CONCRETE PARKING NICHE W/ VALLEY GUTTER & MONOLITHIC CONCRETE CURB
  - PROPOSED CONCRETE SIDEWALK
  - PROPOSED CONCRETE DRIVEWAY
  - PROPOSED ASPHALT OVERLAY

THESE DOCUMENTS ARE FOR BIDDING, CONSTRUCTION, AND PERMIT PURPOSES.  
 DATE: 6/19/06



**CITY OF ROCKWALL, TEXAS**  
 FANNIN STREET IMPROVEMENTS  
 COORDINATE/DIMENSION - PLAN  
 ST. MARY & BOST STREET  
**BIRKHOFF, HENDRICKS & CONWAY, L.L.P.**  
 CONSULTING ENGINEERS  
 Dallas, Texas

PROJECT ENGINEER: M.H.	PROJECT: 2005111	SHEET NO. 9
PROJECT TECHNICIAN: M.V.O.	DATE: June, 2006	