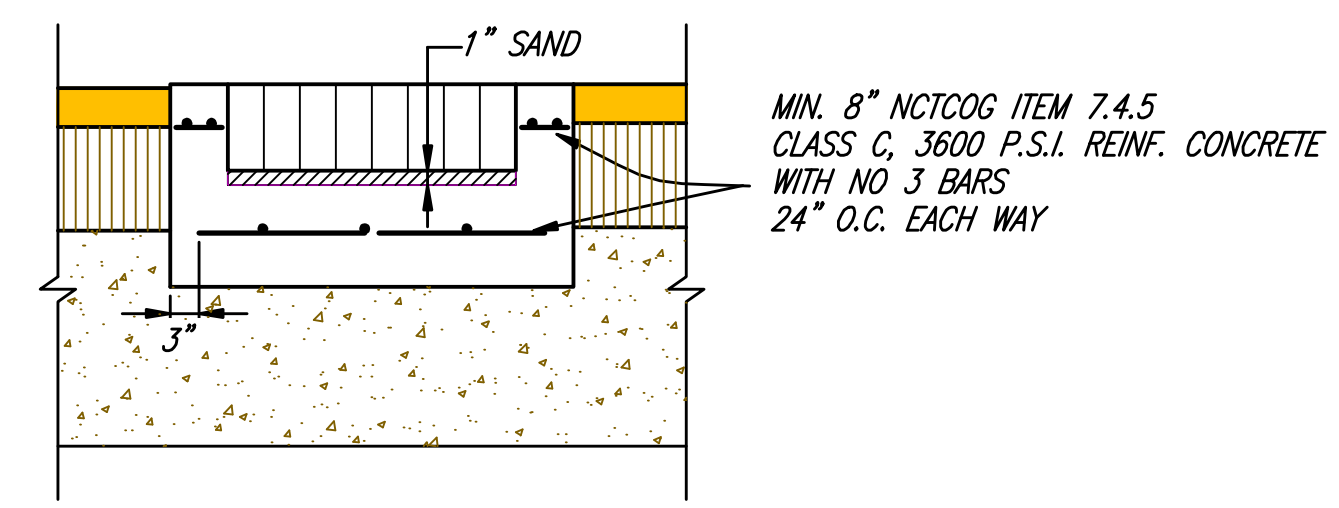


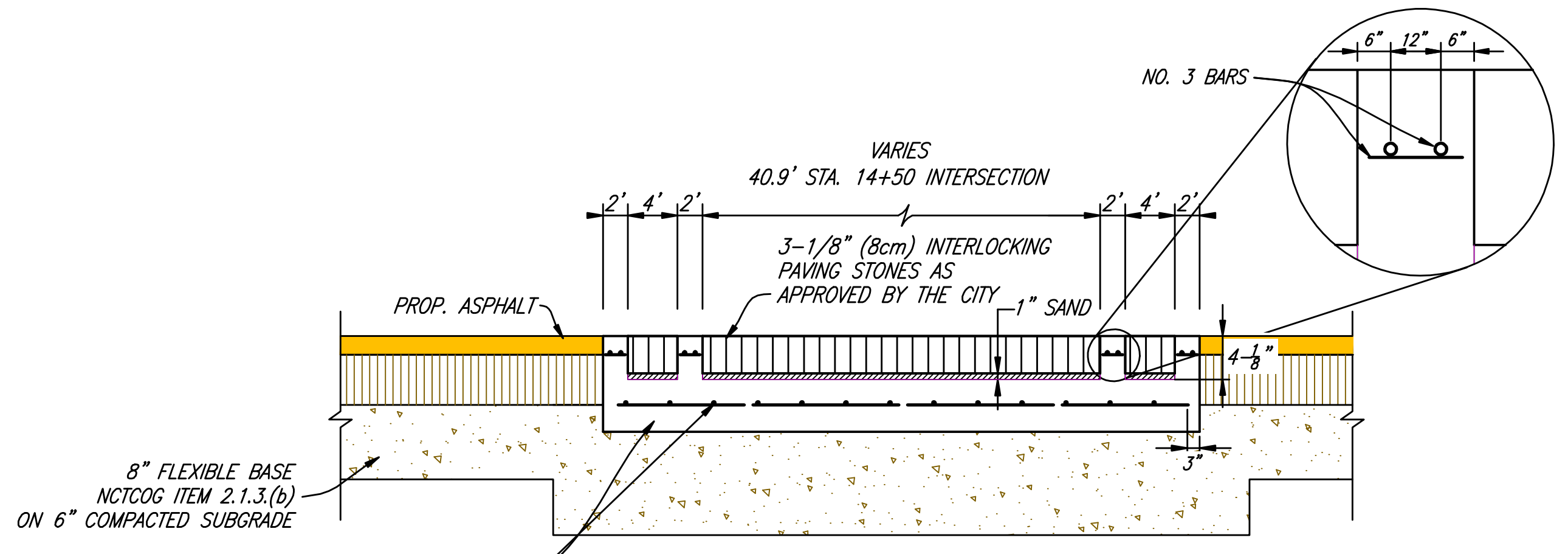
TYPICAL CROSSWALK DETAILS

FANNIN STREET STA. 14+50  
PAVER DETAILS

PAVER NOTES:  
THE INTERLOCKING PAVING STONES SHALL BE SOLID CONCRETE, INTERLOCKING PAVERS AND SHALL BE IN CONFORMANCE WITH A.S.T.M. C936.



SECTION B-B  
PAVERS CROSSWALK-SECTION "B"  
NO SCALE



SECTION A-A  
PAVERS INTERSECTION-SECTION "A"  
NO SCALE

This record drawing is a compilation of the sealed engineering drawing for this project, modified by addenda, change orders and information furnished by the contractor. The information shown on the record drawings that was provided by the contractor or others not associated with the design engineer cannot be verified for accuracy or completeness. This original sealed drawings are on file at the offices of Birkhoff, Hendricks & Conway, L.L.P.

BY MH DATE 4/25/09

THESE DOCUMENTS ARE FOR BIDDING, CONSTRUCTION, AND PERMIT PURPOSES.

DATE: 6/19/09



CITY OF ROCKWALL, TEXAS		
FANNIN STREET IMPROVEMENTS PAVER DETAILS		
BIRKHOFF, HENDRICKS & CONWAY, L.L.P. CONSULTING ENGINEERS Dallas, Texas		
DESIGNED BY: <u>M.H.</u>	PROJECT: <u>2005-111</u>	SHEET NO. <u>110</u>
DRAWN BY: <u>M.V.O.</u>	DATE: <u>MAY, 2006</u>	

These plans and related specifications were prepared for construction of this specific project only. Reuse of these documents is not permitted without written authorization of Birkhoff, Hendricks, & Conway, L.L.P.