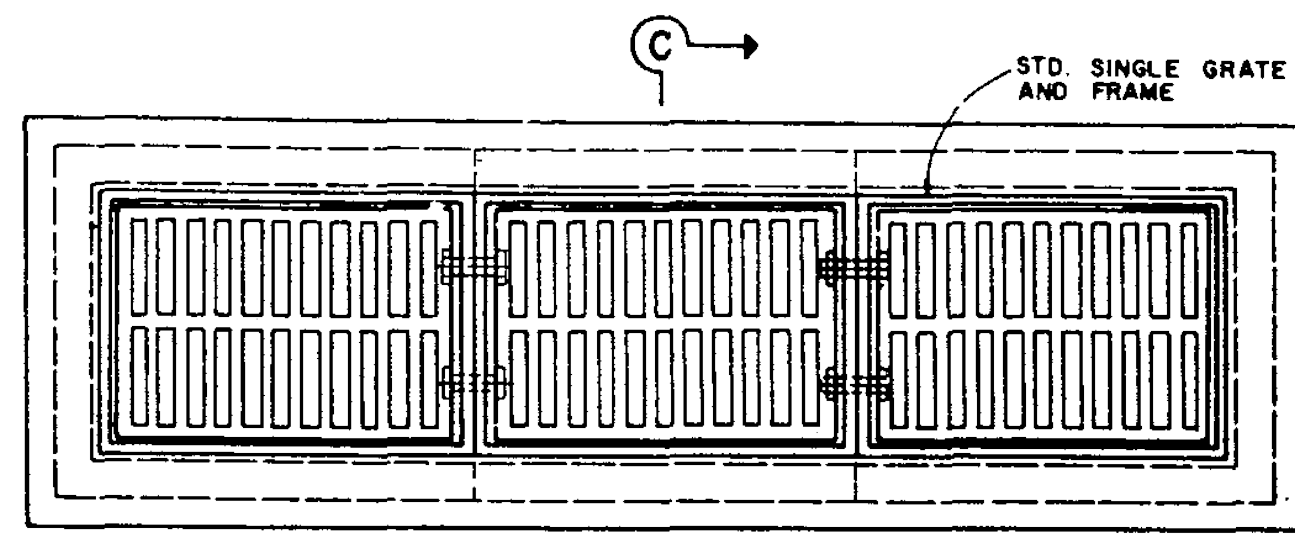
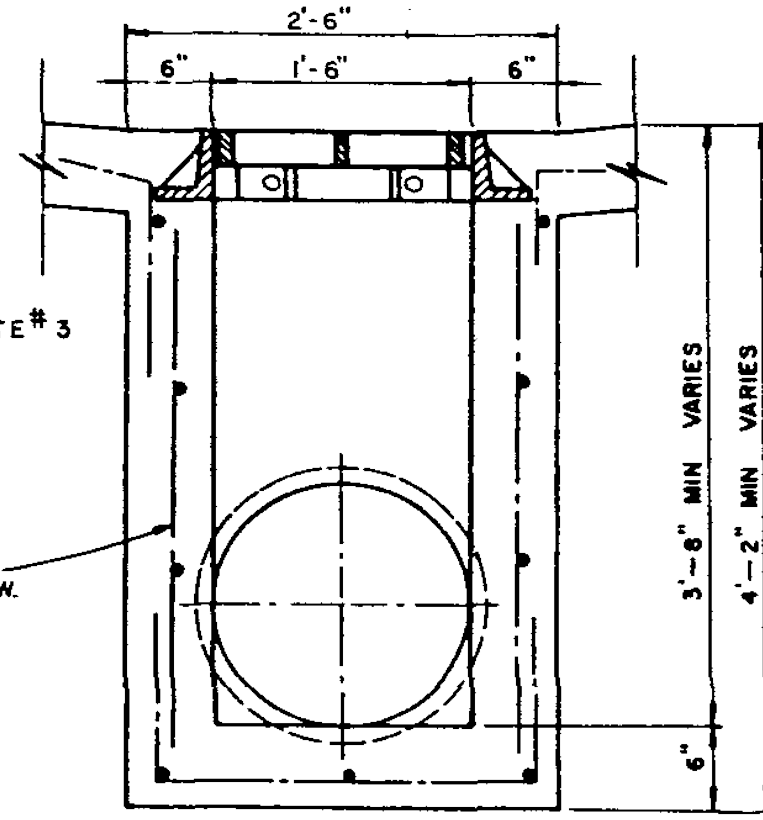


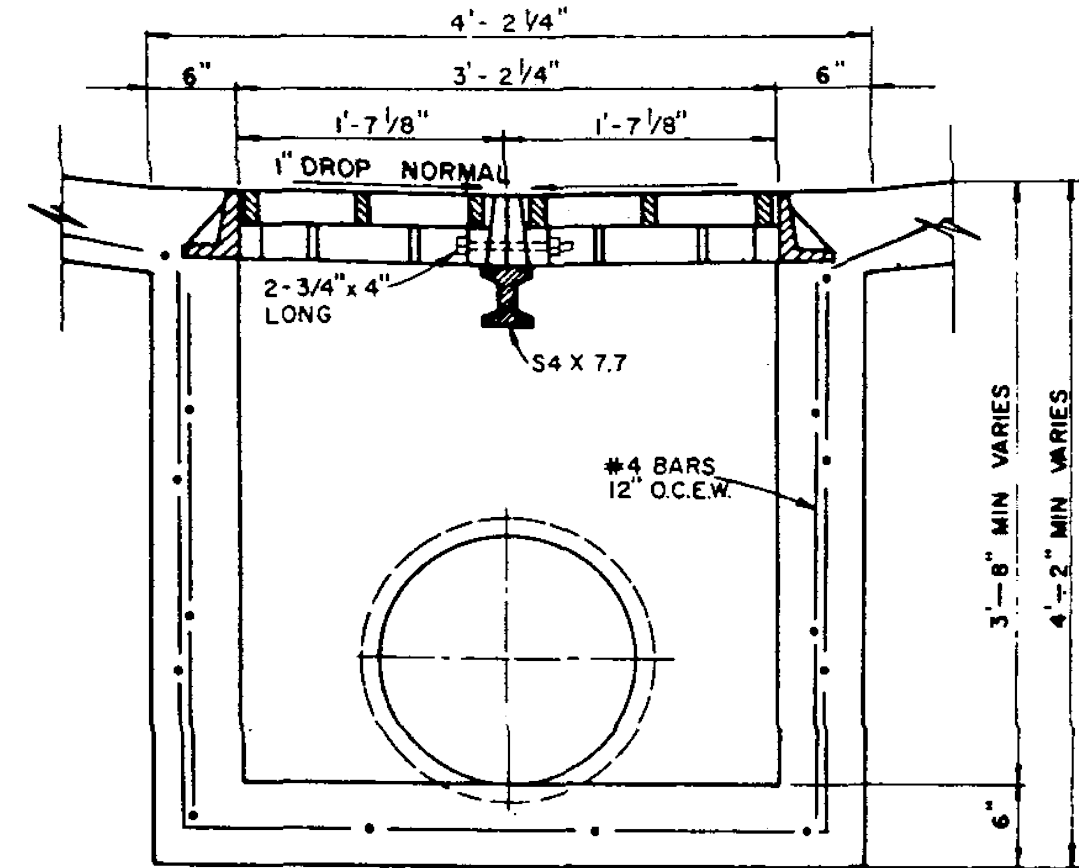
**TWO GRATE INLET**



**THREE GRATE INLET**

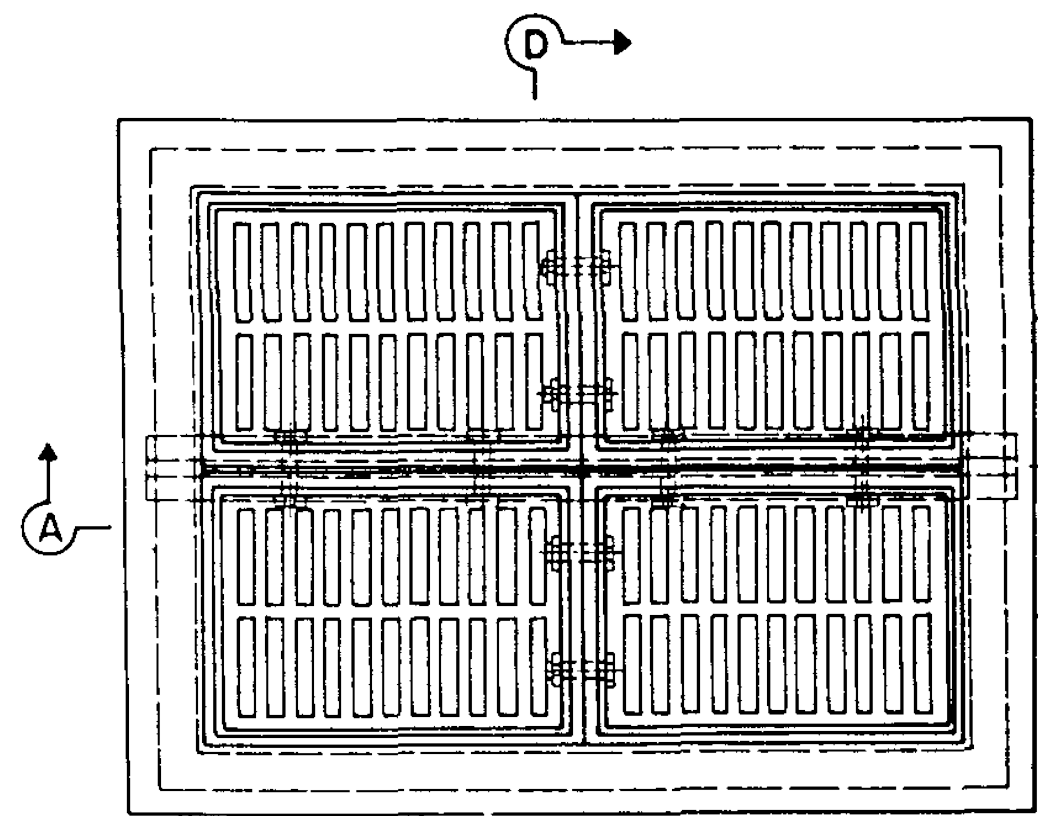


**SECTION C-C**

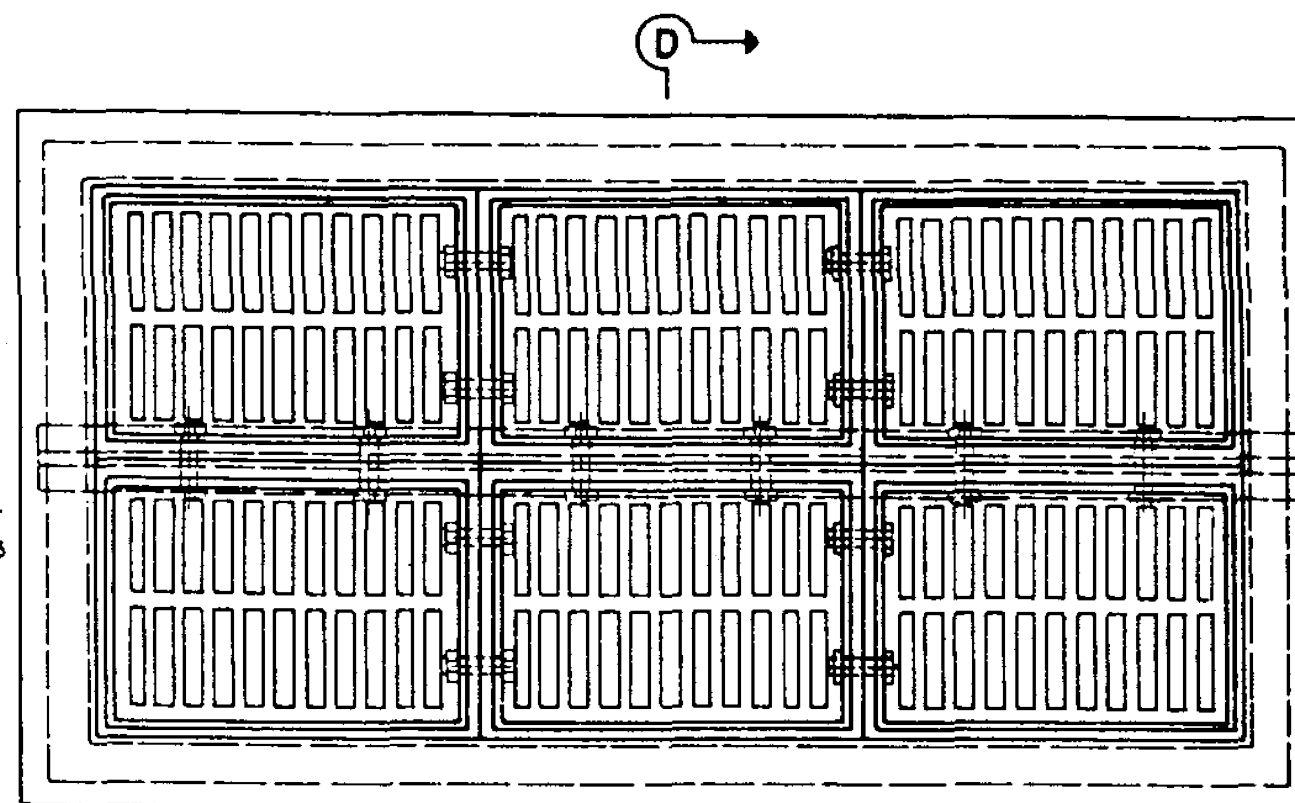


**SECTION D-D**

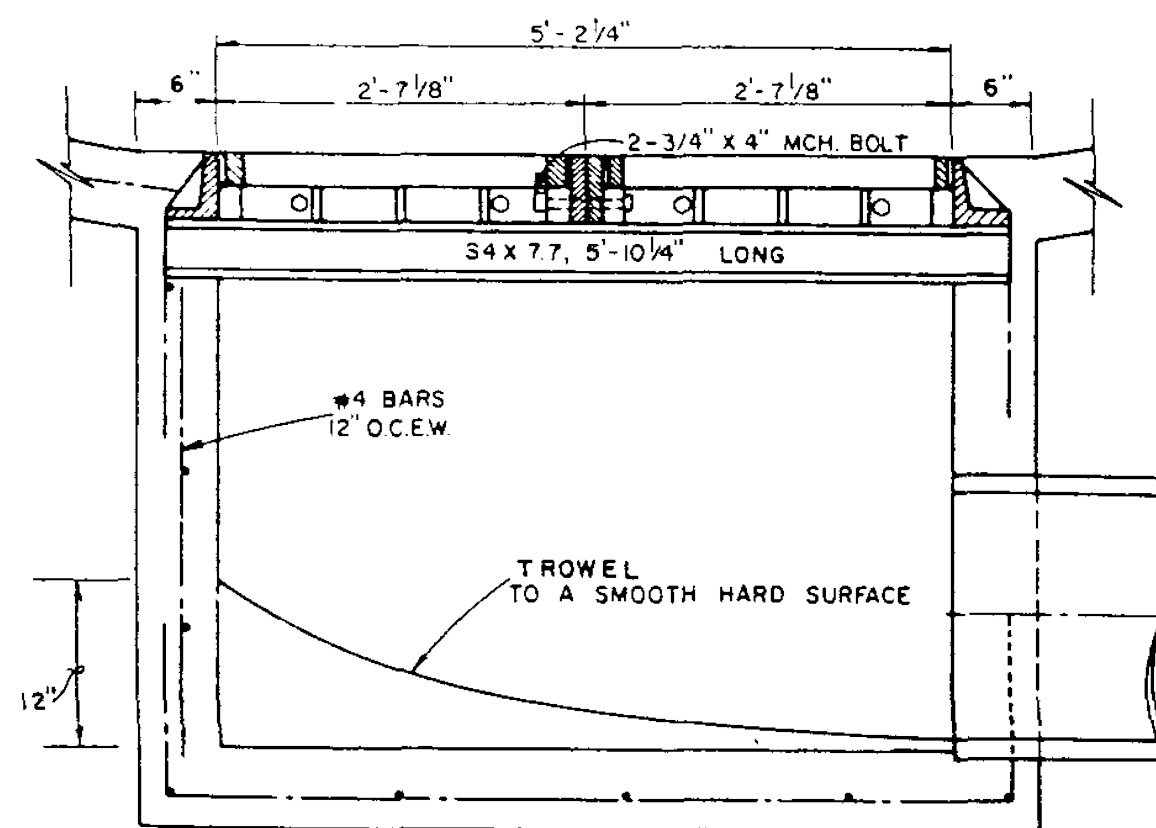
- NOTES**
1. ALL LAPS AND EXTENSIONS OF REINFORCING BARS SHALL BE 30 BAR DIAMETERS UNLESS NOTED OTHERWISE.
  2. TACK WELD GRATES IN PLACE OR USE GRATE LOCK.
  3. PIPE MAY BE PLACED IN ANY WALL, BUT SHALL NOT ENTER ANY CORNER, OR BOTTOM.
  - 4) CONCRETE TO BE MIN. OF 4200 PSI



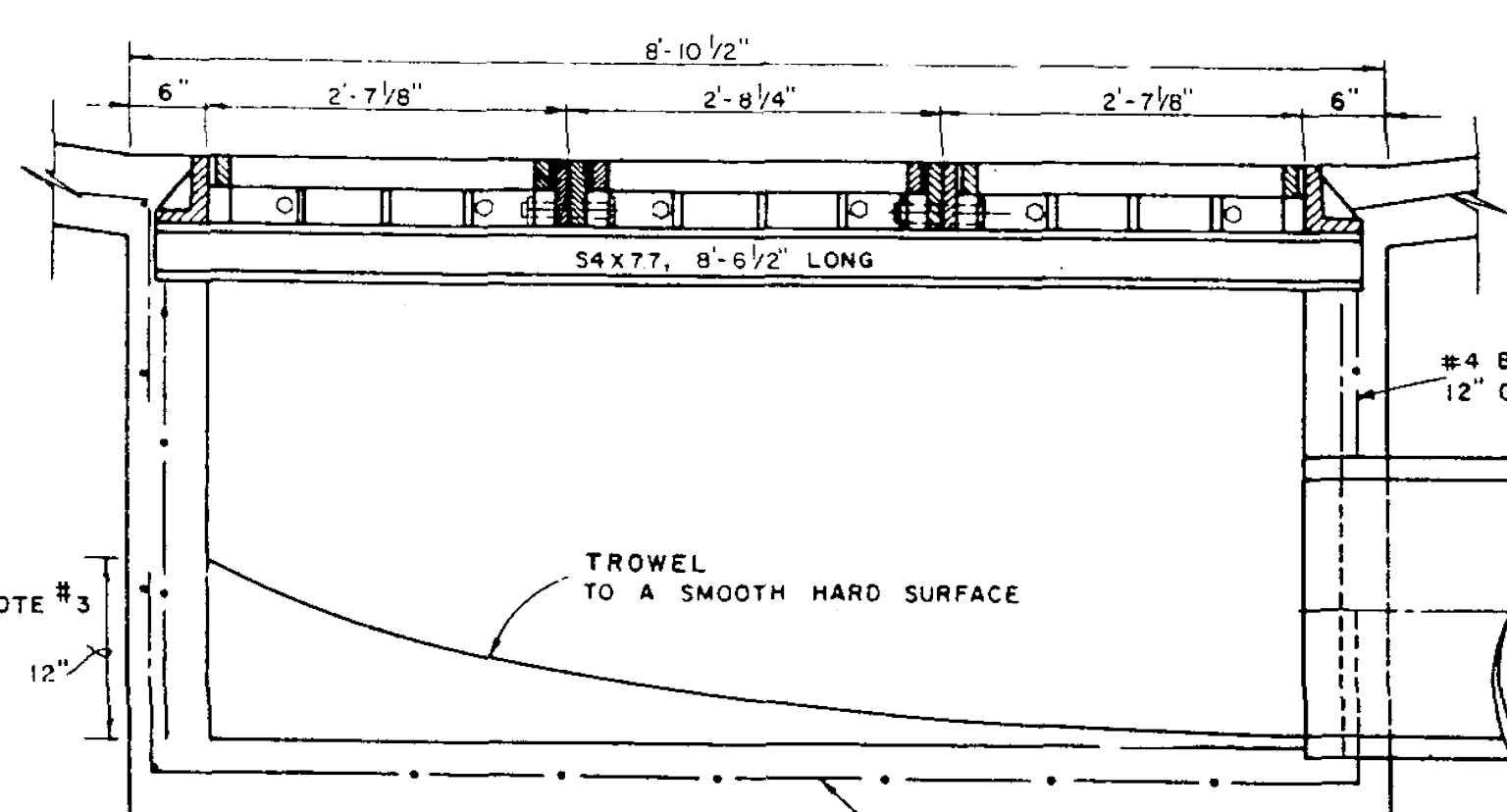
**FOUR GRATE INLET**



**SIX GRATE INLET**

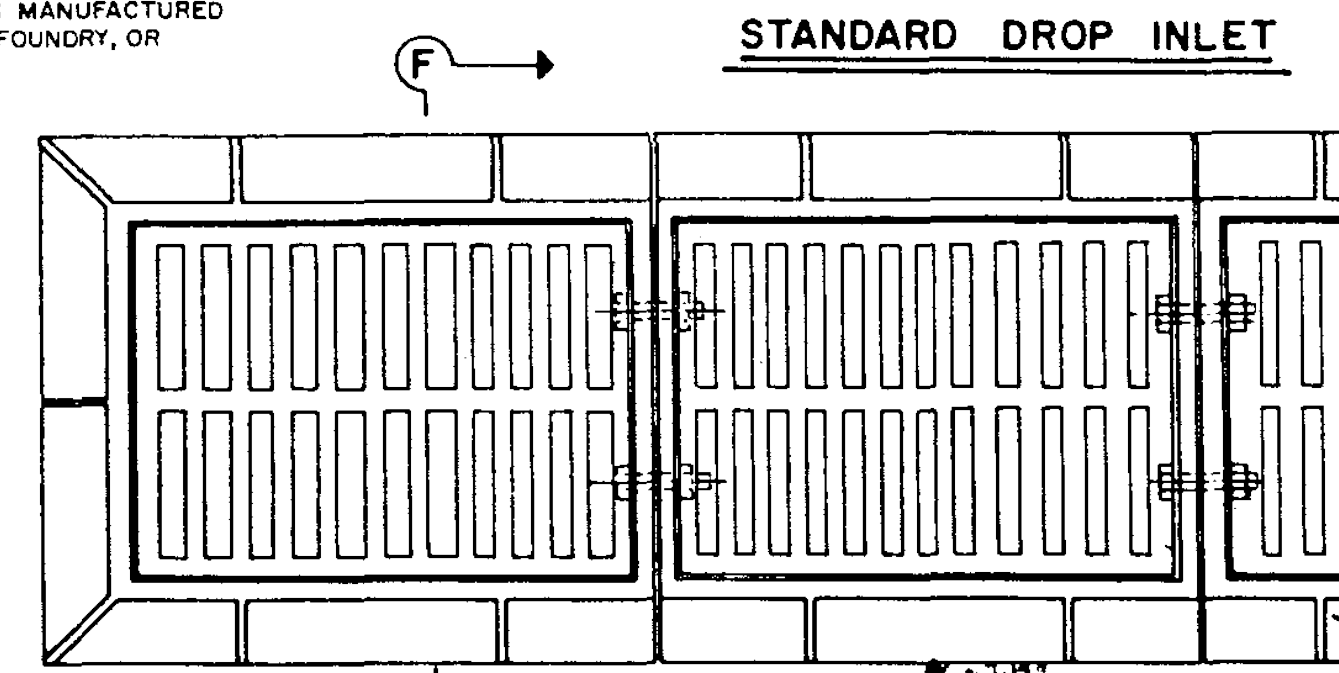


**SECTION A-A**

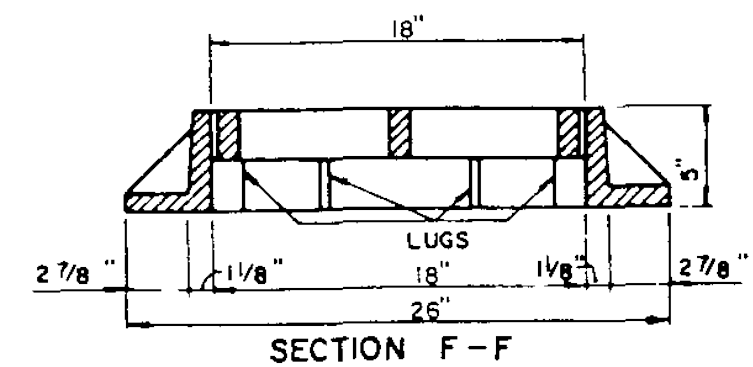


**SECTION B-B**

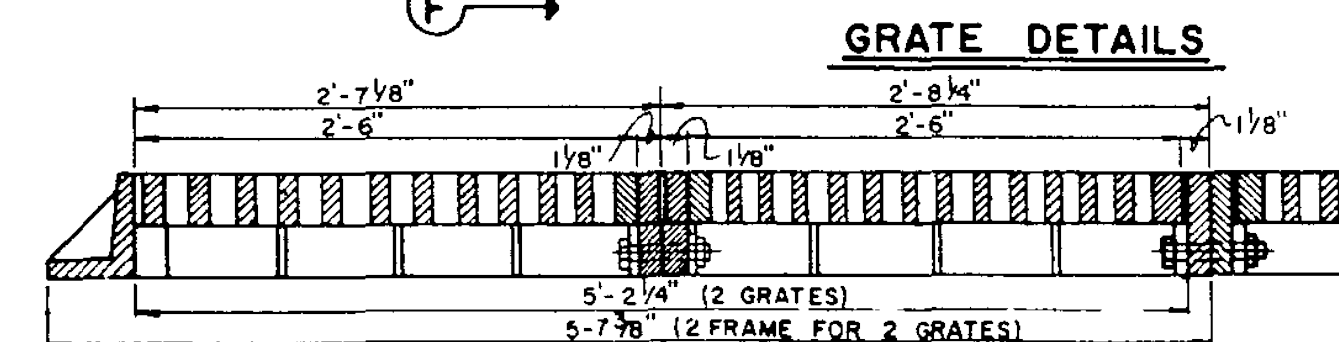
NOTE 1: GRATE AND FRAME SHALL BE PATTERN NO 814 AS MANUFACTURED BY BASS & HAYES FOUNDRY, OR APPROVED EQUAL.



**STANDARD DROP INLET**



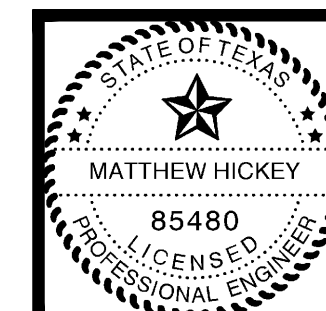
**SECTION F-F**



**GRATE DETAILS**

This record drawing is a compilation of the sealed engineering drawing for this project; modified by addenda, change orders and information furnished by the contractor. The information shown on the record drawings that was provided by the contractor or others not associated with the design engineer cannot be verified for accuracy or completeness. This original sealed drawings are on file at the offices of Birkhoff, Hendricks & Conway, L.L.P.  
 BY MH DATE 4/25/09

THESE DOCUMENTS ARE FOR BIDDING, CONSTRUCTION, AND PERMIT PURPOSES.  
 Matthew Hickey  
 DATE: 4/19/09



**CITY OF ROCKWALL, TEXAS**

FANNIN STREET IMPROVEMENTS  
 STANDARD DETAILS  
 COMBINATION INLETS

**BIRKHOFF, HENDRICKS & CONWAY, L.L.P.**  
 CONSULTING ENGINEERS  
 Dallas, Texas

PROJECT ENGINEER:	M.H.	PROJECT:	2005111	SHEET NO.	107A
PROJECT TECHNICIAN:	J.M.	DATE:	March, 2008		