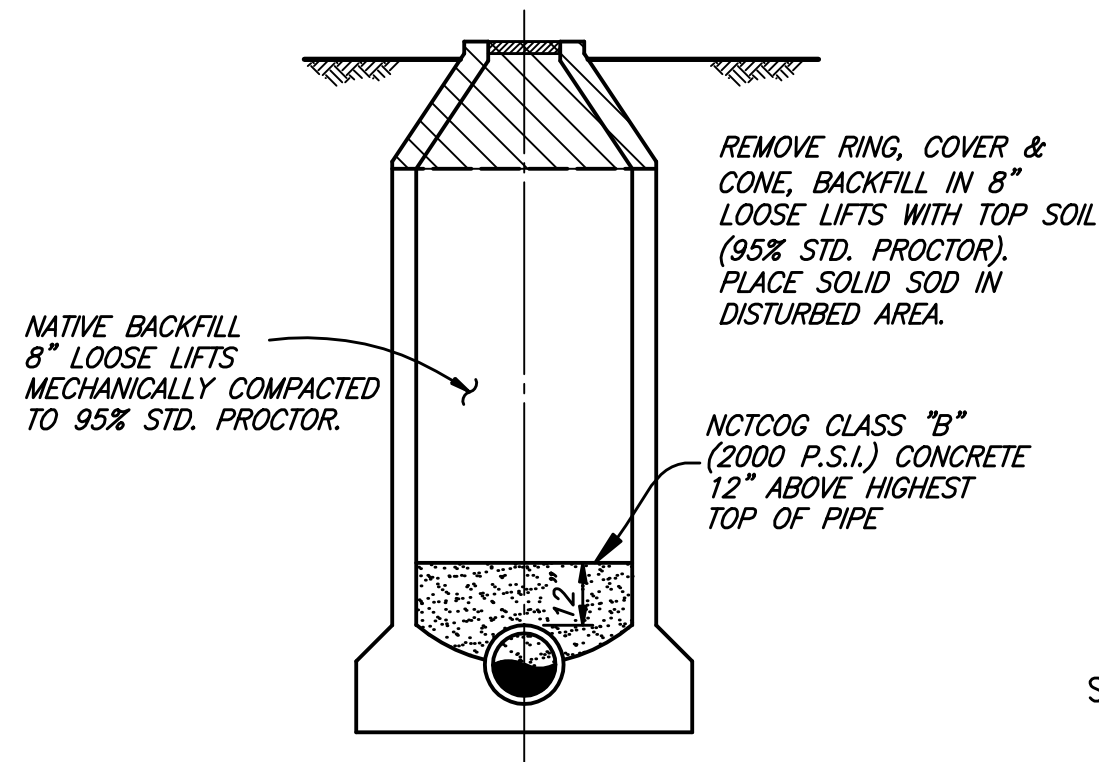
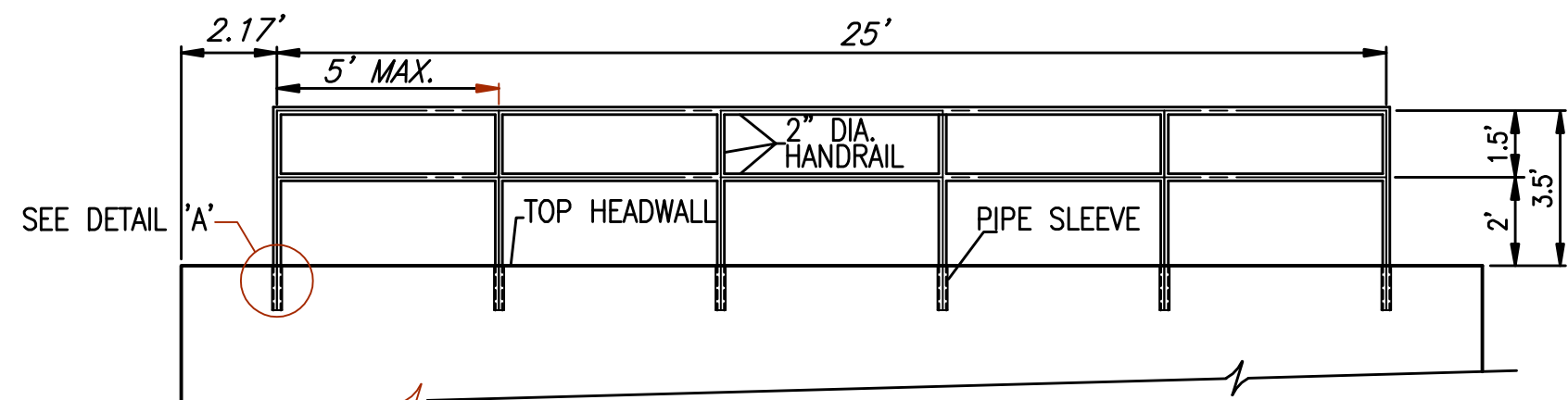


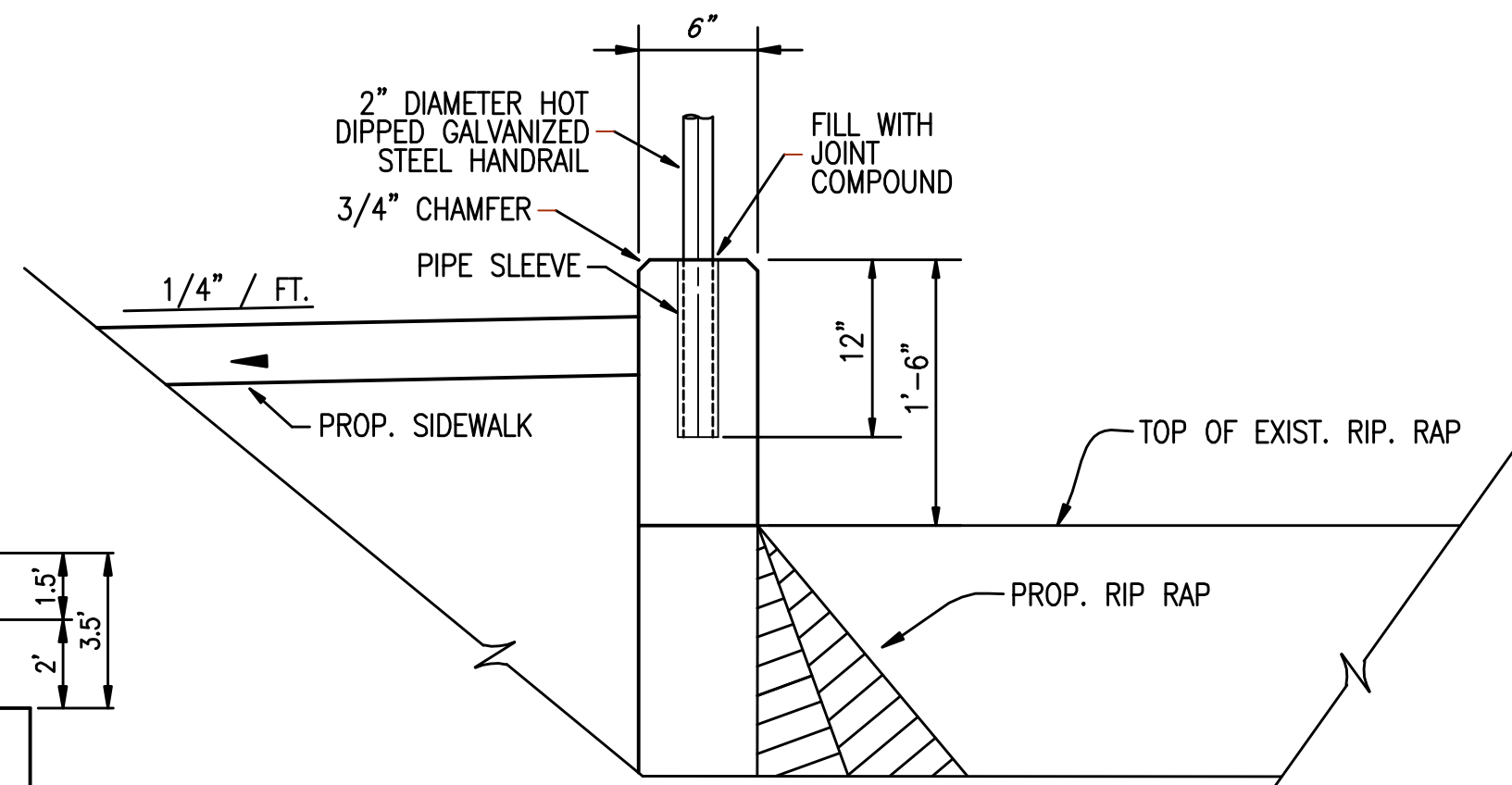
PLOTTED BY: GDAVIS ON 5/4/2009
 PLOT STYLE: 22x34.ctb
 PLOT SCALE: 1:1
 C:\Acad_Jobs\Rockwall\2005111\Sheets\2005111-105_MISC-DETAILS-02.dwg
 REVISED: 4/22/09 - GDAVIS



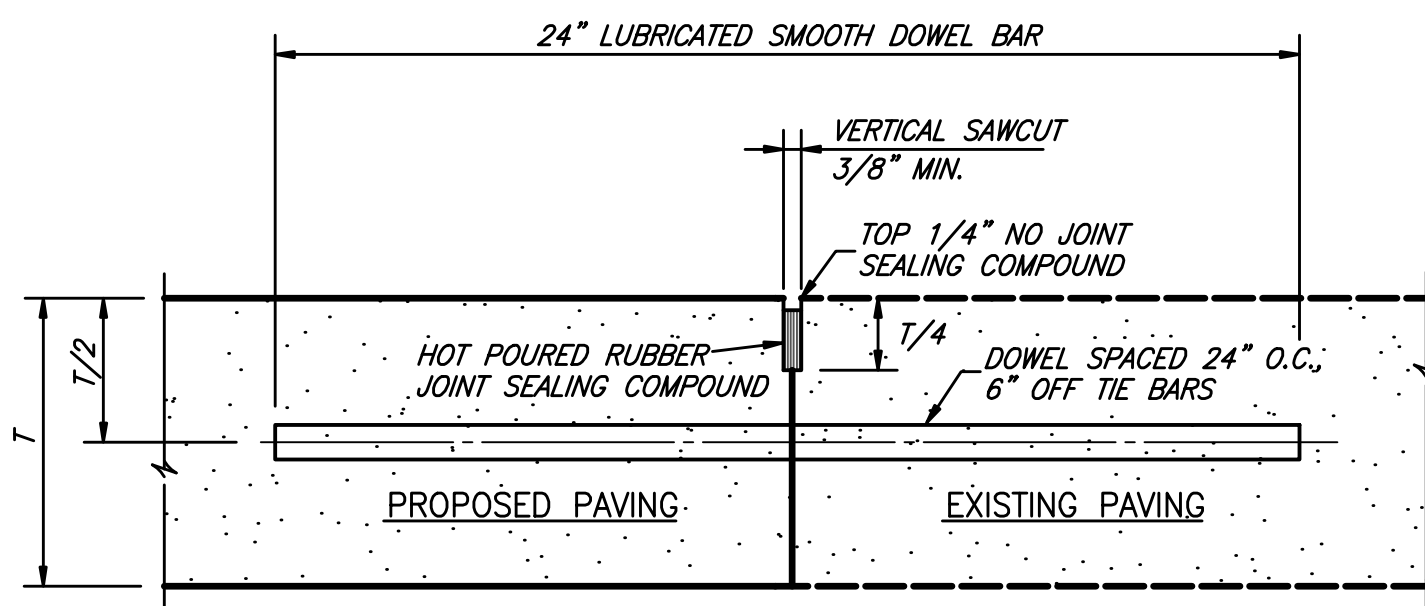
MANHOLE ABANDONMENT
OUTSIDE PAVEMENT AREA



HANDRAIL DETAIL

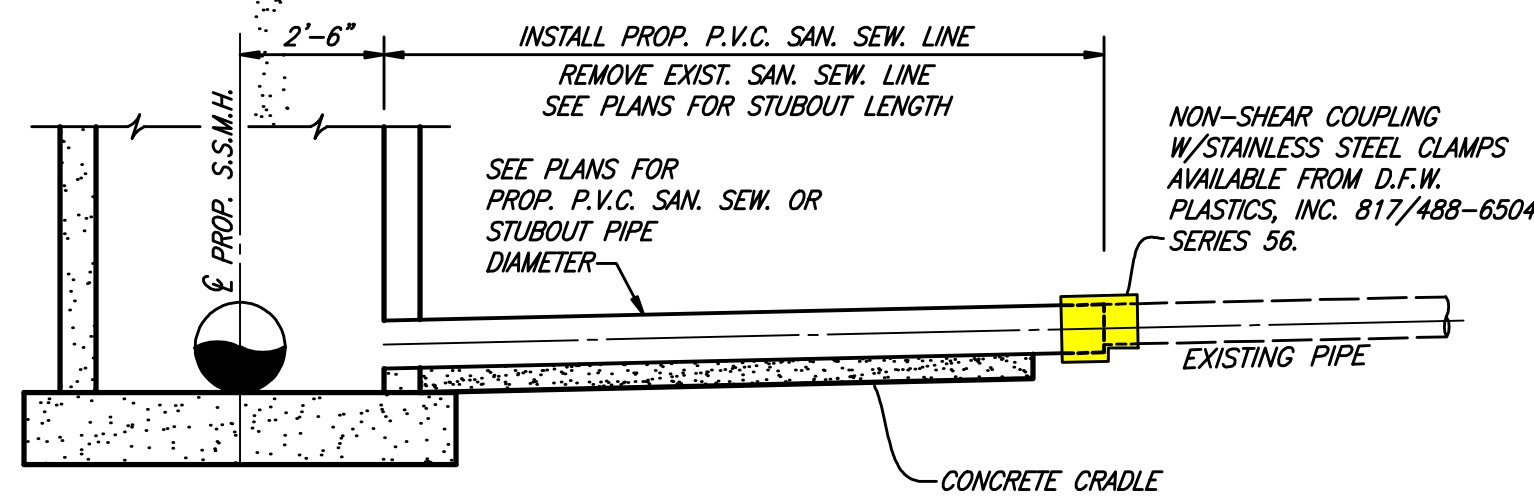


HANDRAIL DETAIL 'A'



- NOTE:**
1. T-8" AND GREATER NO. 6 BAR, T-6" AND LESS NO. 5 BAR
 2. LONGITUDINAL BUTT CONSTRUCTION MAY BE UTILIZED IN PLACE OF LONGITUDINAL HINGED (KEYWAY) JOINT AT CONTRACTORS OPTION.
 3. DOWEL BARS SHALL BE DRILLED INTO PAVEMENT HORIZONTALLY BY USE OF A MECHANICAL RIG. HAND DRILLING NOT ACCEPTABLE. DAMAGE TO EXISTING PAVEMENT SHALL BE REMOVED BY CONTRACTOR AND JOINT CONSTRUCTED AT CONTRACTORS EXPENSE.
 4. DOWEL BAR SHOWN IS IN ADDITION TO TIE BARS (12" O.C.-6" OFF DOWELS).
 5. TIE BARS SHALL BE NO. 5 BAR DEFORMED. TIE BAR SHALL HAVE A LENGTH OF 24 INCHES. TIE BARS ARE REQUIRED TO BE DEFORMED.

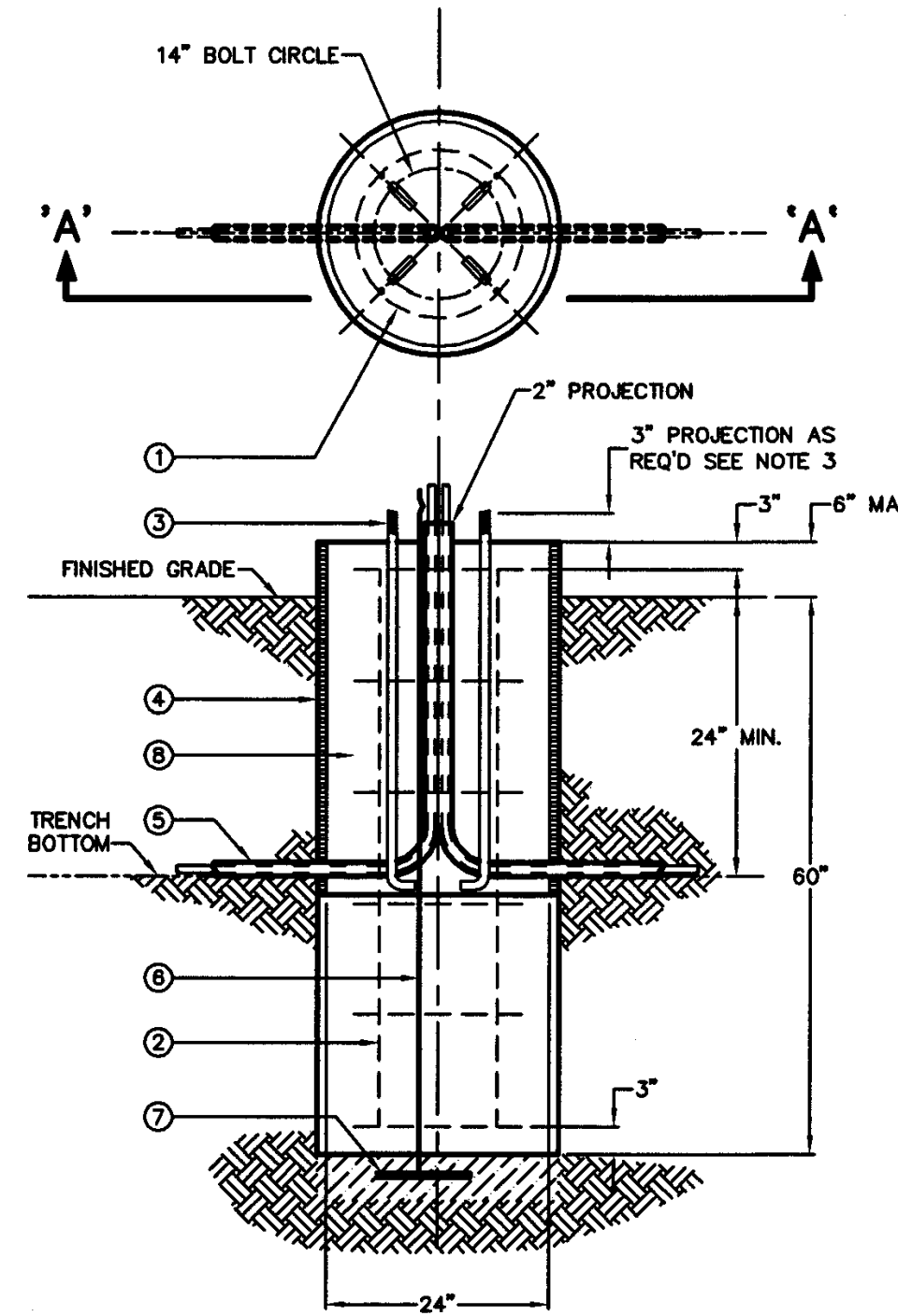
LONGITUDINAL BUTT JOINT



STUBOUT CONNECTION

NO SCALE

STREET LIGHT FOUNDATION
25', 30' & 40' SQUARE STEEL POLE
40' M.H. ROUND STEEL POLE



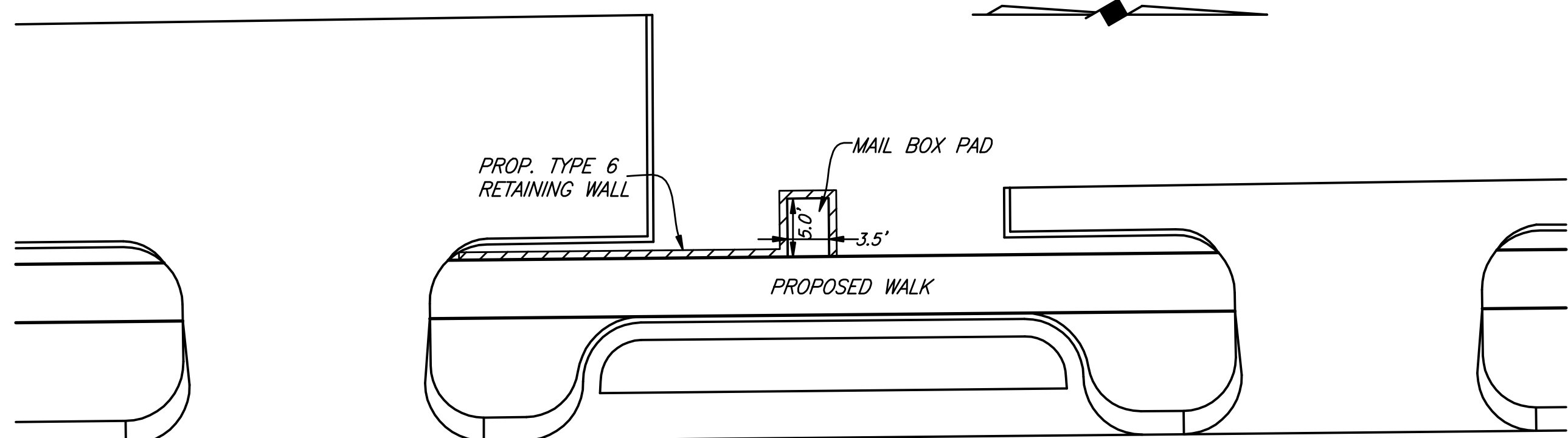
SECTION "A - A"

- NOTE:**
1. CONCRETE TO BE A MINIMUM 3000 P.S.I. AT 28 DAYS (5 SACK) MINIMUM AGGREGATE 3/4". TOP OF FOUNDATION TO BE TROWELED TO A FLAT AND LEVEL SURFACE. AVOID EXCESSIVE TROWELING. CONCRETE TO SET A MINIMUM OF 72 HOURS BEFORE POLE INSTALLATION.
 2. REBAR HOOPS ARE TIED BEGINNING 3" BELOW TOP OF CONCRETE FORM AND ARE REPEATED AT APPROXIMATE 1 FT. INTERVALS TO BOTTOM OF FOUNDATION.
 3. ANCHOR BOLTS ARE TO BE SUPPLIED WITH THIS PROJECT. THE CITY WILL PROVIDE THE ANCHOR BOLT TEMPLATE TO CONTRACTOR.
 4. CONCRETE FORM OF SONOTUBE TO EXTEND TO BOTTOM OF TRENCH OR AS NEEDED.
 5. PROVIDE 24" PIGTAIL FOR CONNECTION OF GROUND WIRE TO POLE.
 6. A MINIMUM OF 12" OF BARE #6 SD CU WIRE TO BE PLACED IN BOTTOM OF HOLE AND COVERED WITH 2" OF DIRT.
 7. IF SOIL HAS BEEN DISTURBED, EXTEND FOUNDATION BY THE DEPTH OF DISTURBED SOIL.
 8. NO PRECAST STREET LIGHTING BASES WILL BE ALLOWED.

ITEM	QTY.	DESCRIPTION	TSN/REF	CU	MU
1	6	#3 REBAR, 18 IN. DIAMETER HOOP, 3 IN. OVERLAP	314470		
2	4	#5 REBAR, STRAIGHT, 60 IN. LONG	3117821		
3	4	ANCHOR BOLT, GALV 1 1/4 IN (SUPPLIED W/POLE)			
4	AS REQ'D	CONCRETE FOUNDATION TUBE, IN. DIAMETER	313841	SLF25	
5	AS REQ'D	CONDUIT, PVC OR PEC (NOT IN FOUNDATION AUN)			
6	0.5 LB	WIRE, #6, COPPER, SOLID	310091		
7	1	GROUND, POLE BUTT WIRE COIL 8 AS REQ'D CONCRETE			

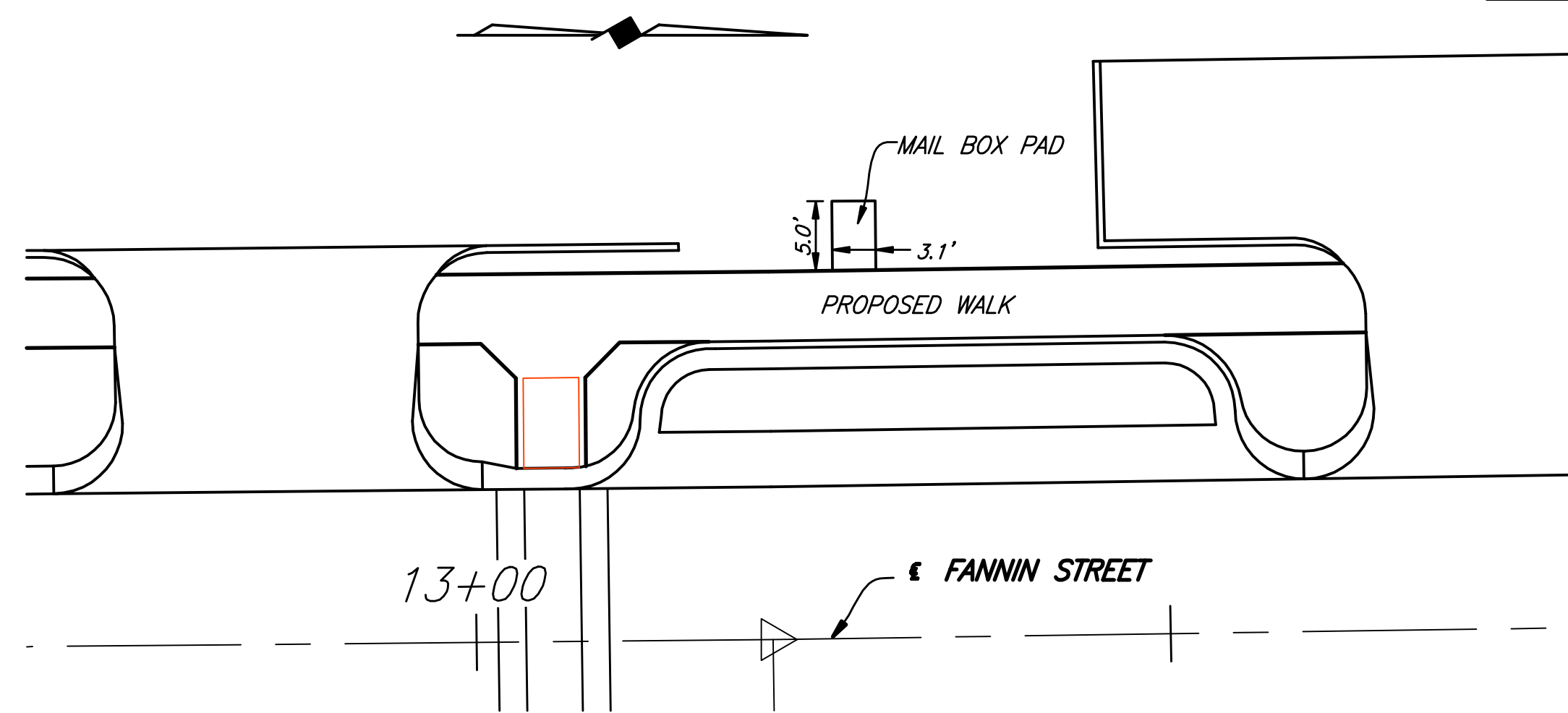
STREET LIGHT FOUNDATION

NOT TO SCALE



PROPOSED MAIL BOX PAD AT STA. 11+50

NO SCALE



PROPOSED MAIL BOX PAD AT STA. 13+25

NO SCALE

This record drawing is a compilation of the sealed engineering drawing for this project, modified by addenda, change orders and information furnished by the contractor. The information shown on the record drawings that was provided by the contractor or others not associated with the design engineer cannot be verified for accuracy or completeness. This original sealed drawings are on file at the offices of Birkhoff, Hendricks & Conway, L.L.P.

BY MH DATE 4/25/09

THESE DOCUMENTS ARE FOR BIDDING, CONSTRUCTION, AND PERMIT PURPOSES.

DATE: 6/19/09



CITY OF ROCKWALL, TEXAS

FANNIN STREET IMPROVEMENTS MISCELLANEOUS DETAILS

BIRKHOFF, HENDRICKS & CONWAY, L.L.P.
CONSULTING ENGINEERS
Dallas, Texas

PROJECT ENGINEER: M.H.	PROJECT: 2005111	SHEET NO. 105
PROJECT TECHNICIAN: J.M.	DATE: February, 2007	

These plans and related specifications were prepared for construction of this specific project only. Reuse of these documents is not permitted without written authorization of Birkhoff, Hendricks, & Conway, L.L.P.