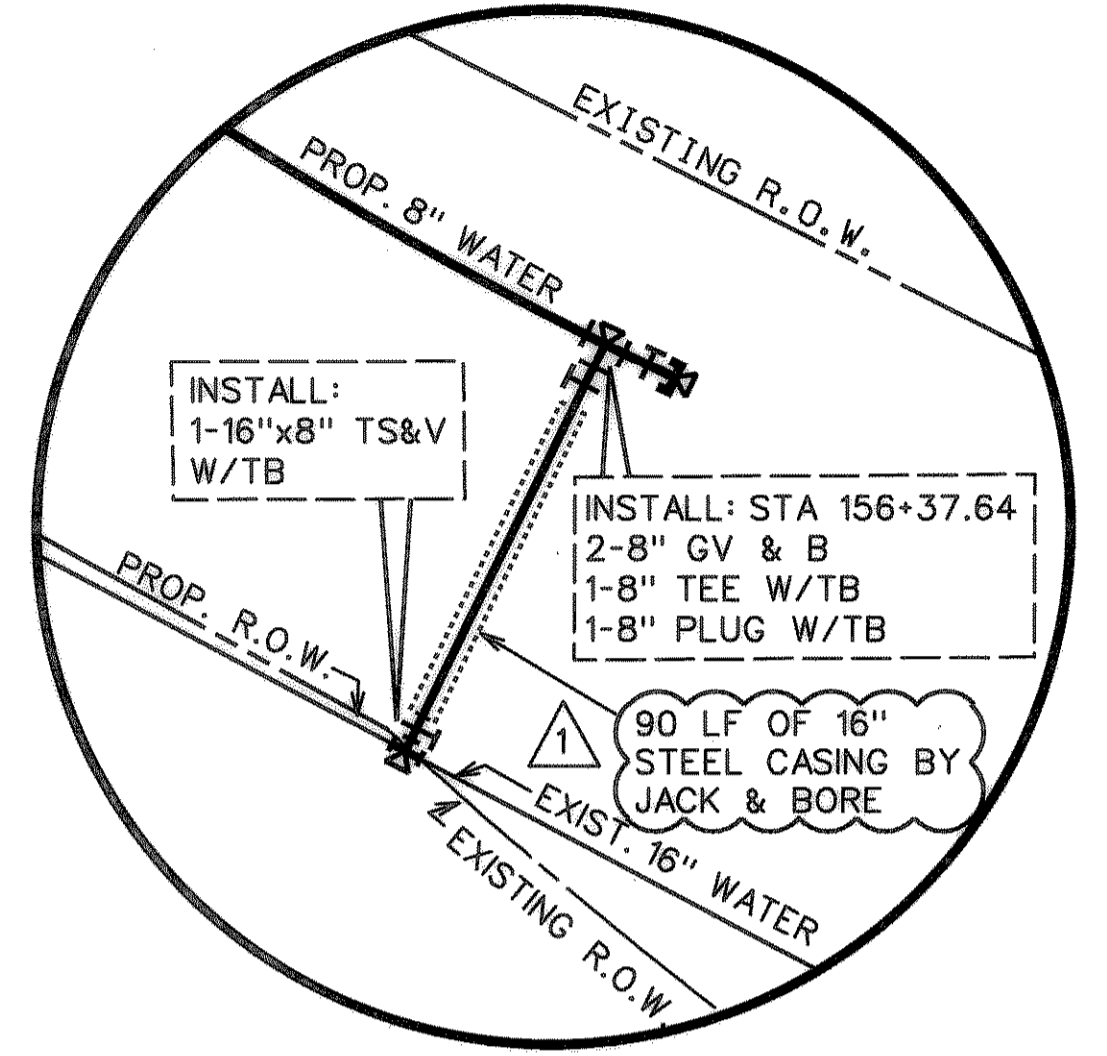
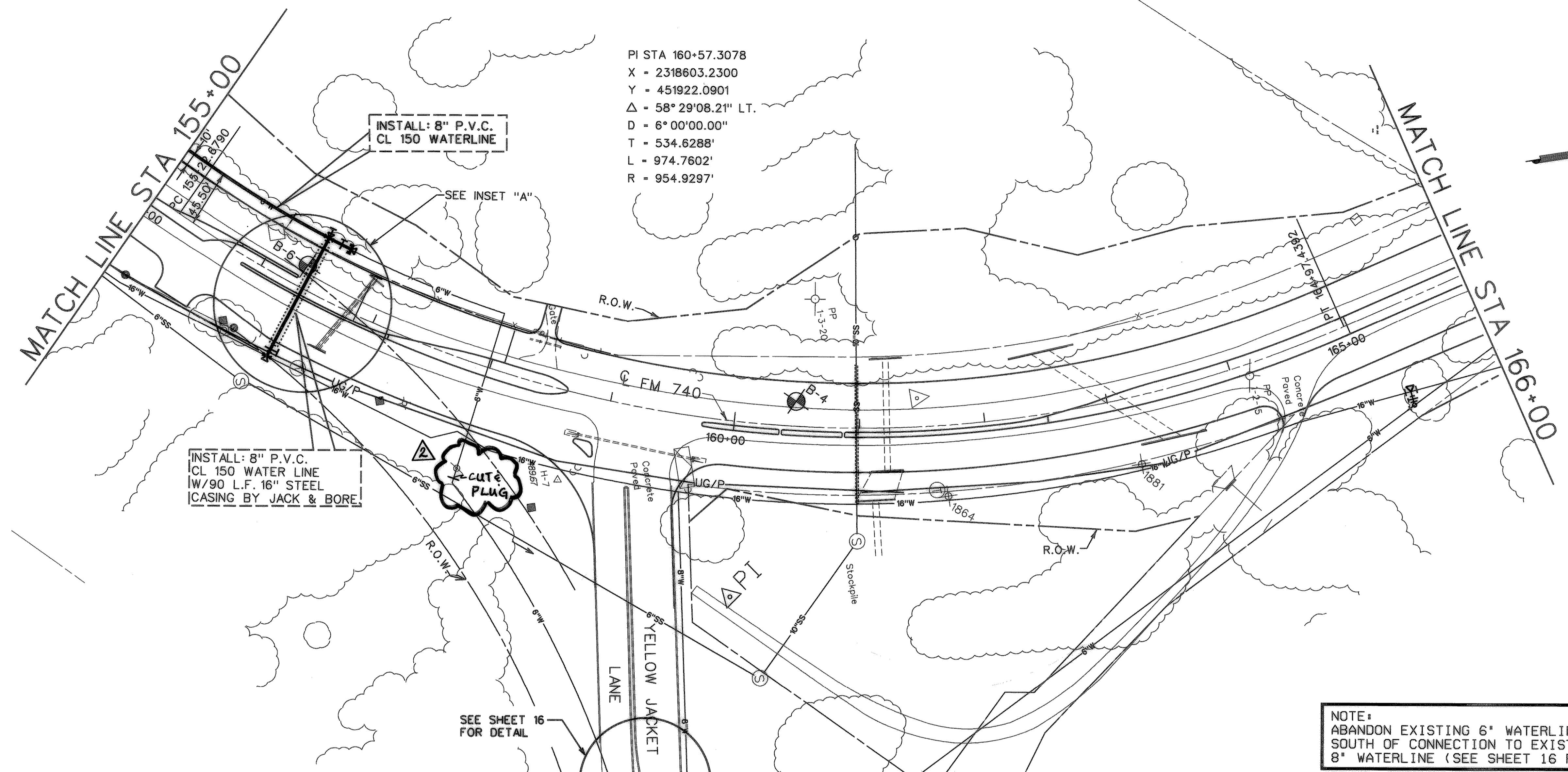


PI STA 160+57.3078
 X = 2318603.2300
 Y = 451922.0901
 Δ = 58° 29' 08.21" LT.
 D = 6° 00' 00.00"
 T = 534.6288'
 L = 974.7602'
 R = 954.9297'



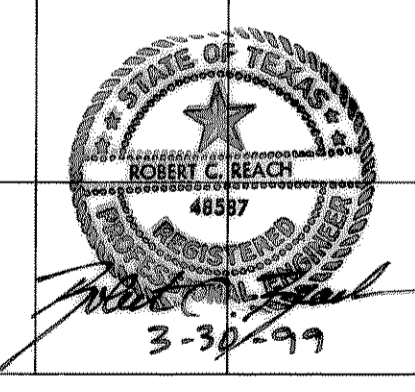
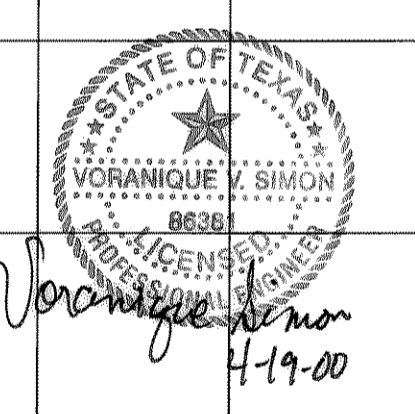
INSET "A"
 SEE STA 156+37.27 BELOW
 FOR PROFILE OF CROSSING

RECORD DRAWING
 VERIFIED BY *Voranyia Sim*
 DATE 4-20-00

NOTE:
 ABANDON EXISTING 6" WATERLINE
 SOUTH OF CONNECTION TO EXISTING
 8" WATERLINE (SEE SHEET 16 FOR DETAIL)

REVISION #1:
 CASING INSTALLATION TYPE ADDED

RECORD DRAWING



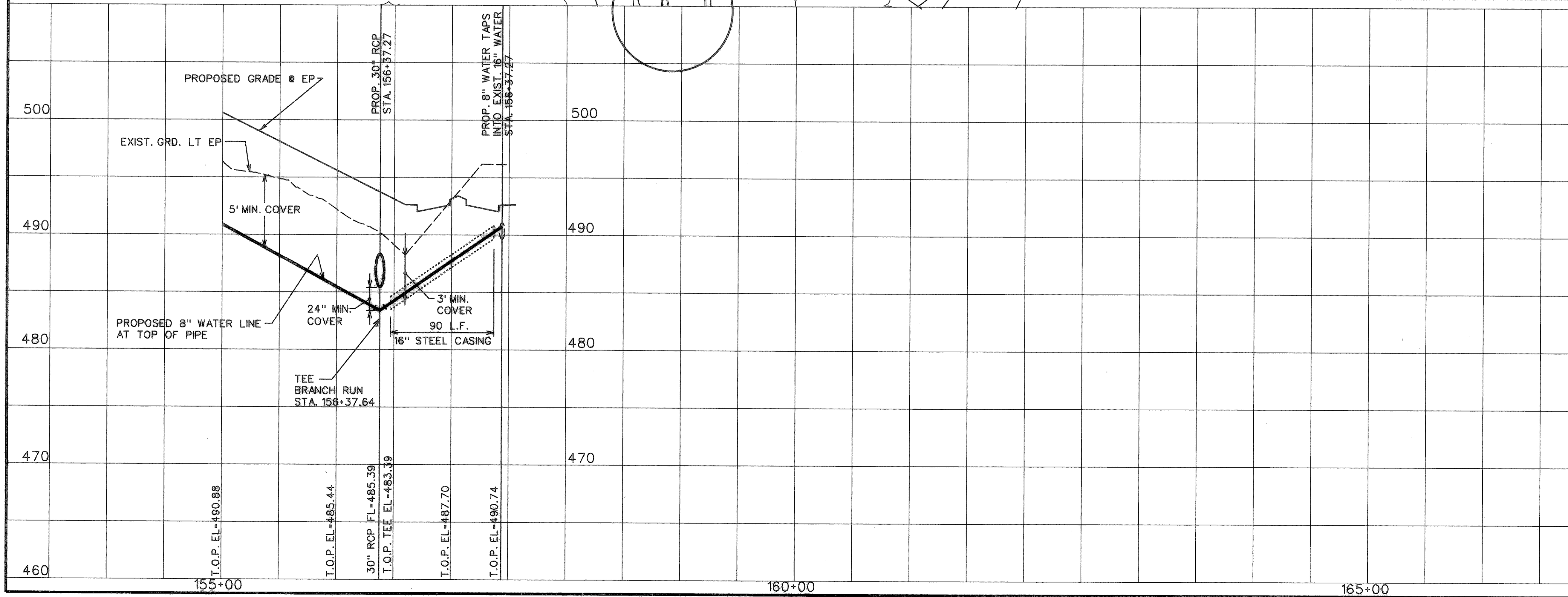
CITY OF ROCKWALL
 "THE NEW HORIZON"

**UTILITY RELOCATIONS
 FOR FM 740 WIDENING**

UTILITY PLAN AND PROFILE
PROPOSED 8" WATER LINE
 STA. 155+00 TO STA. 166+00

TurnerCollie & Braden Inc.
 ENGINEERS • PLANNERS • PROJECT MANAGERS

Unit	A103	Scale: Horz. 1"=50' Vert. 1"=5'	Date	JANUARY 1999
Designed	TCB	Checked	V.S.	Job No. 15-97925-100
Drawn	TCB	Approved		SHEET 9 OF 31



FILE NAME: I:\ES\SMALL\JOB\... DATE: