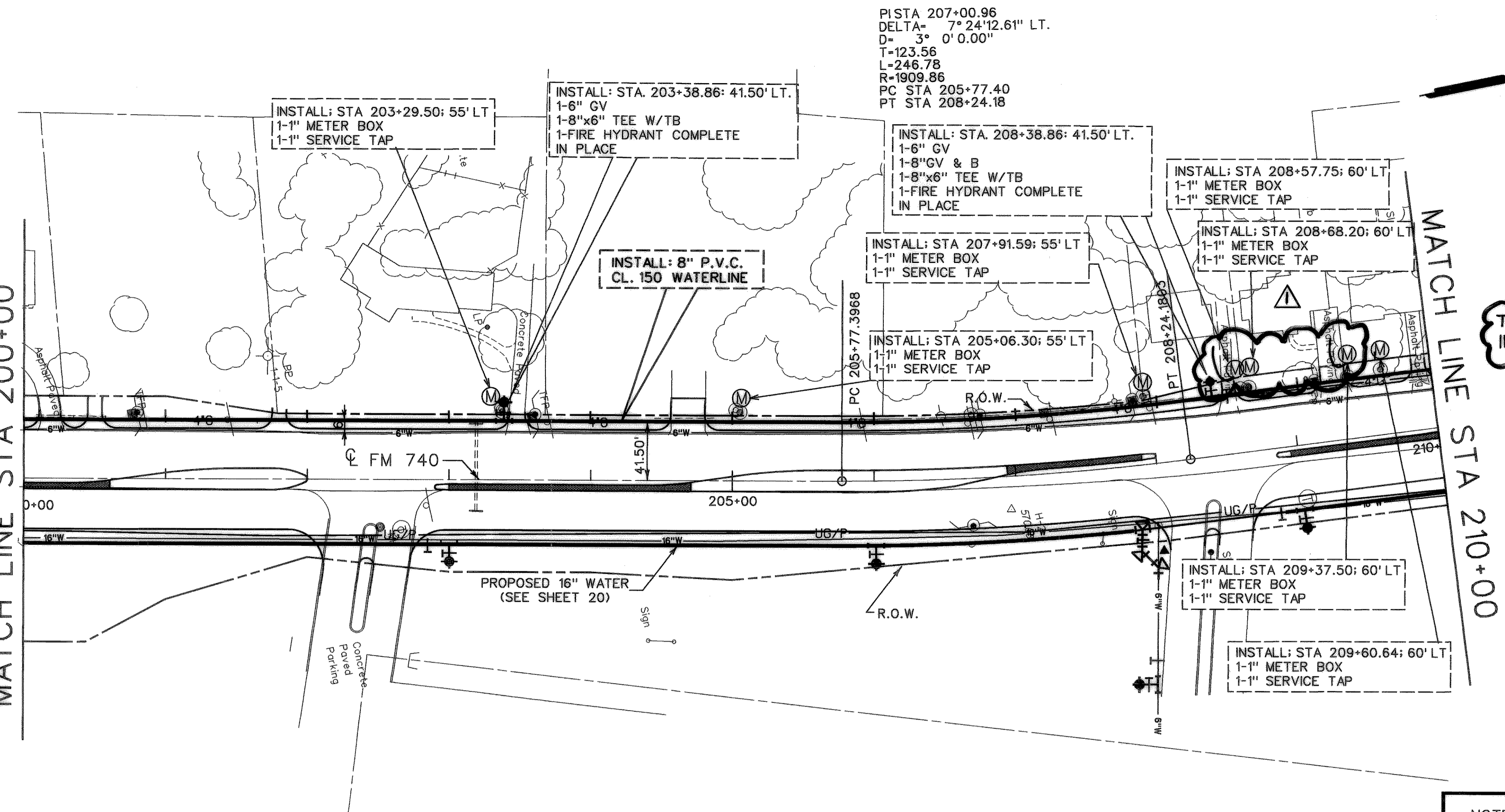
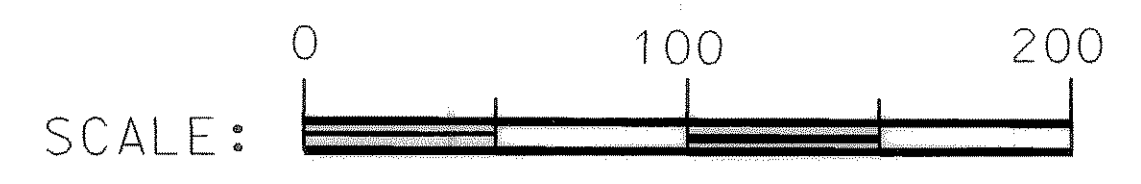


MATCH LINE STA 200+00



PISTA 207+00.96
 DELTA= 7° 24' 12.61" LT.
 D= 3° 0' 0.00"
 T=123.56
 L=246.78
 R=1909.86
 PC STA 205+77.40
 PT STA 208+24.18



TWO EX WATER SERVICES
 IN ASPHALT PAVING

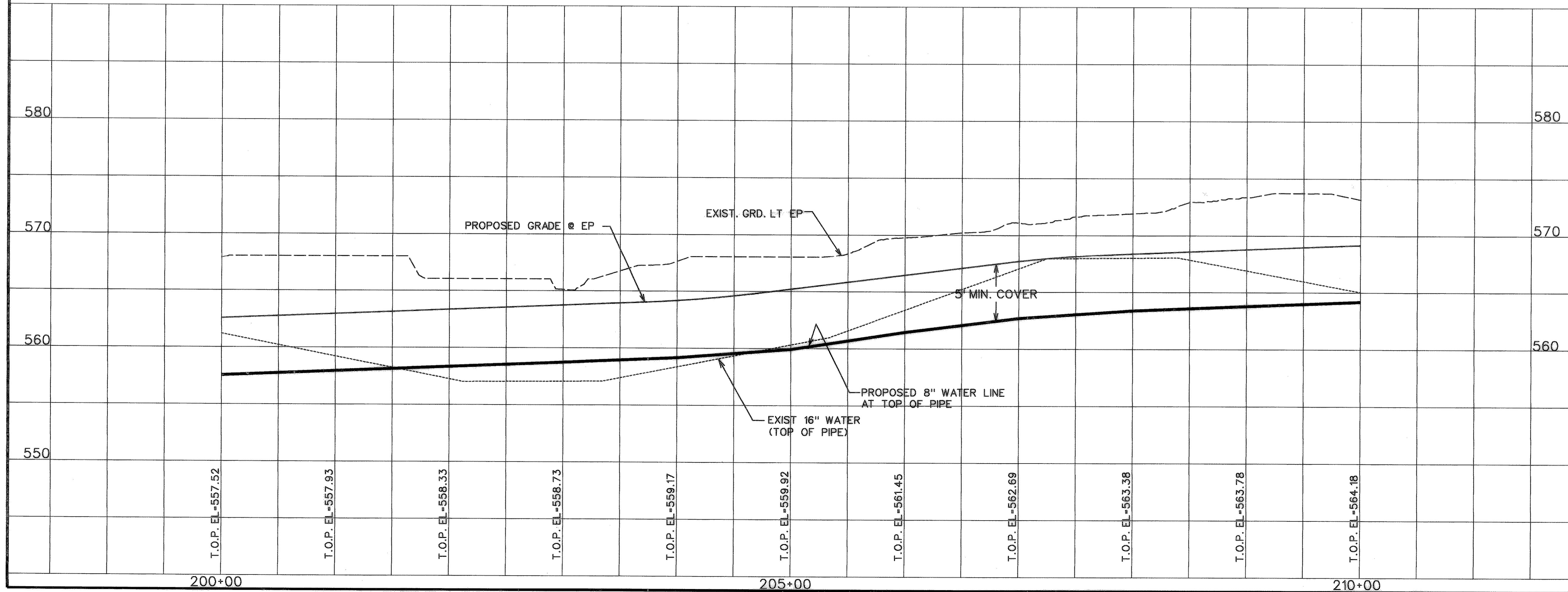
NOTE:
 ABANDON EXISTING 6" WATERLINE
 IN PLACE.

RECORD DRAWING
 VERIFIED BY *Doranique Lima*
 DATE 4-20-00

RECORD DRAWING

STATE OF TEXAS
 VORANIQUE V. SIMON
 8638
 LICENSED PROFESSIONAL ENGINEER
Voranique Simon
 04-19-00

STATE OF TEXAS
 ROBERT C. REACH
 48587
Robert C. Reach
 1-14-99



CITY OF ROCKWALL
 "THE NEW HORIZON"

**UTILITY RELOCATIONS
 FOR FM 740 WIDENING**

UTILITY PLAN AND PROFILE
PROPOSED 8" WATER LINE
 STA. 200+00 TO STA. 210+00

TurnerCollie & Braden Inc.
 ENGINEERS • PLANNERS • PROJECT MANAGERS

Unit	A103	Scale: Horz. 1"=50'	Vert. 1"=5'	Date	JANUARY 1999
Designed	TCB	Checked	V.S.	Job No.	15-97925-100
Drawn	TCB	Approved	<i>TCB</i>		SHEET 13 OF 31