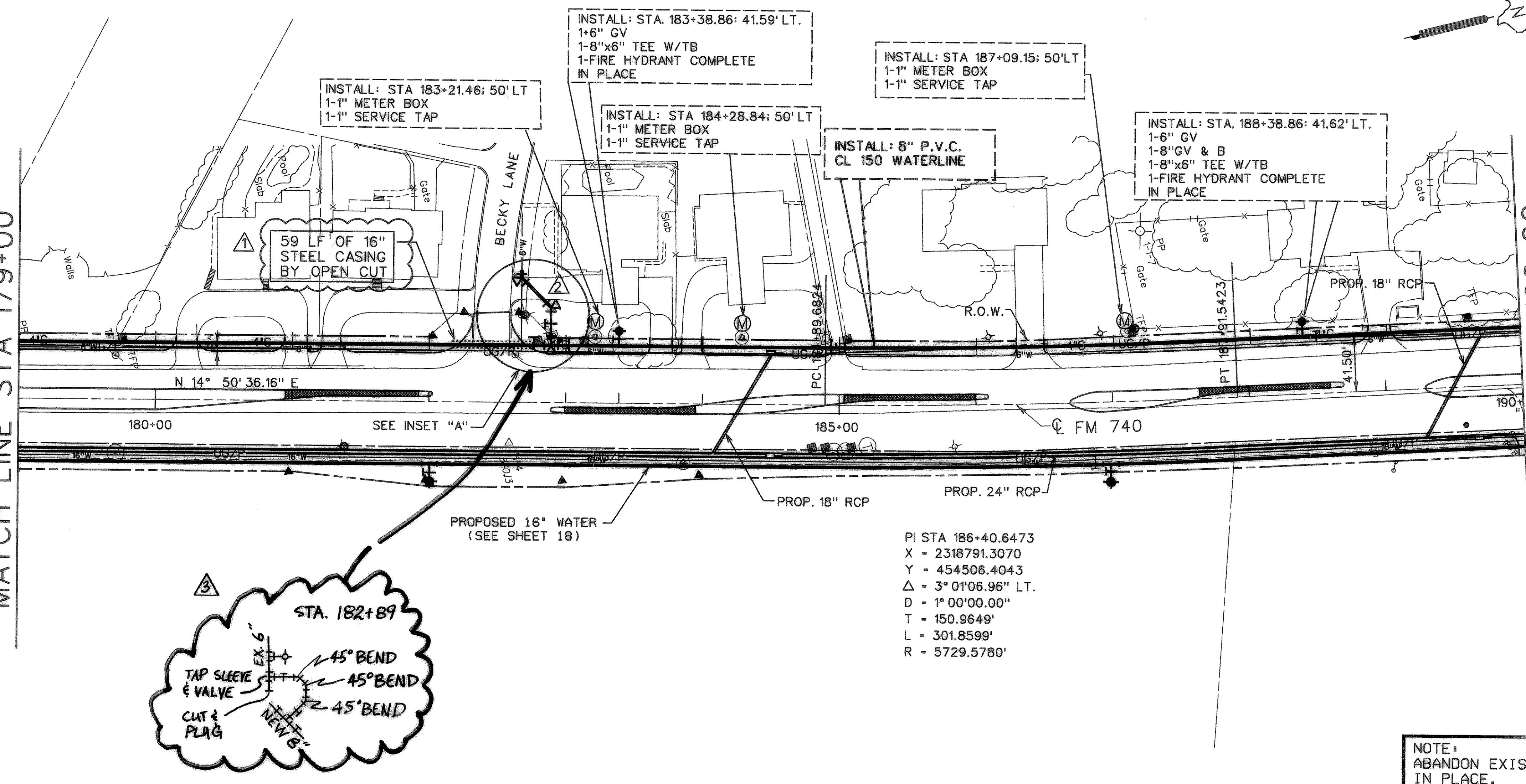


MATCH LINE STA 179+00

MATCH LINE STA 190+00



INSTALL: STA 183+21.46; 50' LT
1-1" METER BOX
1-1" SERVICE TAP

INSTALL: STA 183+38.86; 41.59' LT.
1-6" GV
1-8"x6" TEE W/TB
1-FIRE HYDRANT COMPLETE
IN PLACE

INSTALL: STA 187+09.15; 50' LT
1-1" METER BOX
1-1" SERVICE TAP

INSTALL: STA 184+28.84; 50' LT
1-1" METER BOX
1-1" SERVICE TAP

INSTALL: 8" P.V.C.
CL 150 WATERLINE

INSTALL: STA 188+38.86; 41.62' LT.
1-6" GV
1-8"GV & B
1-8"x6" TEE W/TB
1-FIRE HYDRANT COMPLETE
IN PLACE

59 LF OF 16" STEEL CASING BY OPEN CUT

N 14° 50' 36.16" E

180+00

SEE INSET "A"

185+00

FM 740

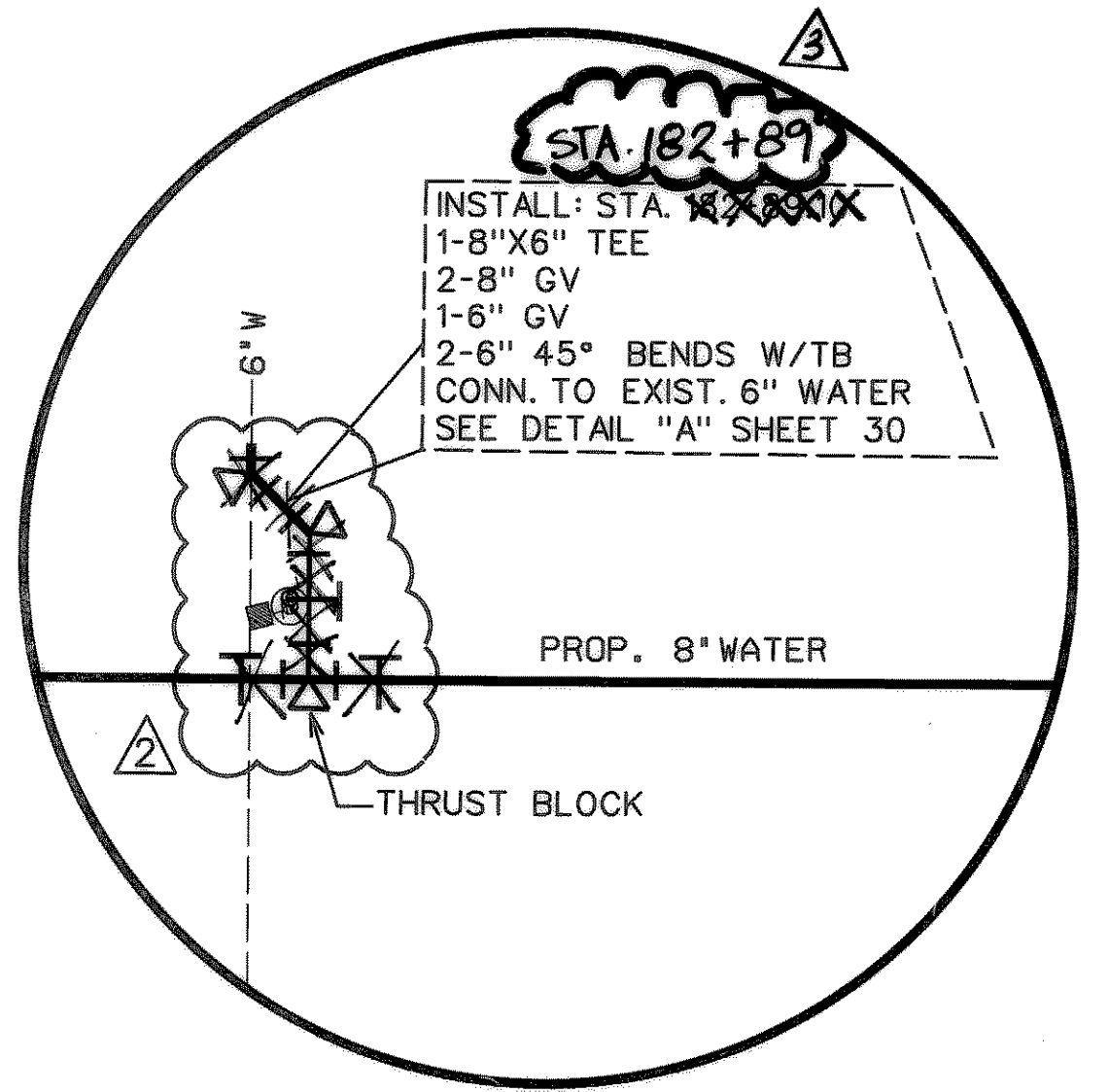
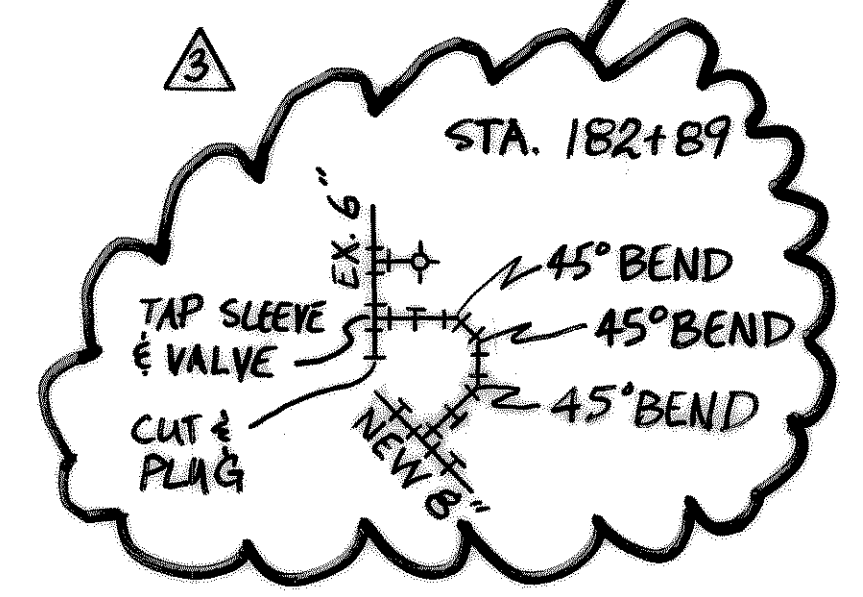
190+00

PROPOSED 16" WATER (SEE SHEET 18)

PROP. 18" RCP

PROP. 24" RCP

PI STA 186+40.6473
 X = 2318791.3070
 Y = 454506.4043
 Δ = 3° 01' 06.96" LT.
 D = 1° 00' 00.00"
 T = 150.9649'
 L = 301.8599'
 R = 5729.5780'

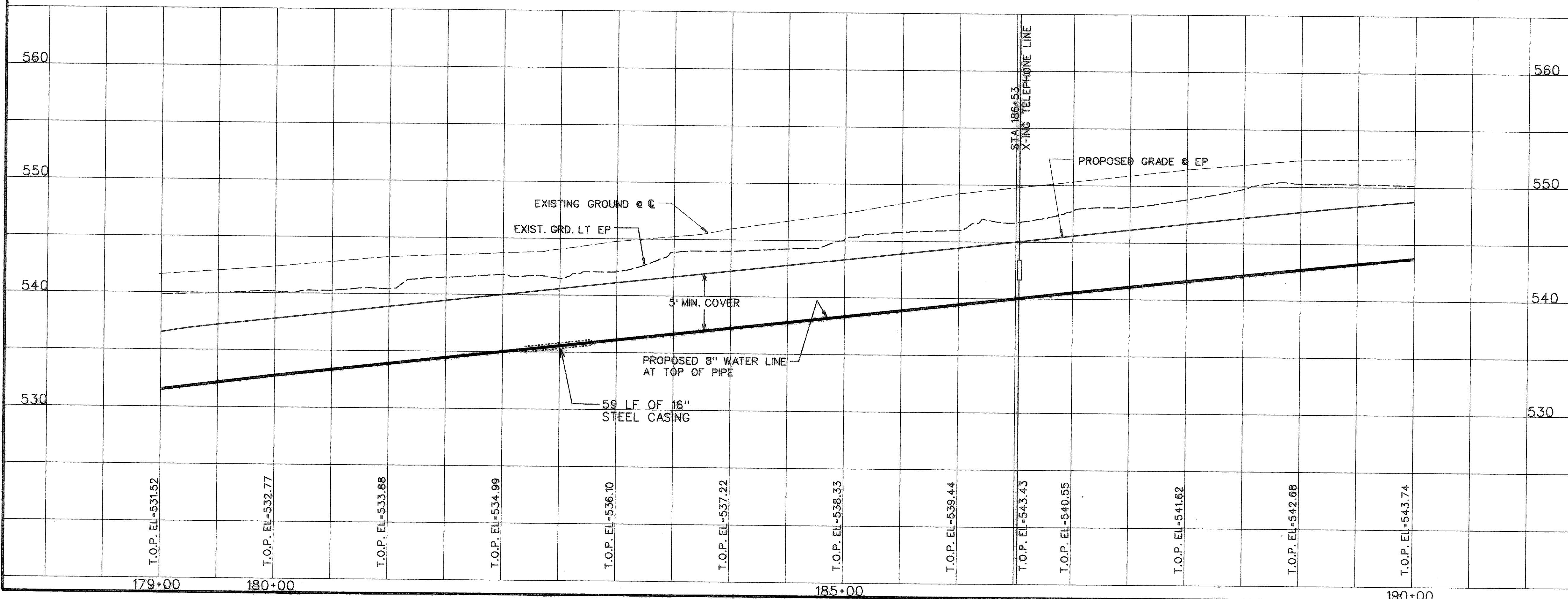


INSET "A"

NOTE: ABANDON EXISTING 6" WATERLINE IN PLACE.

RECORD DRAWING
 VERIFIED BY *Volantique Simon*
 DATE 4-20-00

- REVISION #1: CASING INSTALLATION TYPE ADDED
- REVISION #2: CONNECTION OF EXIST. 6" WATER TO 8" WATER WAS MOVED.



RECORD DRAWING

STATE OF TEXAS
 VORANTIQUE V SIMON
 88381
 LICENSED PROFESSIONAL ENGINEER
Volantique Simon
 4-19-00

STATE OF TEXAS
 ROBERT C REACH
 46581
 LICENSED PROFESSIONAL ENGINEER
Robert C Reach
 3-30-99

CITY OF ROCKWALL
 "THE NEW HORIZON"

UTILITY RELOCATIONS
 FOR FM 740 WIDENING

UTILITY PLAN AND PROFILE
 PROPOSED 8" WATER LINE
 STA. 179+00 TO STA. 190+00

Turner Collie & Braden Inc.
 ENGINEERS • PLANNERS • PROJECT MANAGERS

Unit	A103	Scale: Horz. 1"=50' Vert. 1"=5'	Date	JANUARY 1999
Designed	TCB	Checked	V.S.	Job No. 15-97925-100
Drawn	TCB	Approved		SHEET 11 OF 31