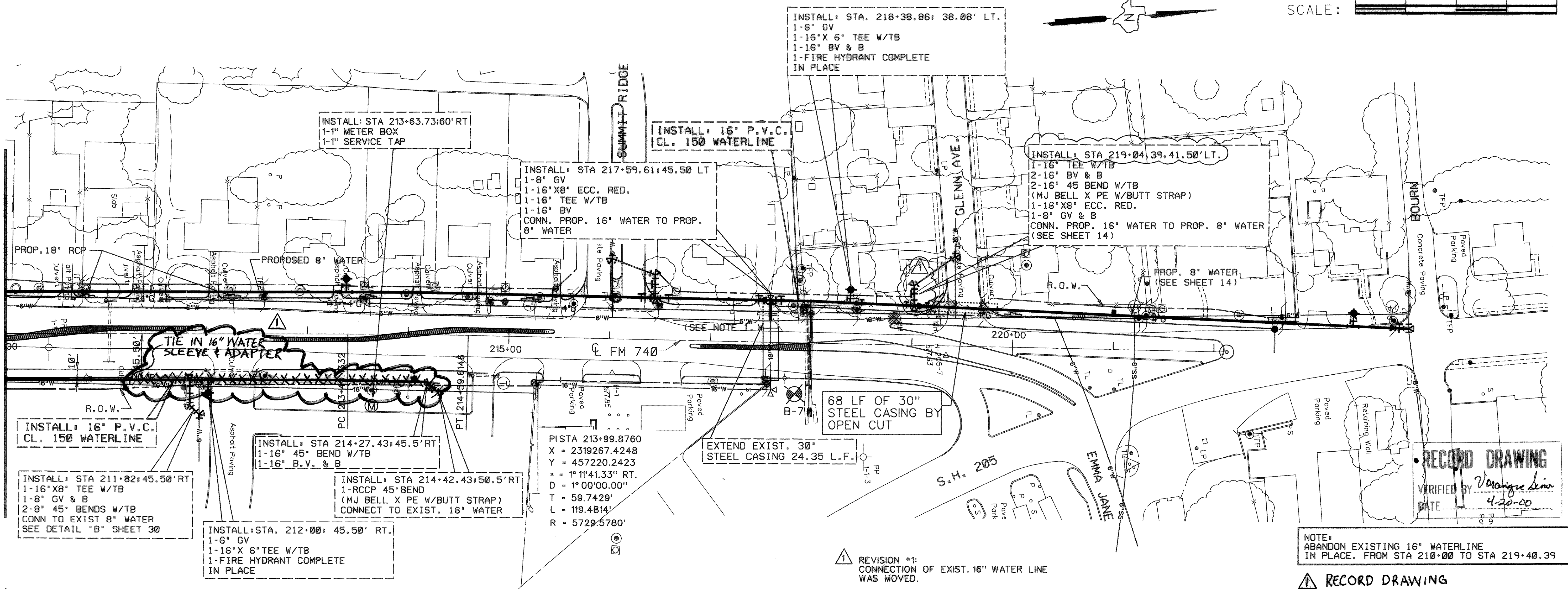


MATCH LINE STA 210+00

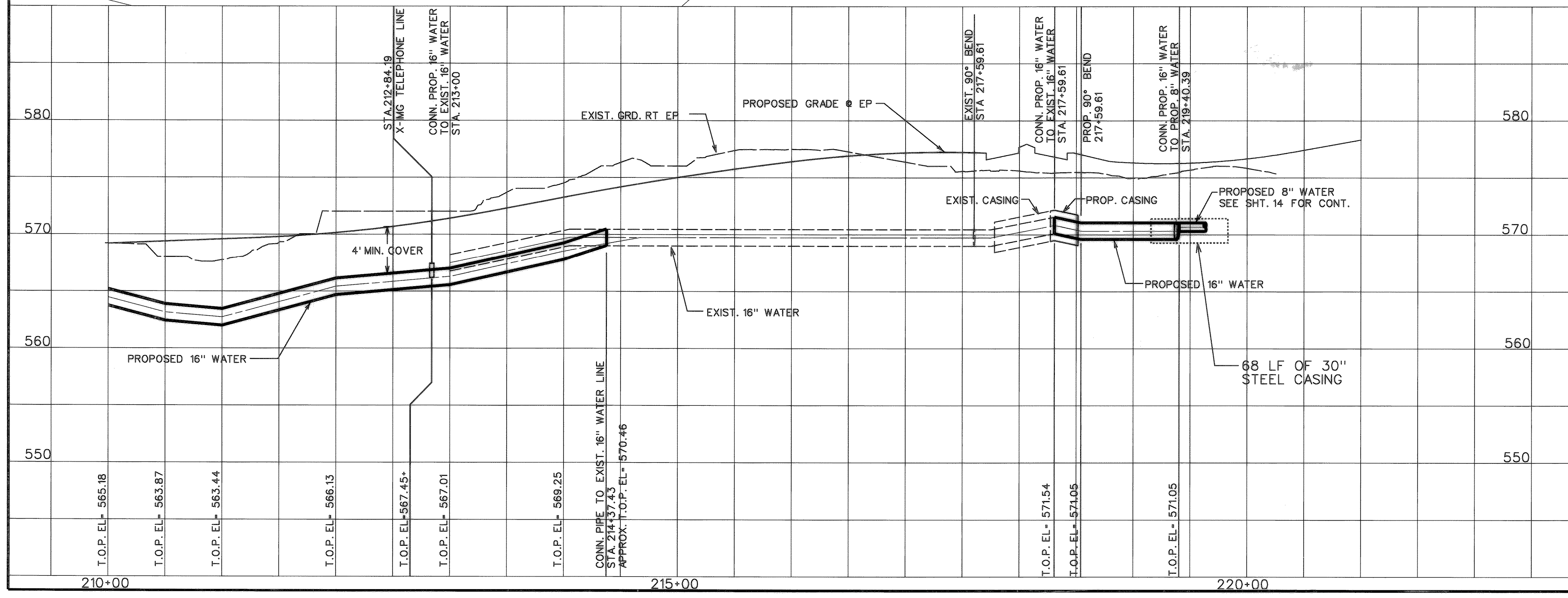


RECORD DRAWING
 VERIFIED BY *Vernique Simo*
 DATE 4-20-00

NOTE: ABANDON EXISTING 16" WATERLINE IN PLACE, FROM STA 210+00 TO STA 219+40.39

REVISION #1: CONNECTION OF EXIST. 16" WATER LINE WAS MOVED.

RECORD DRAWING



STATE OF TEXAS
 VERNIQUE V. SIMO
 88381
 LICENSED PROFESSIONAL ENGINEER
Vernique Simo
 4-19-00

STATE OF TEXAS
 ROBERT C. BEACH
 45387
 LICENSED PROFESSIONAL ENGINEER
Robert C. Beach
 3-30-00

CITY OF ROCKWALL
 "THE NEW HORIZON"

UTILITY RELOCATIONS
 FOR FM 740 WIDENING

UTILITY PLAN AND PROFILE
 PROPOSED 16" WATER LINE
 STA. 210+00 TO STA. 222+50

TurnerCollie & Braden Inc.
 ENGINEERS • PLANNERS • PROJECT MANAGERS

Unit	A103	Scale	Horz. 1"=50' Vert. 1"=5'	Date	JANUARY 1999
Designed	TCB	Checked	V.S.	Job No.	15-97925-100
Drawn	TCB	Approved			SHEET 21 OF 31

FILENAME: p:\rockwall\114925\114925.dwg DATE: 1/19/99