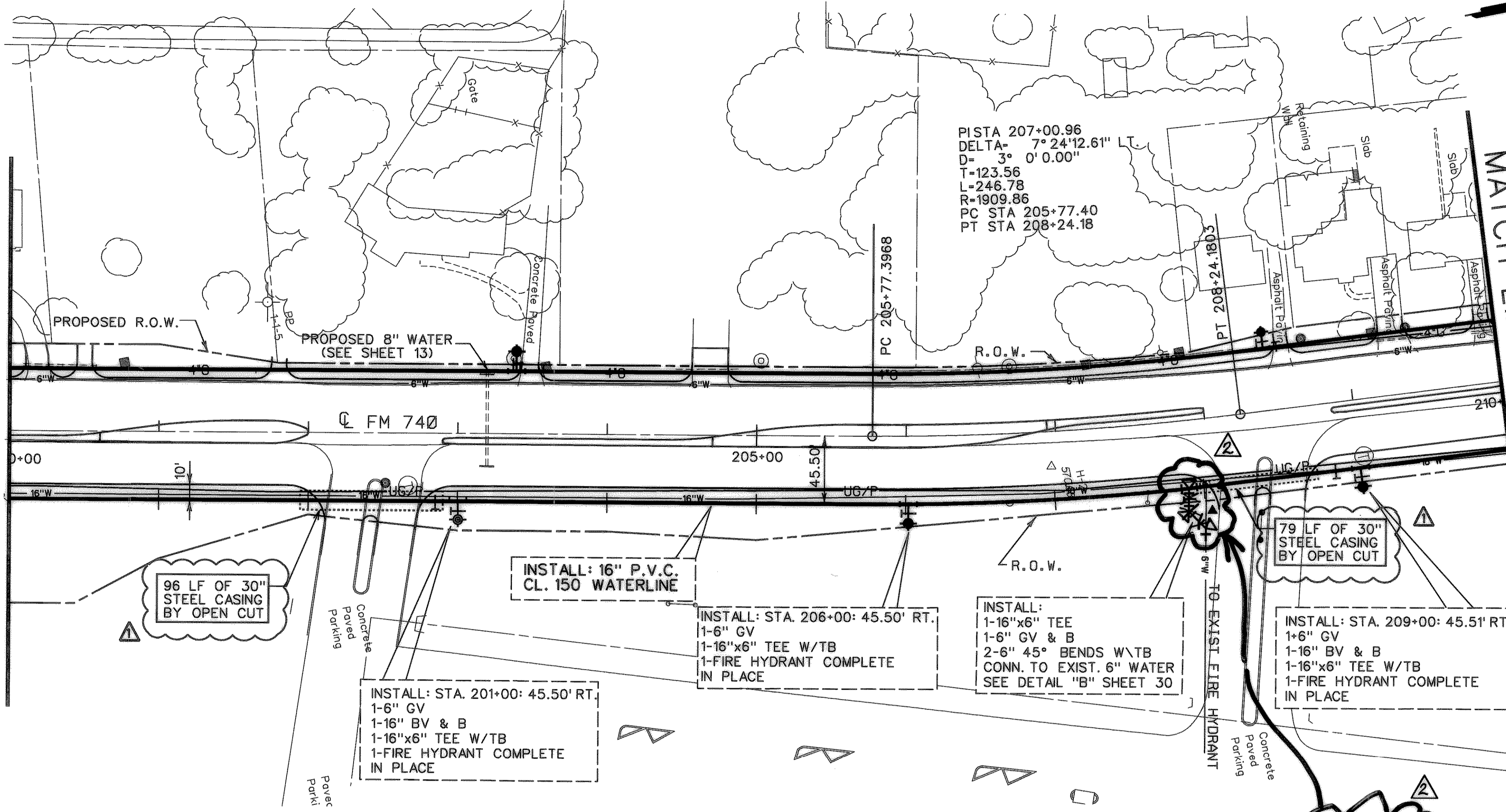


MATCH LINE STA 200+00

MATCH LINE STA 210+00

PISTA 207+00.96  
 DELTA= 7° 24' 12.61" LT.  
 D= 3' 0' 0.00"  
 T=123.56  
 L=246.78  
 R=1909.86  
 PC STA 205+77.40  
 PT STA 208+24.18



**RECORD DRAWING**  
 VERIFIED BY *Voranique Simon*  
 DATE 4-20-00

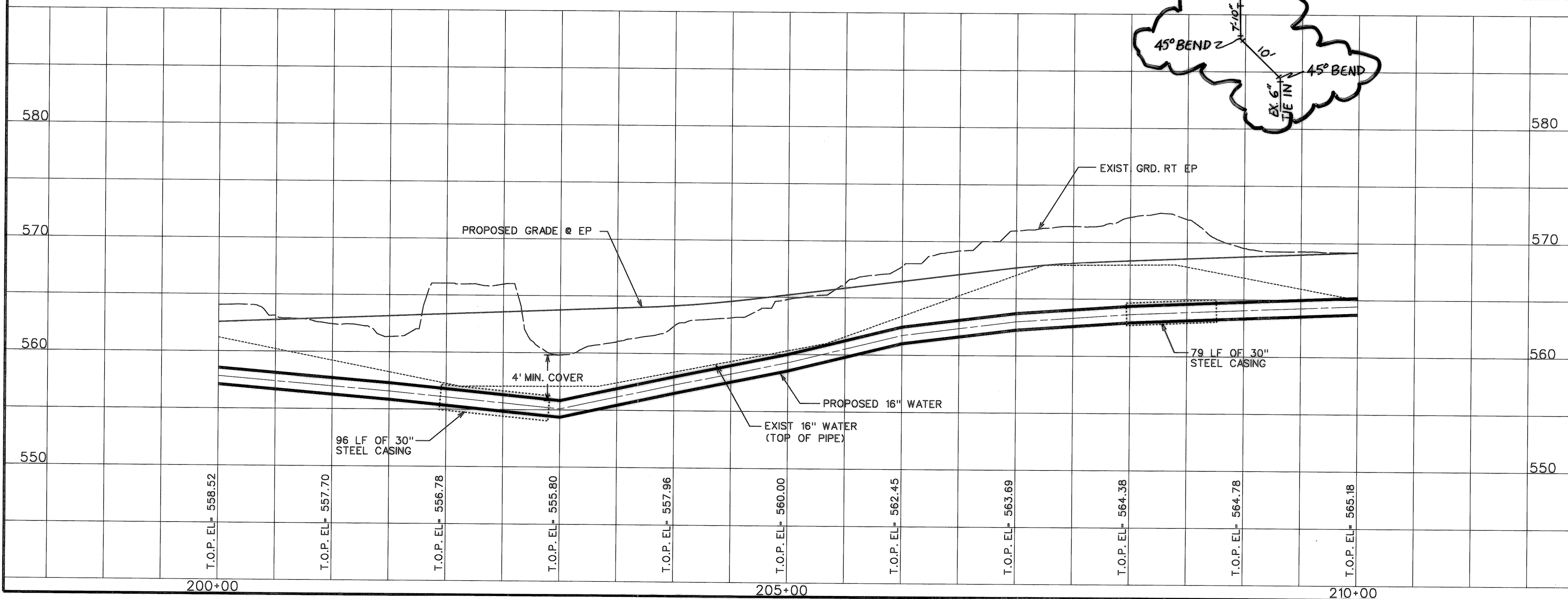
NOTE:  
 ABANDON EXISTING 16" WATERLINE IN PLACE.  
 FROM STA 200+00 TO STA 210+00

REVISION #1:  
 CASING INSTALLATION TYPE ADDED

RECORD DRAWING

STATE OF TEXAS  
 VORANIQUE V. SIMON  
 9881  
 LICENSED PROFESSIONAL ENGINEER  
*Voranique Simon*  
 4-19-00

STATE OF TEXAS  
 ROBERT C. REACH  
 48587  
*Robert C. Reach*  
 3-30-99



**CITY OF ROCKWALL**  
 "THE NEW HORIZON"

UTILITY RELOCATIONS  
 FOR FM 740 WIDENING

UTILITY PLAN AND PROFILE  
 PROPOSED 16" WATER LINE  
 STA. 200+00 TO STA. 210+00

**TurnerCollie & Braden Inc.**  
 ENGINEERS • PLANNERS • PROJECT MANAGERS

Unit	A103	Scale: Horz. 1"=50'	Ver. 1"=5'	Date	JANUARY 1999
Designed	TCB	Checked	V. S.	Job No.	15-97925-100
Drawn	TCB	Approved			SHEET 20 OF 31