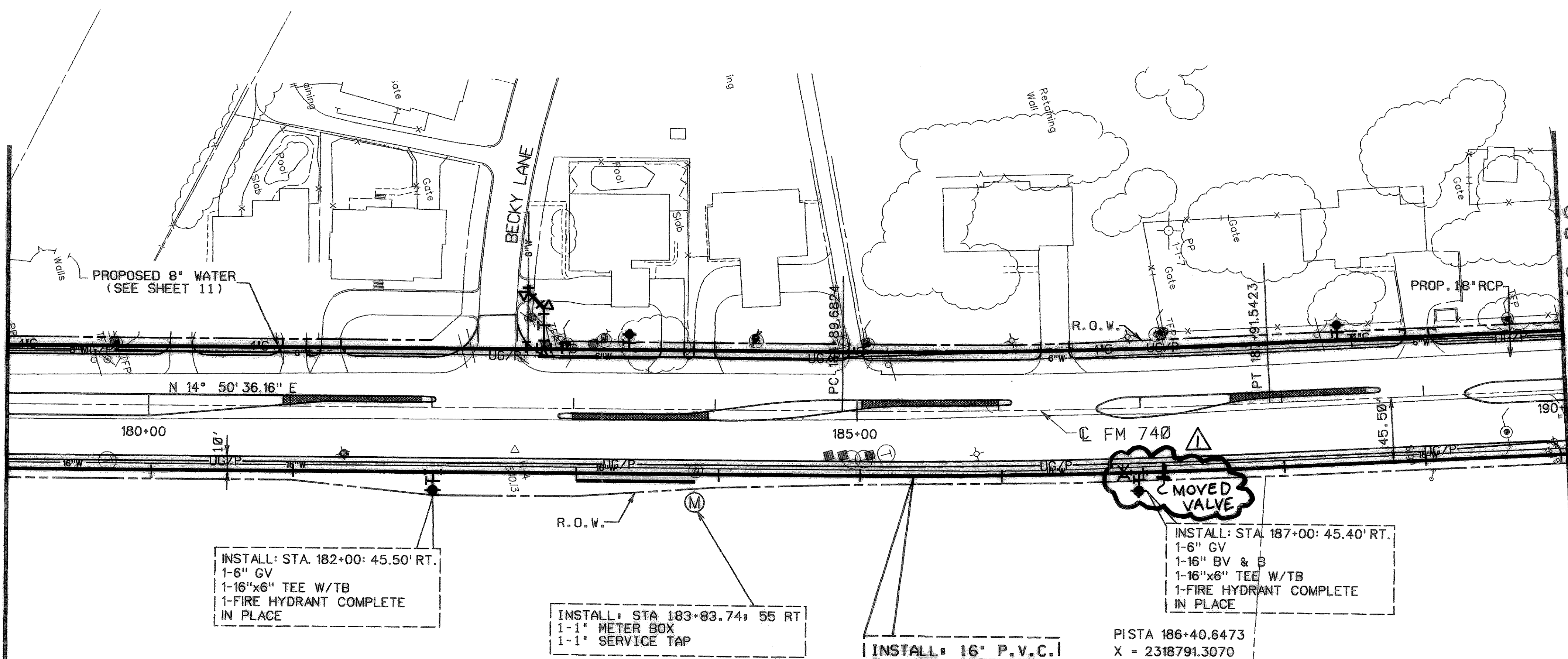


MATCH LINE STA 179+00

MATCH LINE STA 190+00



INSTALL: STA. 182+00: 45.50' RT.
1-6" GV
1-16"x6" TEE W/TB
1-FIRE HYDRANT COMPLETE
IN PLACE

INSTALL: STA 183+83.74: 55 RT
1-1" METER BOX
1-1" SERVICE TAP

INSTALL: 16" P.V.C.
CL. 150 WATERLINE

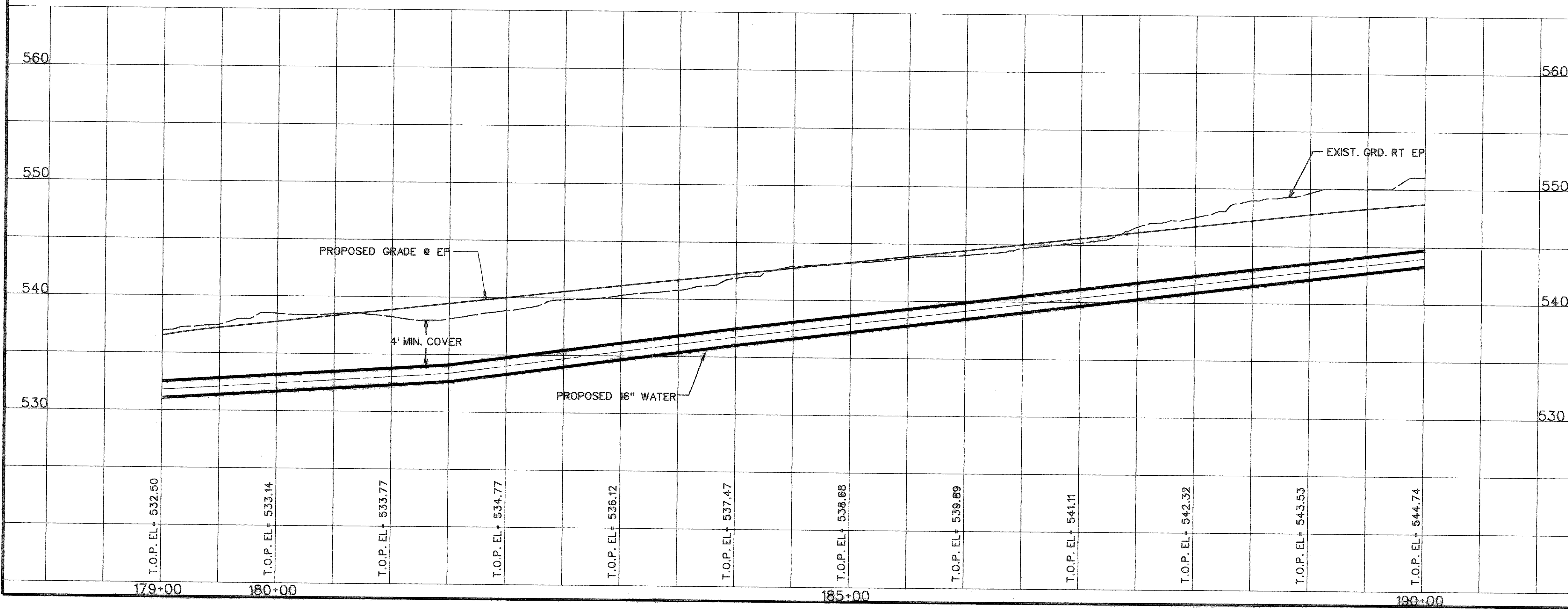
INSTALL: STA 187+00: 45.40' RT.
1-6" GV
1-16" BV & B
1-16"x6" TEE W/TB
1-FIRE HYDRANT COMPLETE
IN PLACE

PISTA 186+40.6473
X = 2318791.3070
Y = 454506.4043
- - 3° 01' 06.96" LT.
D = 1° 00' 00.00"
T = 150.9649'
L = 301.8599'
R = 5729.5780'

RECORD DRAWING
VERIFIED BY *Voranique Simon*
DATE *4-20-00*

NOTE:
ABANDON EXISTING 16" WATERLINE IN PLACE.
FROM STA 179+00 TO STA 190+00

△ RECORD DRAWING



STATE OF TEXAS
VORANIQUE SIMON
8688
LICENSED PROFESSIONAL ENGINEER
Voranique Simon
4-19-00

STATE OF TEXAS
ROBERT C. REACH
4857
Robert C. Reach
1-14-99

CITY OF ROCKWALL
"THE NEW HORIZON"

**UTILITY RELOCATIONS
FOR FM 740 WIDENING**

UTILITY PLAN AND PROFILE
PROPOSED 16" WATER LINE
STA. 179+00 TO STA. 190+00

Turner Collier & Braden Inc.
ENGINEERS • PLANNERS • PROJECT MANAGERS

Unit	A103	Scale: Horz.	1"=50'	Date	JANUARY 1999
Designed	TCB	Checked	V.S.	Job No.	15-97925-100
Drawn	TCB	Approved	<i>TCB</i>		SHEET 18 OF 31