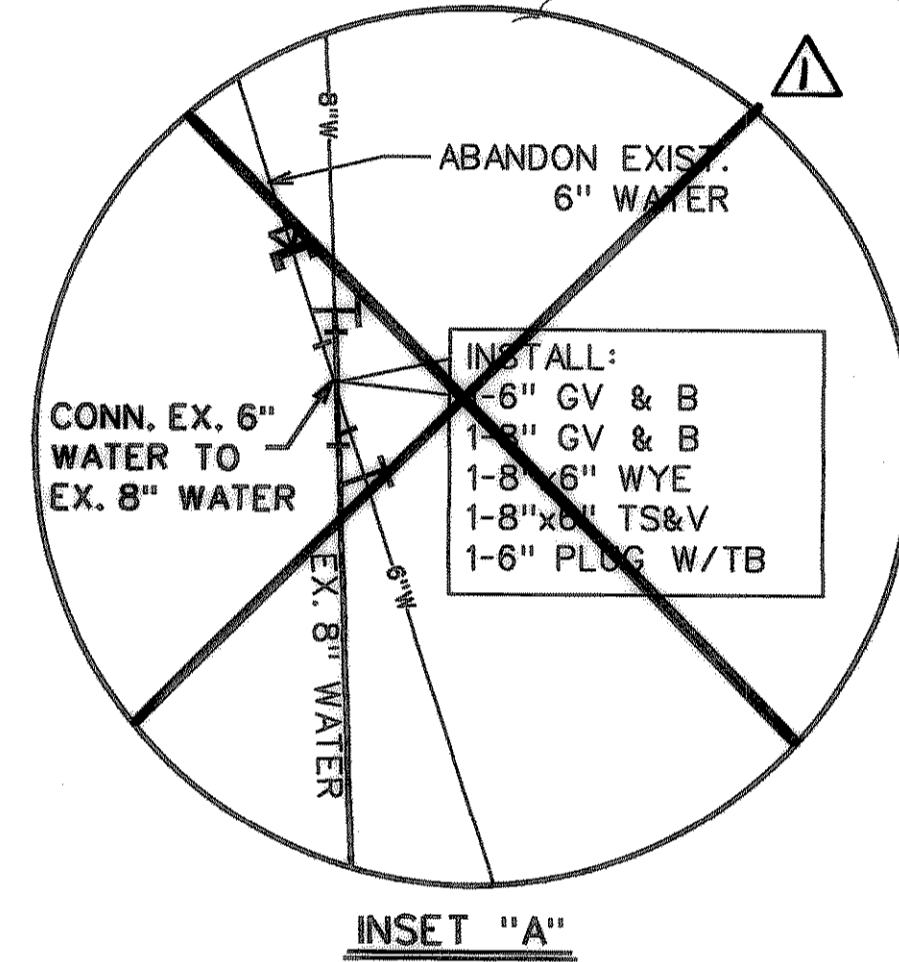
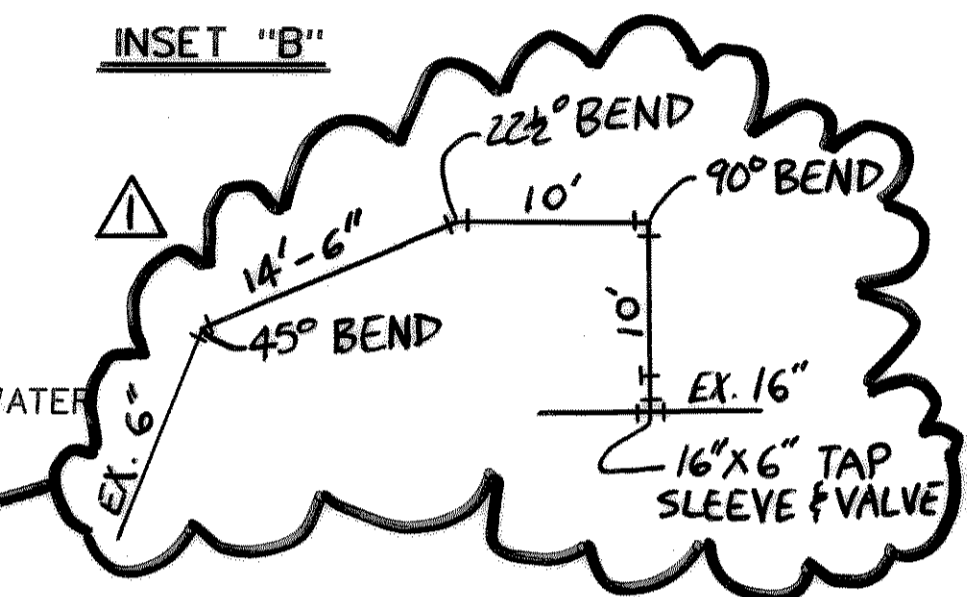
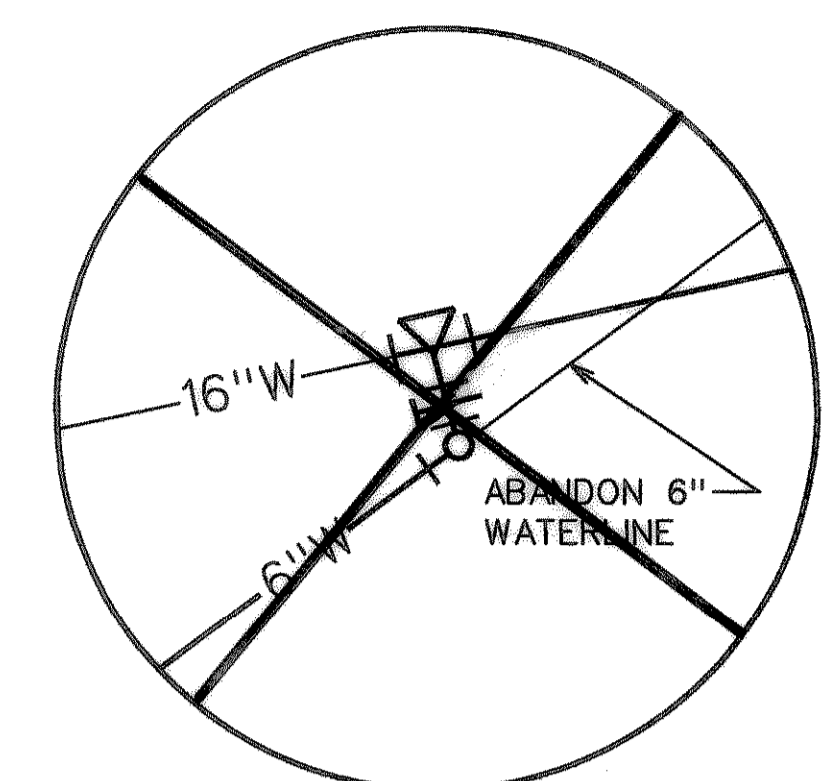
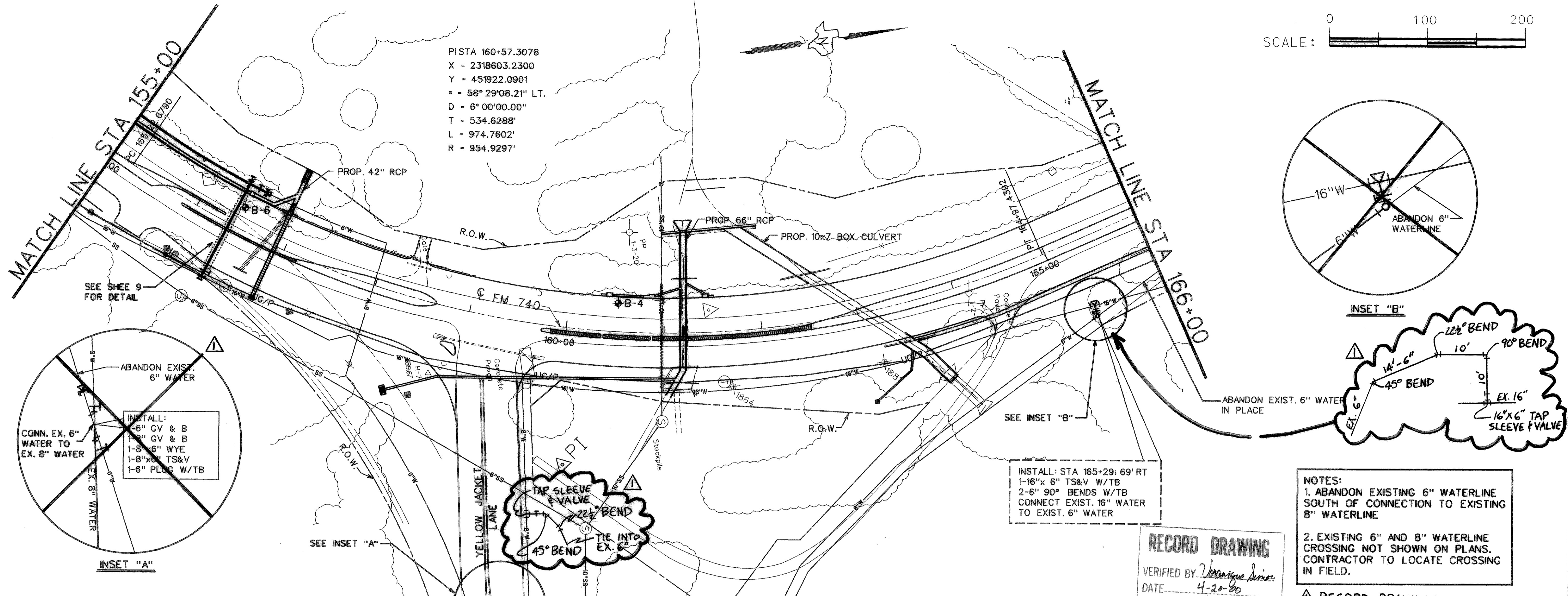


PISTA 160+57.3078
 X - 2318603.2300
 Y - 451922.0901
 = 58° 29'08.21" LT.
 D - 6° 00'00.00"
 T - 534.6288'
 L - 974.7602'
 R - 954.9297'

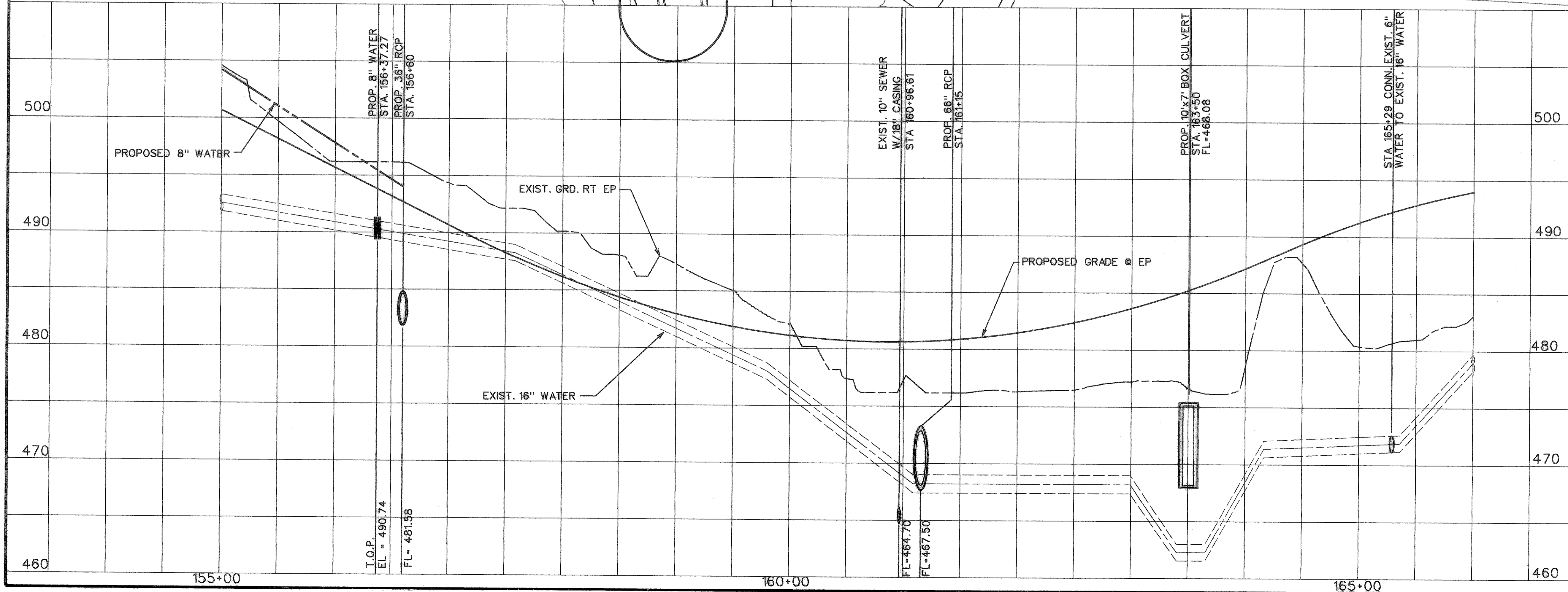


INSTALL: STA 165+29: 69' RT
 1-16" x 6" TS&V W/TB
 2-6" 90° BENDS W/TB
 CONNECT EXIST. 16" WATER
 TO EXIST. 6" WATER

NOTES:
 1. ABANDON EXISTING 6" WATERLINE SOUTH OF CONNECTION TO EXISTING 8" WATERLINE
 2. EXISTING 6" AND 8" WATERLINE CROSSING NOT SHOWN ON PLANS. CONTRACTOR TO LOCATE CROSSING IN FIELD.

RECORD DRAWING
 VERIFIED BY *Voraniqne Simon*
 DATE 4-20-99

RECORD DRAWING



STATE OF TEXAS
 VORANIQNE SIMON
 LICENSED PROFESSIONAL ENGINEER
 06388
Voraniqne Simon
 4-19-99

STATE OF TEXAS
 ROBERT C. REACH
 LICENSED PROFESSIONAL ENGINEER
 48587
Robert C. Reach
 1-14-99

CITY OF ROCKWALL
 "THE NEW HORIZON"

UTILITY RELOCATIONS FOR FM 740 WIDENING

UTILITY PLAN AND PROFILE
PROPOSED 16" WATER LINE
 STA. 155+00 TO STA. 166+00

TurnerCollie & Braden Inc.
 ENGINEERS • PLANNERS • PROJECT MANAGERS

Unit	A103	Scale: Horz. 1"=50'	Vert. 1"=5'	Date	JANUARY 1999
Designed	TCB	Checked	V.S.	Job No.	15-97925-100
Drawn	TCB	Approved	<i>[Signature]</i>		SHEET 16 OF 31

P:\ROCKWALL\FM-740\DRAWINGS\PP16-4.DGN