

INSET "A"

RECORD DRAWING

VERIFIED BY *Voranique Simon*

DATE 4-20-00

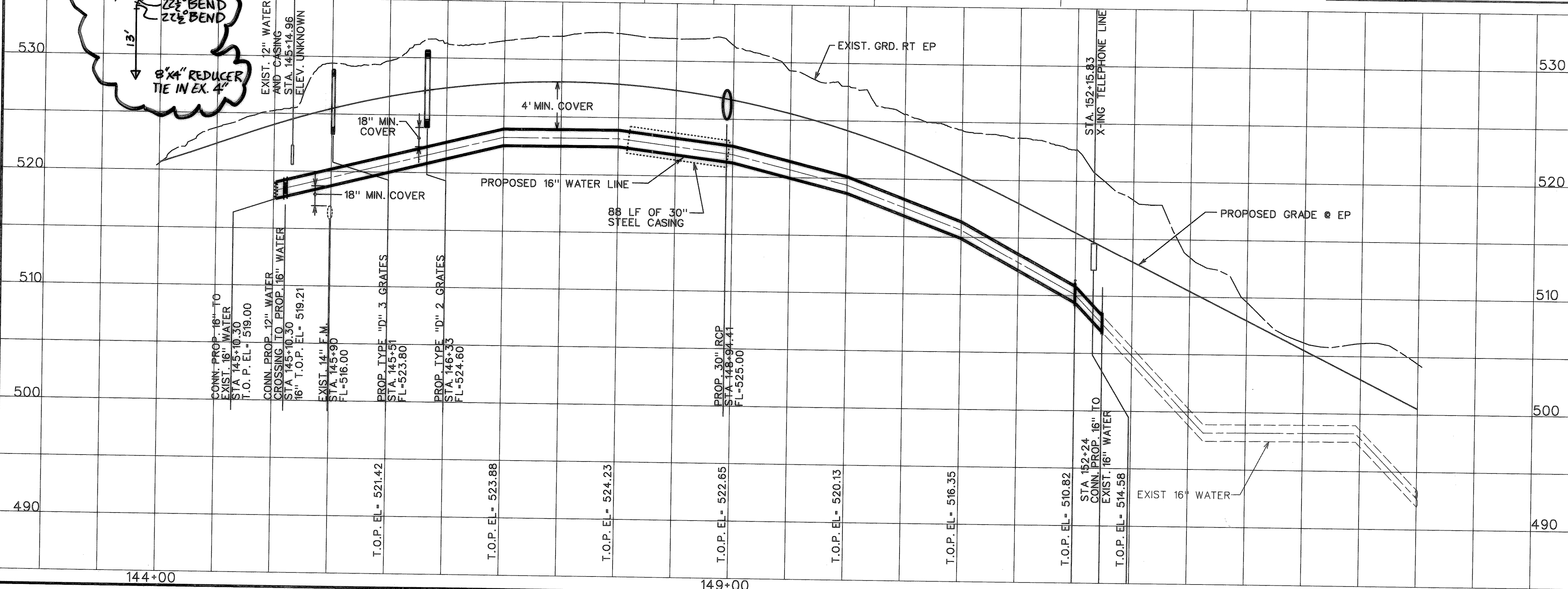
- ⚠ REVISION #1: CASING INSTALLATION TYPE ADDED
- ⚠ REVISION #2: CONNECTION OF EXIST. 8" WATER WAS MOVED
- ⚠ REVISION #3: FIRE HYDRANT WAS MOVED

NOTE:
ABANDON EXIST. 16" WATERLINE
IN PLACE FROM STA 145+10.30 TO STA 152+24

RECORD DRAWING

STATE OF TEXAS
VORANIQUE V. SIMON
REGISTERED PROFESSIONAL ENGINEER
NO. 48587
Voranique Simon
4-19-00

STATE OF TEXAS
ROBERT C. BEACH
REGISTERED PROFESSIONAL ENGINEER
NO. 48587
Robert C. Beach
3-30-99



CITY OF ROCKWALL
"THE NEW HORIZON"

UTILITY RELOCATIONS FOR FM 740 WIDENING

UTILITY PLAN AND PROFILE
PROPOSED 16" WATER LINE
STA. 144+00 TO STA. 155+00

TurnerCollie & Braden Inc.
ENGINEERS • PLANNERS • PROJECT MANAGERS

Unit	A103	Scale:	Horz. 1"=50'	Vert. 1"=5'	Date	JANUARY 1999
Designed	TCB	Checked	V.S.	Approved	Job No.	15-97925-100
Drawn	TCB	Approved				SHEET 15 OF 31