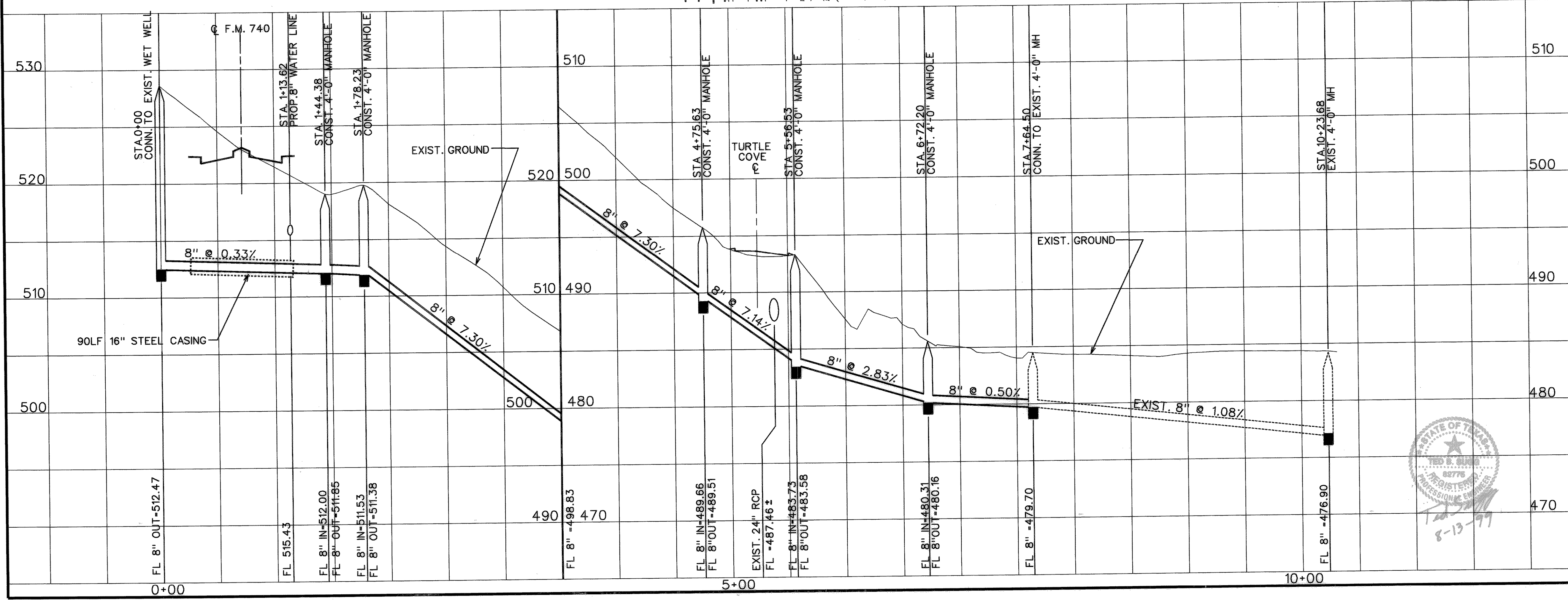


**GENERAL NOTES**

- LIFT STATION REMOVAL AND SALVAGE CONSISTS OF:
  - REMOVAL OF PUMPS, APPURTENANCES, ELECTRICAL EQUIPMENT AND CONTROL PANEL AND DELIVERY TO LOCATION IDENTIFIED BY CITY OF ROCKWALL
  - COORDINATION OF REMOVAL OF ELECTRICAL SERVICE BY TU ELECTRIC
  - REMOVAL OF ALL PANEL SUPPORTS AND FOUNDATIONS
  - REMOVAL OF ANY ACCUMULATED GRIT IN WETWELL AND PLACEMENT OF INSIDE DROP CONNECTIONS AS SHOWN IN DETAIL ON SHEET 28.
  - DISCONNECT 2, 4" FORCE MAINS OUTSIDE WETWELL AND PERMANENTLY PLUG.
  - PLUG WETWELL WALL PENETRATIONS
  - SITE RESTORATION.
- CONTRACTOR IS TO COORDINATE ALL WORK RELATED TO PHASING THE PROPOSED SEWER CONNECTIONS AS WELL AS THE REMOVAL AND SALVAGE OF THE LIFT STATION WITH THE CITY AND ALL AFFECTED PARTIES.
- CONTRACTOR IS TO FIELD VERIFY HORIZONTAL AND VERTICAL LOCATIONS OF ALL EXISTING PIPING, USE STD. FITTINGS AS REQUIRED TO MAKE CONNECTIONS TO THE EXISTING LINES.
- CONTRACTOR IS TO CONTACT CITY OF ROCKWALL 48 HRS PRIOR TO COMMENCING LIFT STATION REMOVAL.

**UNDERGROUND UTILITIES**  
 THE LOCATION OF EXISTING UTILITIES SHOWN ON THESE PLANS ARE APPROXIMATE AND BASED ON DATA FURNISHED BY UTILITY COMPANIES. IT IS THE RESPONSIBILITY OF THE CONTRACTOR TO LOCATE AND VERIFY ON-SITE THE UTILITIES THAT MAY CONFLICT WITH THE CONSTRUCTION.



**RECORD DRAWING**  
 VERIFIED BY *[Signature]*  
 DATE *4-20-99*

- 2 REALIGNMENT OF SANITARY SEWER FROM STA 1+44.38 TO STA 5+56.53
- 1 ADDED A MANHOLE, REVISED CONNECTION LOCATION
- REVISED SAN SEWER PROFILE

**CITY OF ROCKWALL**  
 "THE NEW HORIZON"

**UTILITY RELOCATIONS FOR FM 740 WIDENING**

UTILITY PLAN AND PROFILE  
**PROPOSED 8" SANITARY SEWER**

**TurnerCollie & Braden Inc.**  
 ENGINEERS • PLANNERS • PROJECT MANAGERS

Unit	A103	Scale:	Horz. 1"=50'	Vert. 1"=5'	Date	JANUARY 1999
Designed	TCB	Checked			Job No.	15-97925-100
Drawn	TCB	Approved				SHEET 22 OF 31

