

STATE OF TEXAS
DEPARTMENT OF TRANSPORTATION

PLANS OF PROPOSED
RIGHT OF WAY PROJECT
FARM TO MARKET 740
ROCKWALL COUNTY

ACCOUNT NO. 8018-02-051 CSJ NO. 1014-03-047
LIMITS FROM: F.M. 3097
TO: F.M. 1140
NET LENGTH OF PROJECT = 12,669.13 FEET = 2.399 MILES

FED. ROAD DIV. NO.	PROJECT NO.		SHEET NO.
6			1
STATE	DIST.	COUNTY	HIGHWAY NO.
TEXAS		ELLIS	FM 740
R. O. W.	COUNT.	SECT.	JOB
	1014	03	047
ACCOUNT	COUNT.	SECT.	JOB
	8018	02	051

INDEX OF SHEETS

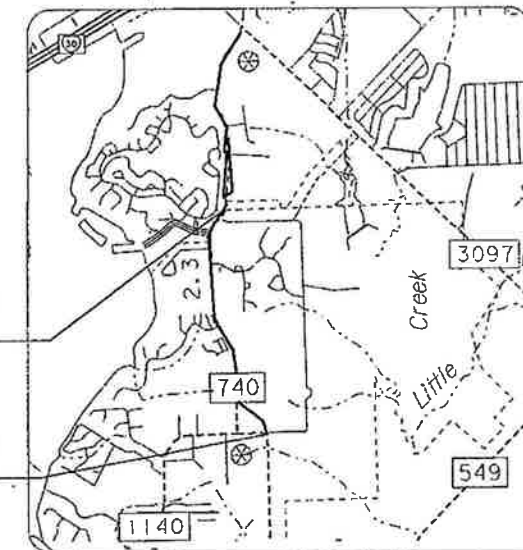
SHEET NO.	DESCRIPTION
1	TITLE SHEET
2	CONTROL SHEET
3-12	ROW PLAN SHEET

ALL BEARINGS ARE ON THE TEXAS STATE PLANE COORDINATE SYSTEM, NAD 83 (1993 Adj.) NORTH CENTRAL ZONE, ALL DISTANCES AND COORDINATES SHOWN ARE SURFACE AND MAY BE CONVERTED TO GRID BY DIVIDING BY TxDOT CONVERSION FACTOR OF 1.000146135

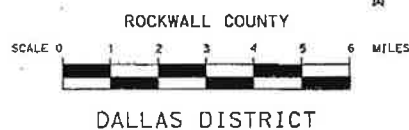
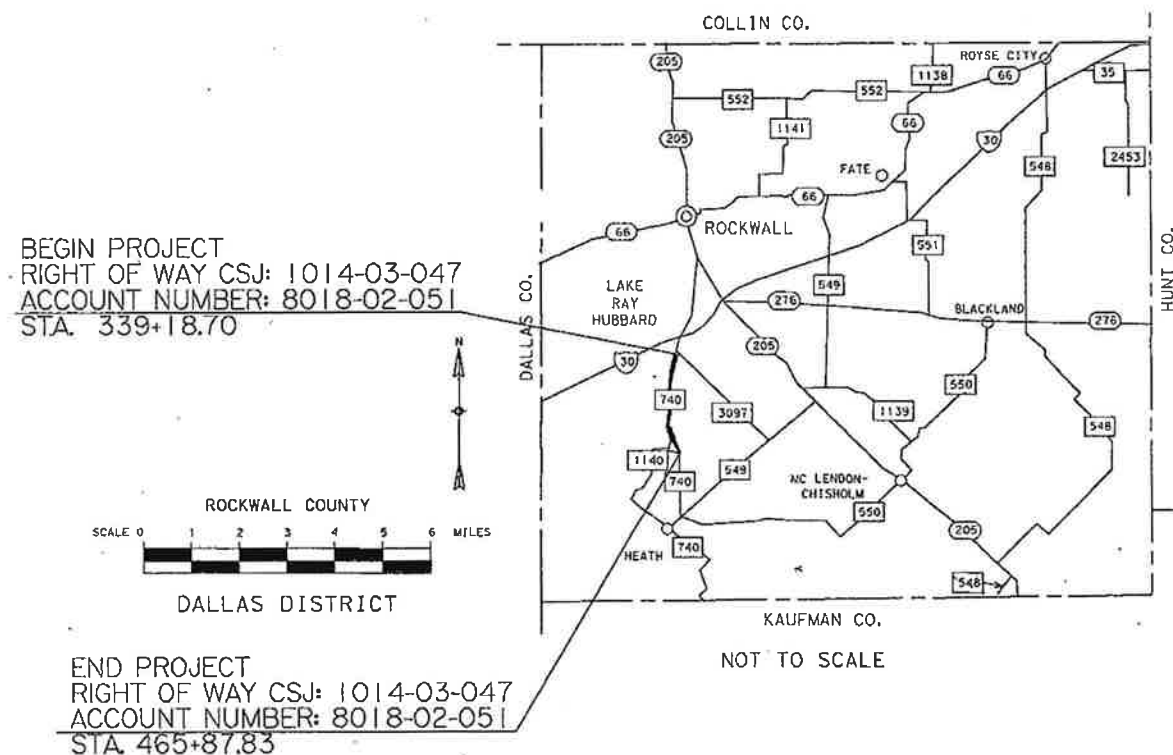
EQUATIONS:
NONE
NO EXCEPTIONS

BEGIN PROJECT
RIGHT OF WAY CSJ: 1014-03-047
ACCOUNT NUMBER: 8018-02-051
STA. 339+1870

END PROJECT
RIGHT OF WAY CSJ: 1014-03-047
ACCOUNT NUMBER: 8018-02-051
STA. 465+87.83



VICINITY MAP



NOT TO SCALE

LEGEND

- EXIST. ROW LINE
- NEW ROW LINE
- PROPERTY LINE
- COUNTY LINE
- CONTROL OF ACCESS LINE
- SURVEY LINE
- FENCE
- CITY LIMITS
- RAILROAD STRUCTURE
- IRON ROD SET UNLESS OTHERWISE NOTED
- PARCEL NUMBER



LAYOUT SCALE: 1 INCH = 50 FEET

RECOMMENDED FOR ACQUISITION
OF RIGHT OF WAY July 18, 2003

Samuel B. [Signature]
DISTRICT SURVEYOR (MAPPING)

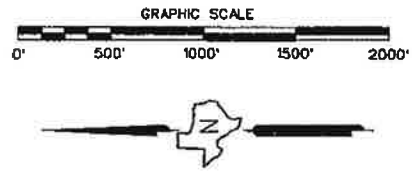
RECOMMENDED FOR ACQUISITION
OF RIGHT OF WAY July 28, 2003

Paul G. Williams, P.E.
AREA ENGINEER

FINAL APPROVAL _____ 20__

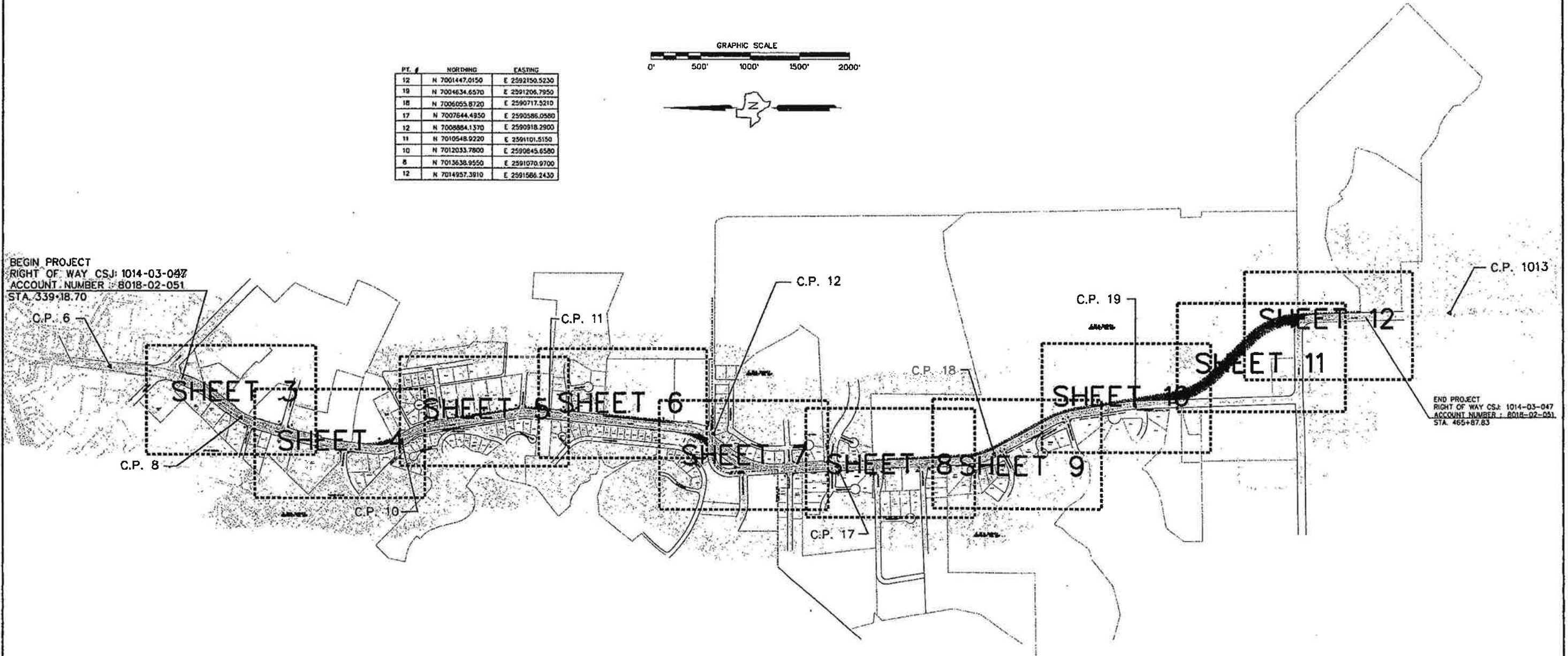
DISTRICT ENGINEER

PT. #	NORTHING	EASTING
12	N 7001447.0150	E 2592150.5230
10	N 7004634.6570	E 2591206.7950
18	N 7006055.8720	E 2590717.5210
17	N 7007644.4950	E 2590586.0580
12	N 7008884.1370	E 2590918.2900
11	N 7010548.9220	E 2591101.5150
10	N 7012033.7800	E 2590845.6580
8	N 7013638.9550	E 2591070.9700
12	N 7014957.3910	E 2591566.2430



BEGIN PROJECT
 RIGHT OF WAY CSJ: 1014-03-047
 ACCOUNT NUMBER: 8018-02-051
 STA. 339+18.70

END PROJECT
 RIGHT OF WAY CSJ: 1014-03-047
 ACCOUNT NUMBER: 8018-02-051
 STA. 465+87.83



REVISED 07-28-06					
STATE	FEDERAL AID PROJECT NO.	HIGHWAY NO.			
6 TEXAS		FM 747			
COUNTY	SECTION NO.	AR NO.	SHEET NO.		
18 ROCKWALL	1014	03	047	2	

E. TEAL SURVEY ABSTRACT NO. 207

6
REGENCYCENTERS, L.P.
DEED
VOL. PG.
312 S.F. (0.0072 ACRES)
REM - 98399 S.F.
(2.2589 ACRES) BLOCK A
LOT 1

7
TEMUNOVIC PETAR & CVIJETA
DEED
VOL. PG.
312 S.F. (0.0072 ACRES).
REM - 280,868 S.F.
(6.4478 ACRES)

10
PETAR & CVIJETA TEMUNOVIC
DEED
VOL. PG.
5952 S.F. (0.1366 ACRE)
REM - 274,966 S.F.
(6.3124 ACRE)

8
CALLED 6.455 ACRES
PETAR TEMUNOVIC and CVIJETA TEMUNOVIC
VOL. 959, PG. 150

9
REMAINDER OF
A CALLED 6.449 ACRES
PETAR TEMUNOVIC
and CVIJETA TEMUNOVIC
VOL. 915, PG. 50

11
CALLED
2.2881 ACRES
REGENCY
CENTERS, L.P.
VOL. 2280, PG. 155

12
BLOCK A
LOT 2

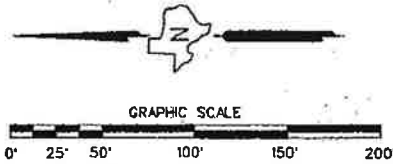
13
LOT 1
BLOCK A
ROCKWALL ASSISTED LIVING ADDITION
CABINET D, SLIDE B5
P.R.R.C.T.

14
FM/740 ROCKWALL, LTD.
VOL. 1277, PG. 199

E. TEAL SURVEY ABSTRACT NO. 207

15
FM740 ROCKWALL LTD.
DEED
VOL. PG.
312 S.F. (0.0072 ACRE)
REM - 255,277 S.F.
(5.8603 ACRES)

16
COMMUNITY BANK OF ROCKWALL
DEED
VOL. PG.
516 S.F. (0.0118 ACRE)
REM - 43,497 S.F.
(0.9986 ACRE)



ALL BEARINGS ARE ON THE TEXAS STATE PLANE
COORDINATE SYSTEM, NAD 83 (1983, NAD 83)
NORTH CENTRAL ZONE. ALL DISTANCES AND
COORDINATES SHOWN ARE SURFACE AND MAY
BE CORRECTED TO GRID BY DIVISION BY 1+DOT
CONVERSION FACTOR OF 1.000146135

REVISED 07-28-06

STATE	FEDERAL PROJECT NO.	HIGHWAY NO.
6 TEXAS		FM 740
18 ROCKWALL	1014 03 047	4

8018-02-051

E. TEAL SURVEY
ABSTRACT NO. 207

CITY OF ROCKWALL
ALLEY DEDICATION
DEED
VOL. PG.
148 S.F. (0.0034 ACRES)

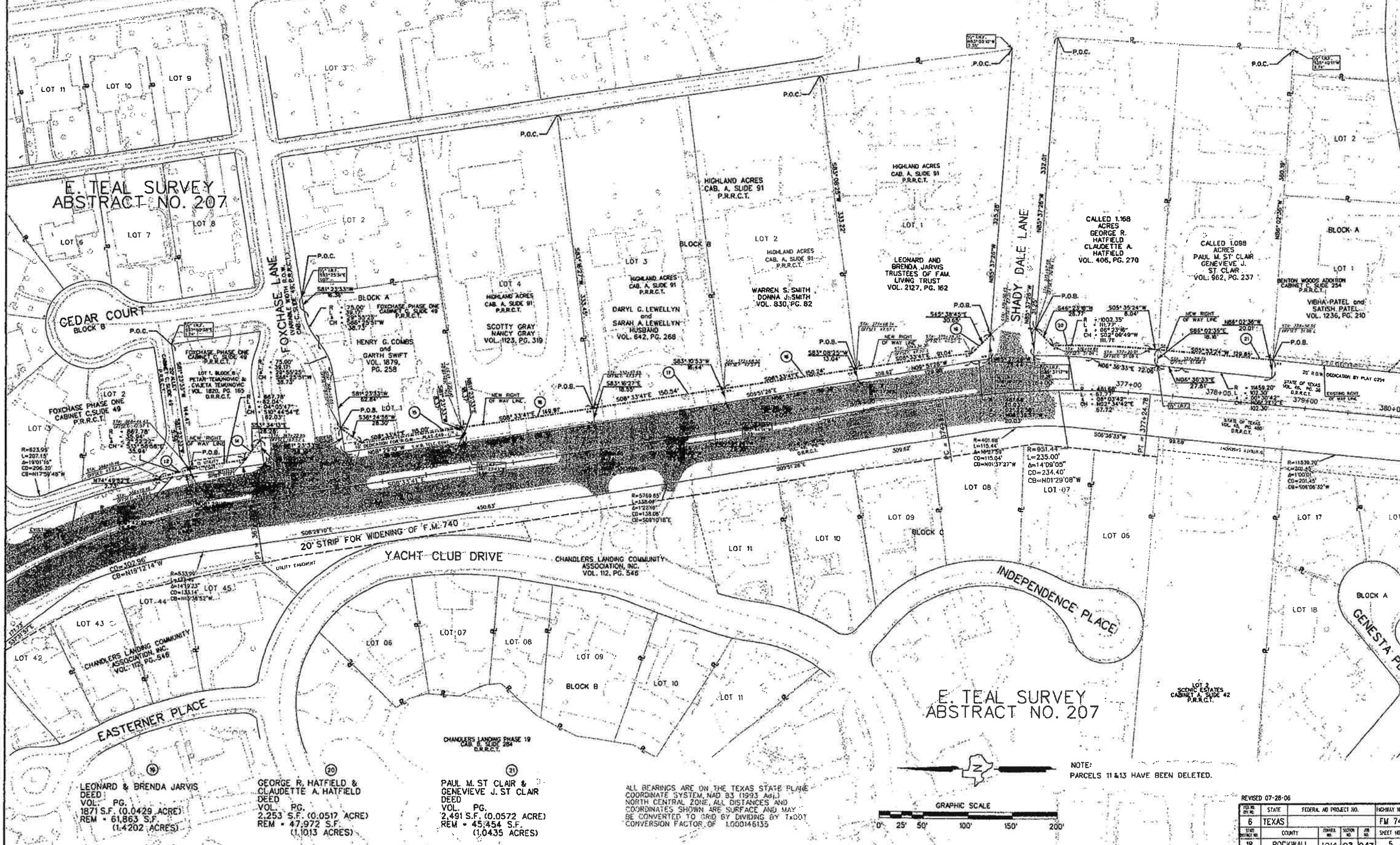
TEMUNOVIC PETAR & CVJETA
DEED
VOL. PG.
807 S.F. (0.0185 ACRE)
REM - 11,950 S.F.
(0.2743 ACRE)

HENRY G. COMBS & GARTH SWIFT
DEED
VOL. PG.
1318 S.F. (0.0302 ACRE)
REM - 24,376 S.F.
(0.5596 ACRE)

SCOTTY GRAY AND NANCY GRAY
DEED
VOL. PG.
2762 S.F. (0.0634 ACRE)
REM - 51,935 S.F.
(1.1923 ACRES)

DARYL G. LEWELLYN &
SARAH A. LEWELLYN
DEED
VOL. PG.
2,678 S.F. (0.0615 ACRE)
REM - 50,240 S.F.
(1.1533 ACRES)

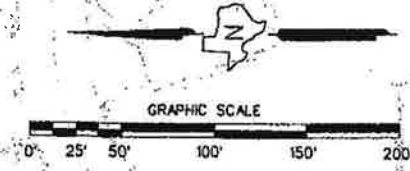
LEONARD & BRENDA JARVIS
DEED
VOL. PG.
2,213 S.F. (0.0508 ACRE)
REM - 50,208 S.F.
(1.1526 ACRES)



E. TEAL SURVEY
ABSTRACT NO. 207

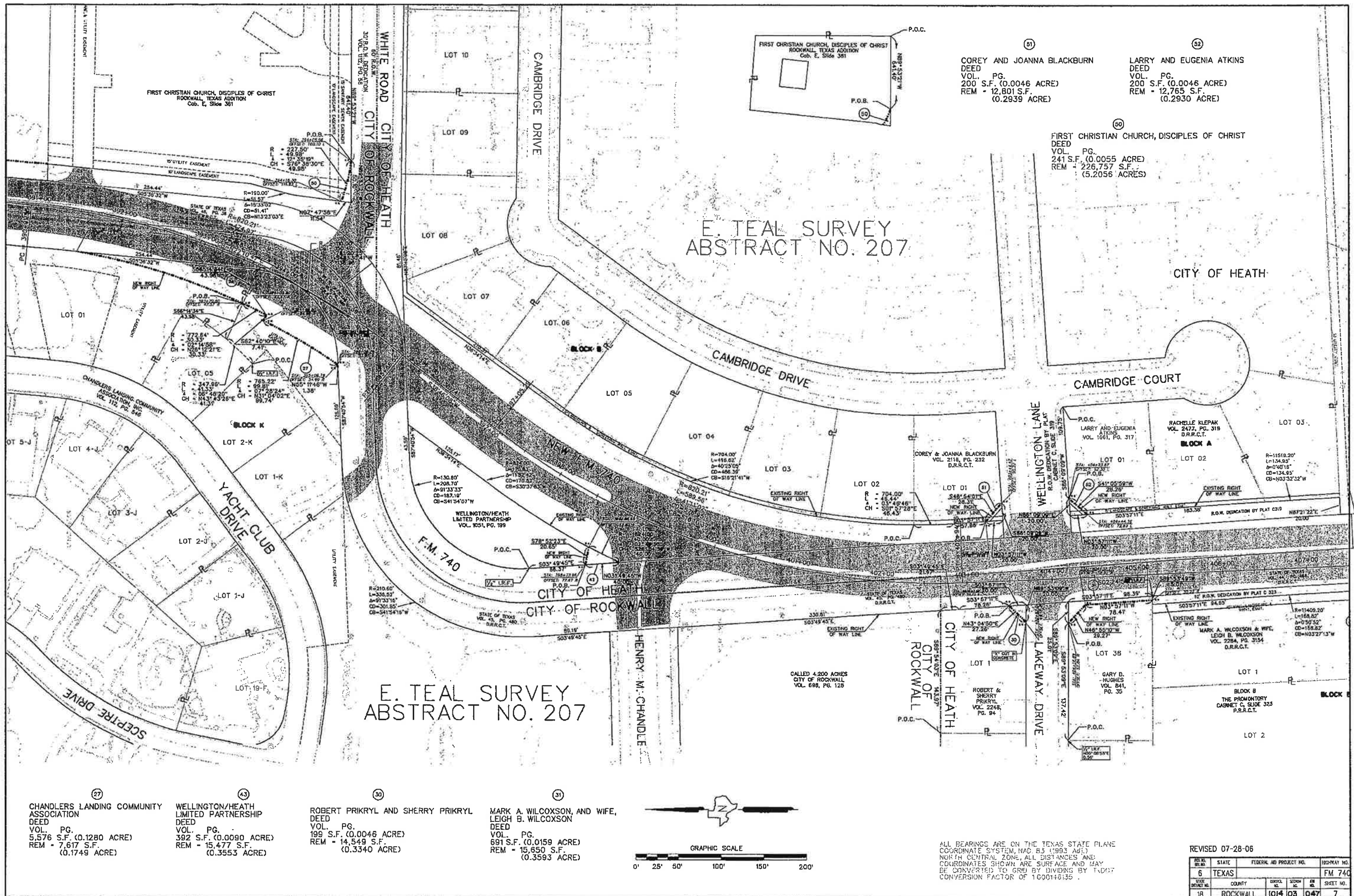
E. TEAL SURVEY
ABSTRACT NO. 207

ALL BEARINGS ARE ON THE TEXAS STATE PLANE
COORDINATE SYSTEM, NAD 83 (1993 ADJ.)
NORTH CENTRAL ZONE. ALL DISTANCES AND
COORDINATES SHOWN ARE SURFACE AND MAY
BE CONVERTED TO GRID BY DIVIDING BY TxDOT
CONVERSION FACTOR OF 1.000146135



NOTE:
PARCELS 11 & 13 HAVE BEEN DELETED.

FILE NO.	STATE	FEDERAL AID PROJECT NO.	HIGHWAY NO.
6	TEXAS		FM 740
STREET NO.	COUNTY	CHANGEL NO.	SECTION NO.
18	ROCKWALL	1014	03 047
			SHEET NO.
			5



E. TEAL SURVEY
ABSTRACT NO. 207

E. TEAL SURVEY
ABSTRACT NO. 207

51
COREY AND JOANNA BLACKBURN
DEED
VOL. PG.
200 S.F. (0.0046 ACRE)
REM - 12,801 S.F.
(0.2939 ACRE)

52
LARRY AND EUGENIA ATKINS
DEED
VOL. PG.
200 S.F. (0.0046 ACRE)
REM - 12,765 S.F.
(0.2930 ACRE)

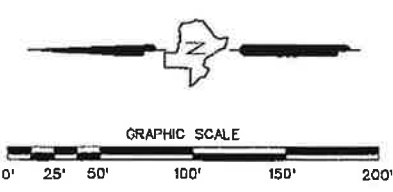
50
FIRST CHRISTIAN CHURCH, DISCIPLES OF CHRIST
DEED
VOL. PG.
241 S.F. (0.0055 ACRE)
REM - 226,757 S.F.
(5.2056 ACRES)

27
CHANDLERS LANDING COMMUNITY
ASSOCIATION
DEED
VOL. PG.
5,576 S.F. (0.1280 ACRE)
REM - 7,617 S.F.
(0.1749 ACRE)

43
WELLINGTON/HEATH
LIMITED PARTNERSHIP
DEED
VOL. PG.
392 S.F. (0.0090 ACRE)
REM - 15,477 S.F.
(0.3553 ACRE)

30
ROBERT PRIKRYL AND SHERRY PRIKRYL
DEED
VOL. PG.
199 S.F. (0.0046 ACRE)
REM - 14,549 S.F.
(0.3340 ACRE)

31
MARK A. WILCOXSON, AND WIFE,
LEIGH B. WILCOXSON
DEED
VOL. PG.
691 S.F. (0.0159 ACRE)
REM - 15,650 S.F.
(0.3593 ACRE)



ALL BEARINGS ARE ON THE TEXAS STATE PLANE
COORDINATE SYSTEM, NAD 83 (1993 ADJ.)
NORTH CENTRAL ZONE, ALL DISTANCES AND
COORDINATES SHOWN ARE SURFACE AND MAY
BE CONVERTED TO GRID BY DIVIDING BY TMD07
CONVERSION FACTOR OF 1.000146135.

REVISED 07-28-06

STATE	FEDERAL AID PROJECT NO.	HSWAY NO.
6 TEXAS		FM 740
COUNTY	DISTRICT	SHEET NO.
18 ROCKWALL	1014 03	047 7

E. TEAL SURVEY
ABSTRACT NO. 207

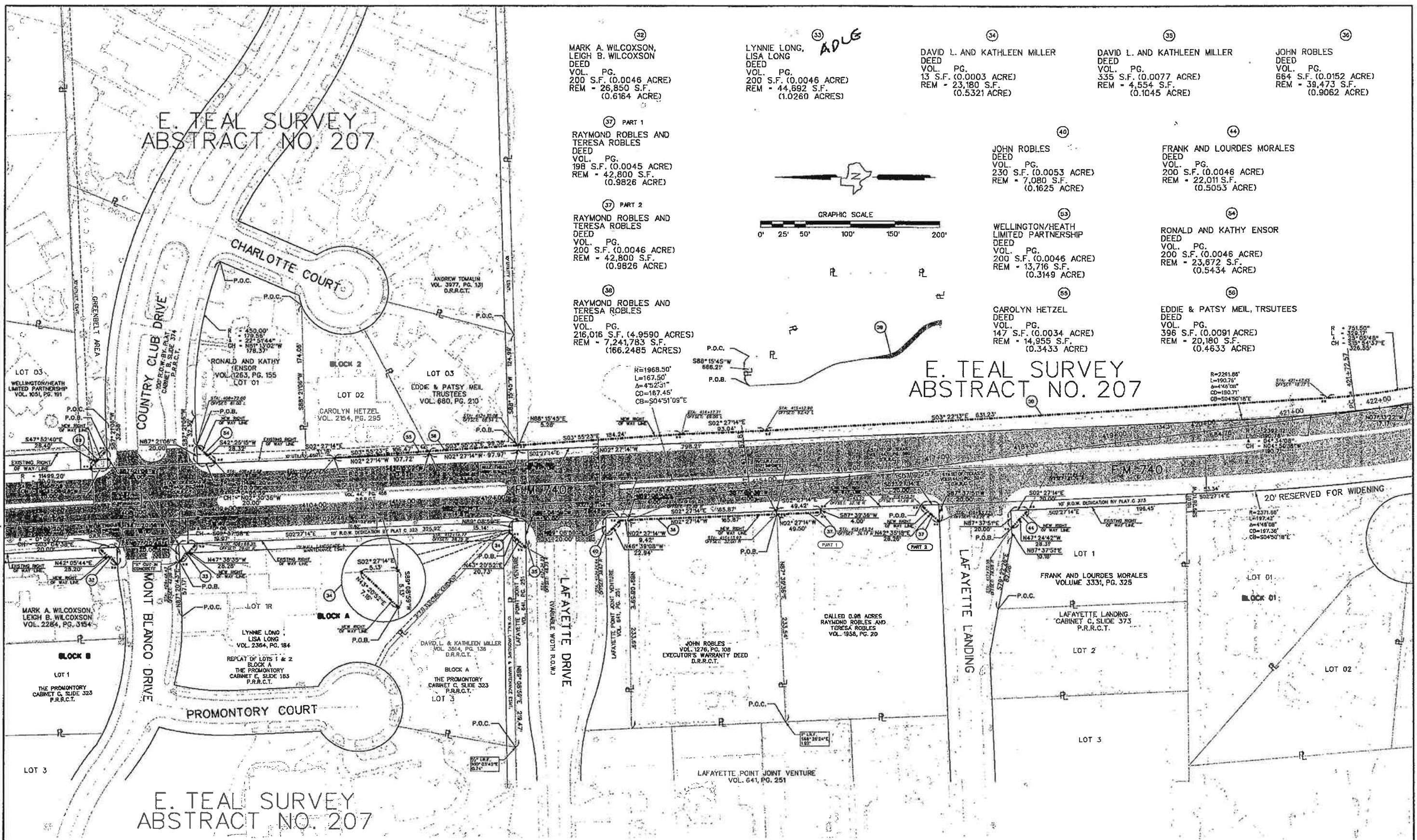
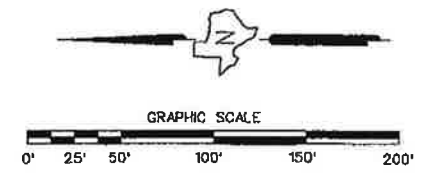
E. TEAL SURVEY
ABSTRACT NO. 207

- 32 MARK A. WILCOXSON,
LEIGH B. WILCOXSON
DEED
VOL. PG.
200 S.F. (0.0046 ACRE)
REM - 26,850 S.F.
(0.6164 ACRE)
- 33 LYNNE LONG,
LISA LONG
DEED
VOL. PG.
200 S.F. (0.0046 ACRE)
REM - 44,692 S.F.
(1.0260 ACRES)
- 34 DAVID L. AND KATHLEEN MILLER
DEED
VOL. PG.
13 S.F. (0.0003 ACRE)
REM - 23,180 S.F.
(0.5321 ACRE)
- 35 DAVID L. AND KATHLEEN MILLER
DEED
VOL. PG.
335 S.F. (0.0077 ACRE)
REM - 4,554 S.F.
(0.1045 ACRE)
- 36 JOHN ROBLES
DEED
VOL. PG.
664 S.F. (0.0152 ACRE)
REM - 39,473 S.F.
(0.9062 ACRE)

- 37 PART 1
RAYMOND ROBLES AND
TERESA ROBLES
DEED
VOL. PG.
198 S.F. (0.0045 ACRE)
REM - 42,800 S.F.
(0.9826 ACRE)
- 37 PART 2
RAYMOND ROBLES AND
TERESA ROBLES
DEED
VOL. PG.
200 S.F. (0.0046 ACRE)
REM - 42,800 S.F.
(0.9826 ACRE)
- 40 JOHN ROBLES
DEED
VOL. PG.
230 S.F. (0.0053 ACRE)
REM - 7,080 S.F.
(0.1625 ACRE)
- 44 FRANK AND LOURDES MORALES
DEED
VOL. PG.
200 S.F. (0.0046 ACRE)
REM - 22,011 S.F.
(0.5053 ACRE)

- 38 RAYMOND ROBLES AND
TERESA ROBLES
DEED
VOL. PG.
216,016 S.F. (4.9590 ACRES)
REM - 7,241,783 S.F.
(166,2485 ACRES)
- 53 WELLINGTON/HEATH
LIMITED PARTNERSHIP
DEED
VOL. PG.
200 S.F. (0.0046 ACRE)
REM - 13,716 S.F.
(0.3149 ACRE)
- 54 RONALD AND KATHY ENSOR
DEED
VOL. PG.
200 S.F. (0.0046 ACRE)
REM - 23,672 S.F.
(0.5434 ACRE)

- 55 CAROLYN HETZEL
DEED
VOL. PG.
147 S.F. (0.0034 ACRE)
REM - 14,955 S.F.
(0.3433 ACRE)
- 56 EDDIE & PATSY MEIL, TRSUTEES
DEED
VOL. PG.
396 S.F. (0.0091 ACRE)
REM - 20,180 S.F.
(0.4633 ACRE)



ALL BEARINGS ARE ON THE TEXAS STATE PLANE
COORDINATE SYSTEM, NAD 83 (1993 ADJ.)
NORTH CENTRAL ZONE. ALL DISTANCES AND
COORDINATES SHOWN ARE SURFACE AND MAY
BE CONVERTED TO GRID BY DIVIDING BY TxDOT
CONVERSION FACTOR OF 1.000146135.

REVISED 07-28-06

FILE NO.	STATE	FEDERAL NO PROJECT NO.	HIGHWAY NO.
6	TEXAS		FM 740
SHEET NO.	COUNTY	SECTION	SHEET NO.
18	ROCKWALL	104 03	047 8

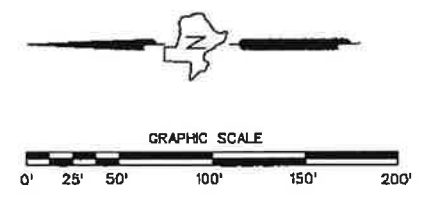
R01R-02-061

(45) JOHN L. JONES, TRUSTEE
 DEED
 VOL. PG.
 200 S.F. (0.0046 ACRE)
 REM -

(46) JOHN L. JONES, TRUSTEE
 DEED
 VOL. PG.
 200 S.F. (0.0046 ACRE)
 REM -

(47) JOHN L. JONES, TRUSTEE
 DEED
 VOL. PG.
 201 S.F. (0.0046 ACRE)
 REM -

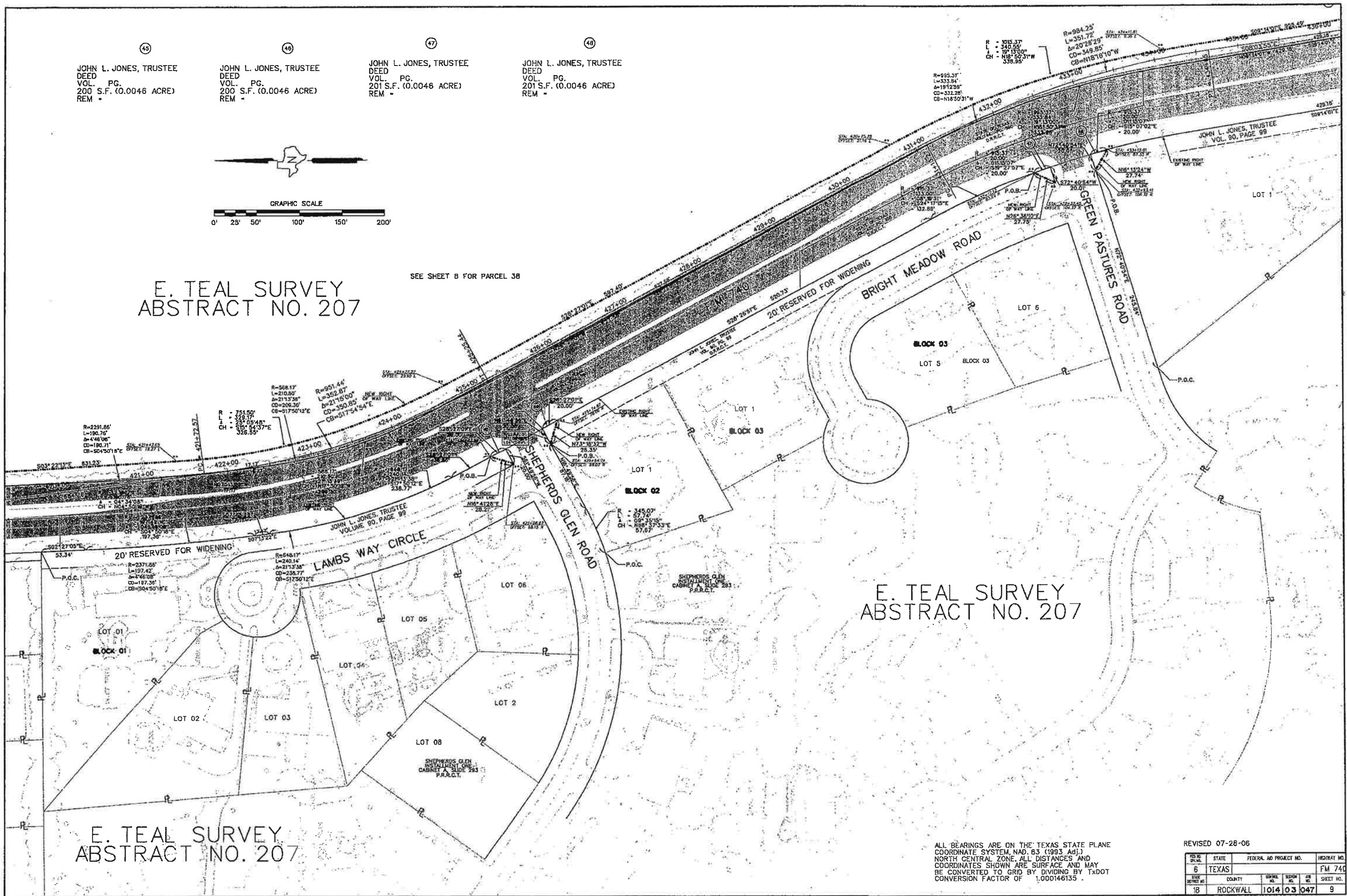
(48) JOHN L. JONES, TRUSTEE
 DEED
 VOL. PG.
 201 S.F. (0.0046 ACRE)
 REM -



E. TEAL SURVEY
ABSTRACT NO. 207

SEE SHEET B FOR PARCEL 38

E. TEAL SURVEY
ABSTRACT NO. 207



E. TEAL SURVEY
ABSTRACT NO. 207

ALL BEARINGS ARE ON THE TEXAS STATE PLANE
 COORDINATE SYSTEM, NAD 83 (1993 Adj.)
 NORTH CENTRAL ZONE. ALL DISTANCES AND
 COORDINATES SHOWN ARE SURFACE AND MAY
 BE CONVERTED TO GRID BY DIVIDING BY TXDOT
 CONVERSION FACTOR OF 1.000146135.

REVISED 07-28-06

STATE	FEDERAL AID PROJECT NO.	HIGHWAY NO.
6 TEXAS		FM 740
COUNTY	SHEET NO.	SHEET NO.
18 ROCKWALL	1014 03 047	9

8018-02-051

E. TEAL SURVEY
ABSTRACT NO. 207

CALLED 171.275 ACRES
BC GOLF GP, LLC
VOL. 1706, PG. 274

SEE SHEET 8 FOR PARCEL 38

47
JOHN L. JONES, TRUSTEE
DEED
VOL. PG.
201 S.F. (0.0046 ACRE)
REM -

48
JOHN L. JONES, TRUSTEE
DEED
VOL. PG.
201 S.F. (0.0046 ACRE)
REM -

F.M. 740

STATE OF TEXAS
VOL. 90, PG. 205
D.R.R.C.T.

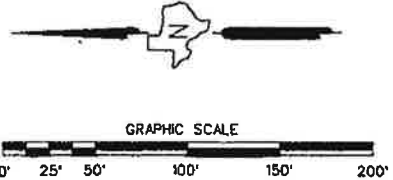
20' RESERVED FOR FUTURE R.O.W.

JOHN L. JONES, TRUSTEE
VOL. 90, PG. 99

BRIGHT MEADOW
ROAD

GREEN PASTURES

E. TEAL SURVEY
ABSTRACT NO. 207



ALL BEARINGS ARE ON THE TEXAS STATE PLANE
COORDINATE SYSTEM, NAD 83 (1993 ADJ.)
NORTH CENTRAL ZONE, ALL DISTANCES AND
COORDINATES SHOWN ARE SURFACE AND MAY
BE CONVERTED TO GRID BY DIVIDING BY TxDOT
CONVERSION FACTOR OF 1.000146135

REVISED 07-28-06

TITLE NO.	STATE	FEDERAL AID PROJECT NO.	HIGHWAY NO.
6	TEXAS		FM 740
DISTRICT NO.	COUNTY	CORREL. NO.	SHEET NO.
18	ROCKWALL	1014 03 047	10

E. TEAL SURVEY
ABSTRACT NO. 207

CALLLED 171.275 ACRES
BC GOLF GP, LLC
VOL. 1706, PG. 274

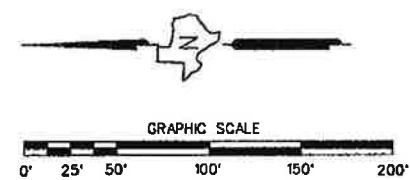
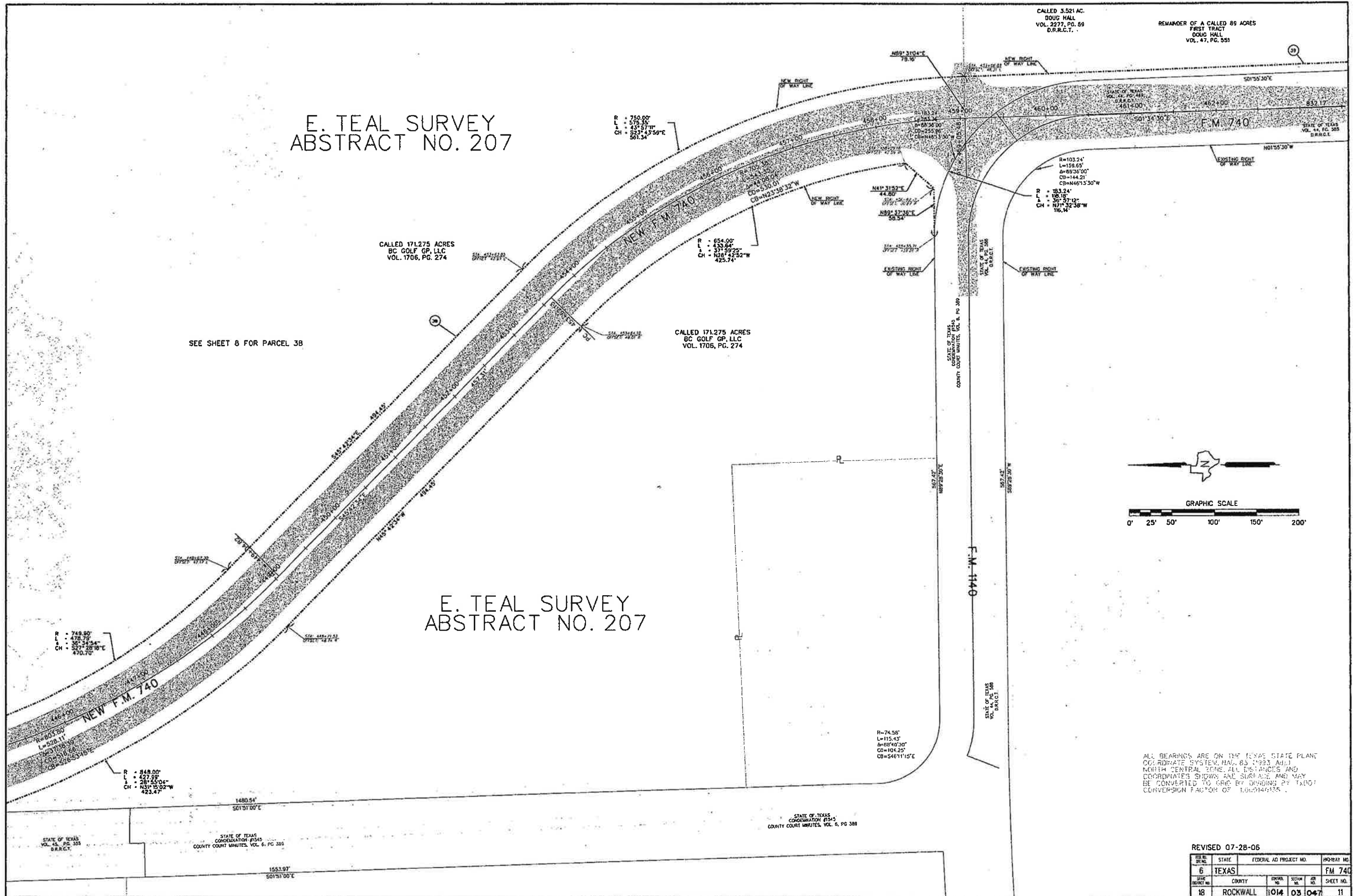
CALLLED 171.275 ACRES
BC GOLF GP, LLC
VOL. 1706, PG. 274

E. TEAL SURVEY
ABSTRACT NO. 207

SEE SHEET 8 FOR PARCEL 38

CALLLED 3.521 AC.
DOUG HALL
VOL. 2277, PG. 89
D.R.R.C.T.

REMAINDER OF A CALLED 89 ACRES
FIRST TRACT
DOUG HALL
VOL. 47, PG. 551

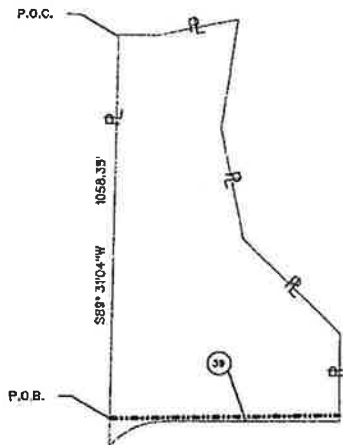


ALL BEARINGS ARE ON THE TEXAS STATE PLANT
COORDINATE SYSTEM, NAD 83 (1983 ADJ.)
NORTH CENTRAL ZONE. ALL DISTANCES AND
COORDINATES SHOWN ARE SURFACE AND MAY
BE CONVERTED TO GROUND BY DIVIDING BY
CONVERSION FACTOR OF 1.000146135.

REVISED 07-28-06

FILE NO.	STATE	FEDERAL AID PROJECT NO.	PROJECT NO.
6	TEXAS		FM 740
SHEET NO.	COUNTY	SECTION	RANGE
18	ROCKWALL	1014 03	047 11

8018-02-061



SEE SHEET 8 FOR PARCEL 38

E. TEAL SURVEY ABSTRACT NO. 207

DOUG HALL
DEED
VOL. PG.
9,251 S.F. (0.2124 ACRE)
REM - 3.3086 AC.

CALLED 3.521 ACRES
DOUG HALL
VOL. 2277, PG. 59

WILLOW SPRINGS NO. 1
C&G, D, SLIDE 84
P.R.R.C.T.

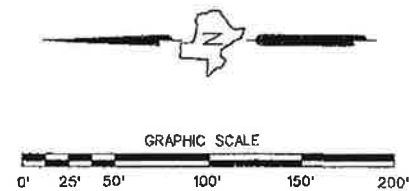
END PROJECT
RIGHT OF WAY CS: 1014-03-047
ACCOUNT NUMBER: 8018-02-051
STA. 465+87.83

E. TEAL SURVEY ABSTRACT NO. 207

STATE OF TEXAS
COMMISSIONERS OF
COUNTY COURT, JUDICIAL DISTRICT NO. 10, P. 30

R = 183.20'
L = 64.84'
Δ = 51° 28' 35"
CH = N27° 30' 10" W
155.16'

R = 103.24'
L = 158.65'
Δ = 84° 35' 00"
CD = 144.21'
CB = N45° 13' 30" W



NOTE: PARCEL 49 DOES NOT EXIST

ALL BEARINGS ARE ON THE TEXAS STATE PLANE
COORDINATE SYSTEM, NAD 83 (1983 ADJ.)
NORTH CENTRAL ZONE. ALL DISTANCES AND
COORDINATES SHOWN ARE SURFACE AND MAY
BE CONVERTED TO GRID BY DIVIDING BY 1.0001
CONVERSION FACTOR OF 1.000146134

REVISED 07-28-06

STATE	FEDERAL AID PROJECT NO.	HIGHWAY NO.
6 TEXAS		FM 740
COUNTY	SECTION	SHEET NO.
18 ROCKWALL	1014 03 047	12

8018-02-051