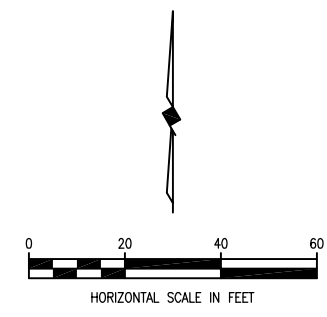
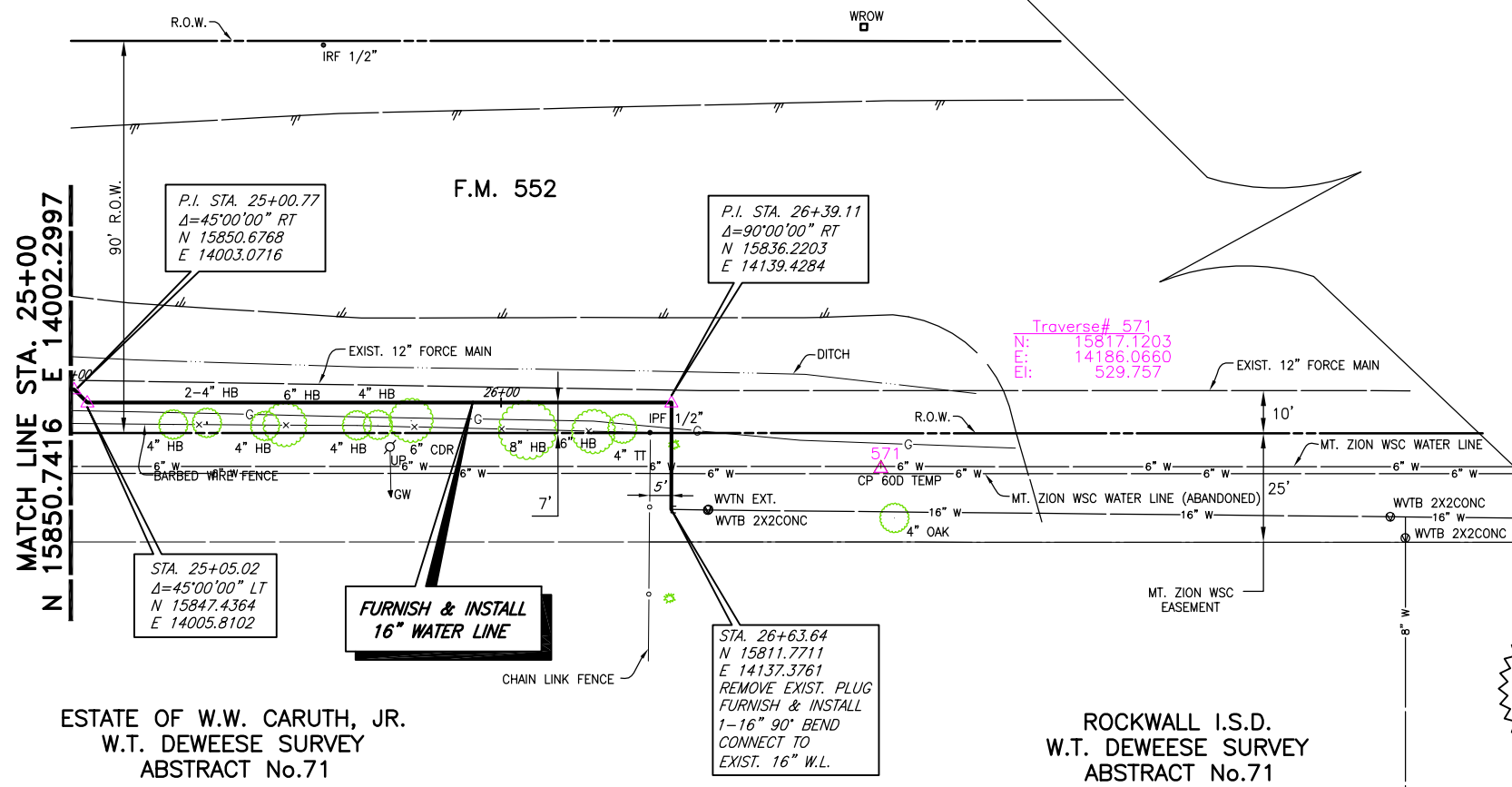
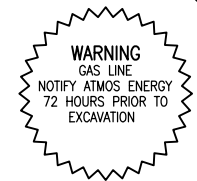


REVISION: 8/22/07 - GCEKU  
 PLOT SCALE: 1:40  
 PLOT STYLE: 11x17.ctb  
 PLOTTED BY: GCEKU ON 8/22/2007



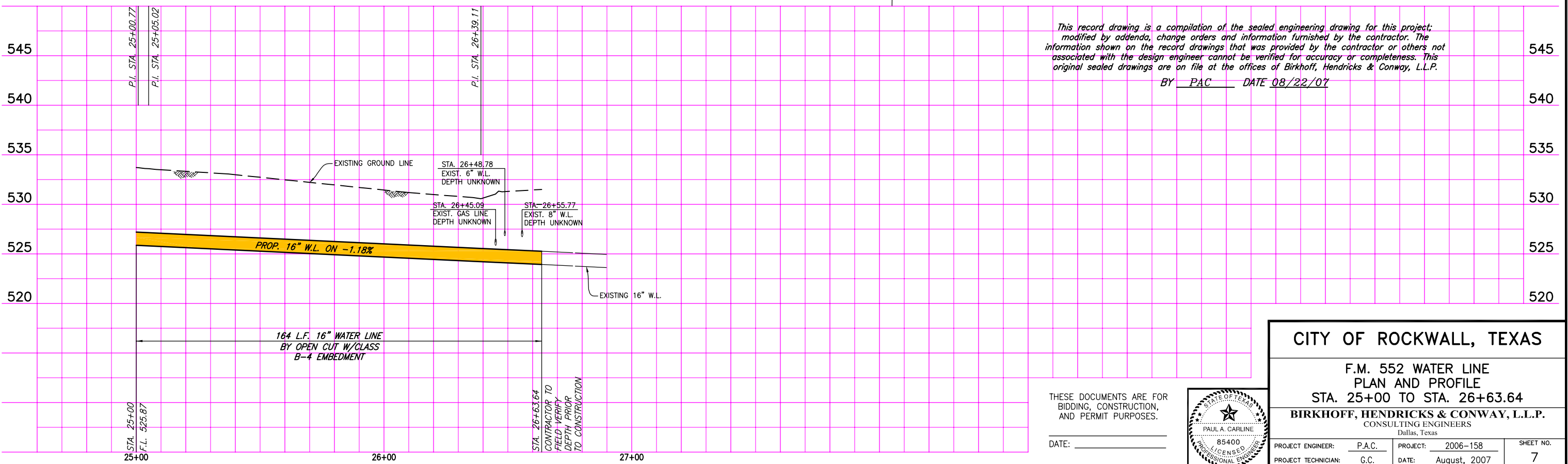
ESTATE OF W.W. CARUTH, JR.  
 W.T. DEWEESE SURVEY  
 ABSTRACT No.71

ROCKWALL I.S.D.  
 W.T. DEWEESE SURVEY  
 ABSTRACT No.71



These plans and related specifications were prepared for construction of this specific project only. Reuse of these documents is not permitted without written authorization of Birkhoff, Hendricks, & Conway, L.L.P.

This record drawing is a compilation of the sealed engineering drawing for this project; modified by addenda, change orders and information furnished by the contractor. The information shown on the record drawings that was provided by the contractor or others not associated with the design engineer cannot be verified for accuracy or completeness. This original sealed drawings are on file at the offices of Birkhoff, Hendricks & Conway, L.L.P.  
 BY PAC DATE 08/22/07



**CITY OF ROCKWALL, TEXAS**

F.M. 552 WATER LINE  
 PLAN AND PROFILE  
 STA. 25+00 TO STA. 26+63.64

**BIRKHOFF, HENDRICKS & CONWAY, L.L.P.**  
 CONSULTING ENGINEERS  
 Dallas, Texas

PROJECT ENGINEER: P.A.C. PROJECT: 2006-158 SHEET NO. 7  
 PROJECT TECHNICIAN: G.C. DATE: August, 2007

THESE DOCUMENTS ARE FOR BIDDING, CONSTRUCTION, AND PERMIT PURPOSES.  
 DATE: \_\_\_\_\_

