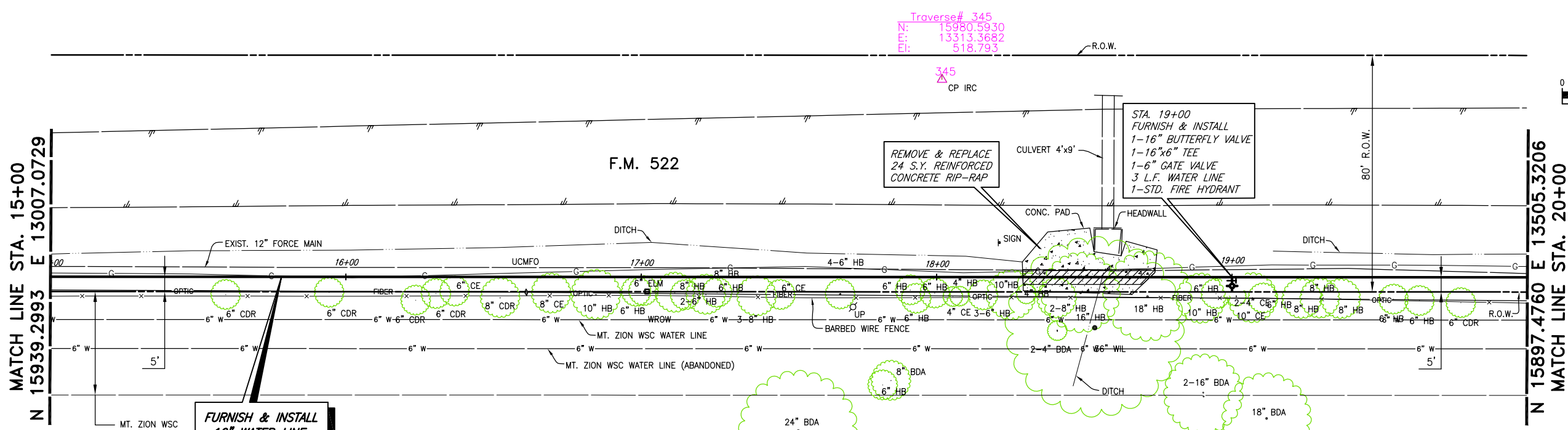
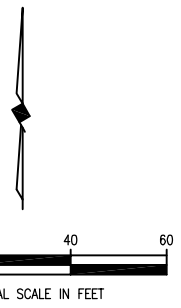


REVISION: 8/22/07 - GCEKU
 PLOT SCALE: 1:40
 PLOT STYLE: 11x17.ctb
 PLOTTED BY: GCEKU ON 8/22/2007
 H:\Projects\Rockwall\2006158\Sheets\2006158-05.dwg



**FURNISH & INSTALL
16\"/>**

WARNING
 GAS LINE
 NOTIFY ATMOS ENERGY
 72 HOURS PRIOR TO
 EXCAVATION

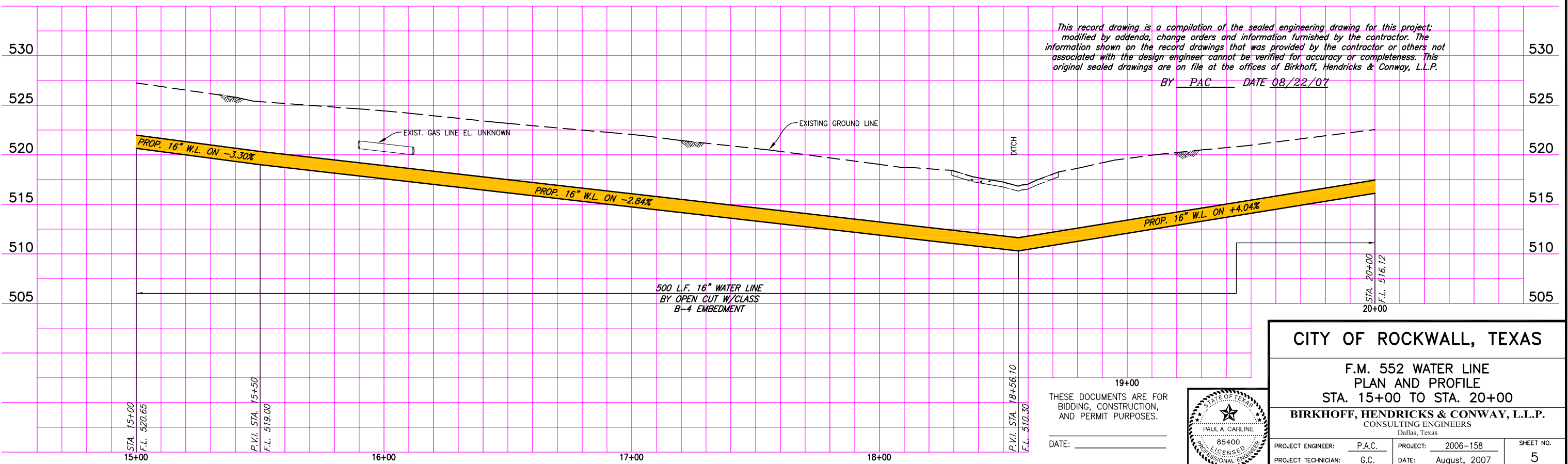
1-800-DIG-TESS
 CALL US
 BEFORE YOU DIG

WARNING
 S.W. BELL BURIED
 TELEPHONE CABLE
 CALL ENTERPRISE 9800
 72 HOURS PRIOR TO
 EXCAVATION

ESTATE OF W.W. CARUTH, JR.
 W.T. DEWEESE SURVEY
 ABSTRACT No.71

These plans and related specifications were prepared for construction of this specific project only. Reuse of these documents is not permitted without written authorization of Birkhoff, Hendricks, & Conway, L.L.P.

This record drawing is a compilation of the sealed engineering drawing for this project; modified by addenda, change orders and information furnished by the contractor. The information shown on the record drawings that was provided by the contractor or others not associated with the design engineer cannot be verified for accuracy or completeness. This original sealed drawings are on file at the offices of Birkhoff, Hendricks & Conway, L.L.P.
 BY PAC DATE 08/22/07

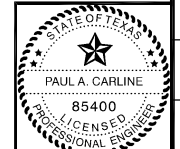


CITY OF ROCKWALL, TEXAS

F.M. 552 WATER LINE
 PLAN AND PROFILE
 STA. 15+00 TO STA. 20+00

BIRKHOFF, HENDRICKS & CONWAY, L.L.P.
 CONSULTING ENGINEERS
 Dallas, Texas

PROJECT ENGINEER:	P.A.C.	PROJECT:	2006-158	SHEET NO.	5
PROJECT TECHNICIAN:	G.C.	DATE:	August, 2007		



THESE DOCUMENTS ARE FOR
 BIDDING, CONSTRUCTION,
 AND PERMIT PURPOSES.
 DATE: _____