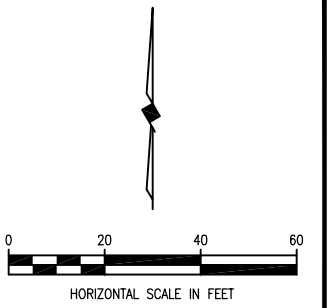
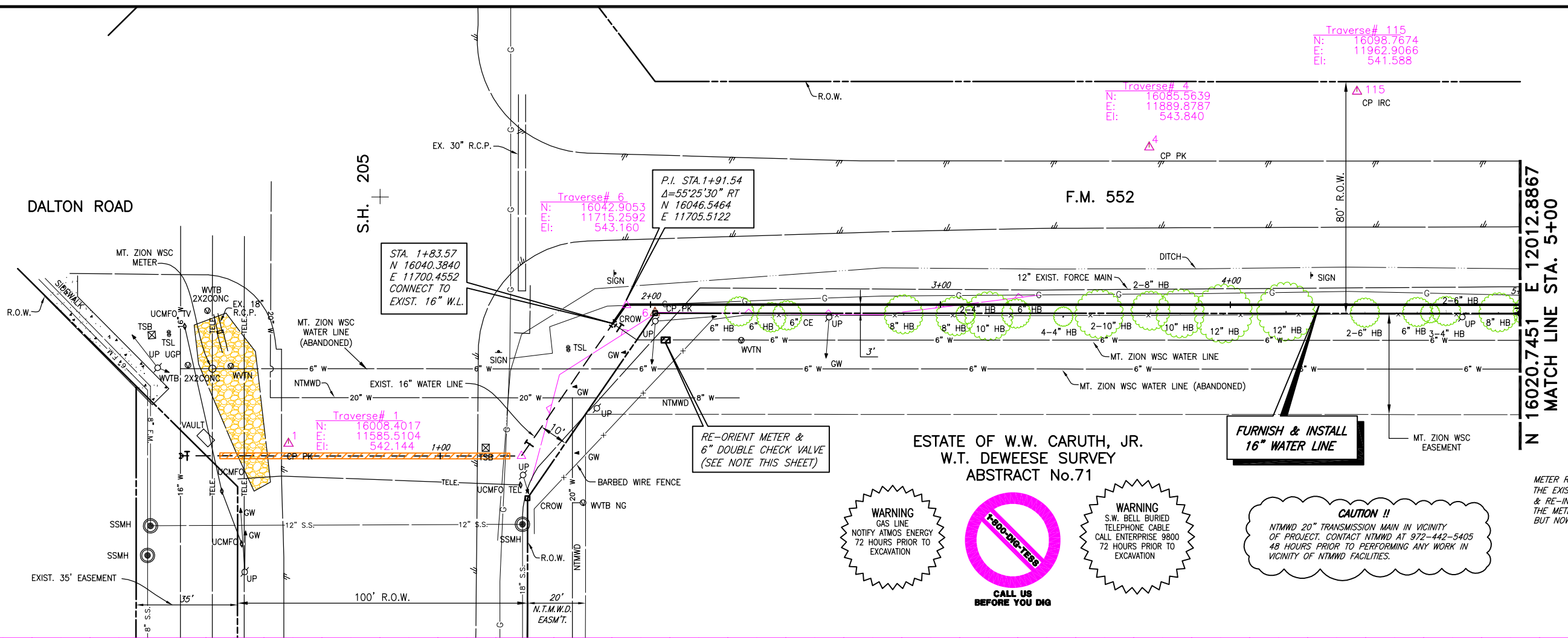


REVISD: 8/22/07 - GCEKU
 H:\Projects\Rockwall\2006158\Sheets\2006158-02Sec.ll.dwg
 PLOT SCALE: 1:40
 PLOT STYLE: 11x17.ctb
 PLOTTED BY: GCEKU ON 8/22/2007



WARNING
 GAS LINE
 NOTIFY ATMOS. ENERGY
 72 HOURS PRIOR TO
 EXCAVATION

CALL US BEFORE YOU DIG

WARNING
 S.W. BELL BURIED
 TELEPHONE CABLE
 CALL ENTERPRISE 9800
 72 HOURS PRIOR TO
 EXCAVATION

CAUTION !!
 NTMWD 20" TRANSMISSION MAIN IN VICINITY
 OF PROJECT. CONTACT NTMWD AT 972-442-5405
 48 HOURS PRIOR TO PERFORMING ANY WORK IN
 VICINITY OF NTMWD FACILITIES.

NOTE:
 METER RE-ORIENTATION SHALL INCLUDE REMOVING
 THE EXISTING 6" DOUBLE CHECK VALVE & METER
 & RE-INSTALLING (ROTATING 180°) THEM SO
 THE METER NO LONGER SUPPLIES ROCKWALL,
 BUT NOW SUPPLIES MT-ZION WSC.

These plans and related specifications
 were prepared for construction of this
 specific project only. Reuse of these
 documents is not permitted without
 written authorization of Birkhoff,
 Hendricks, & Conway, L.L.P.

