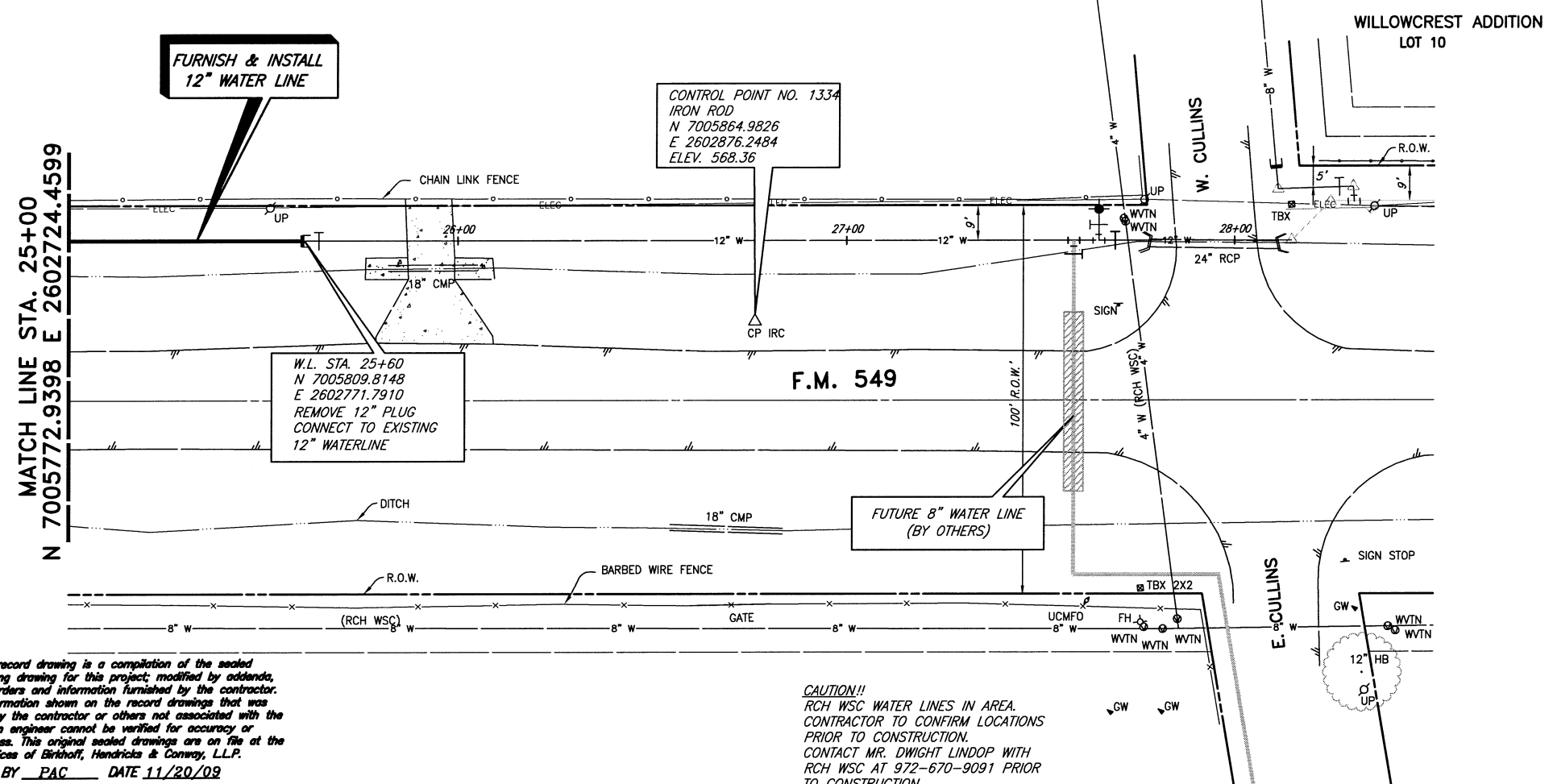
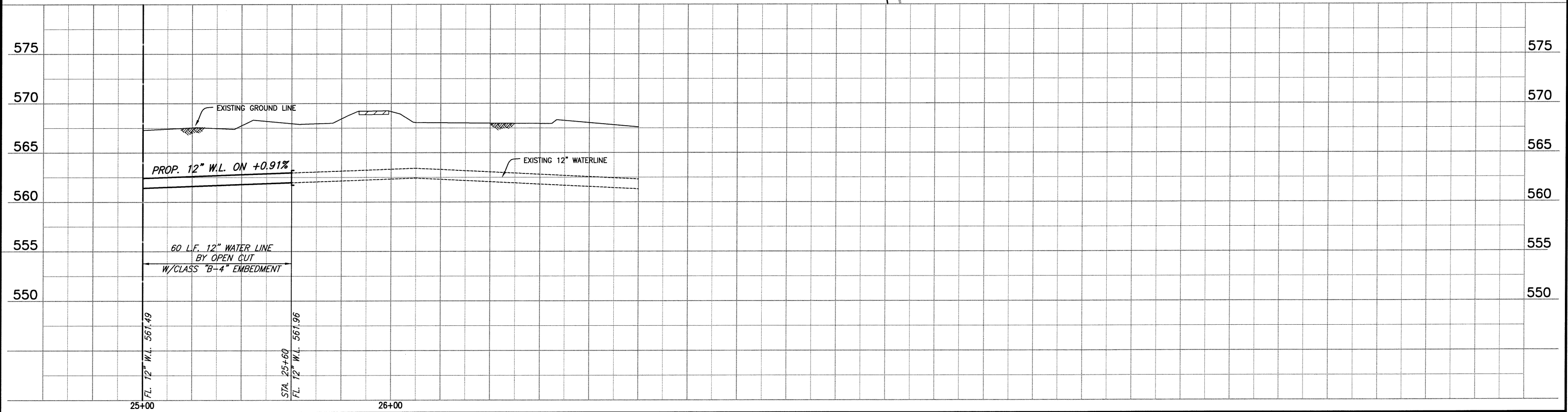
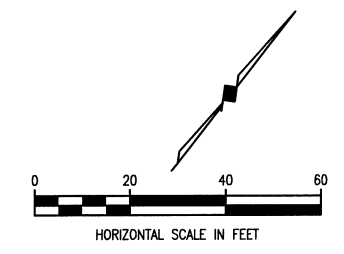


These plans and related specifications were prepared for construction of this specific project only. Reuse of these documents is not permitted without written authorization of Birkhoff, Hendricks, & Conway, L.L.P.



This record drawing is a compilation of the sealed engineering drawing for this project, modified by addenda, change orders and information furnished by the contractor. The information shown on the record drawings that was provided by the contractor or others not associated with the design engineer cannot be verified for accuracy or completeness. This original sealed drawings are on file at the offices of Birkhoff, Hendricks & Conway, L.L.P.
 BY PAC DATE 11/20/09

CAUTION!!
 RCH WSC WATER LINES IN AREA.
 CONTRACTOR TO CONFIRM LOCATIONS
 PRIOR TO CONSTRUCTION.
 CONTACT MR. DWIGHT LINDOP WITH
 RCH WSC AT 972-670-9091 PRIOR
 TO CONSTRUCTION.



BIRKHOFF, HENDRICKS & CONWAY, L.L.P.
 CONSULTING ENGINEERS
 7502 Greenville Ave., Suite 220
 Dallas, Texas
 (214) 361-7900



THESE DOCUMENTS ARE FOR
 BIDDING, CONSTRUCTION,
 AND PERMIT PURPOSES.
 DATE: 12/10/07

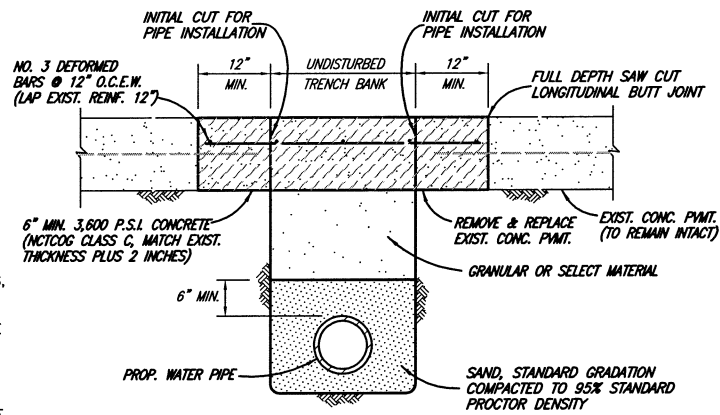
CITY OF ROCKWALL, TEXAS
 F.M. 549 WATER LINE
 12" WATER LINE (LINE E)
 PLAN-PROFILE
 STA. 25+00 TO STA. 25+60

BHC
 PROJECT NO.
 2006-150
 December, 2007

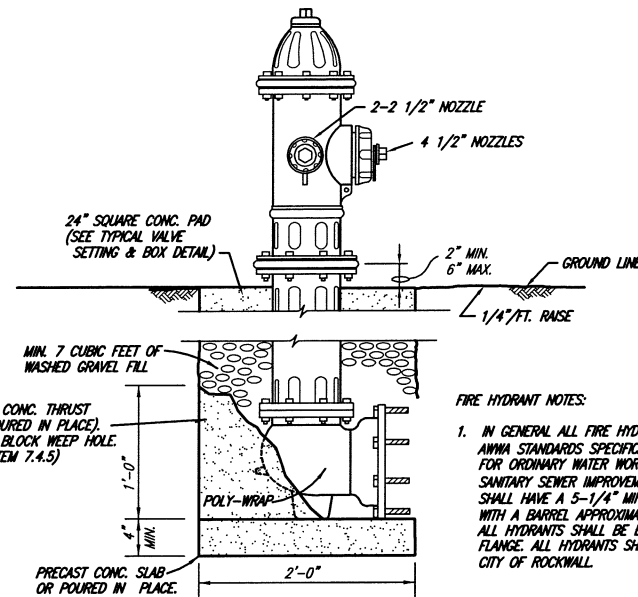
SHEET NO.
6

WATER LINE NOTES
(NOTES APPLY TO ALL SHEETS)

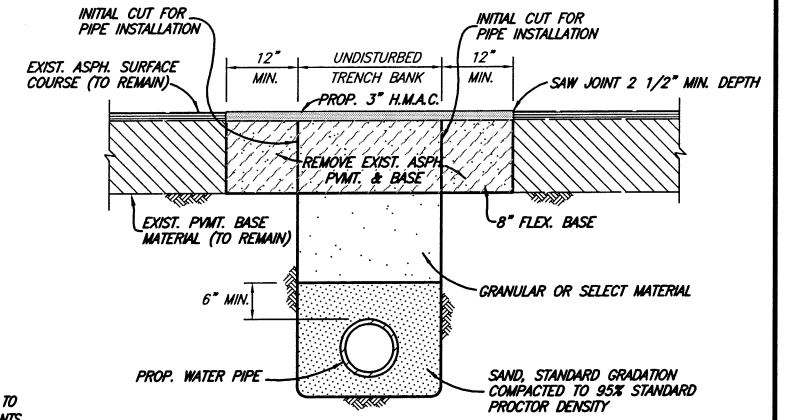
- 1) WATER LINES 6-INCHES TO 12-INCHES IN DIAMETER SHALL BE PVC AWMA C-900 DR-14, CLASS 200
- 2) WATER LINES 14-INCHES TO 24-INCHES IN DIAMETER SHALL BE PVC AWMA C-905 DR-18, CLASS 235
- 3) WATER LINES 36-INCHES IN DIAMETER SHALL BE PVC AWMA C-905 DR-25, CLASS 165
- 4) ALL WATER LINES HAVE A MINIMUM COVER OF 48-INCHES.
- 5) ALL TEES, BENDS, ELBOWS, PLUGS, AND OTHER FITTINGS SHALL BE RESTRAINED USING MEGA-LUGS OR APPROVED EQUAL. JOINT RESTRAINT SHALL BE SUCH TO RESTRAIN TEST PRESSURES.
- 6) EXISTING UTILITIES SHOWN ON THE PLANS HAVE BEEN LOCATED FROM REFERENCE INFORMATION PROVIDED BY UTILITY COMPANIES AND FIELD SURVEYS. THE UTILITIES SHOWN MAY NOT REPRESENT ALL UTILITIES PRESENT. THE ENGINEER AND CITY OF ROCKWALL DO NOT ACCEPT RESPONSIBILITY FOR THE UTILITY LOCATIONS SHOWN. THE CONTRACTOR SHALL VERIFY UTILITY LOCATIONS BOTH HORIZONTALLY AND VERTICALLY PRIOR TO CONSTRUCTION AND SHALL TAKE NECESSARY PRECAUTIONS TO PROTECT ALL UTILITIES ENCOUNTERED. THE CONTRACTOR SHALL PRESERVE AND PROTECT ALL EXISTING UTILITIES FROM DAMAGE AND SHALL REPAIR ANY UTILITIES DAMAGED BY THEIR OPERATIONS AT THEIR EXPENSE. CONTRACTOR SHALL NOTIFY ENGINEER OF ANY CONFLICTS WITH UTILITIES.
- 7) ALL WORK SHALL COMPLY WITH APPLICABLE CODES, REGULATIONS, AND STANDARDS IMPOSED BY UTILITY COMPANIES AND THE CITY OF ROCKWALL.
- 8) CONTRACTOR SHALL FURNISH AND INSTALL BLUE E.M.T. MARKER PADS AT ALL BENDS, VALVES, CHANGES IN HORIZONTAL ALIGNMENT, AND EVERY 250-FOOT ALONG THE LENGTH OF THE WATER LINE AS SHOWN IN THE CITY OF ROCKWALL STANDARD DETAILS. PAYMENT FOR FURNISHING AND INSTALLING THE E.M.T. MARKER PADS SHALL BE SUBSIDIARY TO WATER LINE INSTALLATION.
- 9) SEWER PRESSURE PIPE SHALL BE PVC, SDR 26 (160PSI PRESSURE RATING), ASTM D2241.
- 10) PAYMENT FOR DUCTILE IRON FITTINGS SHALL BE AT THE CONTRACT UNIT PRICE AS PROVIDED IN THE PROPOSAL AND BID SCHEDULE.
- 11) CONNECTIONS TO RCH WSC FACILITIES WILL BE PERMITTED WHEN APPROVED BY THE CITY OF ROCKWALL.
- 12) ALL VALVE STEM EXTENSIONS SHALL BE STAINLESS STEEL.



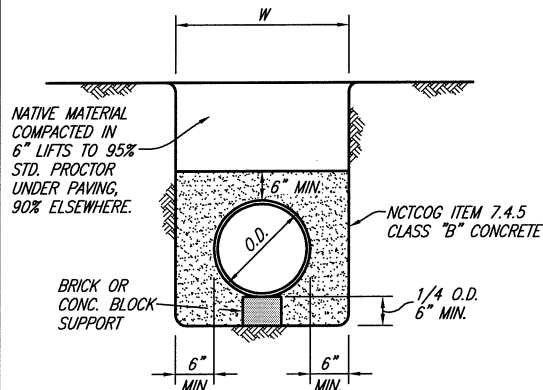
CONCRETE STREET OR DRIVEWAY REPAIR



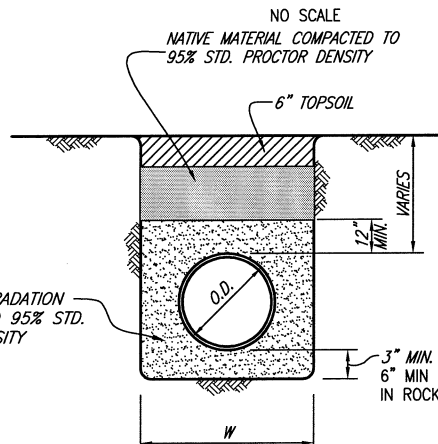
FIRE HYDRANT ASSEMBLY



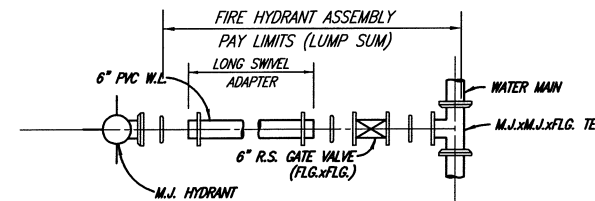
ASPHALT STREET OR DRIVEWAY REPAIR



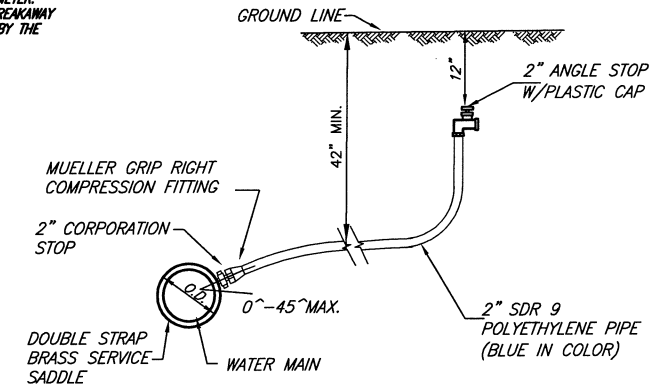
CLASS G EMBEDMENT
CONCRETE ENCASEMENT



CLASS B-4 EMBEDMENT

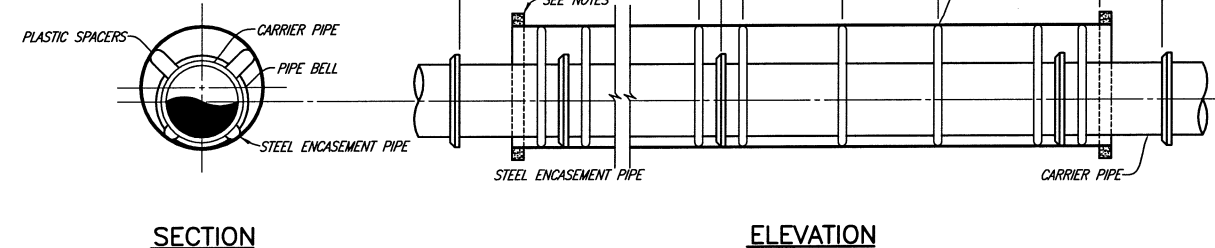


FIRE HYDRANT ASSEMBLY



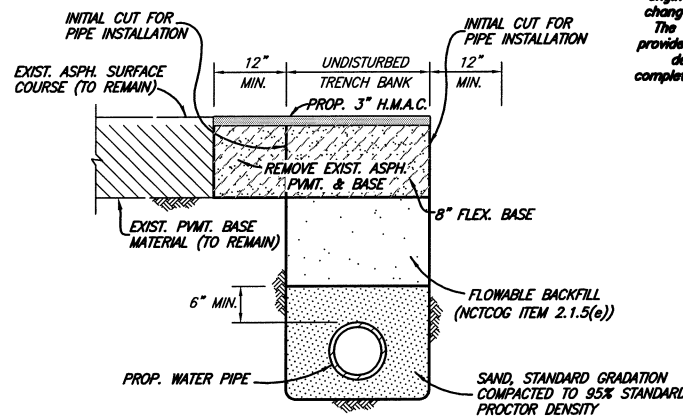
WATER SERVICE ASSEMBLY

- BORING NOTES:**
1. PREFABRICATED PLASTIC SPACERS MUST BE APPROVED BY THE OWNER.
 2. CONTRACTOR SHALL PROVIDE SUPPORT UNDER CARRIER PIPE TO HAVE MIN. 1" CLEARANCE BETWEEN PIPE BELL AND ENCASEMENT PIPE.
 3. ENDS OF ENCASEMENT PIPE SHALL BE PLUGGED WITH BRICK AND MORTAR FOR ROADWAY CROSSINGS. PLUGS SHALL BE CONSTRUCTED WITH A WEEP HOLE.

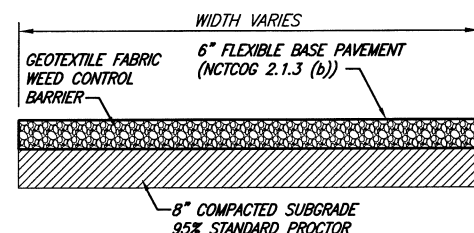


ENCASED ROAD OR RAILROAD BORE

USING PLASTIC SPACERS
NO SCALE

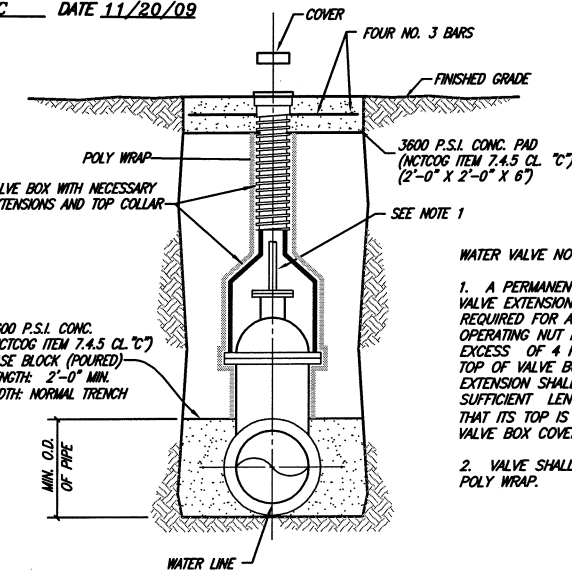


ASPHALT STREET OR DRIVEWAY REPAIR ALONG PAVEMENT EDGE



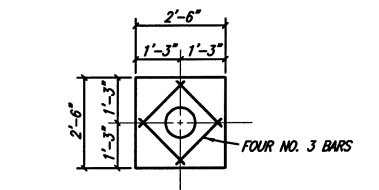
GRAVEL DRIVE REPAIR

This record drawing is a compilation of the sealed engineering drawing for this project, modified by addenda, change orders and information furnished by the contractor. The information shown on the record drawings that was provided by the contractor or others not associated with the design engineer cannot be verified for accuracy or completeness. This original sealed drawings are on file at the offices of Birkhoff, Hendricks & Conway, L.L.P.
BY PAC DATE 11/20/09



GATE VALVE SETTING & BOX

NO SCALE

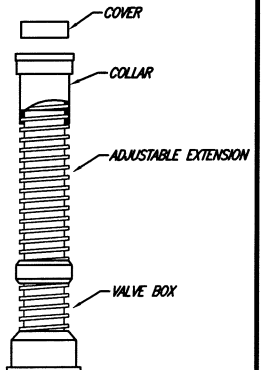


VALVE BOX PAD PLAN

NO SCALE

WATER VALVE NOTES:

1. A PERMANENTLY ATTACHED VALVE EXTENSION STEM SHALL BE REQUIRED FOR ANY VALVE WHOSE OPERATING NUT IS LOCATED IN EXCESS OF 4 FEET BELOW THE TOP OF VALVE BOX. THIS EXTENSION SHALL BE OF SUFFICIENT LENGTH TO INSURE THAT ITS TOP IS WITHIN 4" OF THE VALVE BOX COVER.
2. VALVE SHALL BE WRAPPED IN POLY WRAP.



VALVE BOX WITH EXTENSION

NO SCALE

BIRKHOFF, HENDRICKS & CONWAY, L.L.P.
CONSULTING ENGINEERS
7502 Greenville Ave., Suite 220
Dallas, Texas
(214) 361-7900



THESE DOCUMENTS ARE FOR BIDDING, CONSTRUCTION, AND PERMIT PURPOSES.
DATE: 12/10/07

CITY OF ROCKWALL, TEXAS
780 SERVICE AREA WATER LINE IMPROVEMENTS
NOTES AND DETAILS

BHC PROJECT NO. 2006-150
December, 2007

SHEET NO.

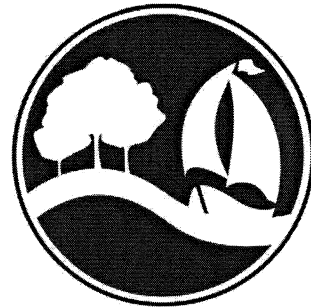
7

These plans and related specifications were prepared for construction of this specific project only. Reuse of these documents is not permitted without written authorization of Birkhoff, Hendricks, & Conway, L.L.P.

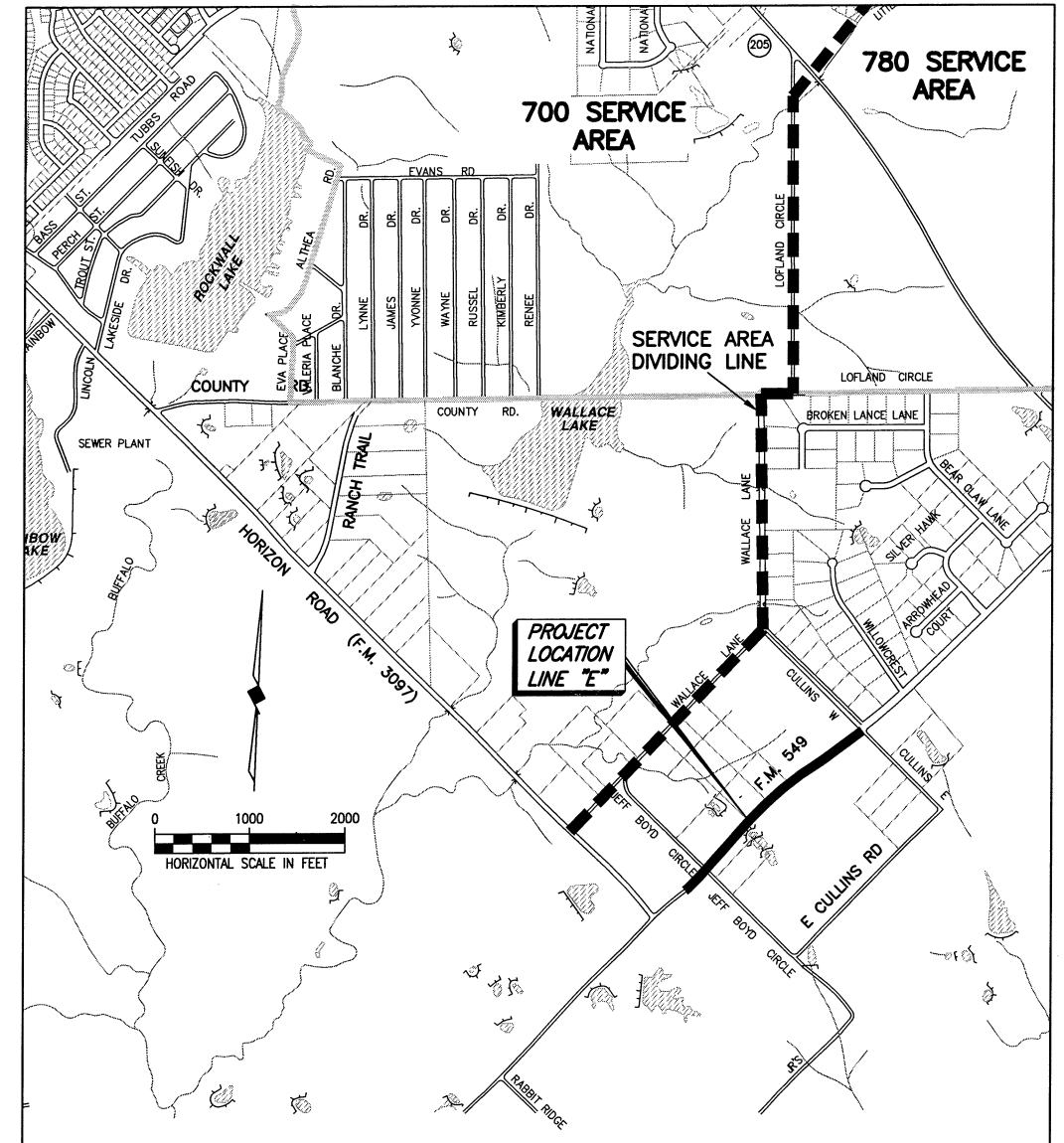
CITY OF ROCKWALL, TEXAS

CONSTRUCTION PLANS FOR:

780 SERVICE AREA F.M. 549 WATER LINE IMPROVEMENTS



BIRKHOFF, HENDRICKS & CONWAY, L.L.P.
CONSULTING ENGINEERS
Dallas, Texas



LOCATION MAP

COUNCIL MEMBERS

BILL CECIL, MAYOR
STEPHEN STRAUGHAN, MAYOR PRO-TEM
MATT SCOTT
DAVID SWEET
GLEN FERRIS
MARGO NIELSEN
CLIFFORD "CLIFF" SEVIER

CITY MANAGER

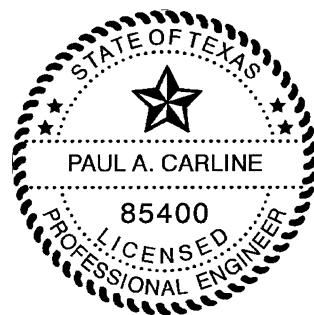
JULIE COUCH

ASSISTANT CITY MANAGER

RICK CROWLEY

CITY ENGINEER

CHUCK TODD, P.E.



THESE DOCUMENTS ARE FOR
BIDDING, CONSTRUCTION,
AND RECORD PURPOSES.

DATE: 12/10/07

DECEMBER, 2007

SHEET NO.

—
1-6
7

SHEET DESCRIPTION

COVER SHEET AND LOCATION MAP
LINE A PLAN- PROFILE STA. 0+00 TO STA. 37+74.11
NOTES & DETAILS

This record drawing is a compilation of the sealed engineering drawing for this project; modified by addenda, change orders and information furnished by the contractor. The information shown on the record drawings that was provided by the contractor or others not associated with the design engineer cannot be verified for accuracy or completeness. This original sealed drawing is on file at the offices of Birkhoff, Hendricks & Conway, L.L.P.
BY PAC DATE 11/20/09