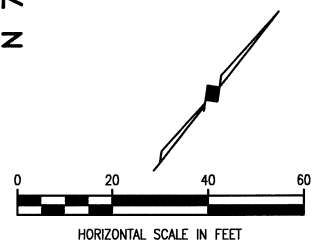
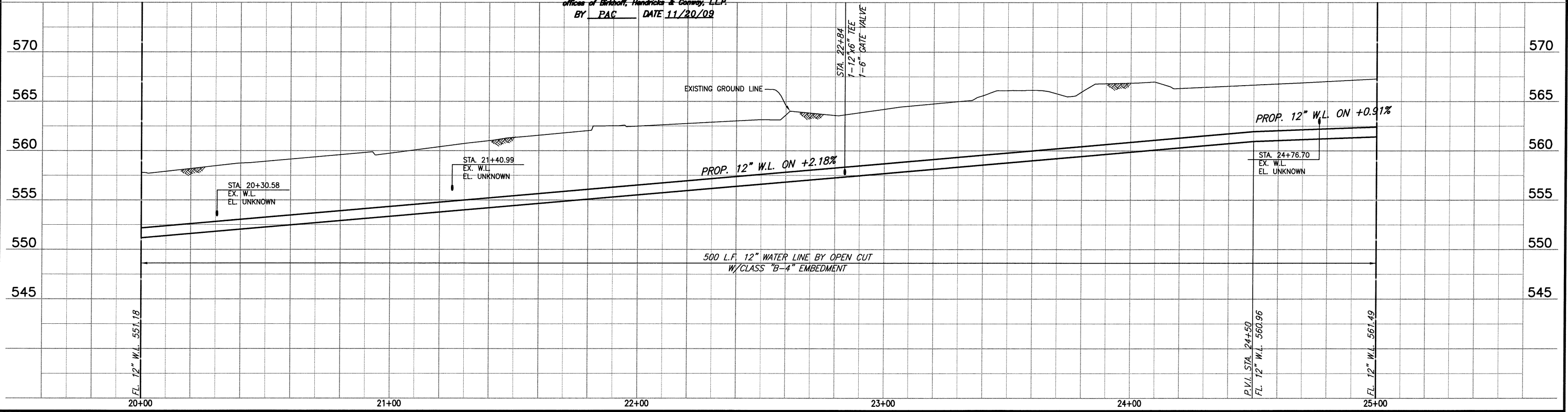


TREE REMOVAL = (NO PAY ITEM)

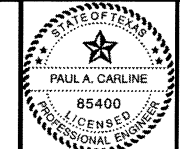


**CAUTION!!**  
RCH WSC WATER LINES IN AREA.  
CONTRACTOR TO CONFIRM LOCATIONS  
PRIOR TO CONSTRUCTION.  
CONTACT MR. DWIGHT LINDOP WITH  
RCH WSC AT 972-670-9091 PRIOR  
TO CONSTRUCTION.

This record drawing is a compilation of the sealed engineering drawing for this project, modified by addenda, change orders and information furnished by the contractor. The information shown on the record drawings that was provided by the contractor or others not associated with the design engineer cannot be verified for accuracy or completeness. This original sealed drawings are on file at the offices of Birkhoff, Hendricks & Conway, L.L.P.  
BY PAC DATE 11/20/09



**BIRKHOFF, HENDRICKS & CONWAY, L.L.P.**  
CONSULTING ENGINEERS  
7502 Greenville Ave., Suite 220  
Dallas, Texas  
(214) 361-7900



THESE DOCUMENTS ARE FOR  
BIDDING, CONSTRUCTION,  
AND PERMIT PURPOSES.  
  
DATE: 12/10/07

**CITY OF ROCKWALL, TEXAS**  
F.M. 549 WATER LINE  
12" WATER LINE (LINE E)  
PLAN-PROFILE  
STA. 20+00 TO STA. 25+00

BHC  
PROJECT NO.  
2006-150  
December, 2007  
SHEET NO.  
**5**