

15' SANITARY SEWER EASEMENT
 N 7004430.2385 E 2601267.1675
 MATCH LINE STA. 5+00

JEFF BOYD DRIVE
 W.L. STA. 5+70
 FURNISH & INSTALL:
 1-12"x12" TEE
 1-12" GATE VALVE
 1-12" PLUG (NORTH)

W.L. CURVE No. 1
 $\Delta=02^{\circ}01'22''$
 $R=5674.58$
 $T=100.18'$
 $L=200.34'$
 $C.B.=N 44^{\circ}11'00'' E$
 $C.D.=200.33'$

W.L. CURVE No. 2
 $\Delta=00^{\circ}27'38''$
 $R=5688.58$
 $T=22.86'$
 $L=45.72'$
 $C.B.=N 42^{\circ}56'31'' E$
 $C.D.=45.72'$

W.L. P.T. STA. 6+33.61
 N 7004507.6870
 E 2601359.4295

W.L. P.C. P.I. STA. 5+87.89
 $\Delta = 90^{\circ}00'00'' LT$
 N 7004474.2173
 E 2601328.2820
 FURNISH & INSTALL
 12"x12" TEE
 3-12" GATE VALVES
 1-12" PLUG

W.L. P.T. STA. 5+73.89
 $\Delta = 90^{\circ}00'00'' RT$
 N 7004483.7960
 E 2601318.0718

W.L. STA. 9+51.00
 N 7004740.8975
 E 2601574.7171
 FURNISH & INSTALL
 1-12" x 6" TEE
 1-6" GATE VALVE
 1-FIRE HYDRANT
 8 L.F. 6" P.V.C. WATERLINE

CONTROL POINT NO. 895
 IRON ROD
 N 7004723.7104
 E 2601641.3368
 ELEV. 541.94

CONTROL POINT NO. 876
 60d NAIL
 N 7004480.0210
 E 2601461.1173
 ELEV. 5542.76

FUTURE 12" WATERLINE
 (BY OTHERS)


W.L. STA. 5+70
 FURNISH & INSTALL:
 1-12"x12" TEE
 1-12" GATE VALVE
 1-12" PLUG (NORTH)

W.L. CURVE No. 1
 $\Delta=02^{\circ}01'22''$
 $R=5674.58$
 $T=100.18'$
 $L=200.34'$
 $C.B.=N 44^{\circ}11'00'' E$
 $C.D.=200.33'$

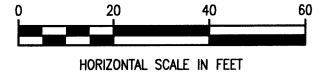
W.L. CURVE No. 2
 $\Delta=00^{\circ}27'38''$
 $R=5688.58$
 $T=22.86'$
 $L=45.72'$
 $C.B.=N 42^{\circ}56'31'' E$
 $C.D.=45.72'$

W.L. P.T. STA. 6+33.61
 N 7004507.6870
 E 2601359.4295

FURNISH & INSTALL
 12" WATER LINE

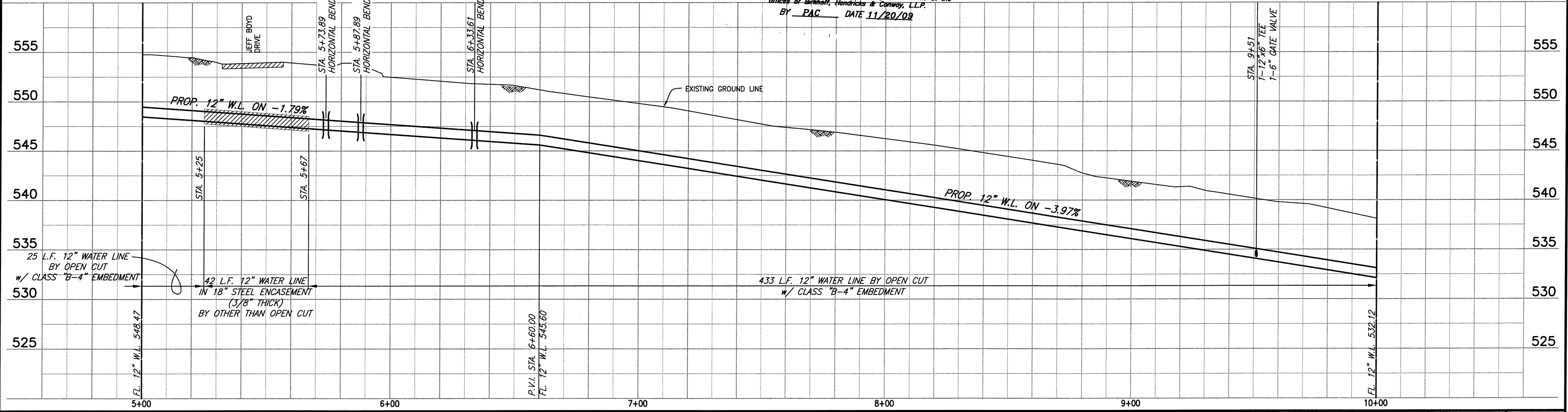
TREE REMOVAL = 
 (NO PAY ITEM)

MATCH LINE STA. 10+00
 N 7004776.9016 E 2601607.9542

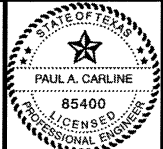


This record drawing is a compilation of the sealed engineering drawing for this project, modified by addenda, change orders and information furnished by the contractor. The information shown on the record drawings that was provided by the contractor or others not associated with the design engineer cannot be verified for accuracy or completeness. This original sealed drawings are on file at the offices of Birkhoff, Hendricks & Conway, L.L.P.
 BY PAC DATE 11/20/09

CAUTION!!
 RCH WSC WATER LINES IN AREA.
 CONTRACTOR TO CONFIRM LOCATIONS
 PRIOR TO CONSTRUCTION.
 CONTACT MR. DWIGHT LINDOP WITH
 RCH WSC AT 972-670-9091 PRIOR
 TO CONSTRUCTION.



BIRKHOFF, HENDRICKS & CONWAY, L.L.P.
 CONSULTING ENGINEERS
 7502 Greenville Ave., Suite 220
 Dallas, Texas
 (214) 361-7900



THESE DOCUMENTS ARE FOR
 BIDDING, CONSTRUCTION,
 AND PERMIT PURPOSES.
 DATE: 12/10/07

CITY OF ROCKWALL, TEXAS
 F.M. 549 WATER LINE
 12" WATER LINE (LINE E)
 PLAN-PROFILE
 STA. 5+00 TO STA. 10+00

BHC
 PROJECT NO.
 2006-150
 December, 2007

SHEET NO.
2

These plans and related specifications were prepared for construction of this specific project only. Reuse of these documents is not permitted without written authorization of Birkhoff, Hendricks, & Conway, L.L.P.