

This record drawing is a compilation of the sealed engineering drawing for this project, modified by addenda, change orders and information furnished by the contractor. The information shown on the record drawings that was provided by the contractor or others not associated with the design engineer cannot be verified for accuracy or completeness. This original sealed drawings are on file at the offices of Birkhoff, Hendricks & Conway, L.L.P.
 BY PAC DATE 11/20/09

BIRKHOFF, HENDRICKS & CONWAY, L.L.P. CONSULTING ENGINEERS 7502 Greenville Ave., Suite 220 Dallas, Texas (214) 361-7900		THESE DOCUMENTS ARE FOR BIDDING, CONSTRUCTION, AND PERMIT PURPOSES. DATE: 12/19/07	CITY OF ROCKWALL, TEXAS F.M. 549 WATER LINE 12" WATER LINE (LINE E) PLAN-PROFILE STA. 2+15 TO STA. 5+00	BHC PROJECT NO. 2006-150	SHEET NO. 1
				December, 2007	

15' SANITARY SEWER EASEMENT

N 7004430.2385 E 2601267.1675
MATCH LINE STA. 5+00

W.L. CURVE No. 1
 $\Delta=02^{\circ}01'22''$
 $R=5674.58$
 $T=100.18'$
 $L=200.34'$
 $C.B.=N 44^{\circ}11'00'' E$
 $C.D.=200.33'$

W.L. CURVE No. 2
 $\Delta=00^{\circ}27'38''$
 $R=5688.58$
 $T=22.86'$
 $L=45.72'$
 $C.B.=N 42^{\circ}56'31'' E$
 $C.D.=45.72'$

W.L. P.T. STA. 6+33.61
N 7004507.6870
E 2601359.4295

FURNISH & INSTALL
12" WATER LINE

W.L. STA. 5+70
FURNISH & INSTALL:
1-12"x12" TEE
1-12" GATE VALVE
1-12" PLUG (NORTH)

W.L. P.T. P.I. STA. 5+73.89
 $\Delta = 90^{\circ}00'00'' RT$
N 7004483.7960
E 2601318.0718

W.L. P.C. P.I. STA. 5+87.89
 $\Delta = 90^{\circ}00'00'' LT$
N 7004474.2173
E 2601328.2820
FURNISH & INSTALL
12"x12" TEE
3-12" GATE VALVES
1-12" PLUG

CONTROL POINT NO. 876
60d NAIL
N 7004480.0210
E 2601461.1173
ELEV. 5542.76

W.L. STA. 9+51.00
N 7004740.8975
E 2601574.7171
FURNISH & INSTALL
1-12" 6" TEE
1-6" GATE VALVE
1-FIRE HYDRANT
8 L.F. 6" P.V.C. WATERLINE

CONTROL POINT NO. 895
IRON ROD
N 7004723.7104
E 2601641.3368
ELEV. 541.94

TREE REMOVAL =
(NO PAY ITEM)

N 7004776.9016 E 2601607.9542
MATCH LINE STA. 10+00

12" CDR

15' RCH WSC WATERLINE EASEMENT

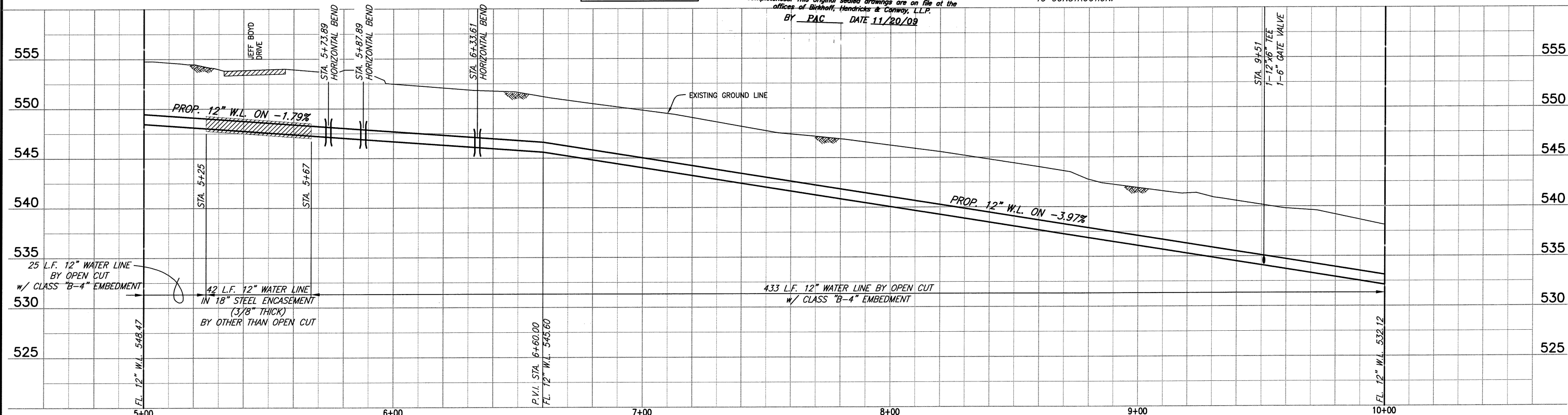
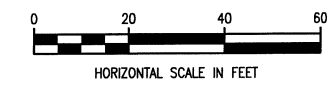
JEFF BOYD DRIVE

FUTURE 12" WATERLINE
(BY OTHERS)

CONTROL POINT NO. 876
60d NAIL
N 7004480.0210
E 2601461.1173
ELEV. 5542.76

This record drawing is a compilation of the sealed engineering drawing for this project, modified by addenda, change orders and information furnished by the contractor. The information shown on the record drawings that was provided by the contractor or others not associated with the design engineer cannot be verified for accuracy or completeness. This original sealed drawings are on file at the offices of Birkhoff, Hendricks & Conway, L.L.P.
BY PAC DATE 11/20/09

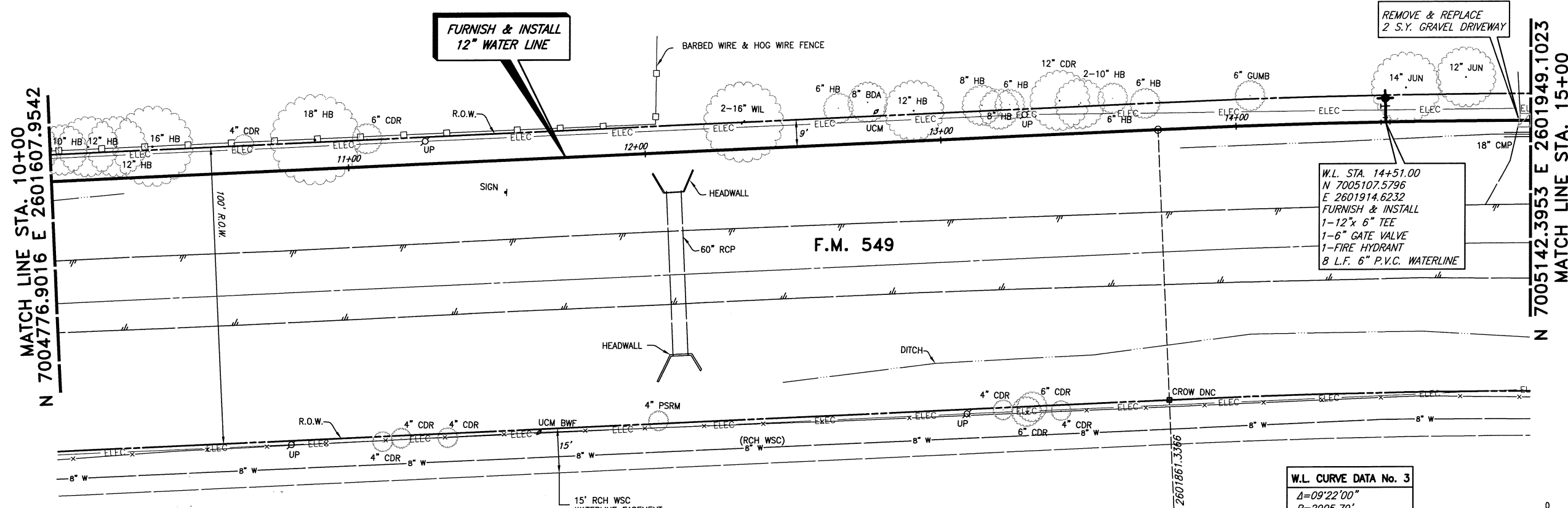
CAUTION!!
RCH WSC WATER LINES IN AREA.
CONTRACTOR TO CONFIRM LOCATIONS
PRIOR TO CONSTRUCTION.
CONTACT MR. DWIGHT LINDOP WITH
RCH WSC AT 972-670-9091 PRIOR
TO CONSTRUCTION.



BIRKHOFF, HENDRICKS & CONWAY, L.L.P. CONSULTING ENGINEERS 7502 Greenville Ave., Suite 220 Dallas, Texas (214) 361-7900		THESE DOCUMENTS ARE FOR BIDDING, CONSTRUCTION, AND PERMIT PURPOSES. DATE: 12/10/07	CITY OF ROCKWALL, TEXAS F.M. 549 WATER LINE 12" WATER LINE (LINE E) PLAN-PROFILE STA. 5+00 TO STA. 10+00	BHC PROJECT NO. 2006-150	SHEET NO. 2
				December, 2007	

These plans and related specifications were prepared for construction of this specific project only. Reuse of these documents is not permitted without written authorization of Birkhoff, Hendricks, & Conway, L.L.P.

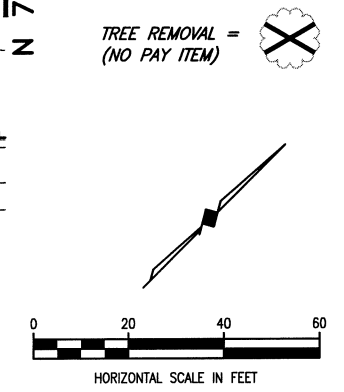
These plans and related specifications were prepared for construction of this specific project only. Reuse of these documents is not permitted without written authorization of Birkhoff, Hendricks, & Conway, L.L.P.



REMOVE & REPLACE
2 S.Y. GRAVEL DRIVEWAY

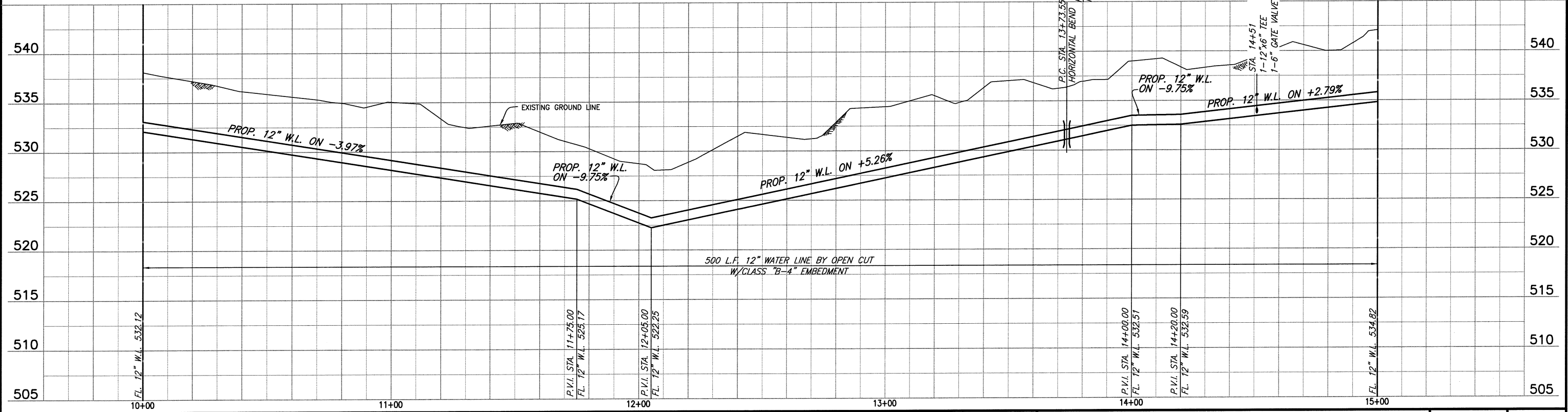
W.L. STA. 14+51.00
N 7005107.5796
E 2601914.6232
FURNISH & INSTALL
1-12" x 6" TEE
1-6" GATE VALVE
1-FIRE HYDRANT
8 L.F. 6" P.V.C. WATERLINE

W.L. CURVE DATA No. 3
 $\Delta = 09^{\circ}22'00"$
 $R = 2905.79'$
 $T = 238.05'$
 $L = 475.04'$
 $C.B. = N 47^{\circ}23'42" E$
 $C.D. = 474.51'$



This record drawing is a compilation of the sealed engineering drawing for this project, modified by addenda, change orders and information furnished by the contractor. The information shown on the record drawings that was provided by the contractor or others not associated with the design engineer cannot be verified for accuracy or completeness. This original sealed drawings are on file at the offices of Birkhoff, Hendricks & Conway, L.L.P.
 BY PAC DATE 11/20/09

CAUTION!!
 RCH WSC WATER LINES IN AREA.
 CONTRACTOR TO CONFIRM LOCATIONS
 PRIOR TO CONSTRUCTION.
 CONTACT MR. DWIGHT LINDOP WITH
 RCH WSC AT 972-670-9091 PRIOR
 TO CONSTRUCTION.



BIRKHOFF, HENDRICKS & CONWAY, L.L.P.
 CONSULTING ENGINEERS
 7502 Greenville Ave., Suite 220
 Dallas, Texas
 (214) 361-7900

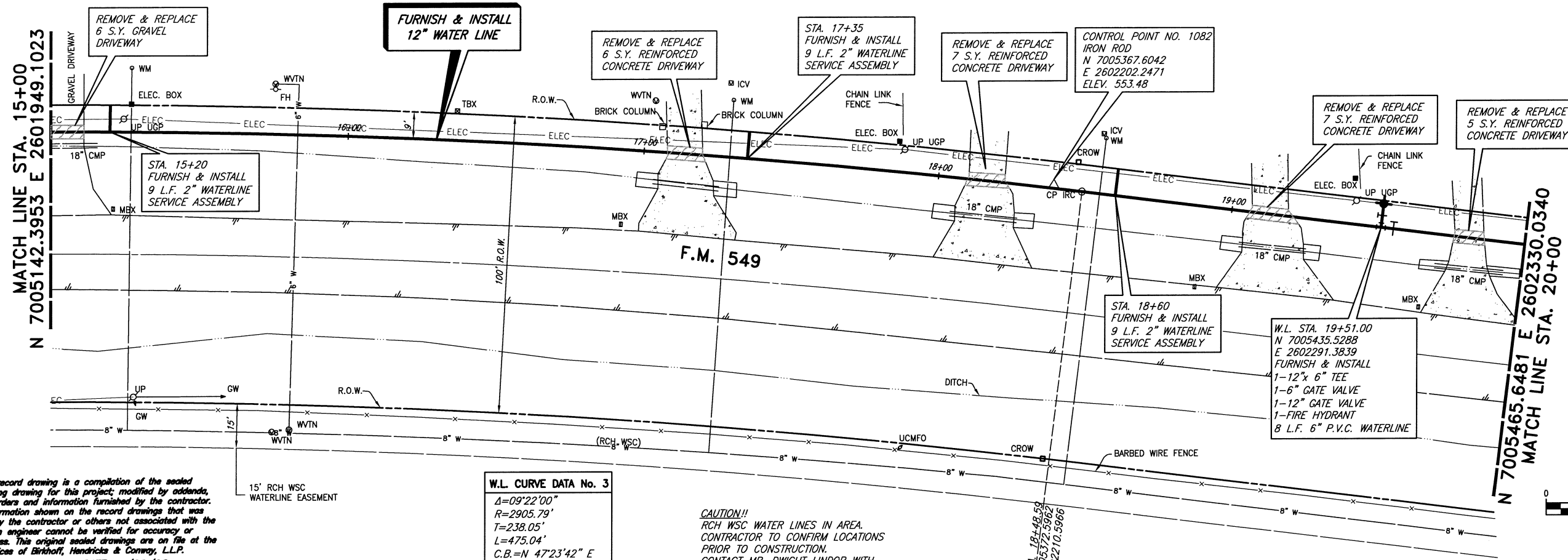


THESE DOCUMENTS ARE FOR
 BIDDING, CONSTRUCTION,
 AND PERMIT PURPOSES.
 DATE: 12/10/07

CITY OF ROCKWALL, TEXAS
 F.M. 549 WATER LINE
 12" WATER LINE (LINE E)
 PLAN-PROFILE
 STA. 10+00 TO STA. 15+00

BHC
 PROJECT NO.
 2006-150
 December, 2007

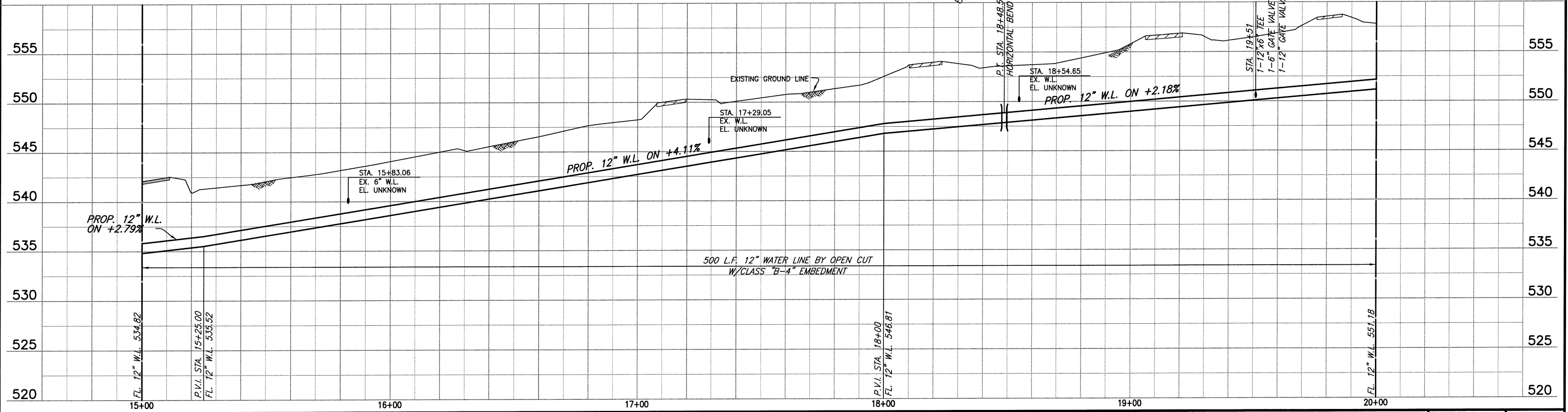
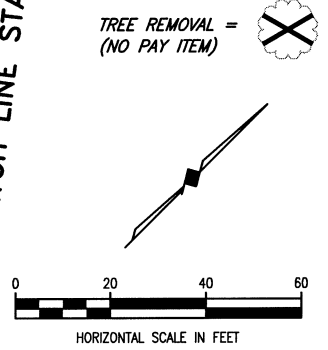
SHEET NO.
3



This record drawing is a compilation of the sealed engineering drawing for this project, modified by addenda, change orders and information furnished by the contractor. The information shown on the record drawings that was provided by the contractor or others not associated with the design engineer cannot be verified for accuracy or completeness. This original sealed drawings are on file at the offices of Birkhoff, Hendricks & Conway, L.L.P.
 BY PAC DATE 11/20/09

W.L. CURVE DATA No. 3
 $\Delta=09^{\circ}22'00''$
 $R=2905.79'$
 $T=238.05'$
 $L=475.04'$
 $C.B.=N 47^{\circ}23'42'' E$
 $C.D.=474.51'$

CAUTION!!
 RCH WSC WATER LINES IN AREA. CONTRACTOR TO CONFIRM LOCATIONS PRIOR TO CONSTRUCTION. CONTACT MR. DWIGHT LINDOP WITH RCH WSC AT 972-670-9091 PRIOR TO CONSTRUCTION.



BIRKHOFF, HENDRICKS & CONWAY, L.L.P.
 CONSULTING ENGINEERS
 7502 Greenville Ave., Suite 220
 Dallas, Texas
 (214) 361-7900



THESE DOCUMENTS ARE FOR BIDDING, CONSTRUCTION, AND PERMIT PURPOSES.
 DATE: 12/10/07

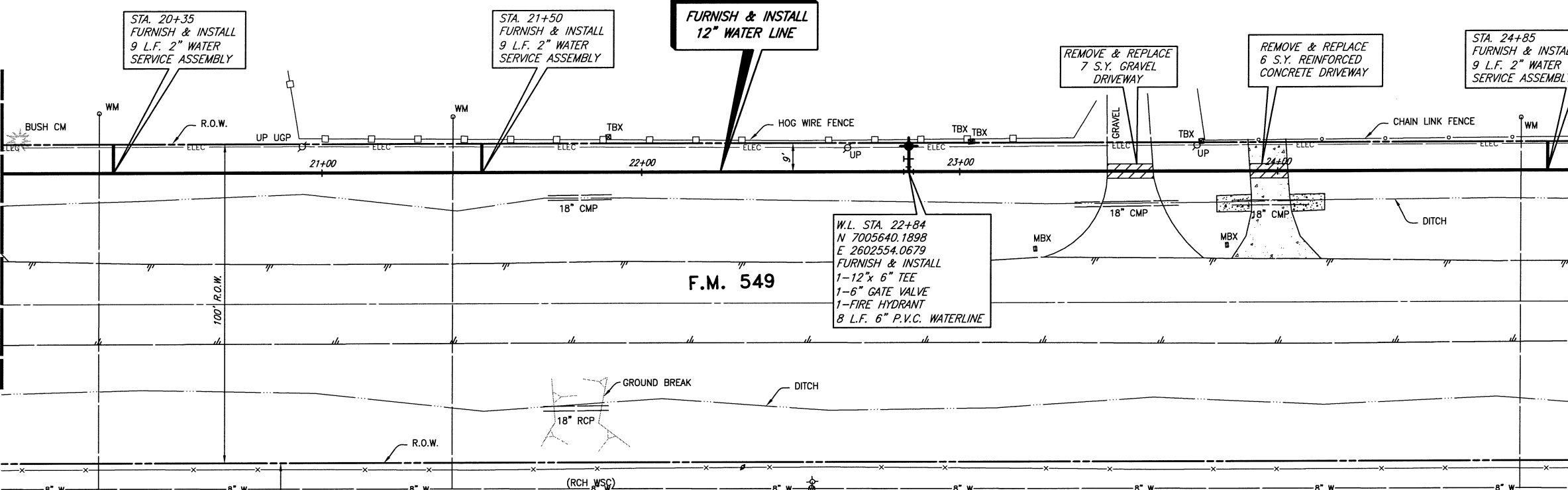
CITY OF ROCKWALL, TEXAS
 F.M. 549 WATER LINE
 12" WATER LINE (LINE E)
 PLAN-PROFILE
 STA. 15+00 TO STA. 20+00

BHC PROJECT NO. 2006-150
 December, 2007
 SHEET NO. **4**

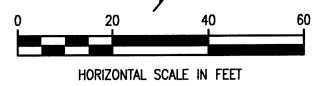
These plans and related specifications were prepared for construction of this specific project only. Reuse of these documents is not permitted without written authorization of Birkhoff, Hendricks & Conway, L.L.P.

MATCH LINE STA. 20+00
N 7005465.6481 E 2602330.0340

MATCH LINE STA. 25+00
N 7005772.9398 E 2602724.4599

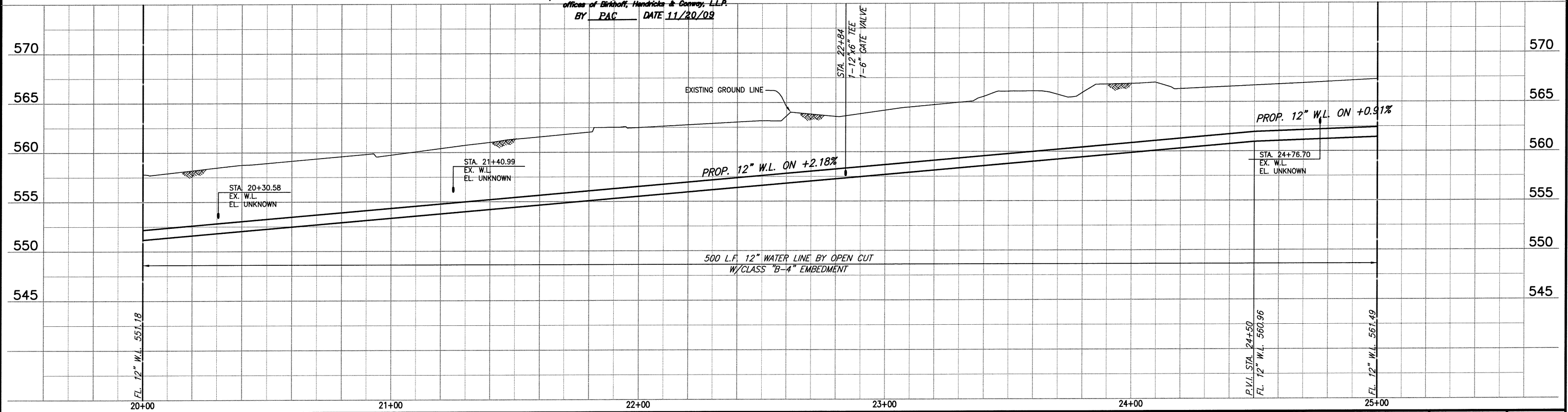


TREE REMOVAL = (NO PAY ITEM)



CAUTION!!
RCH WSC WATER LINES IN AREA.
CONTRACTOR TO CONFIRM LOCATIONS
PRIOR TO CONSTRUCTION.
CONTACT MR. DWIGHT LINDOP WITH
RCH WSC AT 972-670-9091 PRIOR
TO CONSTRUCTION.

This record drawing is a compilation of the sealed
engineering drawing for this project, modified by addenda,
change orders and information furnished by the contractor.
The information shown on the record drawings that was
provided by the contractor or others not associated with the
design engineer cannot be verified for accuracy or
completeness. This original sealed drawings are on file at the
offices of Birkhoff, Hendricks & Conway, L.L.P.
BY PAC DATE 11/20/09



BIRKHOFF, HENDRICKS & CONWAY, L.L.P.
CONSULTING ENGINEERS
7502 Greenville Ave., Suite 220
Dallas, Texas
(214) 361-7900



THESE DOCUMENTS ARE FOR
BIDDING, CONSTRUCTION,
AND PERMIT PURPOSES.
DATE: 12/10/07

CITY OF ROCKWALL, TEXAS
F.M. 549 WATER LINE
12" WATER LINE (LINE E)
PLAN-PROFILE
STA. 20+00 TO STA. 25+00

BHC
PROJECT NO.
2006-150
December, 2007
SHEET NO.
5