

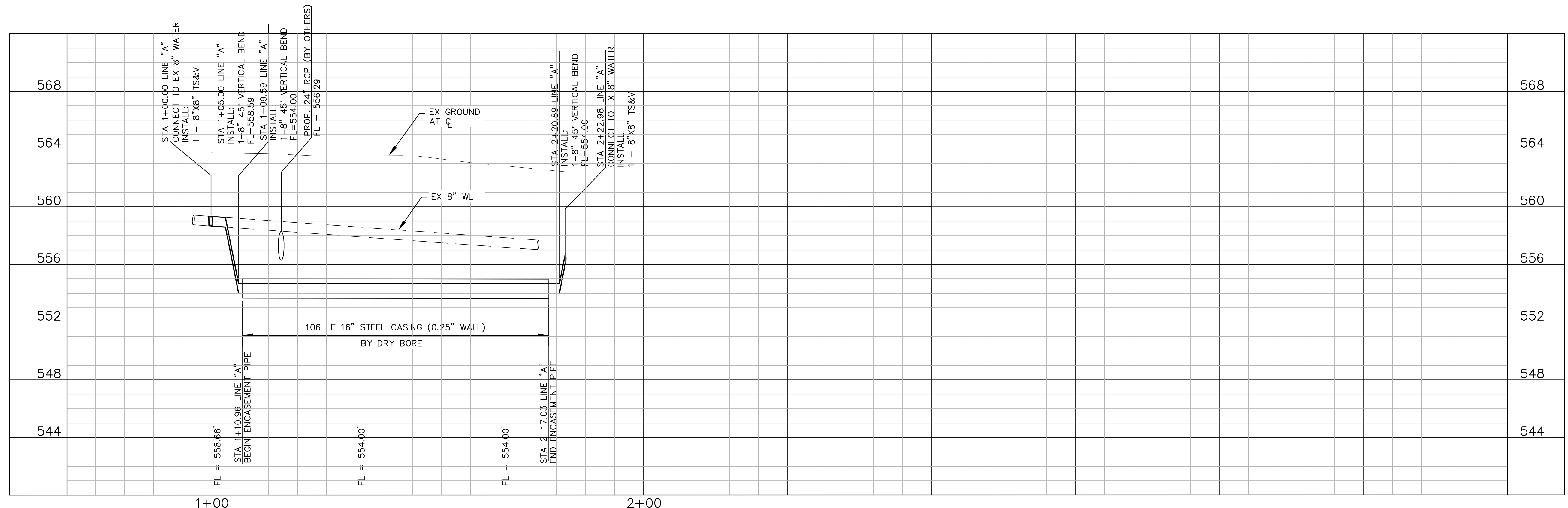
**LEGEND**

- REMOVE & REPLACE CONCRETE DRIVEWAY
- REMOVE & REPLACE CONCRETE SIDEWALK
- EXISTING VALVE
- PROPOSED VALVE

**CAUTION!!!**  
UNDERGROUND FRANCHISE UTILITIES IN THE AREA. CONTRACTOR TO VERIFY EXACT DEPTH AND LOCATION OF EACH PRIOR TO CONSTRUCTION. CONTACT UTILITY OWNERS 48 HOURS PRIOR TO CONSTRUCTION.

**NOTES:**

1. ALL EXISTING SANITARY SEWER AND FRANCHISE UTILITIES SHALL BE PROTECTED AND REMAIN IN SERVICE THROUGHOUT CONSTRUCTION UNLESS OTHERWISE SHOWN ON PLANS. CONTRACTOR SHALL VERIFY LOCATIONS AND DEPTHS.
2. EXISTING WATER LINES SHALL BE KEPT IN SERVICE UNTIL NEW LINES ARE CONSTRUCTED, TESTED, AND OPERATIONAL.
3. PLACE BLOCK SODDING IN ALL DISTURBED AREAS.
4. CONTRACTOR SHALL KEEP DRIVEWAYS OPEN AT ALL TIMES THROUGHOUT CONSTRUCTION.



**VERDUNITY**  
A better future, by design.  
17000 Preston Road, Suite 110, Dallas Tx. 75248  
(214) 729-8733  
www.verdunity.com  
Texas P.E. Firm Registration No. F-13496

ISSUE	DATE	DESCRIPTION
1	10/01/2014	RECORD DRAWINGS

DESIGNED BY: K. GREEN  
DRAWN BY: K. GREEN  
CHECKED BY: K. SHEPHERD  
DATE: 9/30/14  
JOB NUMBER: 004-003

**RECORD DRAWINGS**  
THESE PLANS ARE A RECORD SET OF THE CONSTRUCTED PROJECT, AND REFLECT REVISIONS AND CONSTRUCTION-RELATED CHANGES AS MADE BY THE CONTRACTOR. CHANGES MADE FROM THE ORIGINAL CONSTRUCTION DOCUMENTS DO NOT DEPICT ENGINEERING AND ARE NOT THE RESPONSIBILITY OF VERDUNITY, INC. OR THE ENGINEER ON RECORD ON THE ORIGINAL DOCUMENTS. ORIGINAL PLANS RELEASED FOR CONSTRUCTION WERE SEALED BY KRISTIN D. GREEN, PE NO. 100168

City of Rockwall  
*The New Horizon*  
**FM 3097 WATERLINE RELOCATIONS**

**WATERLINE PLAN & PROFILE**  
LOCATIONS 'A' AND 'B'  
0 20' 40'  
SHEET **04**