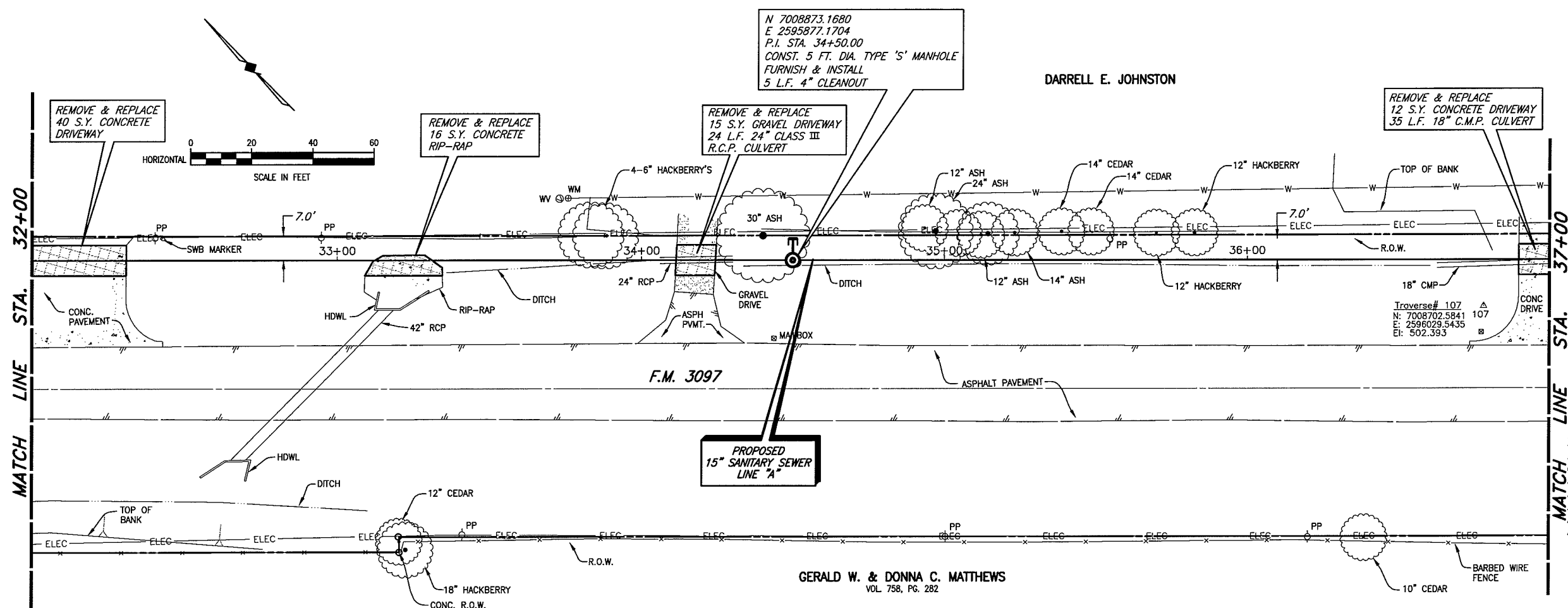


REVISD: 11/6/08 - AQUIVALEZ  
 PLOT STYLE: 11x17D.ctb  
 PLOT SCALE: 1:40  
 H:\Projects\Rockwall\2004147\Line-A\Sheets\2004147\_PP08.dwg



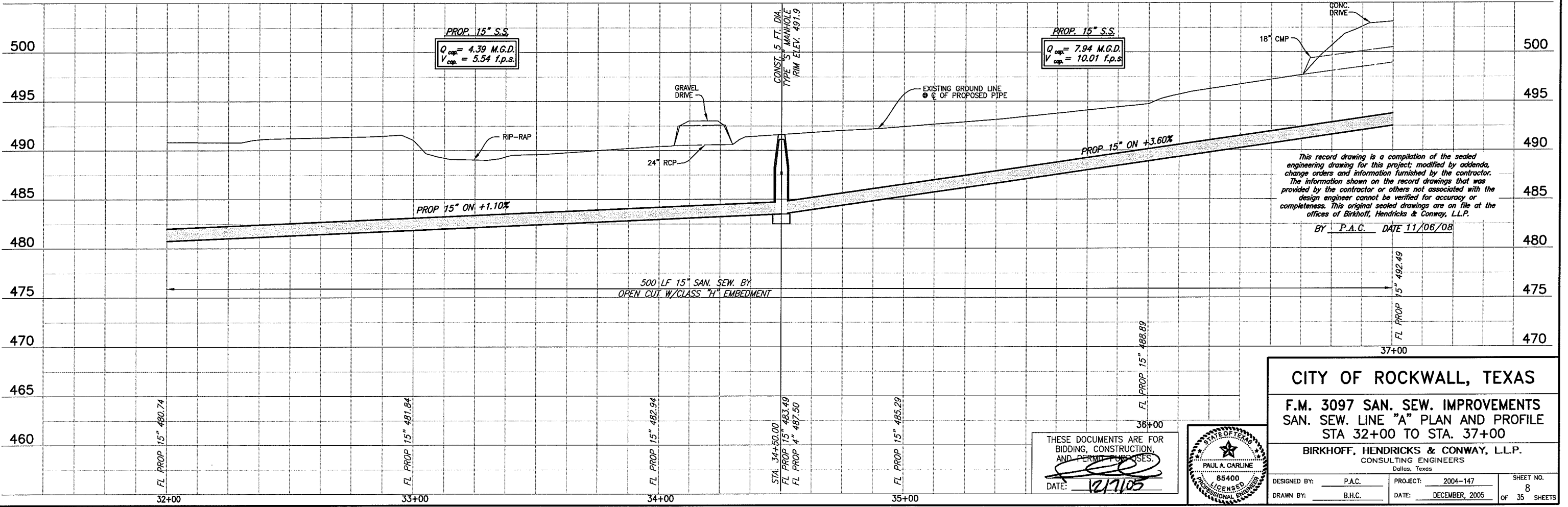
N 7008873.1680  
 E 2595877.1704  
 P.I. STA. 34+50.00  
 CONST. 5 FT. DIA. TYPE 'S' MANHOLE  
 FURNISH & INSTALL  
 5 L.F. 4" CLEANOUT

DARRELL E. JOHNSTON

REMOVE & REPLACE  
 12 S.Y. CONCRETE DRIVEWAY  
 35 L.F. 18" C.M.P. CULVERT

T.B.M. E (490): SQUARE CUT IN THE  
 NORTH WINGWALL OF A 9'x9' BOX  
 CULVERT ON THE NORTH SIDE OF  
 F.M. 3097 AND WEST OF COUNTY  
 ROAD, SANITARY SEWER LINE 'A'  
 STA. 29+04.72, 17.60' LT.  
 N 7009239.6872, E 2595473.64  
 Elev. 490.05

These plans and related specifications  
 were prepared for construction of this  
 specific project only. Reuse of these  
 documents is not permitted without  
 written authorization of Birkhoff,  
 Hendricks & Conway, L.L.P.



PROP. 15" S.S.  
 $Q_{cap} = 4.39$  M.G.D.  
 $V_{cap} = 5.54$  f.p.s.

PROP. 15" S.S.  
 $Q_{cap} = 7.94$  M.G.D.  
 $V_{cap} = 10.01$  f.p.s.

This record drawing is a compilation of the sealed  
 engineering drawing for this project, modified by addenda,  
 change orders and information furnished by the contractor.  
 The information shown on the record drawings that was  
 provided by the contractor or others not associated with the  
 design engineer cannot be verified for accuracy or  
 completeness. This original sealed drawings are on file at the  
 offices of Birkhoff, Hendricks & Conway, L.L.P.  
 BY P.A.G. DATE 11/06/08

**CITY OF ROCKWALL, TEXAS**

**F.M. 3097 SAN. SEW. IMPROVEMENTS**  
**SAN. SEW. LINE "A" PLAN AND PROFILE**  
**STA 32+00 TO STA. 37+00**

**BIRKHOFF, HENDRICKS & CONWAY, L.L.P.**  
 CONSULTING ENGINEERS  
 Dallas, Texas

DESIGNED BY: P.A.C. PROJECT: 2004-147 SHEET NO. 8  
 DRAWN BY: B.H.C. DATE: DECEMBER, 2005 OF 35 SHEETS

THESE DOCUMENTS ARE FOR  
 BIDDING, CONSTRUCTION,  
 AND PERMIT PURPOSES.  
 DATE: 12/7/05

